

Outcomes Summary: Consultation on noise barrier options near Glamis Street, Armitree Street, and Rosebank Avenue, Kingsgrove

January 2017

Overview

In response to public submissions made during the Environmental Impact Statement (EIS) exhibition period for the New M5 project, CDS JV committed to reviewing the design of the noise barriers in the vicinity of Glamis Street, Armitree Street, and Rosebank Avenue, Kingsgrove.

Through consultation with key stakeholders including Canterbury Bankstown Council and the local community, two noise barrier options were developed and tabled to the community as potential alternatives to the EIS design. Either option would still ensure that noise attenuation requirements would be met according to the Environment Protection Agency (EPA) Road Noise Policy.

In November 2016, feedback was sought from the local community regarding their preferences and findings now form the basis of the proposed solution.

The proposed solution will be taken through the detailed design development and will be subject to Sydney Motorway Corporation (SMC), Roads and Maritime Services (RMS) and Department of Environment and Planning (DPE) approvals.

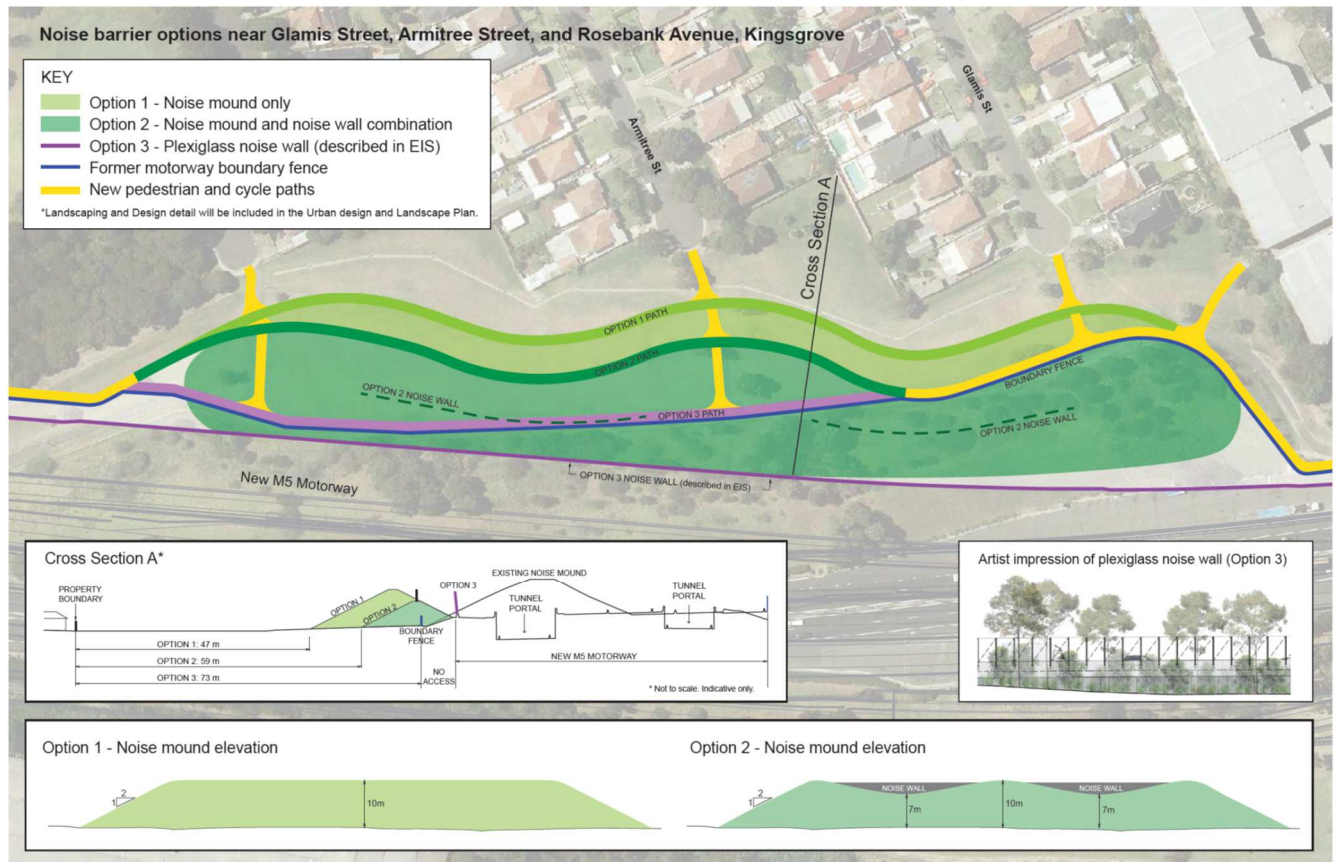
Noise barrier options

The following noise barrier options were proposed:

- **Option 1:** Constructing a noise mound, similar to the existing mound
- **Option 2:** Constructing a noise mound and noise wall combination
- **Option 3:** Constructing a noise wall made from transparent plexiglass (as described in the New M5 EIS)

Initial designs for the three options are shown below.

All options meet the minimum traffic noise reduction requirements. Options 1 and 2 would involve reducing some of the flat open space adjacent to Glamis Street, Armitree Street and Rosebank Avenue.



Consultation activities

The following activities were undertaken as part of the consultation process:

Activity	Stakeholder	Timeframe
Meetings/Briefings	Canterbury Bankstown Council	September 2016
	Kingsgrove North group submissions coordinator	October 2016
	Beverly Hills Progress Association	November 2016
Letterbox notifications (Attachment A)	Construction update to 5,000 local residents and businesses	November 2016
	Notification and survey to over 2,700 local residents and businesses requesting specific feedback on noise mound options and preferences regarding noise wall material	November 2016
Email circulation (Attachment B)	Subscribers to the WestConnex NewM5 email updates	November 2016
Community Information Session/Presentation	Attended by approximately 70 community members (Attachment C)	November 2016
Doorknocking	40 residential properties door knocked by members of the project team to provide specific information to those in the vicinity of Glamis Street, Armitree Street, and Rosebank Avenue, Kingsgrove.	November 2016

Data Assessment Criteria

Feedback received during the consultation process regarding noise mound options and preferences regarding noise walls was weighted according to respondents' proximity to the area in question as follows:

Noise Mound Options		
Scale	Respondent Location	Weighting
High	Directly impacted or in line of sight at Glamis Street, Armitree Street and Rosebank Avenue, Kingsgrove.	75%
Medium	Potential users of the space from the suburb of Kingsgrove and Beverly Hills though not directly impacted.	20%
Low/Negligible	Not from the local area (outside of Kingsgrove and Beverly Hills) or have not provided residential location.	5%

Noise Wall Preference (Transparent Panels or Non-Transparent Panels)	
Respondent Location	Weighting
Local Streets (Glamis Street, Armitree Street and Rosebank Avenue)	90%
External Streets	10%

Feedback Received

A total of 156 survey responses were received, and from these 130 were validated. The 26 surveys that were not validated have been removed from the analysis due to reasons including:

- being a multiple input from one household,
- no options were chosen; or
- response was duplicated.

Of the 130 validated surveys, 71 respondents selected Noise Mound Option 1. 48 respondents selected Noise Mound Option 2 and 11 respondents selected Option 3. This data collected demonstrates that 92% of respondents are in favor of some form of noise mound being reinstated in this location.

Survey feedback received via	Area	Option 1	Option 2	Option 3	Total received		
					High	Medium	Low/negligible
Online	High	16	6	0	22		
	Medium	3	5	1		9	
	Low/negligible	0	0	1			1
Post	High	25	13	2	40		
	Medium	15	17	4		36	
	Low/negligible	2	2	2			6
Info Session	High	4	3	1	8		
	Medium	0	0	0		0	
	Low/negligible	1	1	0			2
Email	High	1	0	0	1		
	Medium	0	0	0		0	
	Low/negligible	0	0	0			0
In person	High	4	1	0	5		
	Medium	0	0	0		0	
	Low/negligible	0	0	0			0
Totals	High	50	23	3	76		
	Medium	18	22	5		45	
	Low/negligible	3	3	3			9
	Overall Totals	71	48	11			

Conclusion

Three noise barrier design alternatives were developed by CDS JV for further consultation in response to feedback received from the community during the EIS process.

The data received as a result of consultation with the community and Council has demonstrated that there is a strong desire for an earth noise mound similar to that which was existing prior to commencement of the New M5 construction, and that Option 1 was the preferable option.

Further to this, feedback received demonstrated a strong desire for non-transparent noise walls to be utilised, if a noise wall was to be built.

The preferred solutions will be developed further through the detailed design process and addressed in the development of the Urban Design and Landscape Plan for the New M5 project. The UDLP process will include noise assessments and further considerations around community impacts and project obligations/constraints.

Next steps

CDS JV will seek the appropriate approvals from SMC, RMS and DPE in order to progress the preferred noise barrier solution for the noise barrier near Glamis Street, Armitree Street, and Rosebank Avenue, Kingsgrove. Detailed design of the preferred solution will also be progressed.

In mid-2017, further consultation will be undertaken for the New M5 draft Urban Design and Landscape Plan (project wide).

This consultation will include information on key design elements for the project such as:

- Noise walls
- Landscaping
- Architectural design of operational buildings and ventilation buildings.

Further information

For future information on the New M5 project or information regarding the noise barrier consultation process for the noise barrier near Glamis Street, Armitree Street, and Rosebank Avenue, Kingsgrove please call toll free **1800 660 248** and ask to speak to a member of the New M5 Community Engagement team.

Have your say: Design options for the noise barrier near Glamis Street, Armitree Street, and Rosebank Avenue, Kingsgrove.

Construction is progressing at the New M5 Kingsgrove sites and work to finalise the design of a noise barrier near Glamis Street, Armitree Street, and Rosebank Avenue is underway.

The New M5 Environmental Impact Statement (EIS), exhibited late 2015 proposed replacing the existing noise mound with a plexiglass noise wall, approximately 10 metres high.

During the exhibition of the New M5 EIS we received submissions from Kingsgrove residents asking us to consider keeping the existing noise mound (or rebuilding a similar one), instead of replacing the noise mound with a noise wall.

In response to community feedback received during the EIS, the following noise barrier options are proposed:

- **Option 1:** Constructing a noise mound, similar to the existing mound
- **Option 2:** Constructing a noise mound and noise wall combination
- **Option 3:** Constructing a noise wall made from transparent plexiglass (as described in the New M5 EIS)

Initial designs for the three options are shown over the page.

All options meet the minimum traffic noise reduction requirements. Options 1 and 2 would involve reducing some of the flat open space adjacent to Glamis Street, Armitree Street and Rosebank Avenue.

We invite you to provide feedback on your preferred noise barrier option. You can do this by completing the attached survey and sending it back to us by:

- Posting the completed survey in the reply paid envelope provided
- emailing a scanned copy of the completed survey to info@newm5.com.au

You can also complete and submit the survey online at <https://www.surveymonkey.com/r/WestConnexNewM5Kingsgrove>.

Please provide your feedback by **5pm on Friday, 2 December 2016**.

Community Information Session

The information session will include a presentation on the proposed noise barrier design options at 10am. Following the presentation, community members can drop in during the session to meet the project team and find out about the work underway, ask questions and provide feedback.

Date: Saturday, 19 November 2016

Presentation on proposed noise barrier design options: 10 am to 11 am

Drop in session: 11 am to 1 pm

Venue: 30 Garema Circuit, Kingsgrove (parking is available on Garema Circuit Council Car Park, 200 metres from venue)

If you would like further information about the noise barrier options or the information session, please call 1800 660 248 and ask to speak to a member of the New M5 community engagement team.

Notification No 168

For more information

✉ info@newm5.com.au
☎ 1800 660 248
🌐 westconnex.com.au
📱 [f](#) [t](#) [in](#)

Constructed by

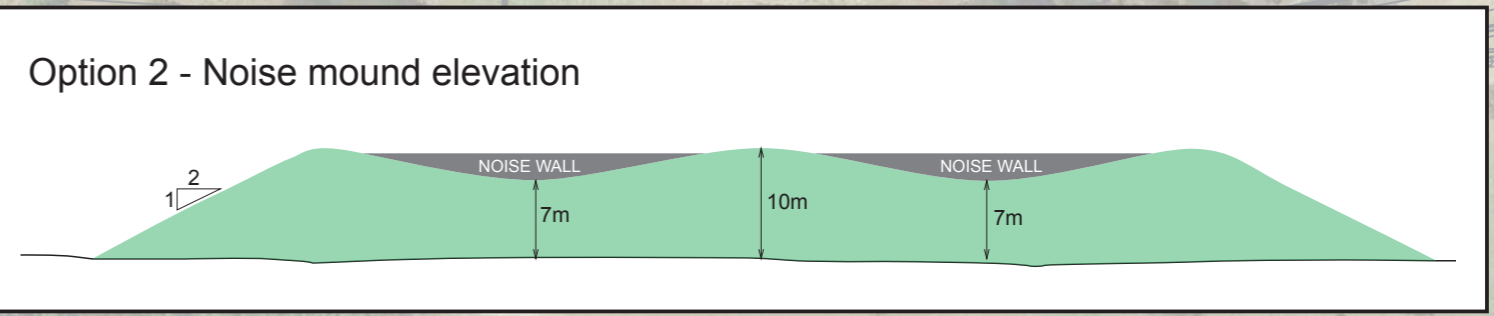
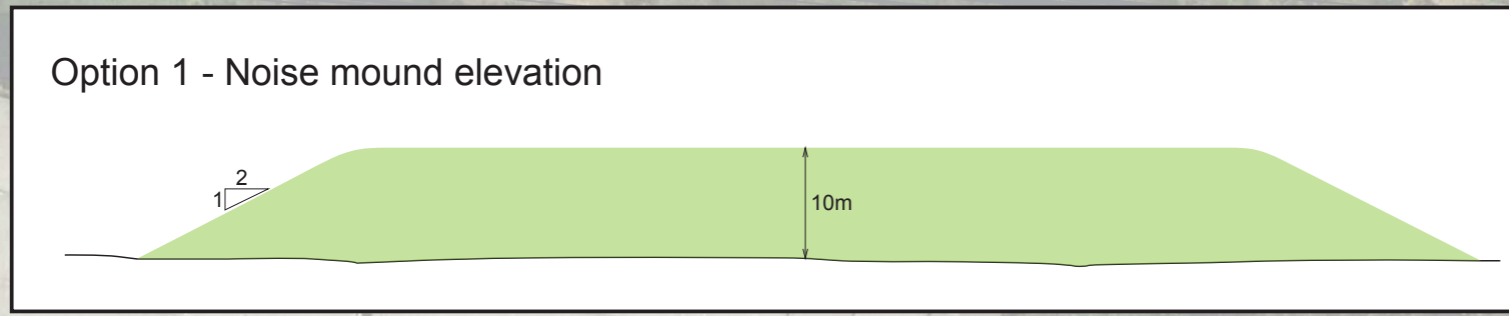
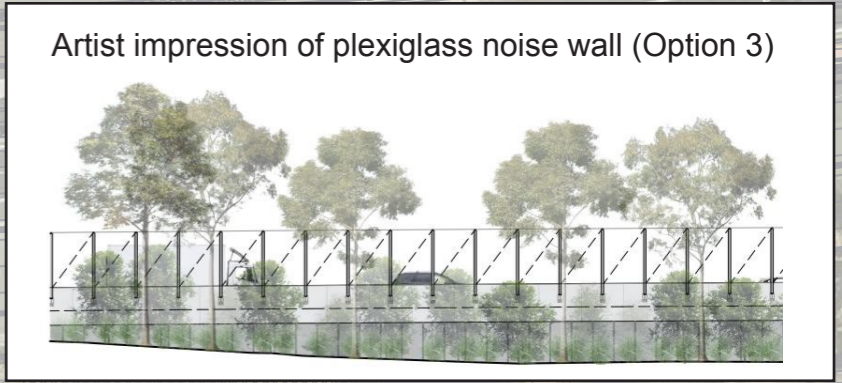
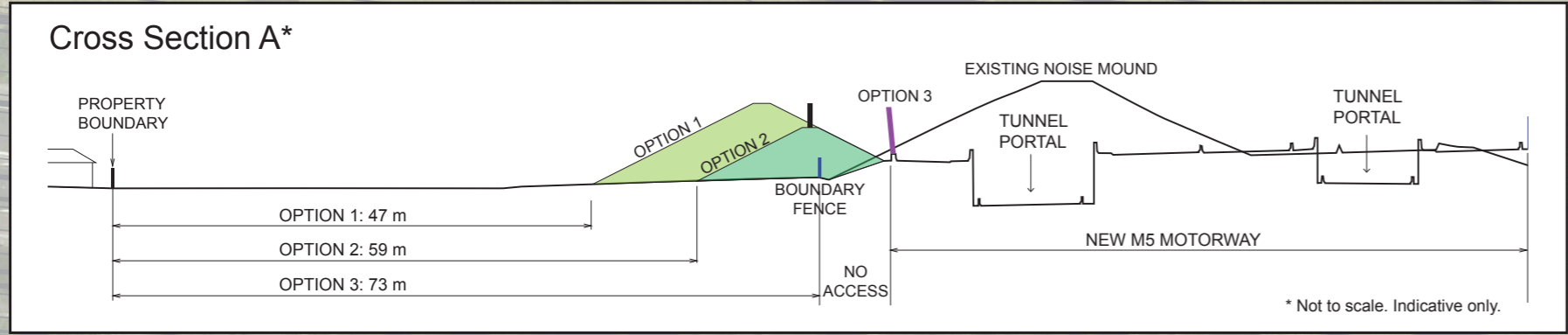
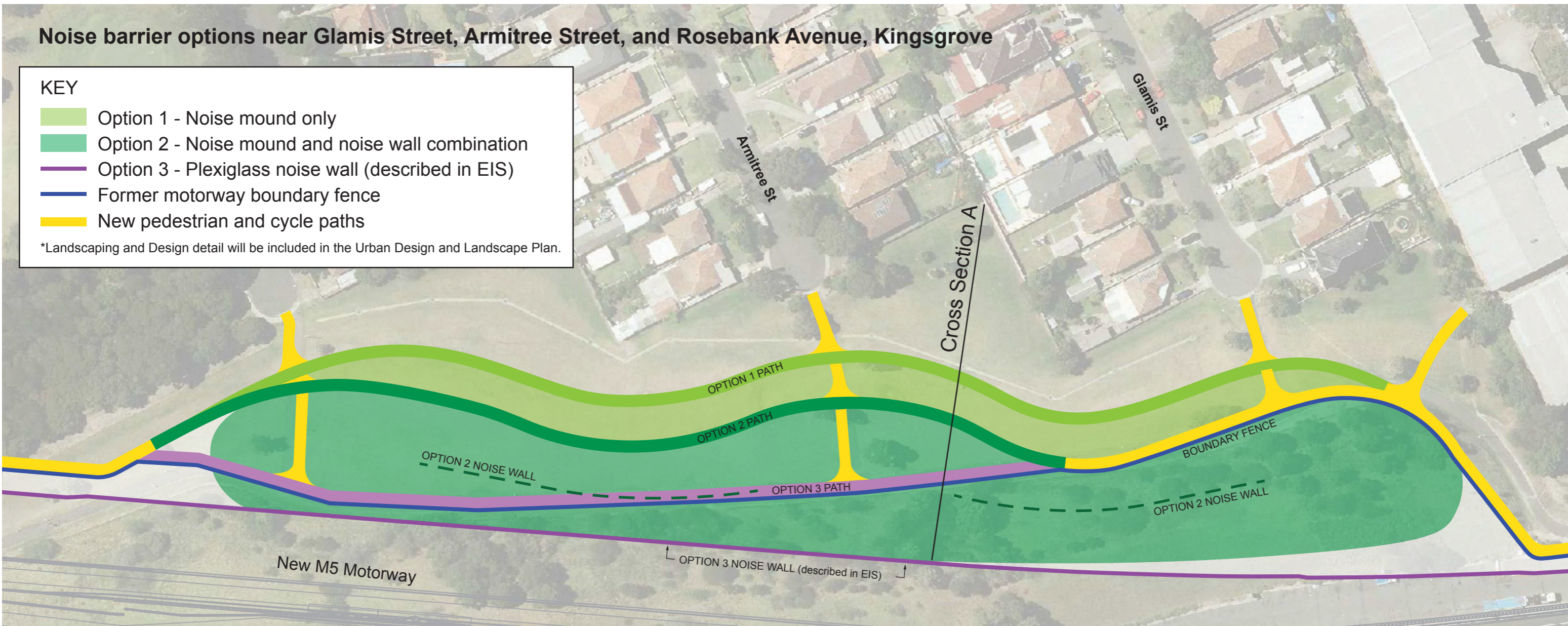


Noise barrier options near Glamis Street, Armitree Street, and Rosebank Avenue, Kingsgrove

KEY

- Option 1 - Noise mound only
- Option 2 - Noise mound and noise wall combination
- Option 3 - Plexiglass noise wall (described in EIS)
- Former motorway boundary fence
- New pedestrian and cycle paths

*Landscaping and Design detail will be included in the Urban Design and Landscape Plan.



Have your say: Design options for noise barrier near Glamis Street, Armitree Street, and Rosebank Avenue, Kingsgrove.

In response to community feedback received during the New M5 Environmental Impact Statement, the following noise barrier options are proposed:

- **Option 1:** Constructing a noise mound, similar to the existing mound
- **Option 2:** Constructing a noise mound and noise wall combination
- **Option 3:** Constructing a noise wall made from transparent plexiglass (as described in the New M5 EIS)

Initial designs for the three options are shown on the notification.

If you would like to provide feedback on these noise barrier options, please complete this survey and return it in the reply paid envelope provided or scan and email the survey to info@newm5.com.au.

You can also complete and submit the survey online at <https://www.surveymonkey.com/r/WestConnexNewM5Kingsgrove>.

Please provide your feedback by **5pm on Friday, 2 December 2016**.

If you would like more information about the noise barrier options before providing your feedback, please call 1800 660 248 and ask to speak to a member of the New M5 team.

DESIGN OPTION

Which noise barrier design do you prefer?

(pick ONE only)

- Option 1: Noise mound, similar to the existing mound.
- Option 2: Noise mound and noise wall combination.
- Option 3: Noise wall only, as described in the EIS.

NOISE WALL

If a noise wall was built, which noise wall treatment would you prefer?

(pick ONE only)

- Transparent material such as plexiglass
- Non-transparent material such as concrete

COMMENTS

Any other comments?

.....

.....

.....

For more information

 info@newm5.com.au
 1800 660 248
 westconnex.com.au
  

Constructed by





Easing
congestion



Creating
jobs



Connecting
communities

CONTACT DETAILS

Providing your street name and suburb helps us map local feedback.

Name (optional):

Street name:

Suburb:

Postcode:

Contact number (optional):

Would you like to receive project information by email?

Yes

No

Email:

Community Information Session

The information session will include a presentation on the proposed noise barrier design options at 10am. Following the presentation, community members can drop in during the session to meet the project team and find out about the work underway, ask questions and provide feedback.

Date: Saturday 19 November, 2016

Presentation on proposed noise barrier design options: 10 am to 11 am

Drop in session: 11 am to 1 pm

Venue: 30 Garema Circuit, Kingsgrove (parking is available on Garema Circuit Council Car Park, 200 metres from venue)

YOUR PRIVACY

Information you provide here is being collected by CPBDS-JV solely for the purpose of conducting this survey and keeping you informed about the New M5 work activities. Information provided is voluntary and you can choose to unsubscribe from project email updates at anytime. You also have the right of access to, and correction of, information provided by you. To view the full privacy policy please, visit www.westconnex.com.au.



We speak your language

ENGLISH

To learn more, simply visit westconnex.com.au/yourlanguage. Need an interpreter? Call the Translating and Interpreting Service on 131 450.

ARABIC

لمعرفة المزيد، ما عليك سوى زيارة westconnex.com.au/yourlanguage. بحاجة إلى مترجم؟ اتصل بخدمة الترجمة الكتابية والترجمة الشفوية على الرقم 131450.

CHINESE

如需了解更多详情，请访问westconnex.com.au/yourlanguage。如需翻译，请拨打翻译与口译热线131 450

GREEK

Για να μάθετε περισσότερα, απλά επισκεφθείτε το westconnex.com.au/yourlanguage. Χρειάζεστε διερμηνέα; Καλέστε την Υπηρεσία Μεταφραστών και Διερμηνέων στο 131 450.

HINDI

अधिक जानने के लिए केवल westconnex.com.au/yourlanguage पर देखें। क्या आपको दुभाषिए की ज़रूरत है? अनुवाद व दुभाषिया सेवा को 131 450 पर फ़ोन करें।

ITALIAN

Per saperne di più, vai semplicemente al sito westconnex.com.au/yourlanguage. Hai bisogno di un interprete? Chiama il servizio d'interpretazione e traduzione al numero 131 450.

KOREAN

더 자세히 알고 싶으시면, 바로 westconnex.com.au/yourlanguage 를 방문하시면 됩니다. 통역사가 필요하십니까? 번역 및 통역 서비스에 131 450으로 연락하십시오.

VIETNAMESE

Để biết thêm, chỉ cần tới trang mạng westconnex.com.au/yourlanguage. Cần thông dịch viên? Hãy điện thoại cho Dịch vụ Thông Phiên Dịch ở số 131 450.

10 November 2016

New M5 community information session



WestConnex will run a community information session to provide information about the **New M5 construction work at the Kingsgrove and Bexley sites**.

At this session you will be able to meet the project team, find out more about upcoming construction activities, ask questions and provide feedback.

This is an opportunity for you to receive information about a range of topics including:

- Construction activities
- Tunnelling
- Out-of-hours works
- Environmental management
- Noise mitigation measures.

Date: Saturday, 19 November 2016

Drop in session: 10am to 1pm

Venue: 30 Garema Circuit Kingsgrove.

Parking available on Garema Circuit Council car park, 200 metres from the venue.

If you would like further information about the upcoming community information session, please toll free 1800 660 248 and ask to speak to a member of the New M5 team or email

info@newm5.com.au.

Unsubscribe to updates

Follow us

@westconnex

@westconnex

Contact us

info@westconnex.com.au

1800 660 248

westconnex.com.au

New M5 Community Information Session

19 November 2016

WestConnex New M5



What is Happening Today?

- Opportunity to meet the team
- Receive an update on construction at Kingsgrove
- Learn more about the project
- Opportunity to have your say on the noise barrier options at Kingsgrove



About WestConnex and the New M5



Kingsgrove Construction Update



Kingsgrove Construction Update (cont.)



Stormwater installation at Kingsgrove construction site south of the M5 Motorway, Oct 16



Excavation in the Kingsgrove north construction site, Oct 16

Kingsgrove Construction Update (cont.)



Bored piling off the M5 East Motorway, Oct 16



Site preparation near Kindilan underpass, Oct 16

Bexley Construction Update

Bexley North construction site:

- Excavating the shaft
- Installing the acoustic shed, completed early 2017

Bexley South construction site:

- Pilling pad for a permanent shaft ongoing
- Concrete works for the shed commenced



Noise barrier design options near Glamis Street, Armitree Street, and Rosebank Avenue, Kingsgrove

- Community feedback and EIS submission
- Noise barrier options have been developed for your review including:
 - Noise wall as described in the New M5 EIS (Option 3)
 - Noise mound, similar to the existing mound (Option 1)
 - Noise mound and noise wall combination (Option 2)
- Opportunity to have your say

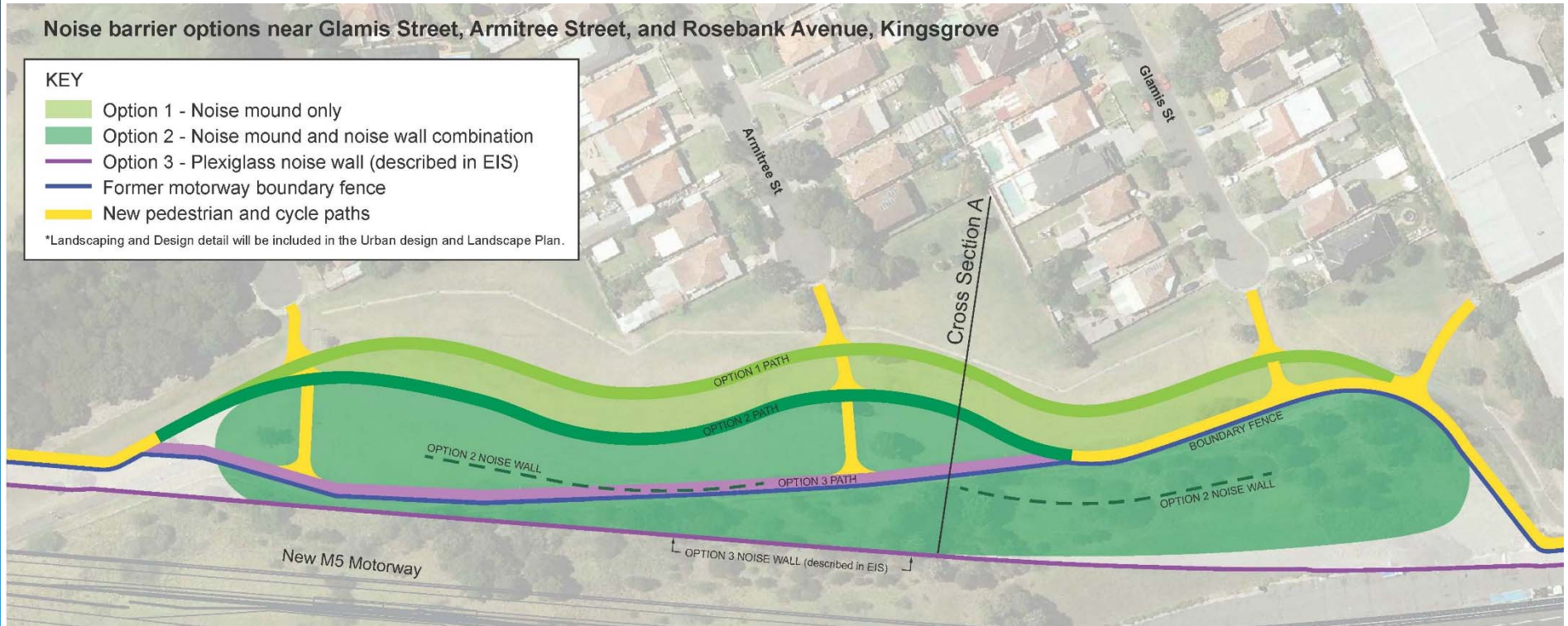
Noise barrier designs combined (options 1, 2, & 3)

Noise barrier options near Glamis Street, Armitree Street, and Rosebank Avenue, Kingsgrove

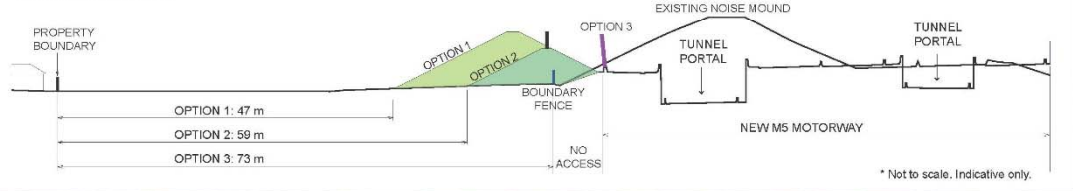
KEY

- Option 1 - Noise mound only
- Option 2 - Noise mound and noise wall combination
- Option 3 - Plexiglass noise wall (described in EIS)
- Former motorway boundary fence
- New pedestrian and cycle paths

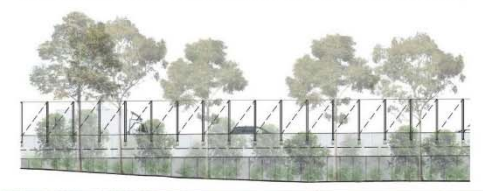
*Landscaping and Design detail will be included in the Urban design and Landscape Plan.



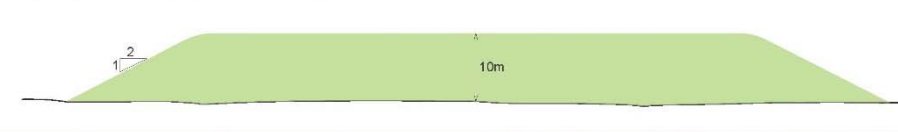
Cross Section A*



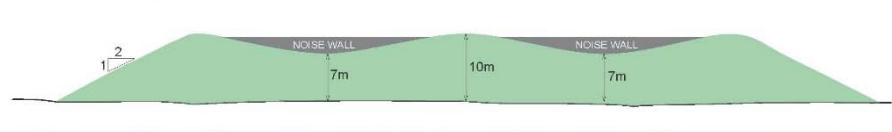
Artist impression of plexiglass noise wall (Option 3)



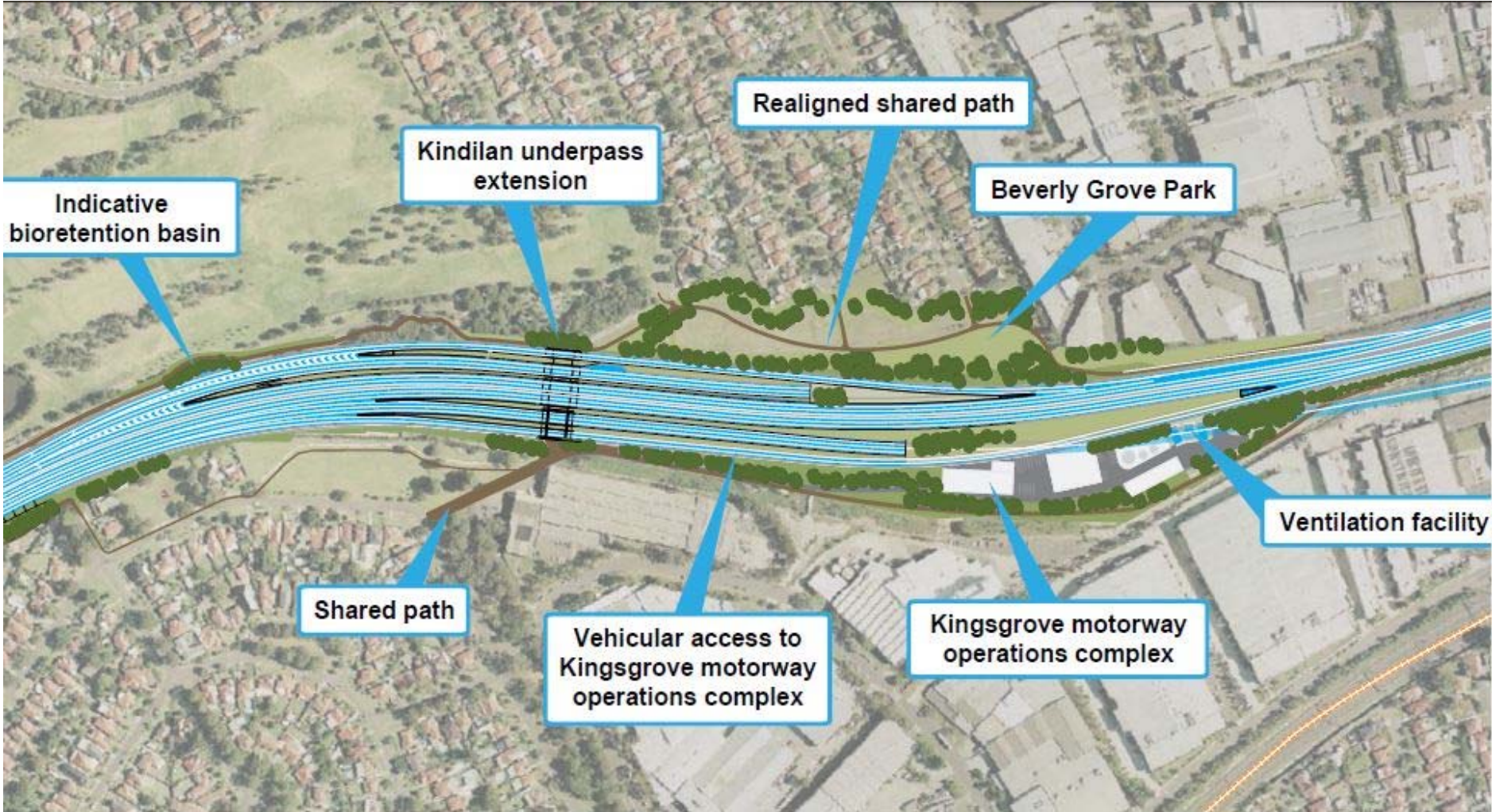
Option 1 - Noise mound elevation



Option 2 - Noise mound elevation



Noise wall as described in the New M5 EIS (option 3)



Artist Impression from the New M5 EIS (option 3)



Artist Impression from the New M5 EIS (option 3)

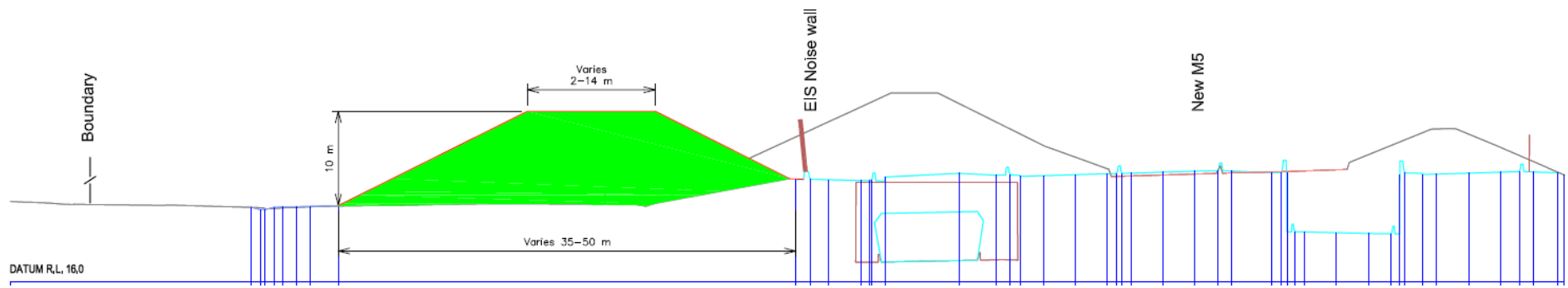
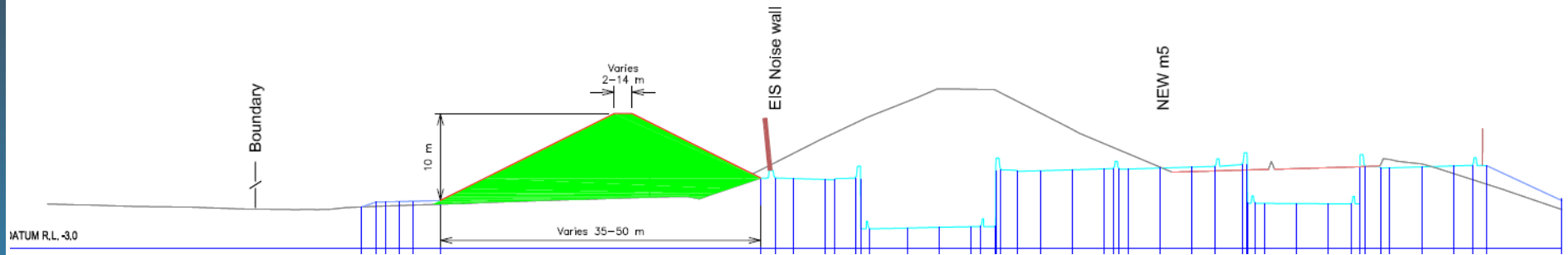


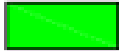
A noise mound, similar to the existing mound (option 1)

Aerial view – distance from property boundaries



Cross section - option 1



 Option 1: 10 m Constant height mound

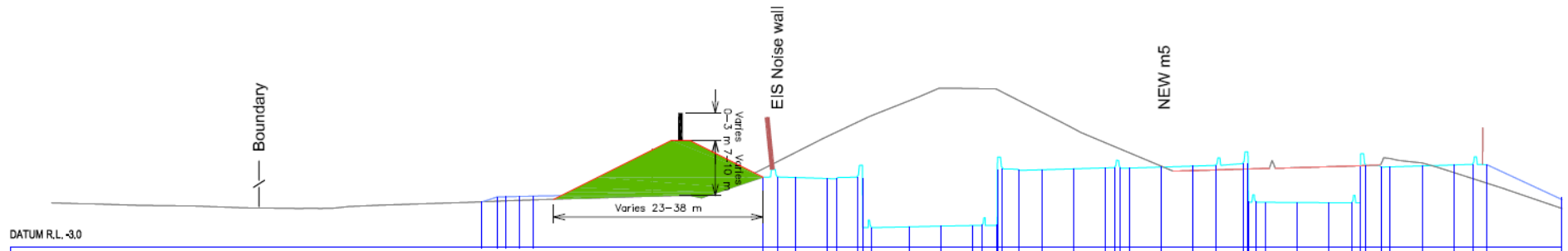
A noise mound and noise wall combination (option 2)

Aerial view – distance from property boundaries

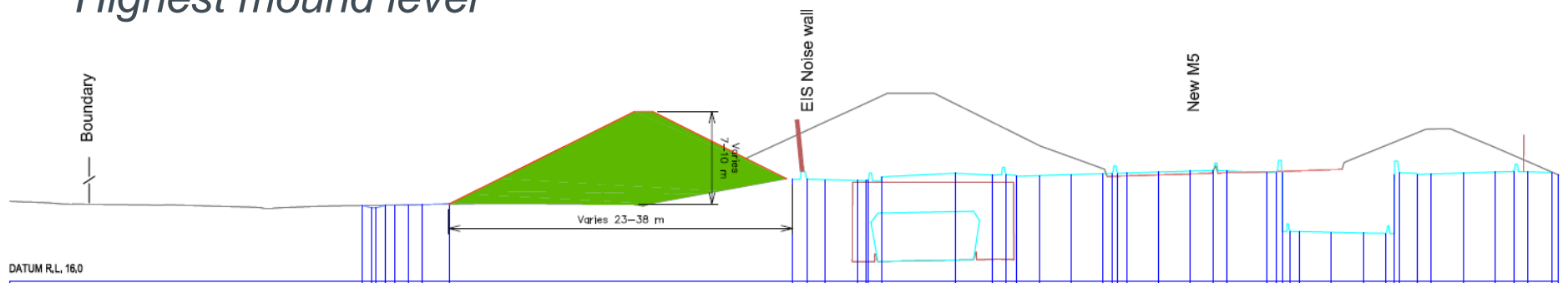



Cross section - option 2

Lowest mound level + Noise wall



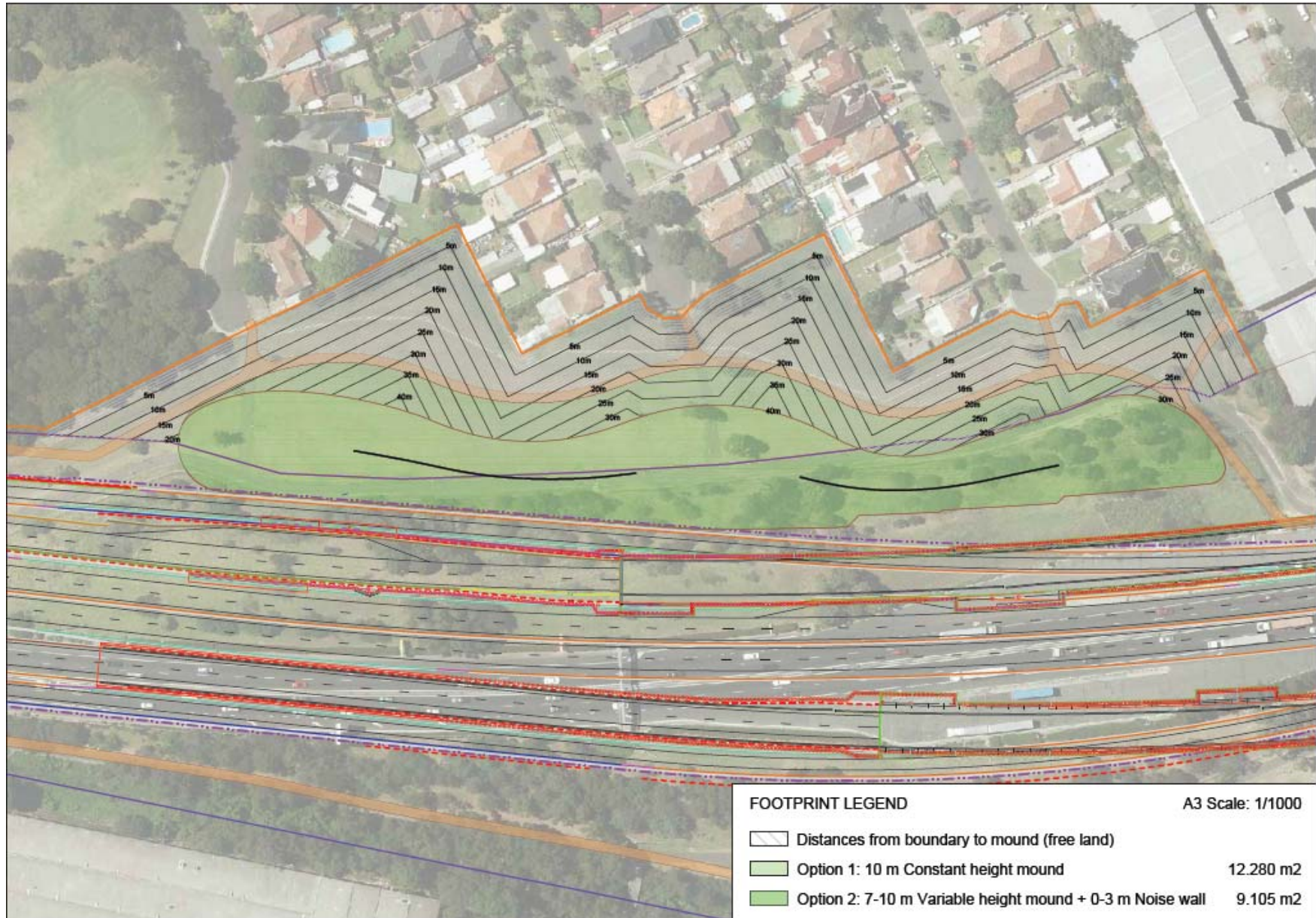
Highest mound level



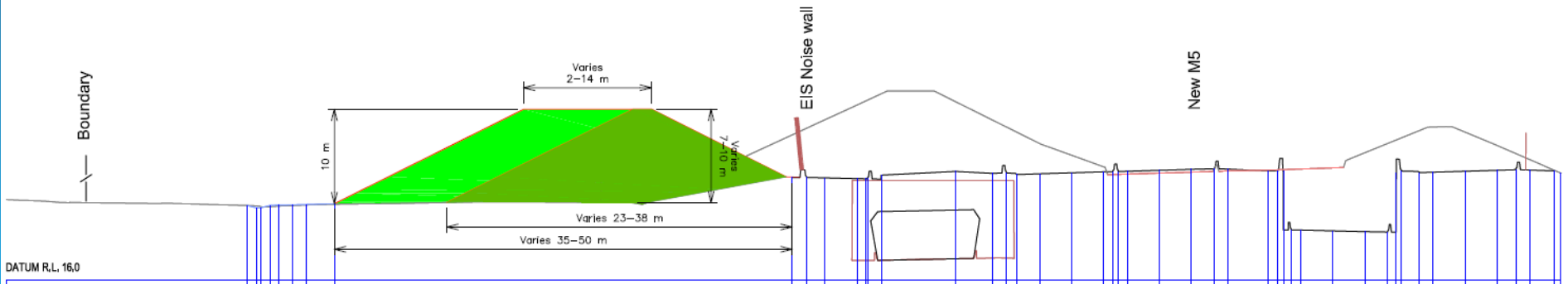
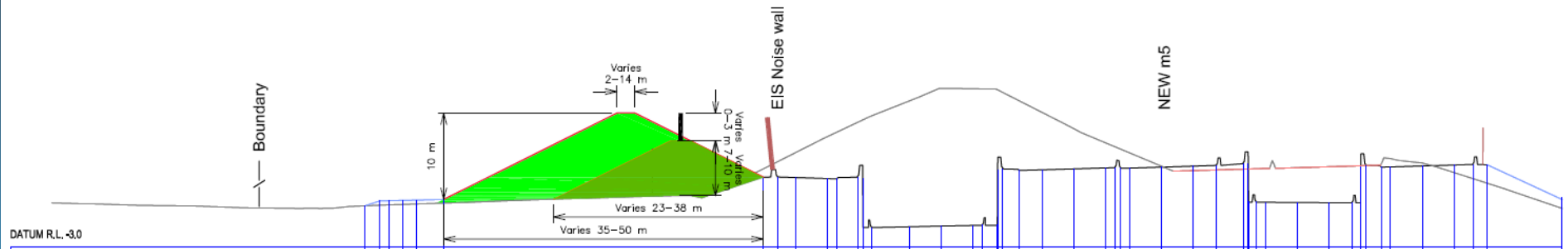
 Option 2: 7-10 m Variable height mound + 0-3 m Noise wall



All options (option 1, 2 and 3)

Aerial view – distance from property boundaries



Cross section – Option 1, 2 and 3



-  Option 1: 10 m Constant height mound
-  Option 2: 7-10 m Variable height mound + 0-3 m Noise wall

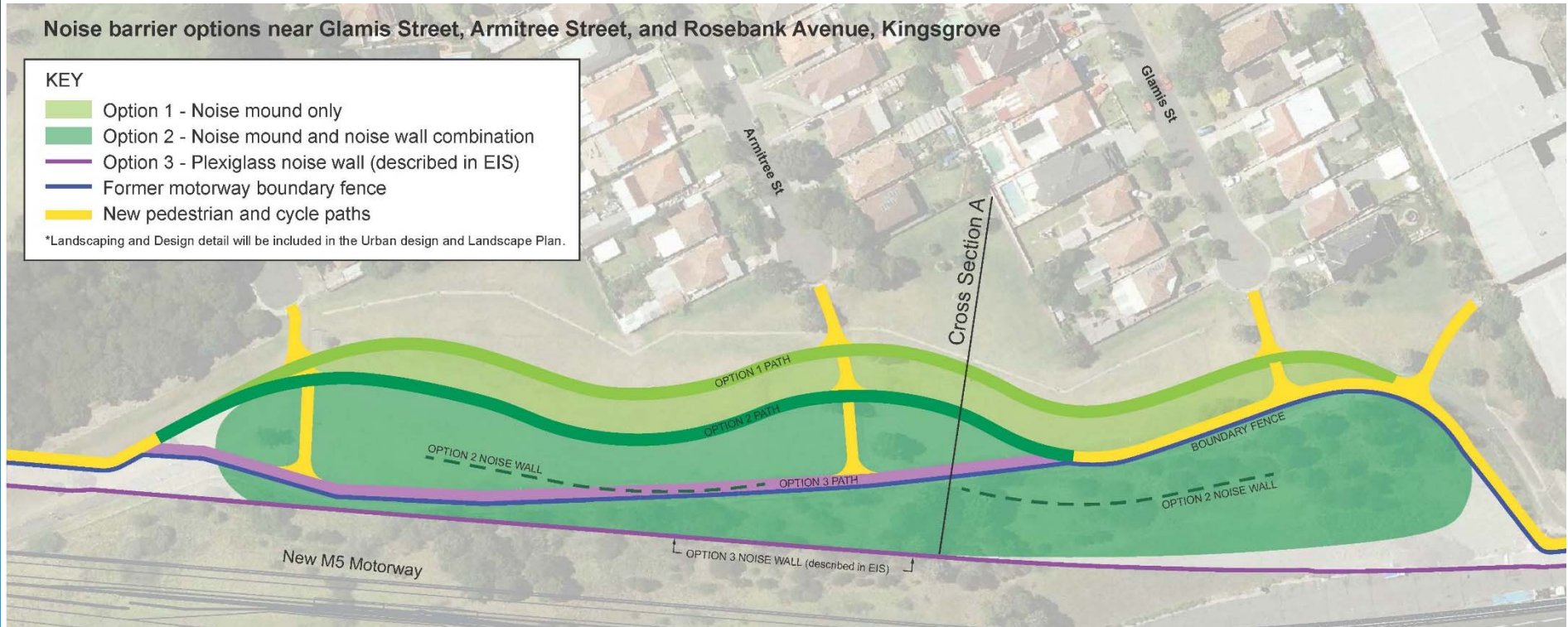
Recap: Noise barrier design options 1, 2, & 3

Noise barrier options near Glamis Street, Armitree Street, and Rosebank Avenue, Kingsgrove

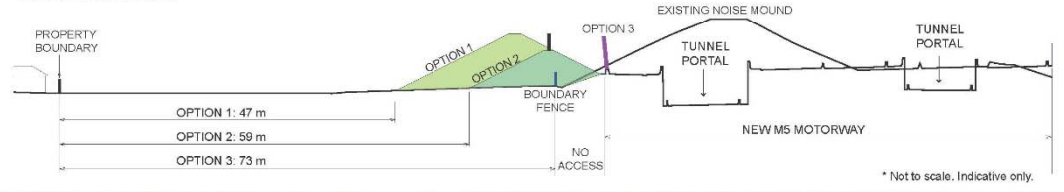
KEY

- Option 1 - Noise mound only
- Option 2 - Noise mound and noise wall combination
- Option 3 - Plexiglass noise wall (described in EIS)
- Former motorway boundary fence
- New pedestrian and cycle paths

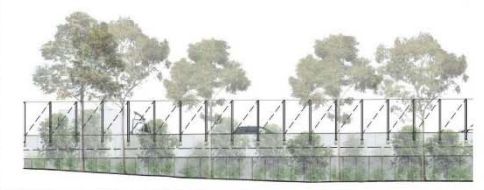
*Landscaping and Design detail will be included in the Urban design and Landscape Plan.



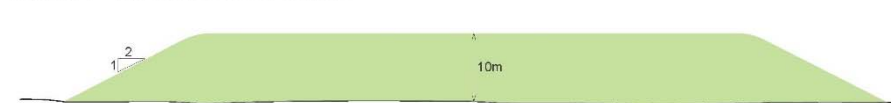
Cross Section A*



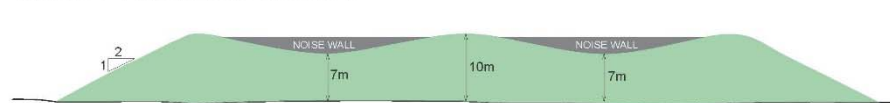
Artist impression of plexiglass noise wall (Option 3)



Option 1 - Noise mound elevation



Option 2 - Noise mound elevation



Your feedback is invited

We invite you to provide feedback on which noise barrier option you prefer.

You can do this by:

- filling in the questionnaire today and dropping it in the box provided
- mailing or emailing the questionnaire to us
- filling in the questionnaire online

Please provide your feedback by 5pm on Friday, 2 December 2016.

Next steps...

Nov 15 –
Jan 16

- EIS feedback sought from the community, submission received

Feb 16 –
Oct 16

- Further feedback received from the community
- Consultation with Canterbury Bankstown Council

Nov 16 –
Dec 16

- Community feedback sought on alternative designs

*We are
here*

Jan
2016

- Preferred solution selected based on consultation
- Feedback to community about decision

Early
2017

- Development of the detailed design for the preferred solution

Mid-
2017

- Finalise design and commence construction when possible
- Exhibition of Urban Design and Landscape Plan

New M5 Community Information Centre

The New M5 community information centre will be open in December 2016, you can visit us at **27 Burrows Road, St Peters**

You can also contact a member of the New M5 Community Team on:

- **1800 660 248**
- **info@newm5.com.au**

Questions and Discussion

WestConnex New M5

