

Week starting 24 August 2020 (Update no. 152)

Good afternoon

Below is an overview of Rozelle Interchange construction work happening across Lilyfield, Rozelle and Annandale next week.

We'd like to remind you of some **important pedestrian and cycle changes** happening from this **Friday 21 August** (work to make the change will happen from 8pm on Thursday 20 August). These changes include:

- opening of pedestrian and cyclist shared path between Victoria Road and ANZAC Bridge (similar to what existed previously)
- closing of Beatrice Bush Bridge across City West Link. This change may impact those travelling between Balmain and Glebe

For more information about these changes please refer to the traffic section below.

Night work next week

Noisy night work will be carried out on Monday 24 August, Tuesday 25 and Saturday 29 August between the hours of 7pm and 6am (weather permitting). If work cannot take place on these nights, a contingency night may be used on Wednesday 26 August. We'll advise you via email if a contingency night is required.

- mobilising/demobilising traffic control setup
- **utility work:** trenching, locating existing services, installing conduits/pipes and backfilling
- **median work & asphaltting:** demolition/installation of medians and barriers, milling and resheeting new road pavement
- **preparation for the demolition of Beatrice Bush Bridge:** removing some handrails and pavement and installing anchors
- **intersection work:** opening the ground to change traffic signals and relocate utilities, moving or installing new barriers and traffic islands, linemarking/linemarking removal, asphaltting
- backfilling and reinstatement of the work area



On **Saturday 29 August**, we'll be carrying out some significant night work to shift slightly the intersection at The Crescent/ City West Link (all traffic movements will remain the same). Similar work will be carried out at the intersection of The Crescent/ Johnston Street **on Monday 31 August** (TBC).

This work is called a **'traffic switch'** and will require significant traffic control arrangements and a high numbers of workers. As a result of this work, pedestrians, cyclists and traffic on The Crescent will be shifted onto a new road closer to Rozelle Bay. Details of the change are provided below.

Saw cutting to change traffic signals (sensor loops at the intersection) will generally be carried out towards the end of the night following the placement and cooling of asphalt. Unfortunately **traffic switches will generate high noise** on both nights and we apologise for any disruption this causes.

Key pedestrian/cyclist update

From this **Friday 21 August**, there will be two key changes to pedestrian and cyclist connectivity in Rozelle (in purple on map below):

opening of pedestrian and cycle shared **path between Victoria Road and ANZAC Bridge** (similar to what existed previously)

closing of Beatrice Bush Bridge across City West Link. To cross City West Link pedestrians and cyclists will need to cross Victoria Road at Gordon Street and travel down Victoria Road to the two-phased signalised intersection.

Please note, as work to make the changes will happen the night before, the changes will be implemented from approximately 8pm/9pm on Thursday 20 August.

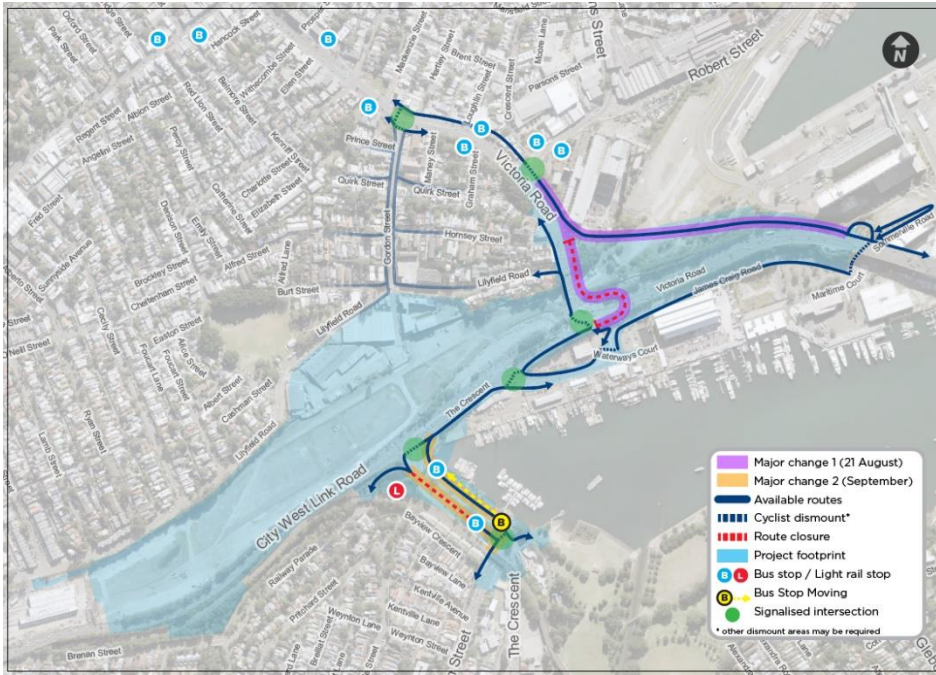
Pedestrians and cyclists who **currently use Beatrice Bush Bridge to travel to/from Glebe**, can either:

cross Victoria Road at Gordon Street, continue down Gordon Street and along Lilyfield Road to use the two-phased signalised intersection at City West Link or;

travel along the new shared path towards the ANZAC Bridge and loop back onto James Craig Drive towards Glebe

We understand this is a longer journey for people using this route and do apologise for any inconvenience caused. The Beatrice Bush Bridge must be removed to allow for construction of the tunnel portals in this area.

From **Tuesday 1 September**, there will be a key change for pedestrians/cyclists in Annandale shown in orange on the map below. Please look out for an email titled **Important changes to your route** for more information about these changes, that will be sent to residents shortly.



Key motorist changes

Following the night work referenced above, from **Sunday 30 August** there will be a key change for motorists in Annandale:

- The Crescent/City West Link intersection will be shifted entirely towards Rozelle Bay. Motorists will travel on a new section of road
- A section of City West Link near this intersection will also be shifted to the north inside the Rozelle Rail Yards. Motorists will travel on a new section of road

The Urban Design and Landscape Plan is now on public exhibition



The Urban Design and Landscape Plan (UDLP) is now open for viewing and formal submissions through our interactive portal which includes a virtual Community Centre. You can view the full plan, access the interactive map, read through the Community Guide, watch a virtual information session, register your feedback and more.

The UDLP outlines how open and green space for the community will be developed upon completion of the Rozelle Interchange Project. A key feature of the UDLP includes transformation of the Rozelle Rail Yards into an open green space of up to 10 hectares, similar in size to Victoria Park near Sydney University. This former inaccessible industrial land will become a community park, leaving a positive legacy for generations of residents.

[Click here to enter the virtual Community Centre](#)



Tunnelling update

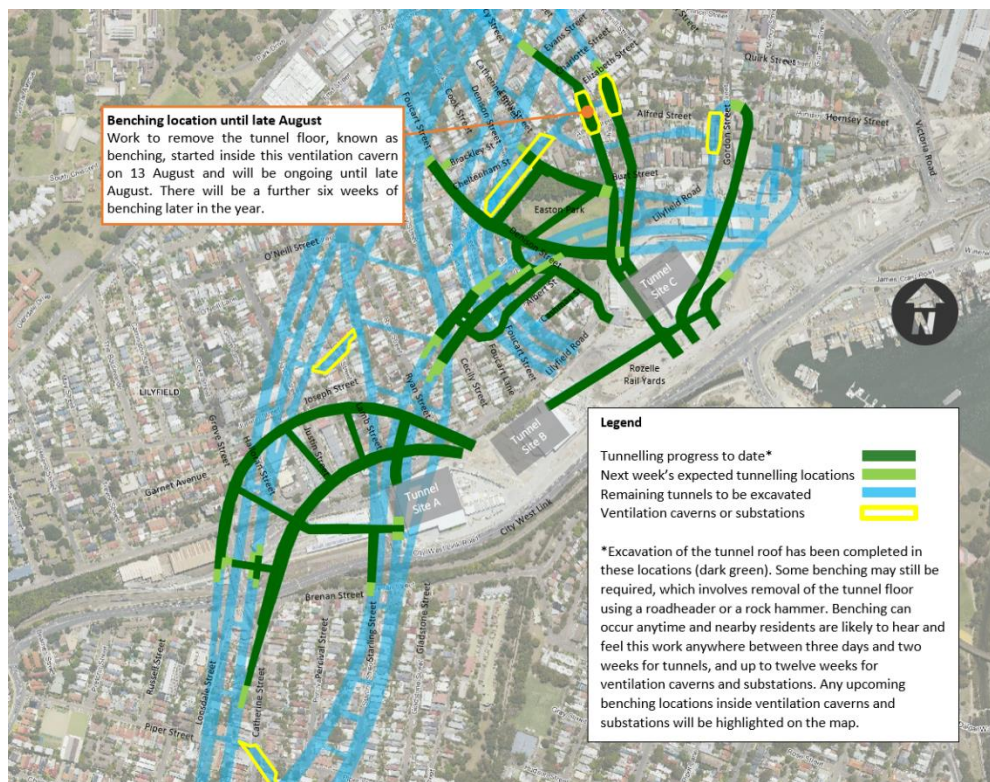
We currently have 17 roadheader machines excavating the future Rozelle Interchange tunnels. Next week's expected tunnelling locations are shown in the map below. For more information about the tunnel locations and depths, please visit the online Tunnel Tool [here](#).

Changes to hours of operation for tunnelling

As of Monday 24 August, tunnelling for the Rozelle Interchange will mainly be carried out between **6am Monday and 6am Saturday (24 hours per day)** across all three tunnel sites. Please note the project has approval to carry out tunnelling activities 24 hours per day, seven days a week and work may occasionally take place inside the tunnels between 6am Saturday and 6am Monday, as required.

Courtesy notice: benching under Alfred and Elizabeth streets

- **24/7 removal of spoil**
The project has approval to remove excavated material from inside the tunnels, called spoil, 24/7 using trucks. Up until now, spoil has been removed from the Rozelle Rail Yards site during the day time. As tunnelling activities continue to ramp up and the amount of excavated material is increasing, we'll need to remove spoil at night. As of next week, removal of spoil will occur 24/7. Trucks will enter the site via the intersection on City West Link and will be loaded inside the large acoustic sheds within the railyards. As such, we don't predict any high noise impacts to nearby residents.
- **Benching under Alfred and Elizabeth streets**
Work to remove the tunnel floor, known as benching, started inside the ventilation cavern on 13 August as shown on the map below. This work will be ongoing until late August, and there will be a further six weeks of benching later in the year.



Construction FAQs

For more information about standard construction rules, please click [here](#). This information includes:

- Hours of work
- Standard equipment used
- How we mitigate impacts to residents

How to contact us

In line with recent NSW Government health advice regarding COVID-19 and to ensure the safety of the community and staff, we are re-closing the Community Information Centre at 84 Lilyfield Road Rozelle. For any information you may require, please email us at info@rozelleinterchange.com.au with your enquiry and a contact number for us to call you.

If you want to know more about our work or to make a complaint, please **email** info@rozelleinterchange.com.au or contact the Rozelle Interchange Community Team on **1800 660 248**.

Kind regards
Carla, Laura and Elle

The Community Relations Team