

Rozelle Interchange

WestConnex



Iron Cove weekly work update

Week starting Monday 16 November (No.204)

Good afternoon

Below is a summary of Rozelle Interchange construction work taking place at Iron Cove next week. Residents impacted by our work on local streets will be provided a more detailed update in the coming days. This update has been broken into the following sections:

- next week's night work
- upcoming power outage and associated night work
- tunnelling update
- Balmain slope sewer relocation update
- traffic changes next week
- general construction information



In the coming weeks we'll be rolling out our new web portal which will eventually replace all work updates and

notifications at Iron Cove. You'll be able to view all construction information and work happening conveniently from any device. Other key features will include sending upcoming work directly to your device calendar and filtering information so that it's tailored to your needs. We encourage you to subscribe to our eupdates and let your neighbours know about the upcoming rollout who might not currently receive work update emails from us.

Night work

Night work will be carried out on Victoria Road on **Tuesday 17** and **Thursday 19 November** between the hours of 7pm and 6am, weather permitting. We'll let you know if a contingency night is required throughout the week.

Work will include:

- mobilising/demobilising traffic control setup each night
- **potholing and trench excavation** to install new stormwater drainage and utilities services
- **service investigations** for the Sydney Trains Pilot Cable
- **jointing work** to commission new power services

Trench excavation is a loud construction activity involving road sawing and rock hammering. As a result, night work next week is unfortunately expected to continue to create **high levels of noise** and we sincerely apologise for this.

Service Investigations involving saw cutting and a vacuum truck.

Reminder: Jointing commissioning work on Victoria Road to make live new power services will be carried out on **Sunday 15 November** between 7pm and 6am.



Equipment used for commissioning work on Sunday includes but is not limited to: road saws, vacuum trucks, excavators with hammer attachments, hand tools and construction vehicles. As a result of using this equipment we expect commissioning work on Sunday to be noisy. Work normally planned the following Monday will be rescheduled to another work night.

While the Project prefers to carry out work during the daytime when shifts are longer and workers are readily available we're unable to do so when working on busy roads such as Victoria Road. We must carry out work at night when traffic volumes on these roads are lower and we can maintain safety of workers and the surrounding community.



Reminder of upcoming power outages and nightwork:

- **Tuesday 17 November:** 11hr power outage from **7pm to 6am** (Victoria road utility work)

Please refer to the **attached** document for further information about night work this **Sunday 15 November** and **Tuesday 17 November**.

*Please note, Ausgrid have advised us that the power outage scheduled for **Tuesday 17 November during the day** has been **postponed** until further notice. This outage would have likely impacted residents on **Toelle Street** and residents will be renotified by Ausgrid prior to the rescheduled power outage occurring.

Please contact us if you have extenuating circumstances during the above power outage.

Tunnelling update

Daytime tunnel excavation will continue next week within our work site adjacent to Callan Street. So far the roadheader has excavated 25 meters of the area show in dark green in the side map. Next week's expected tunnelling location is shown in light green.

From now until mid-December we'll continue with trench excavation inside our work site using a roadheader and excavator with a hammer attachment. This activity will continue to be carried out during standard (daytime) construction hours from **7am to 6pm** each day however is unfortunately expected to generate high noise. Rock hammering will be undertaken in blocks of three hours, with a respite hour at **11am and 3pm**.

After trench excavation is complete we'll place a roof over the top and install a **large roller door** at the end.

The roller door will serve as the entrance to the tunnels below ground, enclosing noise from tunnelling activities similar to an acoustic shed in preparation for both day and night time tunnelling to start beneath Callan Street properties in early December.

You may have noticed that we've started to install **prism markers** in local streets (small grey markers on the road, kerbs and footpaths) and will continue installation over the next few weeks between Moodie and Callan streets.

The prism markers will be used by the project's dedicated ground monitoring team to regularly monitor the surface for any movement during and after tunnel excavation. You'll notice our surveyors on the streets where the markers have been installed more frequently (up to two times a day) to



collect data from the markers.

Our **tunnelling information pack** is attached to this email, for your reference. Additionally, our interactive tunnel tool is a helpful guide to understand the location and depths of the tunnels in relation to your home. The link to our tunnel tool is: <https://v2.communityanalytics.com.au/ric/rozelle-interchange>.

Balmain slope sewer relocation

We're progressing with work to relocate the existing Balmain slope sewer currently servicing Rozelle, Lilyfield and Balmain. The Balmain sewer line is one of the utilities being relocated to enable construction of the future tunnel entry and exit portals in the middle of Victoria Road.

To date we've bored approximately 410 metres and trenched approximately 115 metres of the new sewer out of the total 628 metres required for completion. We've also built most of the new manholes for future servicing by Sydney Water.

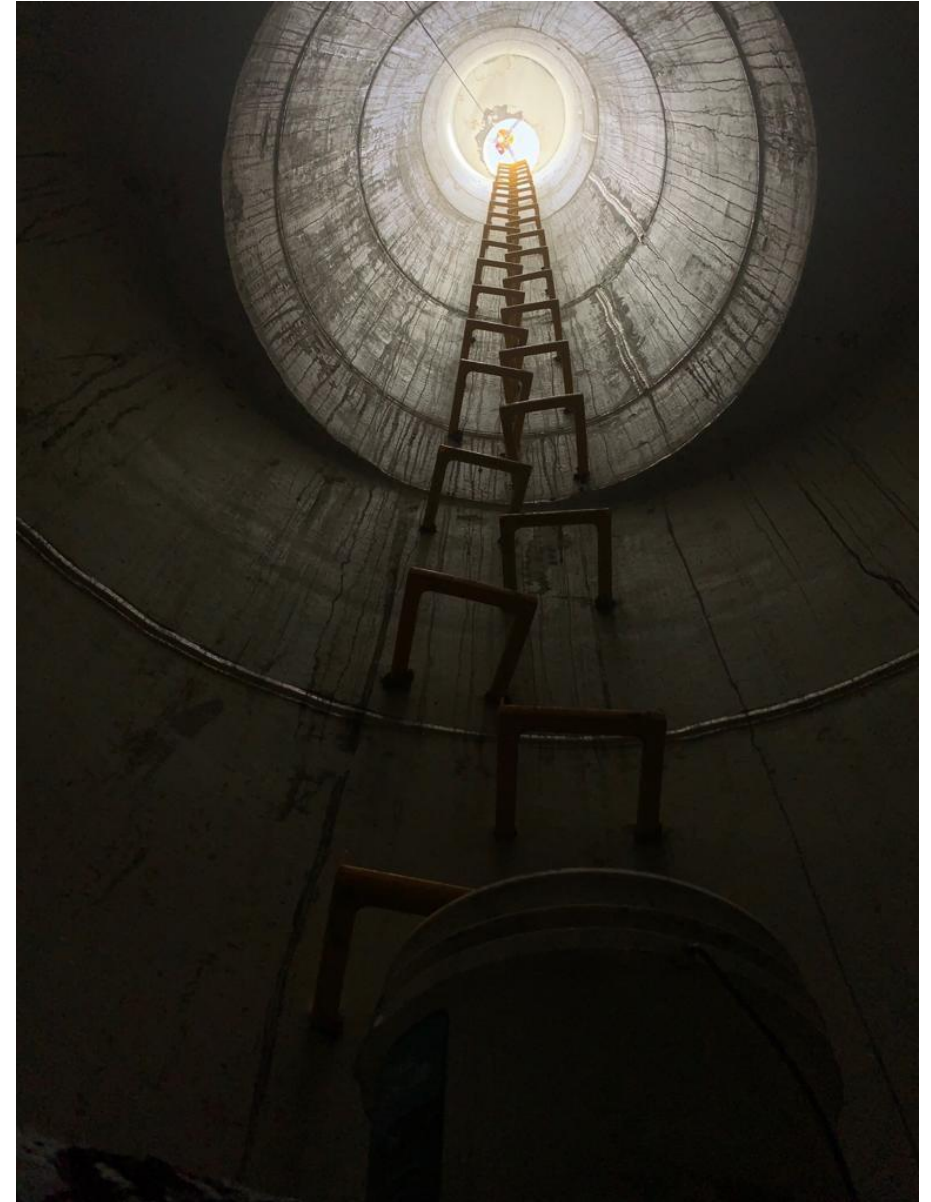
The image to the right was taken inside a completed manhole we recently built on Moodie Street adjacent to Victoria Road at approximately 13 metres deep and 1.8 metres wide.

Work programme update

Unfortunately while boring the new sewer line (known as micro-tunnelling), the boring machine has met a thick concrete wall underground which means we cannot progress with finalising the remainder of the new sewer line until the concrete wall has been removed.

As a result, commissioning of the new sewer is expected for completion in Q1-2021 when we'll also remove our temporary work sites and reopen the road closures currently in place for this work to traffic.

We sincerely apologise for the impact this change in programme may have and our crews are working as hard as possible to



remove the concrete wall in order to progress with micro-tunnelling the remainder of the new sewer line.

We sincerely thank all residents for your patience to date and apologise for the inconvenience and disruption caused by our work. Further information has been provided to residents directly impacted by this programme delay.



The map to the left shows the route of the new Balmain sewer line:

- **Green** shows the new sewer line we've completed to date while **Red** shows the sewer line remaining for completion

Once we've completed creating the new sewer line, commissioning and restoration work, we'll need to grout fill the old sewer which will be made redundant in early 2021.

**Grout filling will involve a large number of concrete truck deliveries in various locations and we'll be able to confirm how many truck movements per day in each grout filling location closer to the time.*

Daytime traffic changes on local streets

The following traffic and pedestrian changes will be in place on the days allocated below, between **7am and 6pm** next week:

Springside Street

On **Wednesday 18** and **Thursday 19 November** a road closure will be in place on Springside Street at Victoria Road from **7am to 6pm** to safely facilitate cable pulling work by Ausgrid, following the Tuesday night work under a power outage. These cables will be removed from within the roadway on Victoria Road nearby Springside Street (highlighted **green** below) as they'll be made redundant.

We expect this work to be noisy as we'll be using an excavator, saw cutter and vacuum truck to expose and remove the redundant cables. We'll then be using compaction machines to backfill and compact ground materials in place.

During this work residential access will be maintained for residents on Springside Street (between Victoria Road and McCleer Street) via Callan and McCleer Streets. Traffic control will be in place to safely assist residential access, cyclists and motorists.

Manning Street

Trenching will continue on Manning Street at the Toelle Street intersection from **Monday 16 to Friday 20 November**.

Motorists, cyclists and pedestrians travelling along Manning Street will be detoured via Callan, Moodie and McCleer streets during work periods. Please allow for extra time travelling to and from Manning Street during this time. We'll also avoid carrying out this work on Manning Street on Saturdays due to traffic volumes in the area for Little Athletics.

Moodie Street

Trenching and service investigations for the Sydney Trains Pilot cable will continue on Moodie Street from **Monday 16 to Saturday 21 November** (work areas are highlighted pink in the below map).

Residents living on Manning Street, between Darling and Moodie streets, are encouraged to enter from Darling Street next week during standard daytime construction hours from **7am to 6pm**. We expect this work on Moodie Street to take **up to 3 weeks** to complete (weather permitting).

Traffic changes Monday 16 to Saturday 21 November (day work):



Other important work happening within our work sites

We've started initial excavation and trenching for the future Mechanical Operations Complex (MOC) between Callan and Toelle streets. This work involves mechanical hammering to help rock breaking during deep excavation work. Unfortunately rock-breaking is a high noise activity and we sincerely apologise for this.

Excavation and trenching work will be ongoing intermittently for the remainder of the year and we apologise for any disruption caused.

General construction FAQs

For more information on work hours, equipment used, and how we're mitigating impacts on Iron Cove residents please [click here to see our Construction Factsheet](#).

How to contact us

In line with recent NSW Government health advice regarding COVID-19 and to ensure the safety of the community and our staff we've closed the Community Information Centre at 84 Lilyfield Road Rozelle. For any information you may require, please email us at info@rozelleinterchange.com.au with your enquiry and a contact number for us to call you.

Please note, you cannot respond directly to this email. If you want to know more about our work or to make a complaint, please contact us. Our contact details can be found below.

If you have any suggestions or ideas regarding what you'd like to see in this weekly update going forward, please let us know. We welcome and appreciate your feedback.

Have a nice weekend.

Kind regards

Pam, Bek & Roos
Community Relations Team Iron Cove



Constructed by



1800 660 248

| info@rozelleinterchange.com.au |

westconnex.com.au