

Partial opening of St Peters Interchange green space and shared path

We're pleased to let you know that in the coming days, we will be opening the shared pedestrian and cycle path located within the St Peters Interchange adjacent to the Princes Highway.

This new shared path will provide access to the community between the corner of Princes Highway and Canal Road and Albert Street and forms part of the 6.5 hectares of new public space that is being delivered as part of the WestConnex M8 Project.



We are also working to complete the final remediation and testing of the section of green space adjacent to this path which was also affected by the recent heavy rains. We would like to thank the community for their patience as we complete our final works in this area.

Please see map overleaf for the location of the green space and shared path that will be opening.



Australian Government

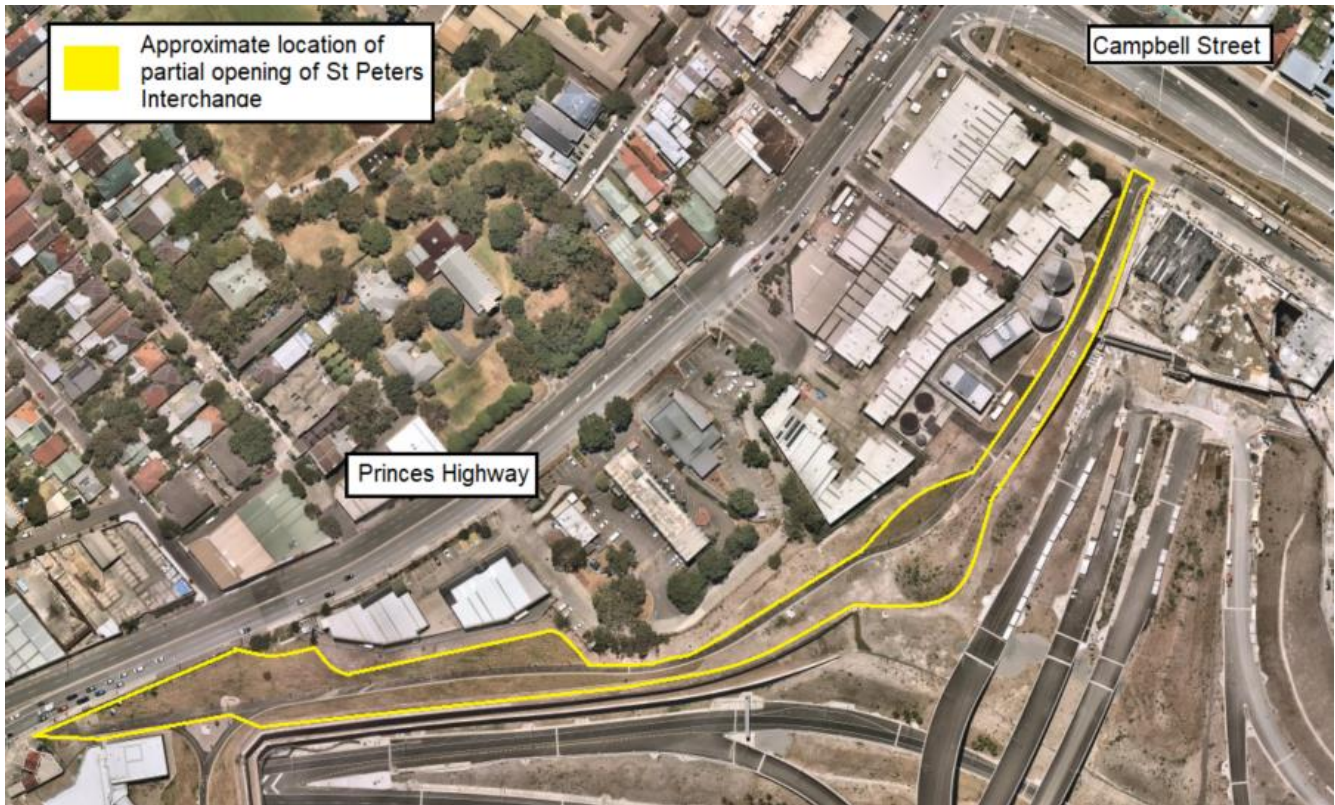
BUILDING OUR FUTURE



WestConnex

Transurban

Approximate location of the green space and shared path land opening at St Peters Interchange, St Peters, closest to the Princes Highway.



If you have a question about this work, please call 1800 660 248 (toll free) and ask to speak with the M8 Community Engagement team or email info@westconnex.com.au



We speak your language

Chinese

了解詳情請上網

www.westconnex.com.au/yourlanguage 觀看(普通話) 視頻, 並查閱有關WestConnex的更多訊息。如需要傳譯員請
。撥電話傳譯服務 **131 450**

Arabic

اعرف المزيد بزيارة الموقع
www.westconnex.com.au/yourlanguage
وذلك لمشاهدة الفيديوهات الخاصة بالمشروع باللغة العربية
وقراءة المزيد عن وست كونكس. إذا كنت في حاجة إلى
مترجم, اتصل بخدمة الترجمة الخطية والشفهية على الرقم
.131 450

Korean

www.westconnex.com.au/yourlanguage 를 방문하여 한국어로 된 프로젝트 비디오를 보고 WestConnex 에 관해 읽고 배우세요.
통역이 필요하시면 번역 및 통역 서비스 **131 450** (TIS) 으로 전화 하십시오.

Vietnamese

Hãy tìm hiểu thêm và viếng trang mạng
www.westconnex.com.au/yourlanguage để xem phim ảnh bằng Việt ngữ về công trình này và đọc thêm về WestConnex.
Nếu quý vị cần thông ngôn viên, xin vui lòng gọi Dịch Vụ Thông Ngôn Phiên Dịch số **131 450**.