

# Rozelle Interchange

## WestConnex

Weekly work update | Rozelle, Lilyfield & Annandale

9 December 2020

Week starting 14 December 2020 (Update no. 225)

Dear residents

This will be the final Wednesday work update for the year as construction work (including tunnelling) will cease across the project from Saturday 19 December 2020 and recommence on Monday 4 January 2021.

Should you have any urgent complaints or enquiries during this time, please contact us on 1800 660 248 and ask to speak to a member of the Rozelle Interchange Community Relations Team.



We'd like to take this opportunity to wish everyone a Merry Christmas and hope that you and your family can join us for a free ice cream at Lilyfield Playground or Easton Park and Lilyfield Playground one afternoon next week:



**Lilyfield Playground (80A Railway Parade, Annandale)**

**4 to 6.30pm Wednesday 16 December**



**Easton Park (Lilyfield Road, Rozelle)**

**4 to 6.30pm Thursday 17 December**



For those of you unable to make the ice cream trucks, we'd like to extend our thanks for your tolerance and understanding this year. We've completed a lot of construction work in the area and we understand that this has at times, had a considerable impact on the local community, which was undoubtedly increased by COVID-19.



The Rozelle Interchange project team wishes everyone a safe and enjoyable Christmas and New Year period.



### Courtesy notice - changed traffic conditions on Victoria Road on Saturday 12 December

From 5am on Saturday 12 December, traffic lanes will be reduced on Victoria Road in both directions between Evans Street and the Iron Cove Bridge and pedestrian detours will be in place between Moodie and Callan streets and Wellington and Terry streets.

Traffic control will be in place to safely assist motorists, cyclists and pedestrians around the work areas.

Please allow for extra time travelling to and from Victoria Road this Saturday in both directions.

## Work next week

Below is an overview of Rozelle Interchange night work and tunnelling happening across Rozelle, Lilyfield and Annandale next week. We've also included a reminder at the end of this update about the new bus stop on Victoria Road at Hornsey Street expected to open on Wednesday 16 December.

### Night work next week

As advised last week, night work is scheduled for tonight and Friday night.

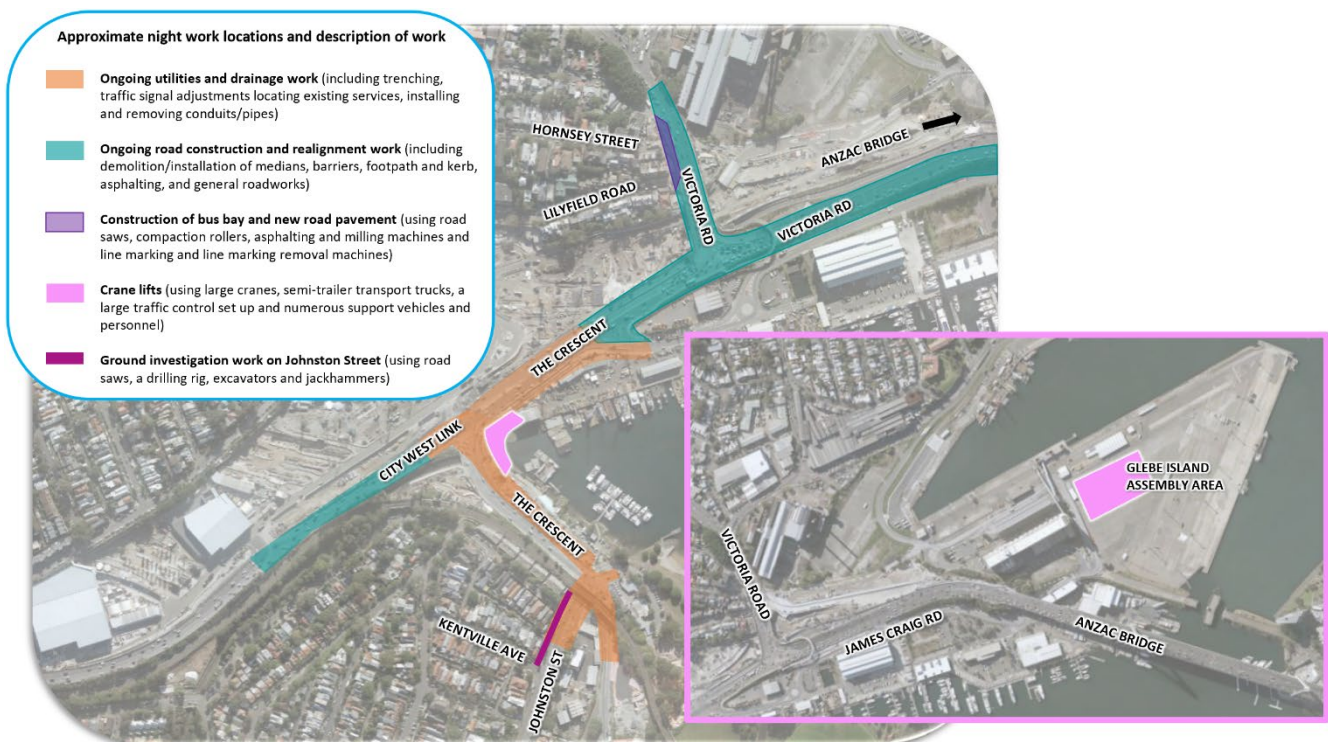
Noisy night work next week will be carried out on **Monday 14, Tuesday 15 and Friday 18 December (7pm to 6am)** and is expected to create moderate to high noise that may be heard by nearby residents. We sincerely apologise for this.

We've highlighted the approximate locations of night work next week in the map below. Our ongoing night work activities next week include:

- mobilising/demobilising traffic control setup
- **utility and drainage work**
- **road construction and realignment work**
- backfilling, compacting and reinstating the work area at the end of the shift.

**This work is subject to site and weather conditions and may need to be rescheduled.** Please note that other activities which are non-intrusive (below a certain noise level) such as oversized deliveries, adjusting barriers and fencing and traffic control setup may occur outside of the highlighted areas.

On **Tuesday night** (pending weather), we'll be **installing the final five girders of the new Whites Creek Bridge inside The Crescent East site**. A large crane will load the girders onto transport trucks at our Glebe Island Assembly Area. A larger crane will be set up inside the site to lift the girders off the transport truck and into position. This is not expected to generate high noise, however nearby residents may hear the crane as it manoeuvres. You may also notice that our traffic control set up is larger than usual and there will be additional escort and support vehicles and personnel. We expect to install all five girders in one shift, pending site and weather conditions.



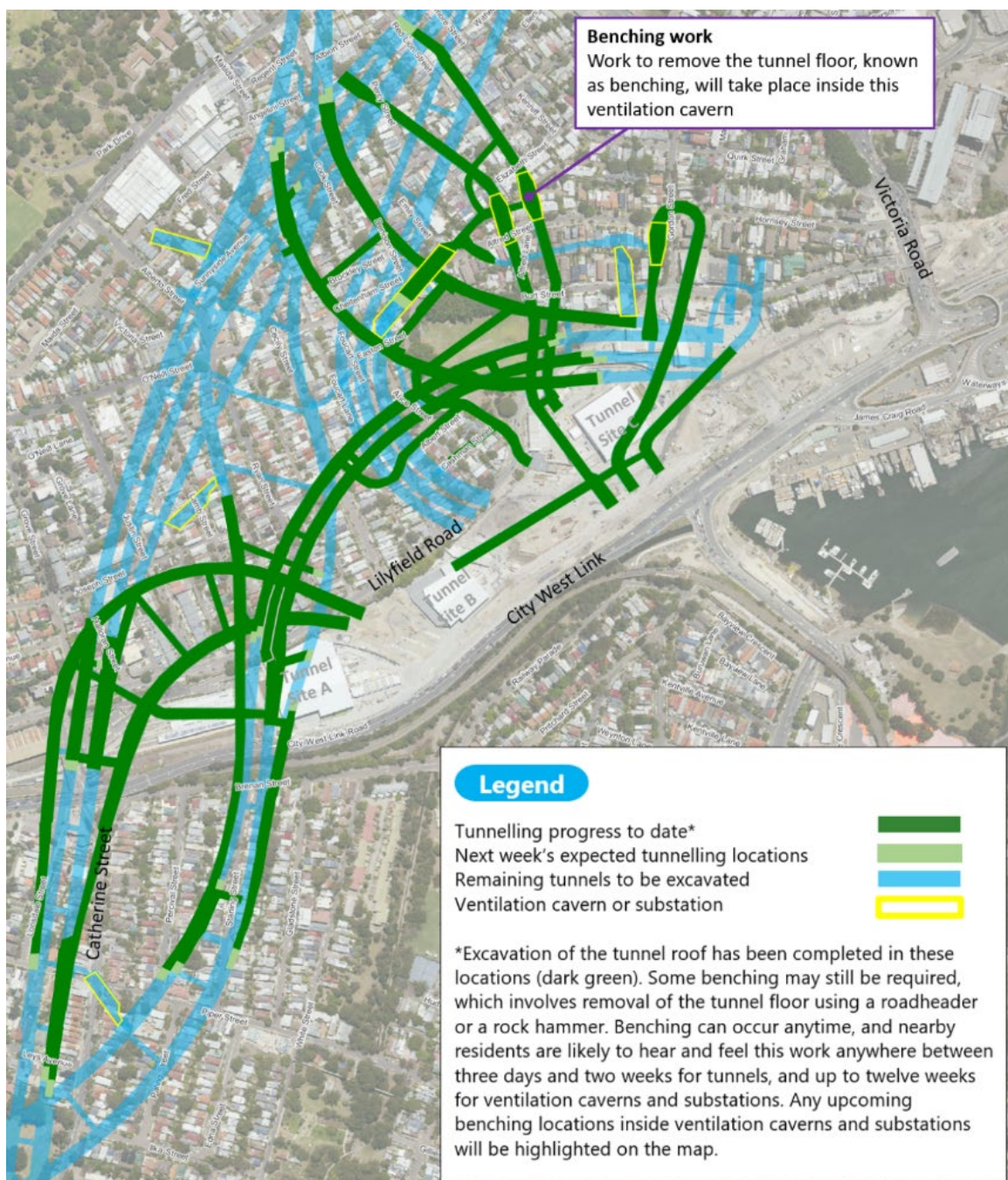
Work is typically permitted to start on Victoria Road, City West Link and The Crescent from 10pm and every effort is made to complete the noisy activities as early as possible. Work in other locations, including the Glebe Island Assembly Area may be permitted to start earlier. For information about how we manage noise from our work, please take a look at the [Construction Fact Sheet](#).

## Tunnelling update

Excavation of the future Rozelle Interchange tunnels is progressing with 22 roadheaders in operation. Next week's expected tunnelling locations in Rozelle and Lilyfield are shown in the map on the right.

This is a reminder that the project has approval to carry out tunnelling activities 24/7, including the removal of spoil (excavated material) from inside the tunnels.

For more information about the tunnel locations and depths, please visit the online Tunnel Tool [here](#).



# Our progress this year

Every week we show you some photos of the progress we're making on site and we hope you find these interesting. This week we thought we'd show you the overall progress of work in the Rozelle Rail Yards and our sites on The Crescent since November 2019.

**November 2019**

**M4 Tunnel portals**

**Western Harbour Tunnel portal**

**Tunnel acoustic sheds completed and tunnelling is well underway**

**M8 Tunnel portal**

**First section of new road and shared user path built on The Crescent**

**Bridge construction is well underway – the new Whites Creek Bridge (above) and the first pier for the Whites Creek Link (below)**

**M8 Tunnel portal**



## New bus stop opening on Victoria Road at Hornsey Street

The **new bus stop on Victoria Road at Hornsey Street is expected open on Wednesday 16 December**, shown in the map on the right, pending weather conditions.

The existing bus stop on Victoria Road before Maney Street (Stop ID 203921) will remain in operation.



## How to contact us

In line with recent NSW Government health advice regarding COVID-19 and to ensure the safety of the community and staff, the Community Information Centre at 84 Lilyfield Road Rozelle remains temporarily closed.

**If you would like to know more about our work or to make a complaint, please contact us at the details provided below.**

**P:** 1800 660 248

**E:** [info@rozelleinterchange.com.au](mailto:info@rozelleinterchange.com.au)

We'll endeavour to resolve your complaint or answer your enquiry as quickly as possible, and you will receive a response from the project within five business days.



## Construction FAQ's

For more information about standard construction rules, please click [here](#). This information includes hours of work, standard equipment used and how we mitigate impacts to residents

## Thank you for your generosity!

To close out this update, we'd like to thank all of those who so generously contributed to our Christmas Gift Drive and for the positive support we have received.

Through your generosity, that of our employees, subcontractors, and other project affiliates, over 800 gifts were donated to The Smith Family as part of the Toy and Book Appeal.

The Project also raised more than \$48,000 for two local charities; the PCYC Balmain and the Harding Miller Education Foundation. You can view the latest video update [here](#).

Thank you.

Kind regards

**The Community Relations Team**