

Week starting August 2020 (Update no. 157)

**You may need to wait momentarily for the images to load*

Good afternoon

Below is an overview of Rozelle Interchange construction work happening across Lilyfield, Rozelle and Annandale next week. We've broken the update down into the following sections:

- Night work next week
 - Traffic switches at The Crescent
 - Removal of Beatrice Bush Bridge (first of four sections)
- Important pedestrian, cyclist and motorist changes in Annandale next week
- Tunnelling locations next week
- Progress shots

We aim to include relevant information in these weekly updates that may impact you, so we encourage you to take time to read the below details. We continue to thank you for your patience while we carry out construction work in this area.

Night work next week

Please be reminded that night work will be carried out this **Saturday 29 August** between the hours of 7pm and 10am (Sunday).

Next week noisy night work will be carried out on **Monday 31 August (7pm to 6am), Wednesday 2 September (7pm to 6am) and Saturday 5 September (7pm until 10am on Sunday)**. We've highlighted the approximate locations of night work next week in the below map. Please note, that other activities such as traffic control setup may occur outside of the highlighted areas:

- mobilising/demobilising traffic control setup
- **utility work:** trenching, locating existing services, installing conduits/pipes and backfilling
- **median work & asphaltting:** demolition/installation of medians and barriers, milling and resheeting new road pavement
- **demolition of Beatrice Bush Bridge:** removing some handrails and pavement and installing anchors
- **Traffic switches:** opening the ground to change traffic signals and relocate utilities, moving or installing new barriers and traffic islands, linemarking/linemarking removal, asphaltting
- backfilling and reinstatement of the work area



Each of the above night time activities will involve the intermittent use of road saws, rock hammers, asphaltting machines, cranes, rattle guns and line marking removal equipment. These activities all create **high noise that may be heard by nearby**

residents and every effort is made to complete these activities as soon as possible. However, depending on the location of work (such as City West Link), we may not receive approval to start work on the road until 11pm which unfortunately delays the start and completion of the activity.

Key night work

There will be some key pieces of night work over the coming weeks as we complete some major traffic switches and remove the Beatrice Bush Bridge over City West Link.

Traffic switches

Traffic switches are where the layout or location of an intersection or section of road are changed. These switches are usually carried out at night when traffic volumes are lowest. Large temporary traffic control setups involving police personnel, and high numbers of workers are required to complete traffic switches.

On **Saturday 29 August (between 7pm and 10am the next day)**, we'll be slightly shifting the intersection at The Crescent/ City West Link. Similar work will be carried out at the intersection of The Crescent/ Johnston Street on **Tuesday 2 September (between 7pm and 10am the next day)**. All traffic movements will remain the same following both shifts.

Saw cutting to change traffic signals (sensor loops at the intersection) will generally be carried out towards the end of the night following the placement and cooling of asphalt. Unfortunately **traffic switches will generate high noise** on both nights and we apologise for any disruption this causes.

Removal of the Beatrice Bush Bridge

The Beatrice Bush Bridge is being removed to allow for the Victoria Road/The Crescent intersection to be rebuilt and the future tunnel portals constructed.

The bridge was named after [Beatrice Bush](#) (pictured on the right) who became a **local icon, selling newspapers every day on the bridge for 25 years** in all weather conditions. Whilst the bridge cannot be retained, the plaque from the bridge is being gifted back to Beatrice's family and efforts are being made to continue her legacy in the final urban design of the project.

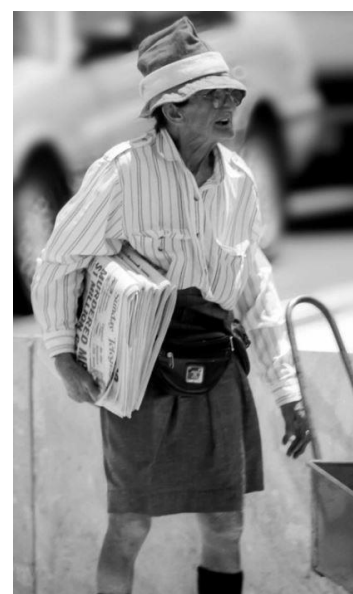
On **Saturday 5 September (between 7pm and 10am Sunday)**, we'll start removing the Beatrice Bush Bridge over City West Link. The bridge will be removed over four nights as per the sequence shown below. Bridge removal work will involve sawcutting the bridge structure to separate the various sections, and then have a crane safely remove pieces. Again, this work will involve a large traffic control setup including police personnel, and a high number of workers.

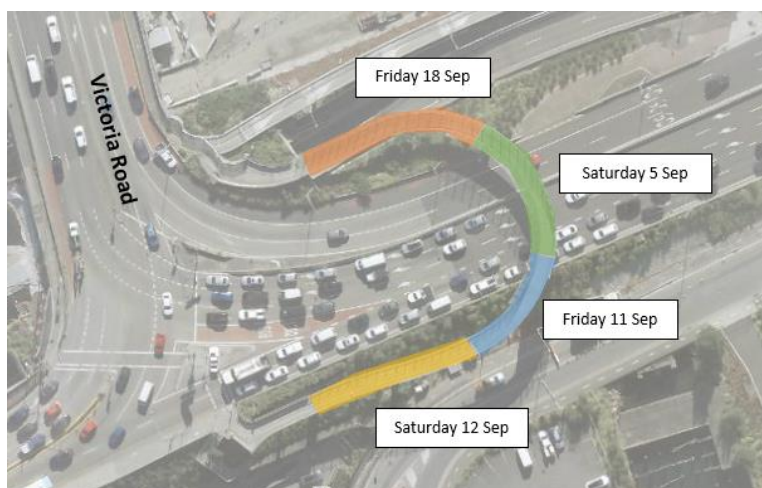
For residents using ANZAC Bridge on Saturday 5 September:

To facilitate work on **Saturday 5 September**, there will be the following **major traffic changes** in place on the ANZAC Bridge:

- reduced lanes and changed traffic conditions along Victoria Road and ANZAC Bridge between 8pm (Saturday) and 10am (Sunday)
- **ANZAC Bridge closed in both directions from 1am until 5:30am on Sunday**
- detours will be in place on Victoria Road, City West Link, The Crescent and the Western Distributor on approach to the ANZAC Bridge
- **plan ahead, watch for signs and follow detours**
- we encourage local residents to avoid using ANZAC Bridge on this night if possible

Further information about these traffic changes will be provided in next week's update





Key pedestrian/cyclist and motorist changes

From **Sunday 30 August** there will be some key changes for motorists and cyclists in Rozelle and Annandale. These changes are shown in orange on the map below

For motorists:

- all traffic lanes on The Crescent between the Johnston Street/Chapman Road and City West Link intersections will be shifted east onto a newly constructed roadway (closer to Rozelle Bay), and lanes on City West Link will shift slightly north into the Rozelle Rail Yard site. All current traffic movements will be maintained however motorists will travel on a new section of road as shown in the map below.

For cyclists:

- the bicycle lanterns (at the traffic lights) will be removed from the signalised crossing at City West Link and The Crescent making this a dismount point for cyclists.

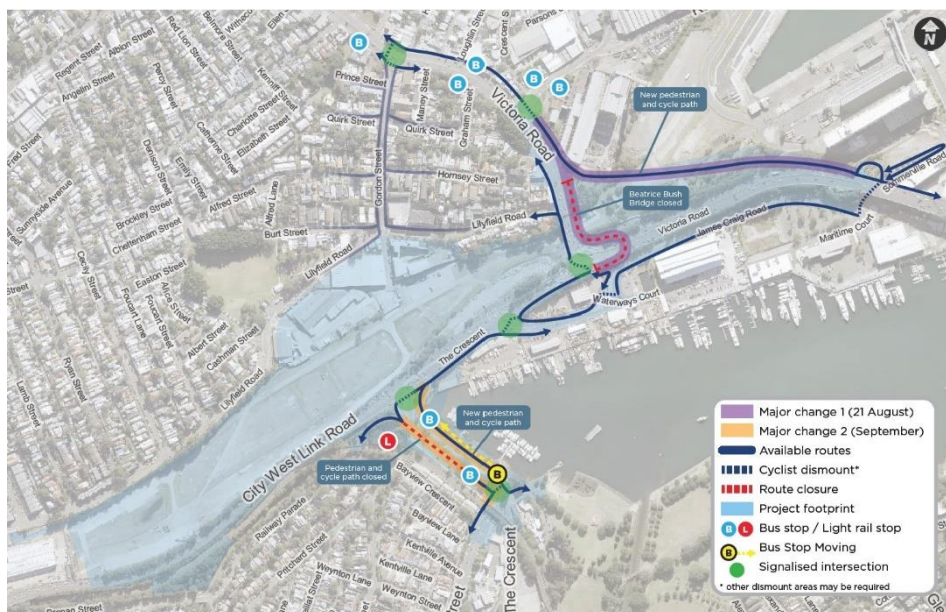
From **Thursday 3 September** there will be some key changes for pedestrians, cyclists and bus commuters in Annandale:

For pedestrians and cyclists (shown in orange below):

- a new pedestrian and cyclist shared path will open adjacent to the new road closer to Rozelle Bay
- the pedestrian and cyclist shared path on The Crescent (next to the mural) will be closed between the former Buruwan Park and the northbound bus stop

For bus commuters (shown in yellow below):

- the southbound bus stop on The Crescent (Stop ID 203811) will be relocated north towards the City West Link intersection on the new path



We're excited to announce that the **shared path between Victoria Road and ANZAC Bridge is now open** to pedestrians and cyclists.

If you are travelling between Balmain and Glebe/Annandale, we encourage you to take one of the following alternate routes:

- travel along the shared path towards the ANZAC Bridge, loop under at the first soldier statue, and along James Craig Drive to the Glebe foreshore OR;
- travel to the Gordon Street intersection, cross Victoria Road and continue down Gordon Street to Lilyfield Road, travel to Victoria Road and down to the existing signalised intersection with City West Link/The Crescent (route for cyclists)
- travel to the Gordon Street intersection, cross Victoria Road and turn left to head down to the existing signalised intersection with City West Link/The Crescent (route for pedestrians)



The Urban Design and Landscape Plan is now on public exhibition



The Urban Design and Landscape Plan (UDLP) is now open for viewing and formal submissions through our interactive portal which includes a virtual Community Centre. You can view the full plan, access the interactive map, read through the Community Guide, watch a virtual information session, register your feedback and more.

The UDLP outlines how open and green space for the community will be developed upon completion of the Rozelle Interchange Project. A key feature of the UDLP includes transformation of the Rozelle Rail Yards into an open green space of up to 10 hectares, similar in size to Victoria Park near Sydney University. This former inaccessible industrial land will become a community park, leaving a positive legacy for generations of residents.

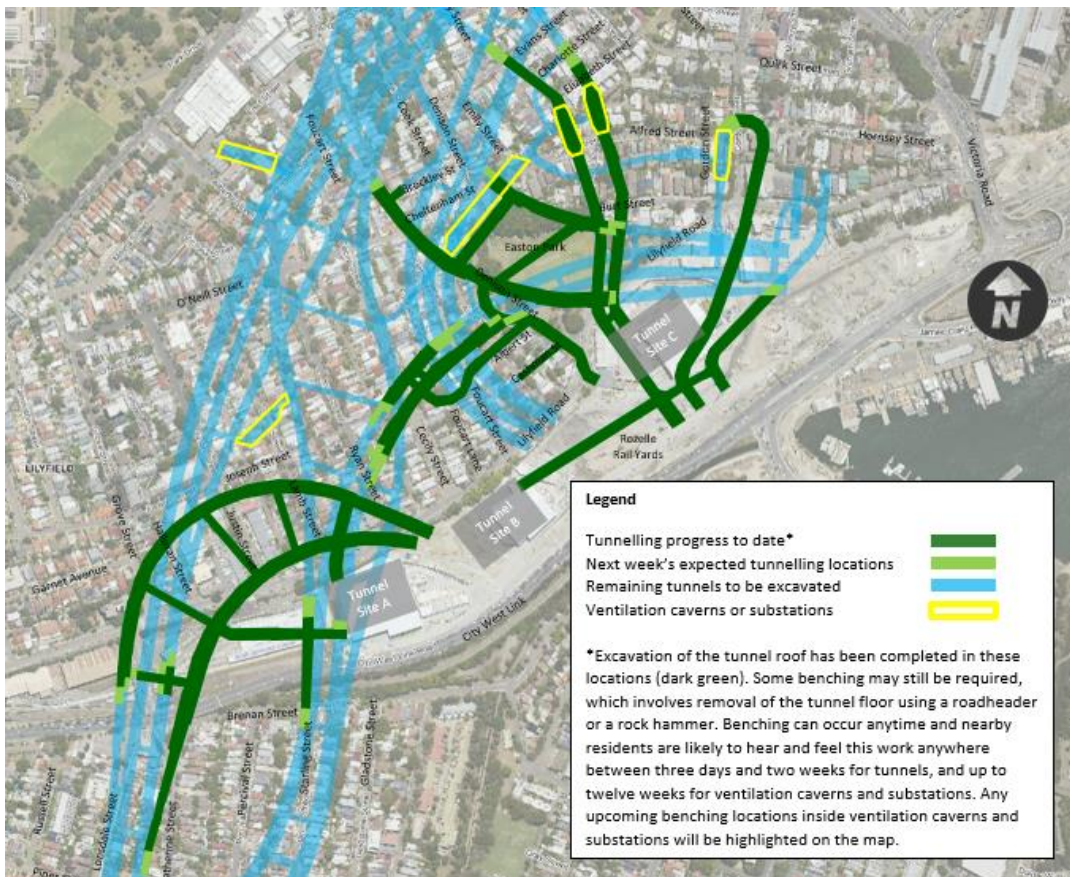
[Click here to enter the virtual Community Centre](#)



Tunnelling update

We currently have 21 roadheader machines excavating the future Rozelle Interchange tunnels. Next week's expected tunnelling locations are shown in the map below. For more information about the tunnel locations and depths, please visit the online Tunnel Tool [here](#).

This is a reminder that the project has approval to remove excavated material (called spoil), from inside the tunnels 24/7.



Progress shots

Photo below shows the water main being installed on Lilyfield Road



A moxy truck can be seen removing ground material from the tunnel face



Construction FAQs

For more information about standard construction rules, please click [here](#). This information includes:

- Hours of work
- Standard equipment used
- How we mitigate impacts to residents

How to contact us

In line with recent NSW Government health advice regarding COVID-19 and to ensure the safety of the community and staff, we have temporarily closed the Community Information Centre at 84 Lilyfield Road Rozelle.

Please note, you cannot respond directly to this email. If you want to know more about our work or to make a complaint, please email us at info@rozelleinterchange.com or contact the Rozelle Interchange Community Team on 1800 660 248.

Kind regards
Carla, Laura and Elle

The Community Relations Team