

Week starting 19 October 2020 (Update no. 188)

Good afternoon

Below is an overview of the Rozelle Interchange construction work happening across Rozelle, Lilyfield and Annandale next week. We've broken the update into the following sections:  
reminder of night work this week (Wednesday 14 and Thursday 15 October)

- night work next week
- three month night work lookahead
- Victoria Road Access Road opening late October
- tunnel progress update
- progress shots

We aim to include relevant information in these weekly updates highlighting work or activities that may impact you, so we encourage you to take time to read the below details. We continue to thank you for your patience while we carry out construction work in this area.

### [Reminder of night work this week \(Wednesday 14 & Thursday 15 October\)](#)

Night work this week will include (between 7pm and 6am):

- installing a new gas main on Victoria Road near Quirk Street (approximately one more week remaining after this week) and other utility services on The Crescent (ongoing). This work will continue to be noisy
- asphaltting on Victoria Road near Lilyfield Road (up to two more weeks work). We expect this work to be moderately noisy

### [Night work next week](#)

Next week noisy night work will be carried out on Thursday 22 October (7pm to 6am) and Saturday 24 October (7pm to 6am). We've highlighted the approximate locations of night work next week in the below map. Please note other activities such as traffic control setup may occur outside of the highlighted areas:

- mobilising/demobilising traffic control setup
- utility work (ongoing): trenching, locating existing services, installing conduits/pipes and traffic signal adjustments
- preparation to open Victoria Road Access Road: asphaltting, milling and re-sheeting, concrete barrier movements, traffic signal adjustments at the intersections, linemarking, linemarking removal and other general roadwork activities

- road construction (ongoing): demolition/installation of medians and barriers, asphaltting, milling and re-sheeting new road pavement, line-marking and line-marking removal and general roadworks
- backfilling and reinstatement of the work area.



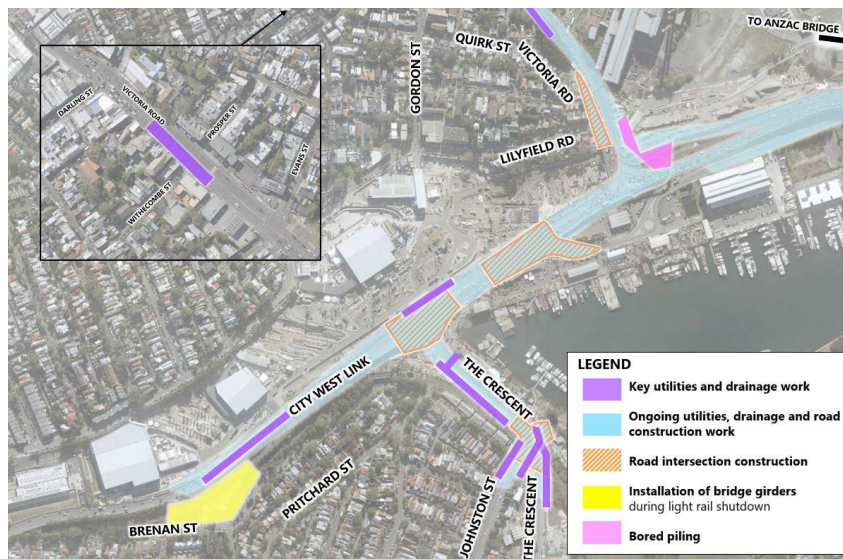
The above night time activities will involve the intermittent use of road saws, rock hammers, asphaltting machines, rattle guns and linemarking removal equipment. These activities particularly on Saturday night, are expected to create moderate to high noise that may be heard by nearby residents. Work is typically permitted to start on Victoria Road, City West Link and The Crescent from 10pm at night and every effort is made to complete the noisy activities as early as possible.

For information about how we manage noise from our work, please take a look at the [Construction Fact Sheet](#).

### Three-month night work lookahead

Night work is scheduled to continue for the duration of the project (late 2023) as we work to complete extensive upgrades to key arterial roads and intersections in the area. Whilst the project prefers to carry out work during the day when shifts are longer and workers are readily available, we're unable to do so when working on busy roads such as Victoria Road, City West Link or The Crescent. Due to the traffic volumes on these roads we must carry out work at night when volumes are lower and we can maintain safety for our workers and the public.

We've highlighted the key high noise activities scheduled to happen in the area over the next three months. Please note, this map is indicative only and intended to highlight new activities happening over the next quarter. For further information about our confirmed night work, please continue to refer to our weekly updates.



### Important changes to your route in October

The last round of pedestrian, cyclist and motorist changes for some time in Rozelle are scheduled to happen late October. The most significant change will be for motorists and will include:

- opening the Victoria Road Access Road (between The Crescent/City West Link and Victoria Road). This will be a major change. Drivers will need to take different lanes to access Victoria Road and the ANZAC Bridge. The changes are highlighted in the orange circles in the map below.



In order to provide you with clear and detailed information about these changes, please look out for a separate email next Monday titled 'Important changes to your route in October'



## What's happening inside the Rozelle Rail Yards site

From Wednesday 21 October for approximately one week, hammering work will be undertaken at the future air intake shaft inside the Rozelle Rail Yards opposite Easton Park (near Tunnel Site C). Unfortunately this work is expected to generate high noise and will be undertaken during day-time hours only: Monday to Friday 8am to 6pm with respite hours at 11am and 3pm, and Saturday 8am to 1pm with a respite hour at 11am. For further information regarding the construction of the air intake shaft at Tunnel Site C please click [here](#).

## Tunnelling update

We currently have 21 roadheader machines excavating the future Rozelle Interchange tunnels. Next week's expected tunnelling locations are shown in the map below. For more information about the tunnel locations and depths, please visit the online Tunnel Tool [here](#).

This is a reminder that the project has approval to remove excavated material 24/7 from inside the tunnels.

The below image shows one of our rockbolters currently getting serviced. This machine drills metal bolts into the wall of the tunnel (called rockbolts) used for additional ground support



The below image shows inside a tunnel during benching, where work is carried out to remove the tunnel floor



## Apply for a community grant

Eligible community groups can apply for a grant up to \$10,000 to deliver initiatives that provide long-term benefits to local communities. To view the guidelines and complete your application online visit [www.westconnex.com.au/community/community-grant-program](http://www.westconnex.com.au/community/community-grant-program)

WestConnex

Transurban

Submit your application from 12 October to 6 November 2020

## Progress shots

The below image shows the M8 Tunnel portals taking shape opposite from Ryan Street



The below aerial image shows the tunnel portals taking shape on Victoria Road before the Iron Cove Bridge. The new westbound traffic lanes will sit on top of this structure, due to be completed by Q1 2021.



### Courtesy notice - night work on Victoria Road at Gordon Street

Please be advised that a separate subcontractor (LTJV) working for Transport for NSW, will be carrying out night work on Victoria Road at Gordon Street over four shifts, to upgrade the pedestrian crossing including installing bicycle lights and widening some of the existing kerb ramps. This work has started and will continue until Friday 23 October (over four nights).

To limit the impact to residents, the subcontractor will work a maximum of two shifts per week and on the same nights that we're already scheduled to work. If you have questions or would like to make a complaint about this work, please call 1800 735 563 or [info@ltjv.com.au](mailto:info@ltjv.com.au)

### General construction FAQs

For more information on work hours, equipment used, and how we're mitigating impacts on Iron Cove residents please see [this document](#) at <https://bit.ly/2EMwKeA>.

### How to contact us

In line with recent NSW Government health advice regarding COVID-19 and to ensure the safety of the community and staff, we are re-closing the Community Information Centre at 84 Lilyfield Road Rozelle.

For any information you may require, please email us at [info@rozelleinterchange.com.au](mailto:info@rozelleinterchange.com.au) with your enquiry and a contact number for us to call you.

Please let us know if you have any suggestions or ideas regarding what you would like to see in this weekly update going forward. We welcome and appreciate your feedback.

Kind regards

Carla, Laura and Eleanor

**The Community Relations Team**