

Week starting 23 November 2020 (Update no. 208)

Good afternoon

Below is an overview of Rozelle Interchange construction work happening across Rozelle, Lilyfield and Annandale next week. We've broken the update into the following sections:

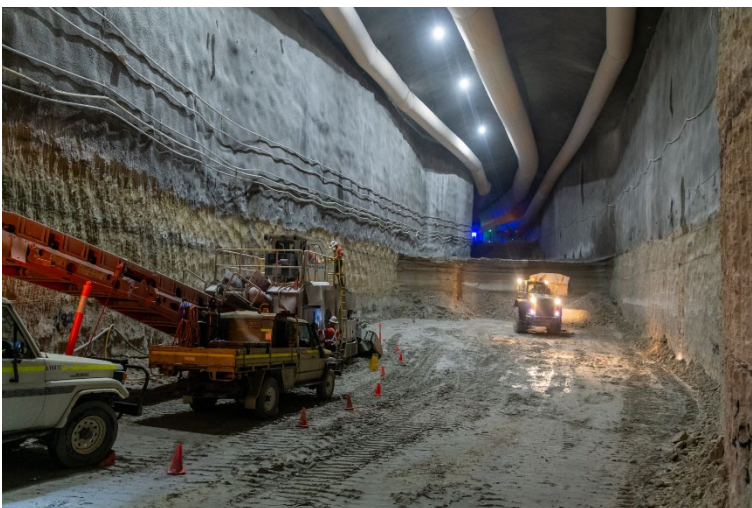
- progress shots
- reminder of night work this week
- night work next week
- tunnel progress update
- focus piece: what's happening at Iron Cove
- a reminder about the Rozelle Interchange Heritage and Salvage Distribution Plan: expressions of interest close tomorrow

We encourage you to take the time to read the below information as it involves construction work or traffic changes that may impact you.



Progress shots

We're changing the order of the update this week and are starting with some progress shots across our sites. Information about night work is found below. In December we'll be sending out a 2020 construction update highlighting the key activities completed this year and those upcoming next year.



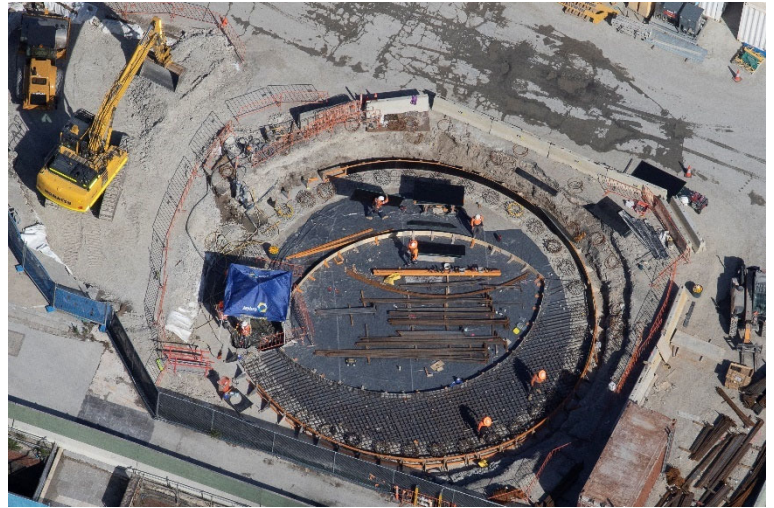
This image shows inside one of the substation caverns while we're 'benching'. Benching refers to the removal of the bottom part of the tunnel, or the tunnel floor, seen in the distance.

The roadheader machine is seen in the foreground being used to excavate the tunnels, currently parked up while ground material is being removed.

The white tubes seen running along the tunnel roof provide fresh ventilation to the tunnels during construction.

The image to the right shows one of two air intake shaft starting to be constructed inside the Rozelle Rail Yards, close to Lilyfield Road (opposite Easton Park). These shafts will draw fresh air into the ventilation system inside the operational tunnels.

The tunnel ventilation system will connect to the three ventilation stacks which will be built in the railyards near the City West Link/The Crescent intersection. These ventilation stacks will range in height between 32 and 42 metres and the design will be finalised during the Urban Design and Landscape Review process.



The aerial picture on the left shows the new temporary roads in operation around the Victoria Road/The Crescent intersection. Traffic has been moved onto these temporary roads so we can start to demolish and re-construct the Victoria Road bridge.

The temporary roads are due to be in place for approximately two years. We encourage you to travel slowly in this area as motorists are still getting used to these new roads.

 **Reminder: night work this week**

Noisy night work is scheduled to happen tomorrow Thursday 19 November weather permitting. Work will begin at 7pm and finish at 6am and will involve utility and general road work. We'll be working on Victoria Road and The Crescent and the work will involve barrier demolition and trenching work using rock hammers and road saws.



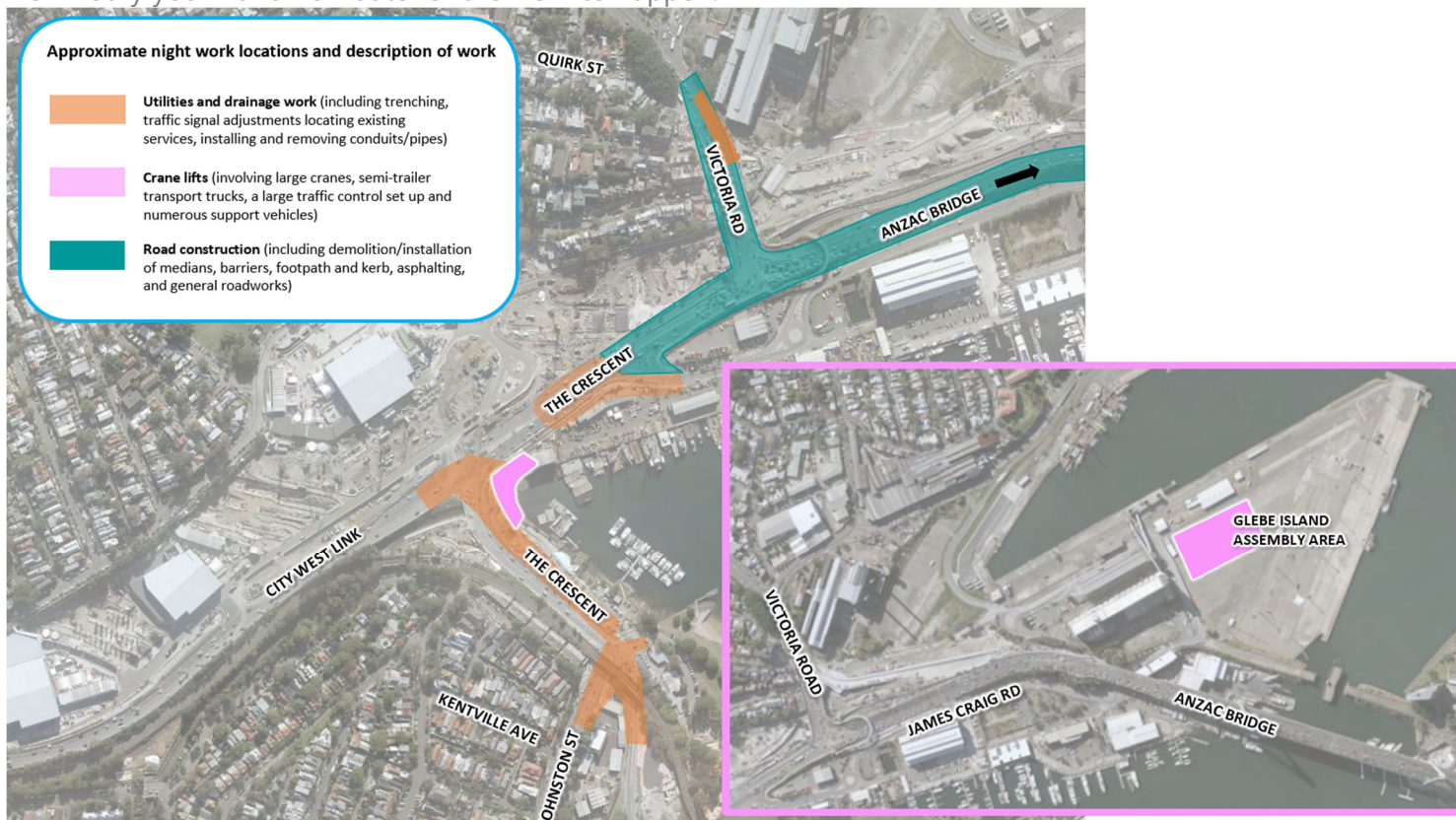
Night work next week

Next week noisy night work will be carried out on **Monday 23 November (7pm to 6am)**. We've highlighted the approximate locations of night work next week in the map below. Please note, that other activities which are non-intrusive (below a certain noise level) such as oversized deliveries, adjusting barriers and fencing and traffic control setup may occur outside of the highlighted areas:

- mobilising/demobilising traffic control setup
- **crane lifts** to install five sections of the new Whites Creek Bridge within our site on The Crescent: the bridge sections will be lifted onto transport trucks at our Glebe Island Assembly Area with a large crane and transported to The Crescent East site where a second large crane will lift them into place.
- **utility and drainage work (ongoing):** trenching, locating existing services, installing and removing conduits/pipes and traffic signal adjustments
- **road construction (ongoing):** demolition/installation of medians, barriers, footpath and kerb, asphaltting, milling and re-sheeting new road pavement, line-marking and line-marking removal and general roadworks
- backfilling and reinstatement of the work area.



Please note, this work is weather dependent and may need to be rescheduled. If work is postponed, we'll notify you with a new date for the work to happen.



The above night time activities will involve the intermittent use of road saws, rock hammers, asphaltting machines, rattle guns and linemarking removal equipment. These activities are expected to create **moderate to high noise that may be heard by nearby residents**. You may also notice large traffic control set ups and the presence of additional support vehicles and personnel on Monday night as we carry out adjustments to lane configurations and install bridge sections.

Work on Victoria Road, City West Link and The Crescent is typically permitted to start from 10pm at night and every effort is made to complete the noisy activities as early as possible. Work in other locations, including the Glebe Island Assembly Area is permitted to start earlier at 6pm.

For information about how we manage noise from our work, please take a look at the [Construction Fact Sheet](#).



Tunnelling update

Excavation of the future Rozelle Interchange tunnels is progressing with 22 roadheaders in operation. Next week's expected tunnelling locations in Rozelle and Lilyfield are shown in the map on the right.

For more information about the tunnel locations and depths, please visit the online Tunnel Tool [here](#).

Trenching inside some tunnels

We'll continue to dig stormwater drainage trenches inside some of the already excavated tunnels; upcoming trenching locations are shown with an **orange dashed line** on the map on the right.

To dig the trenches we use large saws and excavators with hammer attachments, which will generate some noise, particularly when we're working directly beneath properties. Trenching work is undertaken during standard construction hours only:

- Monday to Friday 7am to 6pm
- Saturday 8am to 6pm

Following trenching work, we'll start to build the road inside the traffic tunnels. Road work can generate some noise but is not expected to be as noisy as trenching work.



Please note that other tunnelling activities (such as roadheader excavation) will continue to occur 24/7.



An update from Iron Cove

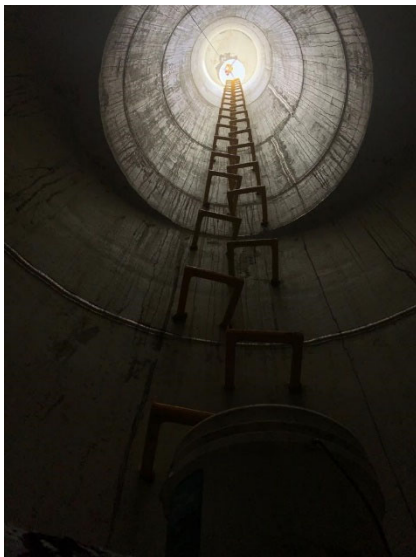
Building new westbound lanes on Victoria Road

We're halfway through completion of the new Victoria Road westbound traffic lanes between Springside and Byrnes streets.

We're also building a new cul-de-sac at the Victoria Road end of Clubb Street which will connect to the new shared path on Victoria Road.



The new traffic lanes and shared path on Victoria road are expected to open in early 2021, before construction moves to the middle lanes on Victoria Road to build the tunnel entry and exit portals.



Balmain sewer relocation work

We're progressing with work to relocate the Balmain slope sewer which currently services Rozelle, Lilyfield and Balmain. This work is scheduled for completion in Q1-2021 and involves underground micro-tunnelling to create a new sewer line as well as building of new manholes from the road surface for future servicing by Sydney Water. To date we've bored approximately 410 metres of new sewer out of 628 metres required for completion.

The image to the left shows the completed manhole recently built on Moodie Street adjacent to Victoria Road at approximately 13 metres deep and 1.8 metres wide.

Tunnelling

In October the Project's final roadheader was assembled inside our site adjacent to Byrnes Street and tunnelling started from within our sites between Callan and Toelle streets.

Tunnelling at Iron Cove is expected to take up to one year to complete.





Rozelle Interchange Heritage Salvage Items - Expressions of interest close tomorrow

The Project's Heritage and Salvage Distribution process has been underway for a couple of weeks now and we wanted to remind you that expressions of interest will close at 9am tomorrow.

These heritage items salvaged from acquired properties along Victoria Road, Rozelle will be distributed at no cost and we invite you to view the catalogue of items available (click [here](#) or go to rozelleinterchange.com.au/salvage) and submit an Expression of Interest for any item/s you would like to claim.

Items will be distributed in accordance with the Project's Heritage and Salvage Distribution Plan. You can find more information by viewing our [FAQs](#). If you have any further questions, you can email us at salvage@rozelleinterchange.com.au.

We continue to thank you for your patience while we carry out construction work in this area. We're pleased to advise that we'll be stopping construction work over the Christmas break between Saturday 19 December and Sunday 3 January 2021. While some low impact activities may still happen during this period such as security checks or minor maintenance checks, we hope this break provides residents with much needed respite from the work.

If you want to know more about our work or to make a complaint, please contact us on our contact details found above.

Kind regards

The Community Relations Team



Construction FAQ's

For more information about standard construction rules, please click [here](#). This information includes:

- Hours of work
- Standard equipment used
- How we mitigate impacts to residents



How to contact us

In line with recent NSW Government health advice regarding COVID-19 and to ensure the safety of the community and staff, we have temporarily closed the Community Information Centre at 84 Lilyfield Road Rozelle.

P: 1800 660 248

E: info@rozelleinterchange.com.au