

Monday 24 August to Saturday 29 August

Good morning

Below is a summary of Rozelle Interchange construction work taking place at Iron Cove next week. Residents impacted by our work on local streets will be provided a more detailed update in the coming days.

Night work

Night work will be carried out along Victoria Road on Monday 24 August, Tuesday 25 August and Thursday 27 August (contingency night in cases of wet weather or adverse site conditions is Wednesday 26 August) between the hours of 7pm and 6am, weather permitting. Work will include:

- mobilising/demobilising traffic control setup each night
- **new activity - traffic signal conduit installation** (involving trenching) at the corner of Victoria Road and Terry Street (approximately one week of work)
- **new activity - investigation work** (involving pothole drilling) on Victoria Road and Terry Street (approximately two weeks of work)
- **line marking** to delineate new traffic lanes on Victoria Road and Callan Street
- **trench excavation** to install new stormwater drainage on Victoria Road, in the median and eastbound lanes between Byrnes St and Callan streets (7th week of 15 weeks work)
- **trench excavation** to install new Ausgrid assets in Victoria Road between Springside and Moodie streets (7th week 11 weeks work)
- backfilling and reinstatement of the trenching area each night



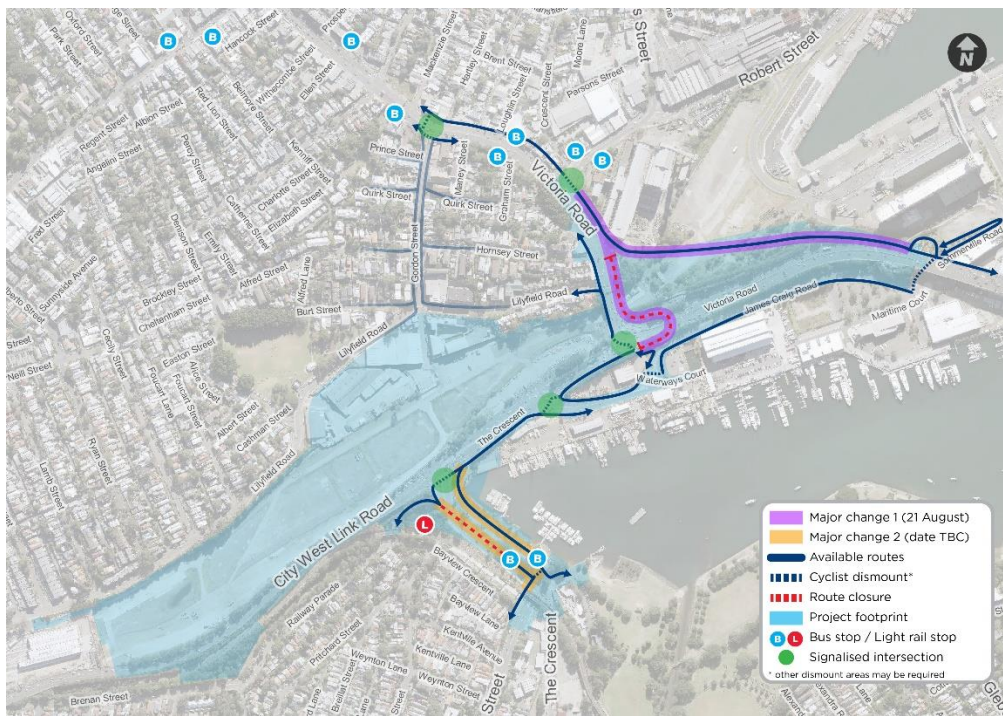
Trench excavation, road sawing and rock hammering are loud activities, and may be required on each of these nights. As a result, night work next week is expected to generate high levels of noise.

Key updates

In August, September and October, there will be some key changes to your commute in Rozelle and Annandale whether you're a pedestrian, cyclist or motorist. These changes are further detailed in this notification: [Important changes to your route from Friday 21 August \(No154\)](#). This notification can also be viewed on the Rozelle Interchange website at <https://rb.gy/vyublF>

From Friday 21 August there will be two key changes to pedestrian and cyclist connectivity in Rozelle:

1. a new pedestrian and cyclist shared path will open between Victoria Road and ANZAC Bridge. Pedestrians and cyclists will have direct access to and from ANZAC Bridge from the Balmain side of Victoria Road (south of Robert Street).
2. The Beatrice Bush Bridge (horseshoe bridge over City West Link) will be **permanently closed**, and the structure removed in stages in the weeks following. The bridge will not be replaced. To cross City West Link, you will need to travel to the Gordon Street intersection and travel down the Lilyfield side of Victoria Road.



The Urban Design and Landscape Plan is now on public exhibition



The Urban Design and Landscape Plan (UDLP) is now open for viewing and formal submissions through our interactive portal which includes a virtual Community Centre. You can view the full plan, access the interactive map, read through the Community Guide, watch a virtual information session, register your feedback and more.

The UDLP outlines how open and green space for the community will be developed upon completion of the Rozelle Interchange Project. A key feature of the UDLP includes transformation of the Rozelle Rail Yards into an open green space of up to 10 hectares, similar in size to Victoria Park near Sydney University. This former inaccessible industrial land will become a community park, leaving a positive legacy for generations of residents.

[Click here to enter the virtual Community Centre](#)



or visit <https://rb.gy/nebk4r>

Traffic changes on local streets

Next week we'll continue trenching for the new sewer line on Yara Avenue. This work requires Yara Avenue to be closed to non-residents. Resident access to all buildings will be maintained (please display your Resident Access Card for efficient access to Yara Avenue).

Inside our site

It's likely that you've recently heard some high noise coming from inside the site as we work to build the new tunnel portals and widen/realign the westbound lanes on Victoria Road carriageway between Springside and Byrnes streets.

Both of these activities require us to excavate bulk earth material including a lot of rock which has been found close to the surface. In order to do this we're currently saw cutting and rock hammering, moving excavated ground and compacting/levelling work inside the site.

The map below shows location of rock hammering and excavation works where we are building the new road level and tunnel structures.



General construction FAQs

For more information on work hours, equipment used, and how we're mitigating impacts on Iron Cove residents please see [this document](#) at <https://rb.gy/ulhez1>.

How to contact us

In line with recent NSW Government health advice regarding COVID-19 and to ensure the safety of the community and staff, we are re-closing the Community Information Centre at 84 Lilyfield Road Rozelle.

For any information you may require, please email us at info@rozelleinterchange.com.au with your enquiry and a contact number for us to call you.

If you want to know more about our work or to make a complaint, please respond to this email or contact the Rozelle Interchange Community Team on 1800 660 248.

Please let us know if you have any suggestions or ideas regarding what you would like to see in this weekly update going forward. We welcome and appreciate your feedback.

Kind regards

Pam and Bec

The Iron Cove Community Relations Team