

# Rozelle Interchange

## WestConnex

### Changes to connectivity – Iron Cove factsheet | March 2020

As part of the Rozelle Interchange Project, the current westbound traffic lanes on Victoria Road (east of the Iron Cove Bridge) will be realigned to accommodate tunnel entry and exit ramps. This will involve changes to current road, pedestrian and cyclist connectivity over the next four years.



Aerial of Iron Cove

#### Road closures, bus stop relocations, cyclist and pedestrian detours

From **7 April** there will be three key changes to connectivity in Iron Cove:

- Clubb Street will be permanently closed at Victoria Road. This will mean no access to or from Victoria Road via Clubb Street for motorists and pedestrians
- the Terry Street signalised pedestrian crossing will be closed for up to three years (see ① on map)
- an additional eastbound bus stop will also be opened to limit extra travel time (see ② on map)
- westbound Victoria Road shared path will be closed between Springside and Toelle streets for up to 18 months.

A temporary closure of Callan Street at Victoria Road was implemented on **23 March** and will remain until **the end of April**.

Other changes from **21 April**:

- Callan Street will open and Toelle Street will be temporarily closed at Victoria Road for up to 12 months. Once Toelle Street is reopened, Callan Street will close again for up to five months
- the remaining westbound Victoria Road shared path from Toelle Street to Byrnes Street will be closed for up to 18 months. A temporary path will be available behind the construction site for pedestrians
- The westbound bus stop near Toelle Street (ID 203925) will be relocated further west just before the Iron Cove Bridge (see ③ on map).

#### Key Information

Upcoming changes to connectivity from **7 April 2020** with additional changes from **21 April 2020**.

#### For more information

**1800 660 248**

[info@rozelleinterchange.com.au](mailto:info@rozelleinterchange.com.au)

[westconnex.com.au](http://westconnex.com.au)

We are following the NSW Health 'Social distancing' guidelines and the **Community Information Centre is closed until further notice**.

#### We speak your language



Visit [westconnex.com.au](http://westconnex.com.au)

Need an interpreter?

Call the Translating and

Interpreting Service on **131 450**.

We understand that this will be a significant change for pedestrians, cyclists and motorists so we have provided further details over the page about alternate routes and other work impacting connectivity in the area.



Australian Government

**BUILDING OUR FUTURE**



Constructed by

**JOHN  
HOLLAND**



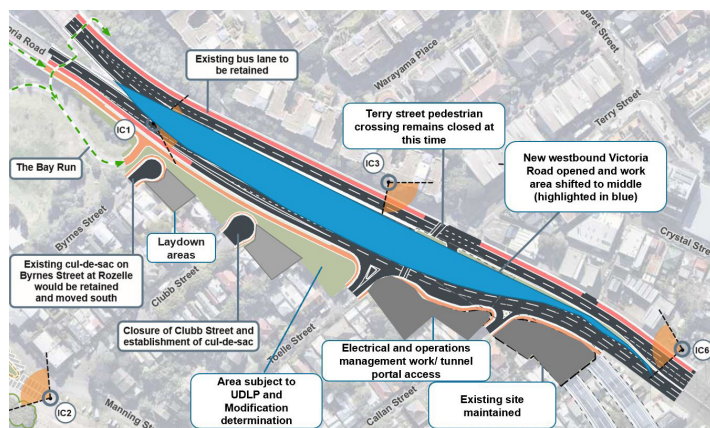
## Why are these changes happening?

The Iron Cove Link tunnel entry and exit portals will be positioned in the current westbound Victoria Road traffic lanes (adjacent to Toelle Street). This means the existing westbound traffic lanes will be moved south and realigned to accommodate the portals (see diagram below).

To reduce disruption to traffic flow on Victoria Road, the new westbound traffic lanes will be built first (where the current Iron Cove construction site is located) and opened to motorists. This is expected to take 18 months.

A new shared path will be built along the new westbound traffic lanes and will be opened at the same time as the new traffic lanes (mid-2021).

Once the new westbound lanes are open we will close the existing westbound lanes and commence excavation and construction of the tunnel entry and exit portals and connecting roads (see image below).



Excerpt taken from 2017 M4-M5 Link Environmental Impact Statement which shows new westbound traffic lanes open. New work areas highlighted in blue.

## How will I cross Victoria Road?

During construction, to cross Victoria Road, you can use either:

- the existing signalised intersection at Wellington Street. This will provide access to existing eastbound and westbound buses
- the existing pathway beneath the Iron Cove Bridge. This will provide access to nearby relocated westbound and additional eastbound bus stops.

The relocated westbound bus stop on Victoria Road will remain at this location (adjacent to Byrnes Street) until mid-2021. It will then be moved back to its new permanent position between Springside and Callan streets.

On project completion the Terry Street signalised crossing will be reinstated and will be positioned above the tunnel entry and exit ramps, with a slightly different configuration. The additional eastbound bus stop will remain operational until this time.

## Were other options to cross Victoria Road considered?

Yes, however there is no other safe alternative that can be provided for pedestrians whilst we are constructing the new westbound lanes and tunnel portals.

We've done everything we reasonably and feasibly can to ensure that this crossing was not removed until it was absolutely necessary to do so. We've also ensured that there are bus stops near to the two alternate crossings to limit extra travel time.

## How will I get to/from my street?



Either Toelle or Callan street will be open for resident access to/from Victoria Road. Manning Street will remain open at all times to get to Darling Street.



A temporary pathway for pedestrians will be available behind our Iron Cove construction site between Callan and Byrnes streets.



Cyclists travelling west can connect to the Iron Cove Bridge and the Bay Run via Manning Street. There will be no impact to existing eastbound routes.

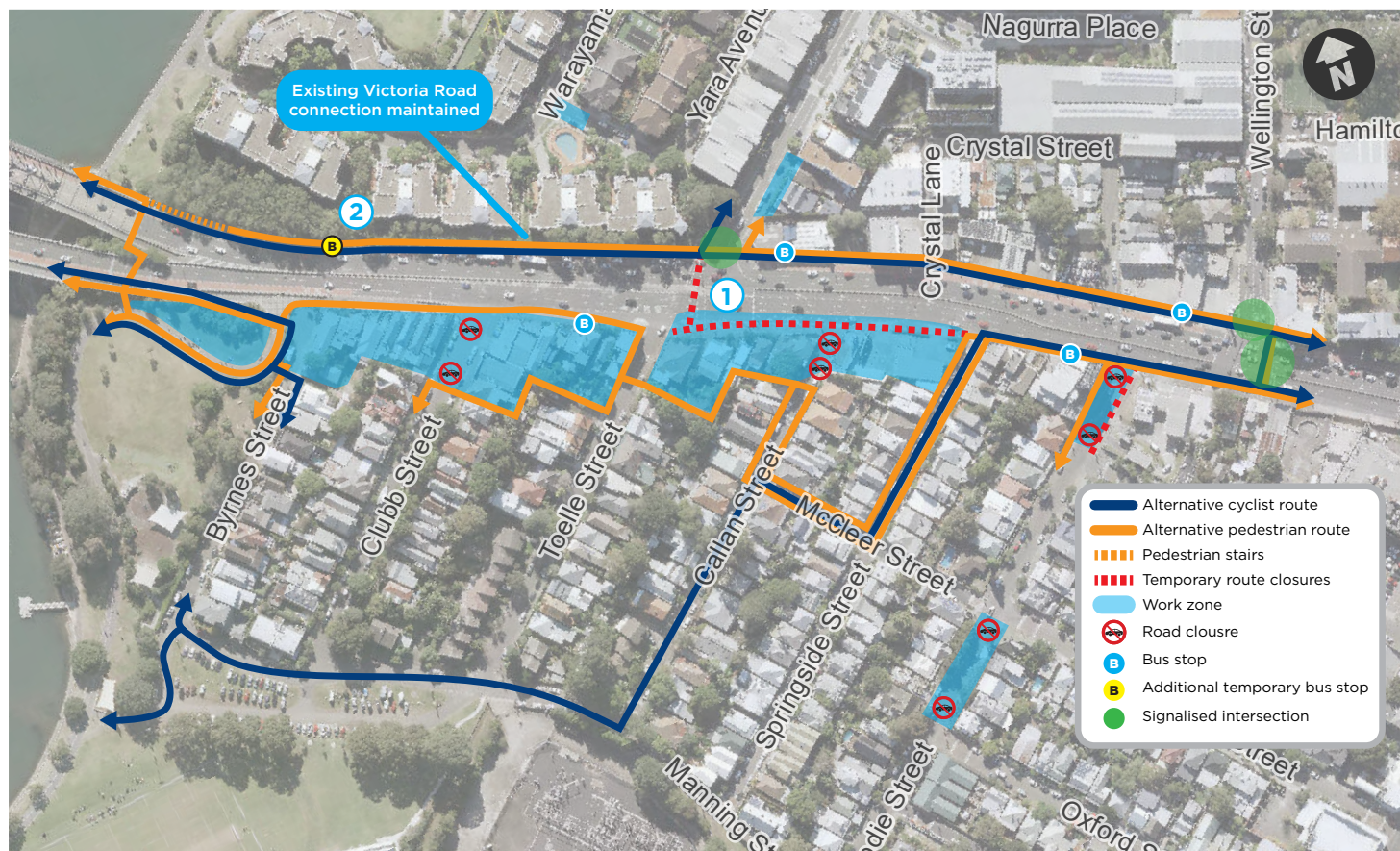
## Further road closures

As previously informed, other road closures and detours are required for the Balmain sewer relocation work. Some of these changes have already been implemented and include:

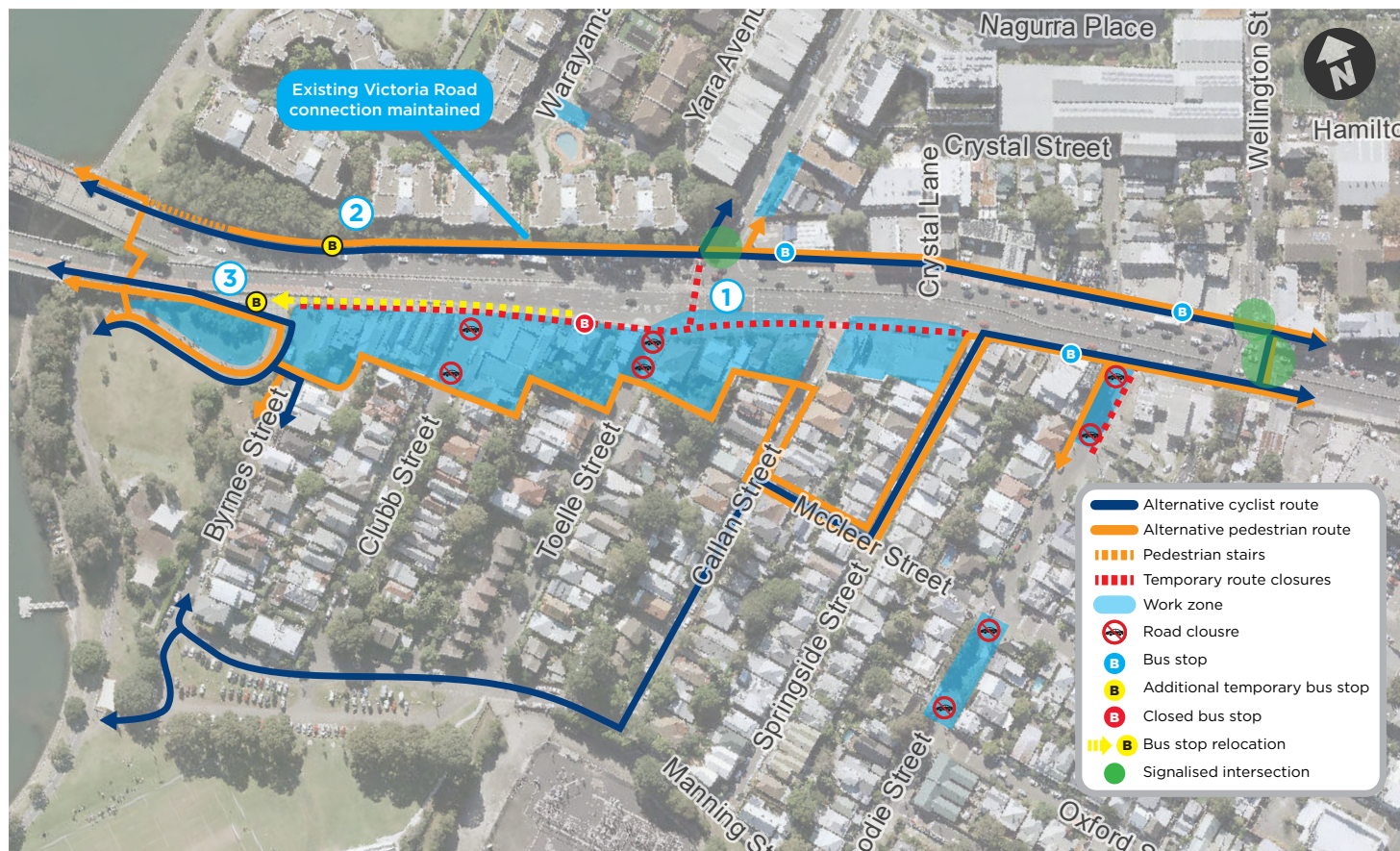
- temporary closure of Moodie Street between Waterloo Street and Victoria Road and eastern path for up to six months
- temporary closure of Moodie Street between McCleer and Cambridge streets and western footpath for up to three months
- temporary closure of Terry Street outbound traffic lanes and footpath for eight months (expected closure early April)
- temporary closure of Yara Avenue for up to five months.



## Iron Cove pedestrian and cyclist changes from 7 April



## Iron Cove pedestrian and cyclist changes from 21 April





## Additional heavy vehicle movements on local roads



Sections of the new westbound traffic lanes will not be level with the existing Victoria Road. This means we'll need to close access to/from Victoria Road in these sections while we're working.

In order to get our construction vehicles to/from the site we'll need to enter via the local roads. This will result in an increase of heavy vehicles using Byrnes, Clubb, Toelle, Callan and Springside streets.

We are currently developing a factsheet which details our approved truck routes and types of trucks we can use on different roads. This will be released in the coming weeks.

## Other upcoming changes

Over the coming months other short-term road closures will be required in the area for utility works which include the Balmain sewer relocation. This work needs to take place concurrently to ensure all utilities are relocated and reconnected prior to works commencing along the existing Victoria Road.

**We thank you for your patience as we understand the impacts of these multiple disruptions.**

Please follow signs and allow extra time for your journey. Further changes to connectivity will be detailed in our monthly notifications.



## When will work happen?

Work will mostly take place during our standard construction hours:

- **7am to 6pm** Monday to Friday
- **8am and 6pm** on Saturdays

Night work is scheduled between:

- **6pm and 7am** on notified nights

Night work activities will be noisy and will be scheduled in our monthly Iron Cove night work calendar. Generally, tunnel portal construction work will be undertaken during the day.

Equipment required for work will include: road resurfacing plant and equipment including concrete pavers, rollers and compacting equipment, excavators, mobile cranes, piling rigs, rock hammers, concrete trucks and concrete saws.



Above and below: artist impressions of view from Iron Cove Bridge approximately five years after completion.

