

Rozelle Interchange

WestConnex

Work Update, Lilyfield, Rozelle and Annandale N0143

05 August 2020

05 August 2020 (Update no. 143)

Good afternoon

Below is an overview of Rozelle Interchange construction work happening across Lilyfield, Rozelle and Annandale next week. This is a longer update than usual including some the following important information:

- night work next week
- night work summary for the next 3 months
- important changes to your route in Rozelle and Annandale
- tunnel progress in August
- general construction FAQs

Please let us know if there is a topic you would like covered in future updates.

Please note, night work this **Friday 7 August has been cancelled** due to the expected wet weather.

Night work next week

Noisy night work will be carried out on **Monday 10 August, Tuesday 11 August and Thursday 13 August** between the hours of **7pm and 6am** (weather permitting).

If work cannot be undertaken on these nights, a contingency night may be used on either Wednesday 12 August or Friday 14 August. We'll advise you via email if a contingency night is required.

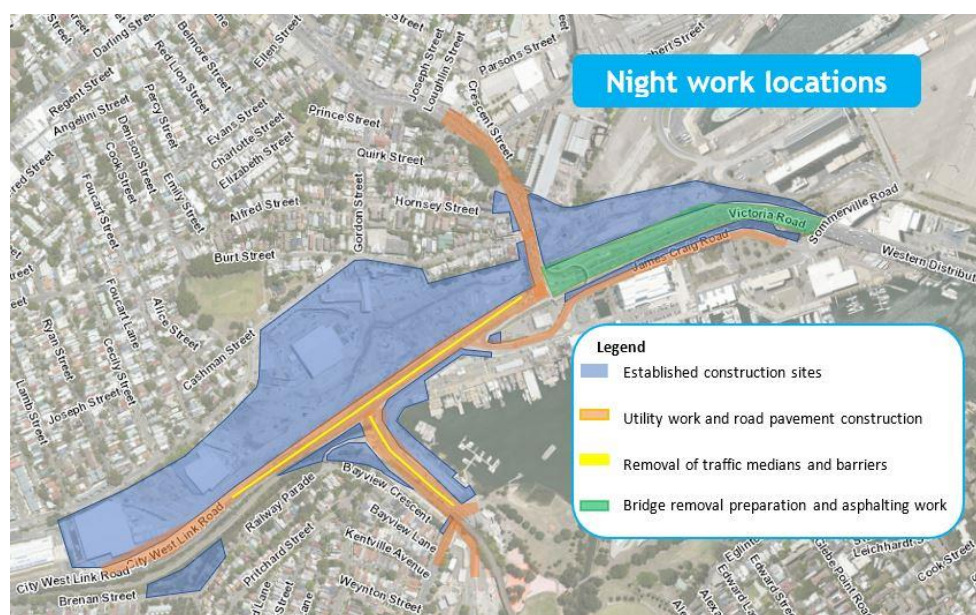
If required, we'll notify you of other changes to the August night work calendar in these weekly updates.

August planned night work calendar						
Monday	Tuesday	Wednesday	Thursday	Friday	Saturday	Sunday
					1	2
3	4	5	6	7	8	9
10	11	12	13	14	15	16
17	18	19	20	21	22	23
24	25	26	27	28	29	30
31	September					
	1	2	3	4	5	6

Night work next week will include:

- mobilising/demobilising traffic control setup each night
- removal, relocation and installation of **traffic medians and barriers** (involving concrete sawing and hammering)
- **utility work** including: potholing, utility installation/adjustment work (power, water, sewer, communications and gas), connection work, maintenance work and adjustments to traffic control signals in preparation for upcoming traffic changes, involving trenching to access the utility (rock hammering and saw cutting), cutting and welding of pipes and vacuuming to identify utilities
- **road pavement construction** (involving road sawing, rock hammering, concrete work, asphaltting, line marking and the use of a milling machine to remove the top layers of the road surface)
- preparation work for the **closure of Beatrice Bush Bridge** involving removing some handrails and pavement and installing anchors
- backfilling and reinstatement of the work area each night.

High noise activities such as barrier demolition, asphaltting, road sawing and rock hammering may be required on each of these nights at the locations shown below. As a result, night work next week is expected to generate high levels of noise.



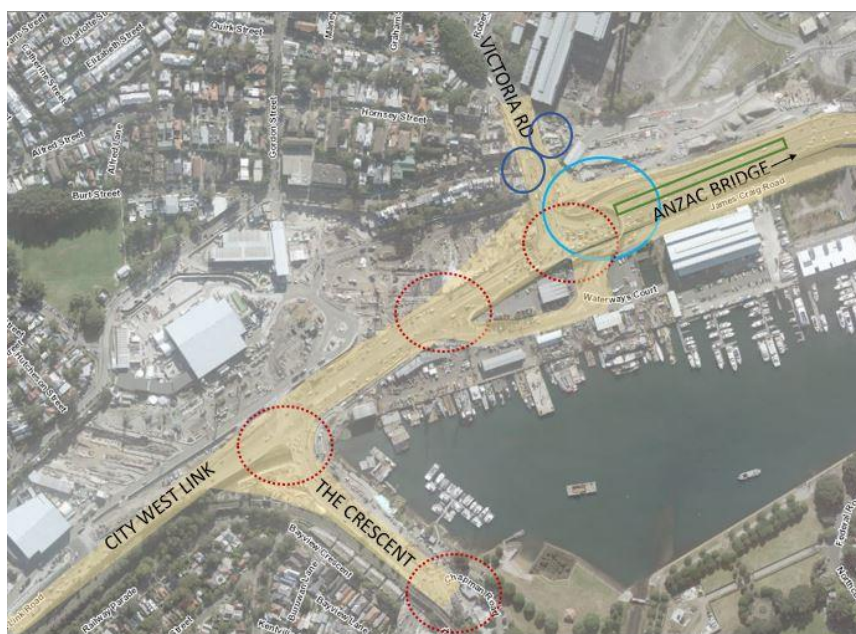
Next three months - key night work activities

Night work will continue over the next three months as we change the configuration of major intersections on Victoria Road, City West Link and The Crescent. In addition to the above, other key night work activities happening over the next quarter include:

- **removal of Beatrice Bush Bridge** (horseshoe bridge) in stages over multiple weekends. Extensive temporary traffic setups will be required to facilitate the removal of the bridge components using multiple cranes.
- **implementing multiple 'traffic switches'** in order to change the lane configuration at The Crescent/City West Link intersection, and The Crescent/Victoria Road intersections.
- **demolishing median islands** along City West Link and Victoria Road (towards ANZAC Bridge) including asphaltting work
- **asphaltting** work at the new intersections and tie-in points between new temporary roads and permanent roads.

Night work over the next three months will unfortunately **continue to generate high noise**. The traffic setups required to facilitate these key activities will involve temporary lighting, reversing vehicles and a high number of personnel and support vehicles to be present. In addition, rock hammering, saw cutting, welding, asphaltting and milling will be required throughout, all of which generate distinctively high noise.

The map below shows the general night work locations and associated activities over the next three months. Further details about the specific construction work required for these activities will be provided in emails, ahead of the work happening.



Legend – general locations for night work over next three months

- Removal of Beatrice Bush Bridge and supporting structures involving piling
- - - Traffic switch (changing configuration of intersection)
- Asphaltting work
- Barrier demolition
- Ongoing night work locations

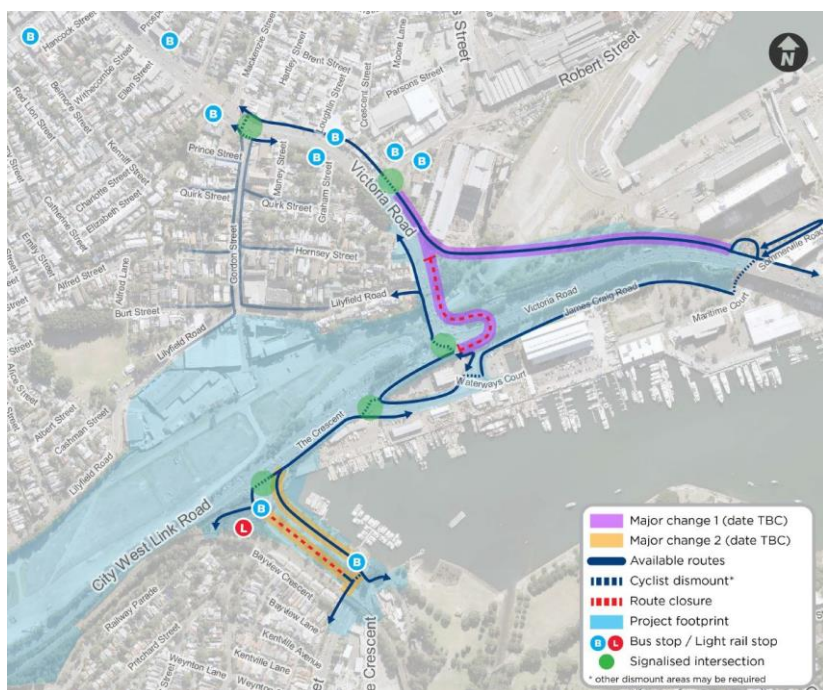
Important changes to your route in Rozelle and Annandale

There will also be some key traffic changes for pedestrians and cyclists in August and September. More information about these changes will be sent as details are confirmed so please look out for emails titled [Important changes to your route](#) sent over the coming weeks.

The first changes to occur involves:

- Opening of a pedestrian and cycle path linking Victoria Road with ANZAC Bridge. At the same time, the Beatrice Bush Bridge (horseshoe bridge) over Victoria Road will close. We'll communicate the dates for these changes when they are confirmed.
- A new pedestrian and cycle path will open next to Rozelle Bay on The Crescent between City West Link and Johnston Street. The existing path next to the mural, will close. Again, a date to be confirmed.

Further information about each of these changes will be sent in the coming days as dates are confirmed. Please look out for emails titled [Important changes to your route](#). The below map shows these two key changes.



Other Key updates

- A **full road closure** has been implemented **on Quirk Street at Victoria Road**. In addition to this, the left-turn from Victoria Road into Maney Street has been closed. Local motorists are encouraged to use Evans or Darling streets as an alternative. These closures will be in place until approximately October this year.
- The speed limit on The Crescent between Johnston Street and City West Link, has reduced to 40km/hr. This speed reduction will allow construction activities located close to The Crescent, to be carried out safely during the daytime
- **Ground monitoring equipment** will be installed at the following general locations below next week during standard construction hours 7am to 6pm Monday to Friday and 8am to 6pm on Saturdays:
 - Justin Street between O'Neill and Joseph streets
 - Brenan Street between Catherine Street and Railway Parade

To find out more information on ground monitoring or what's required to install the equipment please click [here](#).

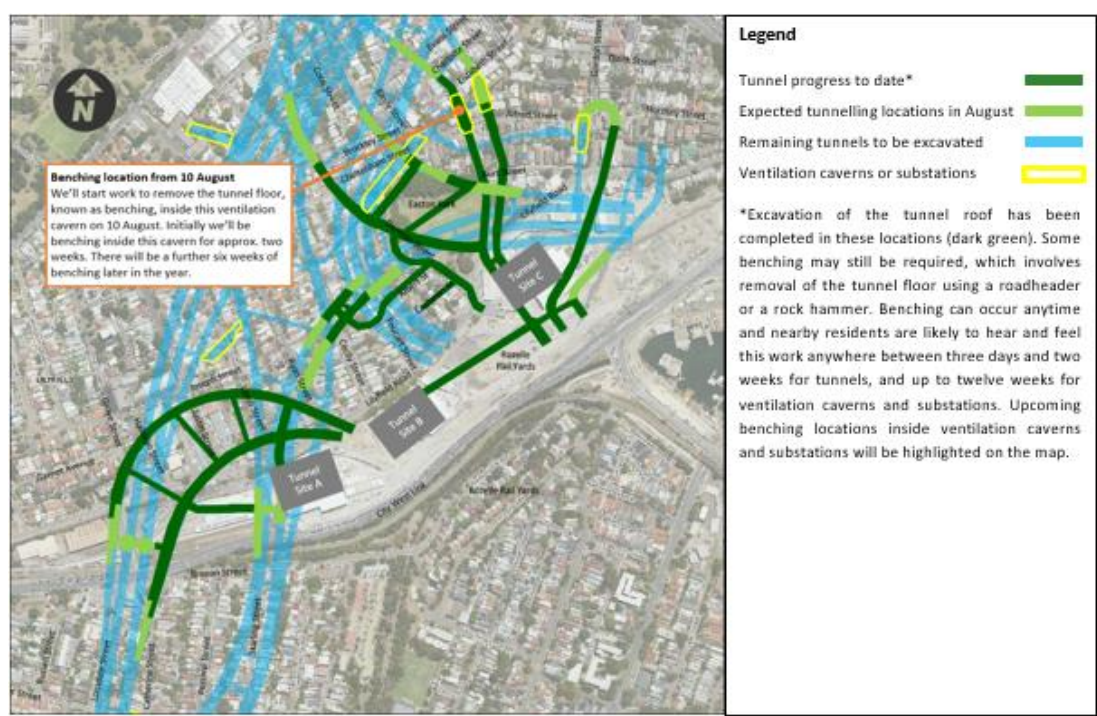
Tunnelling update

We currently have 16 roadheader machines excavating the future Rozelle Interchange tunnels. The expected tunnelling locations in August are shown in the map below. For more information about the tunnel locations and depths, please visit the online Tunnel Tool [here](#).

Courtesy notice: benching under Alfred and Elizabeth streets

On Monday 10 August we'll start work to remove the tunnel floor inside one of the ventilation caverns under Alfred and Elizabeth streets, as shown in orange on the map below. This activity is known as benching. Due to the height inside the cavern (21.5 metres), we expect to be benching in this location for eight weeks in total; approximately two weeks from Monday 10 August and another six weeks later in the year. Noise and vibration impacts from benching will be similar to previous tunnelling activities in the area.

Please note benching inside traffic tunnels, ventilation tunnels and cross passages can occur anytime after excavation of the tunnel roof has been completed. Benchng inside these types of tunnels can take anywhere between three days and two weeks. Unfortunately it is hard for us to provide a timeframe for benching inside these tunnels as it can occur anytime a roadheader or rockhammer is available.



Progress shots



Picture shows the supporting foundations taking shape to the future entrance/exit of the M8 tunnels. The roof will be placed on top of these structures towards the end of the year.



Photo of the cutting end of the roadheader. The 'teeth' gradually cut into the rock in a circular motion and as a result, need to be frequently replaced!

Construction FAQs

For more information about standard construction rules, please click [here](#). This information includes:

- Hours of work
- Standard equipment used
- How we mitigate impacts to residents

How to contact us

In line with recent NSW Government health advice regarding COVID-19 and to ensure the safety of the community and staff, we are re-closing the Community Information Centre at 84 Lilyfield Road Rozelle. For any information you may require, please email us at info@rozelleinterchange.com.au with your enquiry and a contact number for us to call you.

If you want to know more about our work or to make a complaint, please **respond to this email** or contact the Rozelle Interchange Community Team on **1800 660 248**.

Kind regards
Carla, Laura and Elle

The Community Relations Team