

Week starting 9 November 2020 (Update no. 199)

Good afternoon

Below is an overview of Rozelle Interchange construction work happening across Rozelle, Lilyfield and Annandale next week. We've broken the update into the following sections:

- night work next week
- tunnel progress update
- changes to pedestrian and cycle routes from Wednesday 11 November
- approval of Modification 2 - The Crescent overpass and active transport links connecting Rozelle, Annandale and Lilyfield
- progress shots

We'll be changing the content of these updates each week so that they remain relevant for nearby residents. We encourage you to take the time to read the below information as it involves construction work or traffic changes that may impact you.

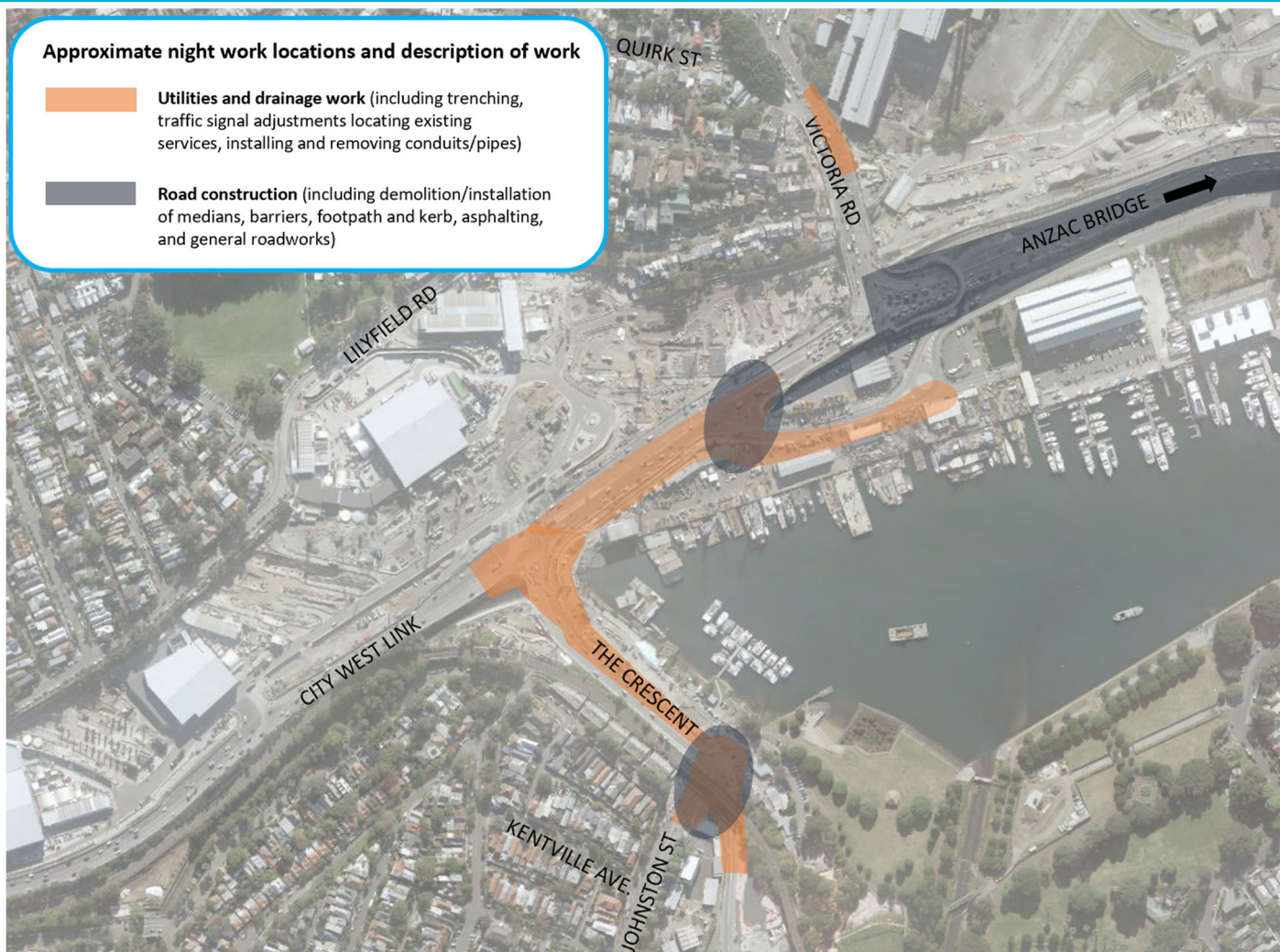
We continue to thank you for your patience while we carry out construction work in this area.



### Night work next week

Next week noisy night work will be carried out on **Monday 9, Tuesday 10 and Thursday 12 November (7pm to 6am)**. We've highlighted the approximate locations of night work next week in the map overleaf. Please note, other activities such as oversized deliveries and traffic control setup may occur outside of the highlighted areas:

- mobilising/demobilising traffic control setup
- **utility and drainage work (ongoing)**: trenching, locating existing services, installing and removing conduits/pipes and traffic signal adjustments
- **road construction (ongoing)**: demolition/installation of medians, barriers, footpath and kerb, asphaltting, milling and re-sheeting new road pavement, line-marking and line-marking removal and general roadworks
- backfilling and reinstatement of the work area.



The above night time activities will involve the intermittent use of road saws, rock hammers, asphaltting machines, rattle guns and linemarking removal equipment. These activities are expected to create **moderate to high noise that may be heard by nearby residents**. Work is typically permitted to start on Victoria Road, City West Link and The Crescent from 10pm at night and every effort is made to complete the noisy activities as early as possible.

For information about how we manage noise from our work, please take a look at the [Construction Fact Sheet](#).



### Tunnelling update

We currently have 22 roadheaders excavating the future Rozelle Interchange tunnels. The material we excavate during tunnelling (called spoil) is taken from the tunnel face, up the access ramps and into the large acoustic sheds inside the Rozelle Rail Yards via specialised dump trucks called moxies. Inside the sheds, spoil is stockpiled before being loaded into trucks with trailers and taken to tip sites all over Sydney. We recently reached the milestone of 2 million tonnes of spoil removed from the Project.

Next week's expected tunnelling locations in Rozelle and Lilyfield are shown in the map below. For more information about the tunnel locations and depths, please visit the online Tunnel Tool [here](#).

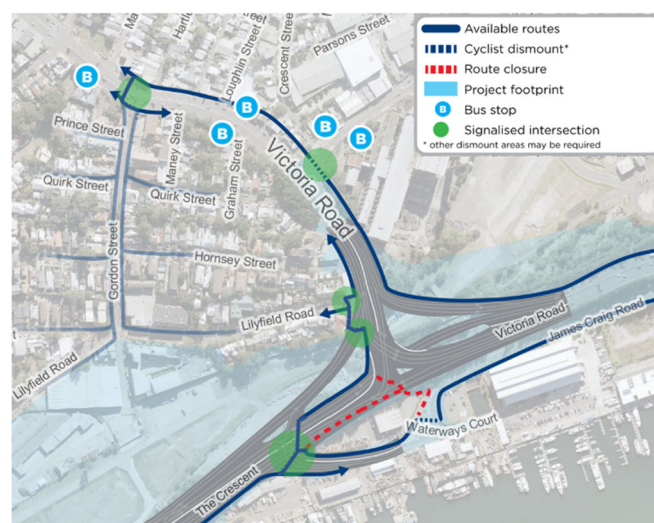




## Pedestrian and cyclist changes on Victoria Road and The Crescent from Wednesday 11 November

From Wednesday 11 November there will be a final major change for pedestrian and cyclists in Rozelle for some time. **The two-phased pedestrian crossing at the intersection of Victoria Road and The Crescent will close and be moved towards James Craig Road.**

As a result, pedestrians and cyclists will cross The Crescent at the shaded green area next to James Craig Road and travel on a new shared path between traffic lanes on The Crescent shown in dark blue on the map to the right.







## Approval of Modification 2 - The Crescent overpass and active transport links

Many of you may be aware that the Department of Planning, Industry and the Environment has approved this Modification proposed by Transport for NSW which includes significant improvements to the original approved design of the Rozelle Interchange. John Holland CPB have been engaged as the construction contractor to build the approved changes including:

- improvements to the Green Link Bridge and connecting pedestrian ramp to provide a continuous shared user connection between the Rozelle Rail Yards parklands and The Crescent near Johnston Street
- construction of The Crescent overpass in Annandale: an elevated road for right turning traffic from The Crescent towards ANZAC Bridge and Victoria Road without stopping at the City West Link/The Crescent intersection
- removal of the horseshoe shaped shared user path bridge between the future Rozelle Rail Yards parklands and the eastern side of The Crescent

The artist's impression below shows the final configuration of City West Link/The Crescent intersection, The Crescent overpass and improved Green Link Bridge approved in this Modification.



### About the Green Link Bridge

The Green Link Bridge is a 15m wide bridge that will provide a direct connection for pedestrians and cyclists between the future Rozelle Rail Yards parklands and Annandale via the Rozelle Bay light rail station.

The bridge will follow a gentle s-shaped curve and include a central shared user path with vegetation on either side. In addition, a new 4.5m wide shared user ramp will be built to connect the Green Link Bridge to The Crescent near Johnston Street. This will allow easy movement to Rozelle Bay.

### About The Crescent overpass

The overpass is an elevated single lane of traffic which will replace the existing right turn movement for vehicles travelling towards ANZAC Bridge and Victoria Road from The Crescent and Johnston Street. Allowing motorists to make this movement without stopping at the traffic lights at City West Link is expected to greatly improve traffic conditions and reduce congestion at the end of the project.

It will begin at road level at Johnston Street and gradually rise to reach its highest point above the westbound lanes on City West Link, before descending to return to road level at the signalised intersection

on The Crescent at James Craig Road. When complete, the road surface of the overpass will be approximately 9m above City West Link at its highest point, similar to the Green Link Bridge.

### Removal of the horseshoe shaped shared user path

Originally included in the 2019 Modification proposal as a replacement for the Beatrice Bush Bridge, this bridge was to be located east of the Green Link Bridge to provide pedestrian and cyclist connectivity between Rozelle and the Rozelle Bay foreshore and Bicentennial Park precincts.

Following community feedback and further development of the Modification proposal through the design review process, the removal of this bridge was approved as part of the design amendment. Removing this bridge provided opportunity to significantly improve the visual amenity of the remaining elevated bridge connections (the overpass and the Green Link Bridge) by reducing the number and height of these remaining structures.

### More information

More information about the changes included in this Modification, including the Modification Assessment Report and a copy of the amended Minister's Conditions of Approval can be found [here](#) on the Department of Planning, Industry and Environment planning portal.



### Progress shots

*Inside the M8 tunnel portal looking towards Lilyfield Road (opposite Ryan and Cecily streets)*



Installation of precast planks is continuing and concrete pours to complete the construction of the roof are also underway.

The roof of the M8 tunnel portal is expected to be completed in December 2020.

*Last section of GST installed next to the light rail tracks*



During the light rail shutdown last weekend, we installed the last section of galvanised steel trough, or GST, between Rozelle Bay and Lilyfield stations.

New electrical cables will be installed inside the GST to power the light rail and the current overhead powerlines to be removed for the Whites Creek Link to be built.

### Courtesy notice - night work on Anzac Bridge and Western Distributor

Please be advised that a separate subcontractor (DM Roads) working for Transport for NSW, will be carrying out streetlight maintenance work at night on Anzac Bridge and the Western Distributor between November 2020 and mid-February 2021.

They will be working between 8pm and 5am up to five consecutive nights at a time with at least a 7 day break at the end of the 5 nights.

If you have questions or would like to make a complaint about this work, please call 1800 332 660 or email [nsw\\_projects@dmroads.com.au](mailto:nsw_projects@dmroads.com.au).



### How to contact us

In line with recent NSW Government health advice regarding COVID-19 and to ensure the safety of the community and staff, we have temporarily closed the Community Information Centre at 84 Lilyfield Road Rozelle.

Please note, you cannot respond directly to this email. If you want to know more about our work or to make a complaint, please contact us on our contact details found below.

Kind regards

**The Community Relations Team**

### Apply for a community grant

Eligible community groups can apply for a grant up to \$10,000 to deliver initiatives that provide long-term benefits to local communities. To view the guidelines and complete your application online visit [www.westconnex.com.au/community/community-grant-program](http://www.westconnex.com.au/community/community-grant-program)

**WestConnex**

Transurban

Submit your application from 12 October to 6 November 2020