

Monday 20 July to Saturday 25 July

Good morning

Below is a summary of Rozelle Interchange construction work taking place at Iron Cove next week. Residents directly impacted by our work on local streets will be provided a more detailed update in the coming days.

Night work

Night work will be carried out along Victoria Road on **Monday 20 July, Tuesday 21 July and Thursday 23 July between the hours of 7pm and 6am**, weather permitting. Work will include:

- mobilising/demobilising traffic control setup each night
- service investigation and excavation work for an Ausgrid connection on the northern verge of Victoria Road near Balmain Shores
- trench excavation (including service locating, and relocating Traffic signal loops) to install new stormwater drainage in the median of Victoria Road between Toelle and Callan streets
- trench excavation (involving road sawing and rock hammering) to install new Ausgrid assets in Victoria Road between Springside and Moodie streets
- backfilling and reinstatement of the work area each night

Trench excavation, road sawing and rock hammering are loud activities, and may be required on each of these nights. As a result, night work next week is expected to generate high levels of noise.



Speed limit on Callan Street

Callan Street remains a shared zone with a speed limit of 10km/hr.

In response to feedback from residents about Callan Street, the project has:

- installed additional speed hump(s)
- installed additional "10km/h" signage on Callan Street
- installing a 'slow down' banner at the top of Callan Street
- changed the messaging of our digital signs on Saturday's to direct drivers specifically to King George Park

We are also:

- conducting more regular sweeps (both hand and sweeper vehicle)
- conducting spot checks of our workers arriving to site in the morning to deter anyone travelling too quickly down the road



For the safety of pedestrians, cyclists and motorists, please obey signage like this on Callan Street.

Please travel slowly and safely on Callan Street.

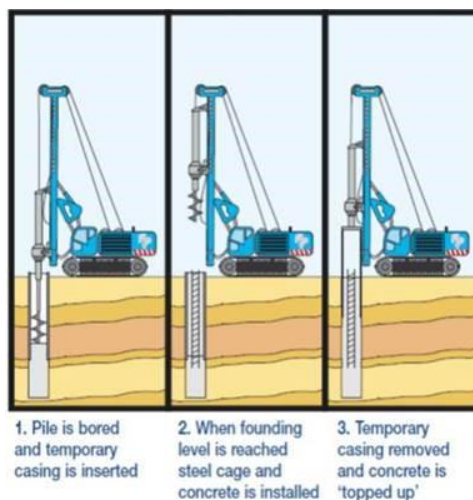
Please let us know if you have any suggestions or ideas for encouraging motorists to adhere to this speed limit.

Important work going on in the site

This week we completed the first stage of piling work within the main site at Victoria Road. We sincerely thank you for your patience throughout piling work as we understand this work has been impactful to nearby residents.

Piling is an important and common construction methodology where heavy beams are inserted into the ground and filled with concrete to create support for structures. At this site, these support beams will be used to support the tunnel entry and exit portals (cut-and-cover), currently being built within our work sites between Callan and Clubb streets. The depth of the piles vary depending on the location, ground conditions and type of structure it's supporting.

We've completed 85 piles at Iron Cove this year and will be required to complete 71 more in 2021 at other locations.



An example of how these support piles are built

General construction FAQs

Hours of work

- Day work will be ongoing within our construction sites and in local streets during standard construction hours from 7am to 6pm Monday to Friday and 8am to 6pm on Saturdays.
- High noise work (rock hammering or saw cutting) will be carried out for three hours at a time before an hour respite is provided. High noise work will finish at 1pm on Saturdays.
- Work that is not intrusive may be completed outside standard construction hours without notification. These activities may include security checks, oversized deliveries and other lower impact activities.
- Night work is scheduled when traffic volumes are too high during the daytime and we don't have approval to work on the road. This typically applies to construction work on Victoria Road. Night work can take place between 7pm and 6am Monday to Friday.

Equipment used

Equipment used for our work (day and night) includes but is not limited to: excavators, rock hammers, jack hammers, line marking removal machines, line marking machines, road saws, vacuum trucks, hand tools, compactors, concrete trucks, light vehicles, cranes, piling rigs, asphaltting machines and generators.

How we're mitigating impacts on Iron Cove residents

Construction work may be impactful to those living nearby. We're trying to limit the impact by:

- changing our construction methodology to reduce the overall duration of high impact activities such as rock hammering, where possible
- scheduling work to happen during the day instead of at night, where possible
- installing noise blankets around our temporary work sites, and noise walls along our long-term construction boundaries
- adhering to the respite breaks during high impact activities (one hour break every three hours)
- using water suppression such as hoses, misters and sprinklers to limit the creation of dust during some activities

How to contact us

Drop into the Community Information Centre at 84 Lilyfield Road, Rozelle NSW 2039. The Community Information Centre is open from 9am to 5pm Monday to Friday (excluding public holidays).

If you want to know more about our work or to make a complaint, please respond to this email or contact the Rozelle Interchange Community Team on 1800 660 248.

Please let us know if you have any suggestions or ideas regarding what you would like to see in this weekly update going forward. We welcome and appreciate your feedback.

Kind regards

The Iron Cove Community Relations Team