

Week starting 30 November 2020 (Update no. 209)

Dear residents

Below is an overview of Rozelle Interchange construction work happening across Rozelle, Lilyfield and Annandale next week. We've broken the update into the following sections:

- night work next week
- tunnel progress update
- new bus stop opening on Victoria Road at Hornsey Street
- information about the new pedestrian and cyclist bridges we're building around City West Link and The Crescent
- progress shots

We'll be changing the content of these updates each week so that they remain relevant to nearby residents. We encourage you to take the time to read the below information as it involves construction work or traffic changes that may impact you.



### Night work next week

Noisy night work next week will be carried out on **Tuesday 1, Wednesday 2 and Friday 4 December (7pm to 6am)** and is expected to create moderate to high noise that may be heard by nearby residents. We sincerely apologise for this.

Work is typically permitted to start on Victoria Road, City West Link and The Crescent from 10pm at night and every effort is made to complete the noisy activities as early as possible. Work in other locations, including the Glebe Island Assembly Area is permitted to start earlier at 6pm.

We've highlighted the approximate locations of night work next week in the map below. Our ongoing night work activities next week include:

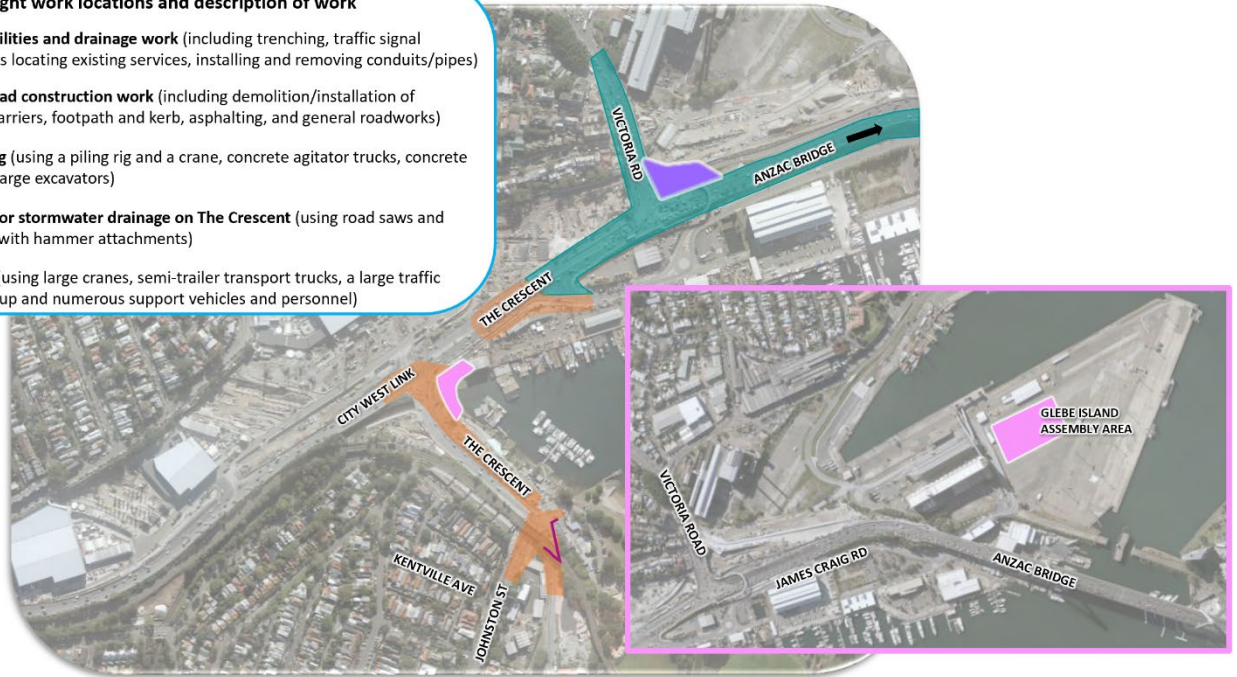
- mobilising/demobilising traffic control setup
- **utility and drainage work**
- **road construction and realignment work**
- backfilling, compacting and reinstating the work area at the end of the shift

Information about [bored piling near Victoria Road next week](#) can be found below the map.

**This work is subject to site and weather conditions and may need to be rescheduled.** Please note that other activities which are non-intrusive (below a certain noise level) such as oversized deliveries, adjusting barriers and fencing and traffic control setup may occur outside of the highlighted areas. For information about how we manage noise from our work, please take a look at the [Construction Fact Sheet](#).

#### Approximate night work locations and description of work

- Ongoing utilities and drainage work** (including trenching, traffic signal adjustments locating existing services, installing and removing conduits/pipes)
- Ongoing road construction work** (including demolition/installation of medians, barriers, footpath and kerb, asphaltting, and general roadworks)
- Bored piling** (using a piling rig and a crane, concrete agitator trucks, concrete pump and large excavators)
- Trenching for stormwater drainage on The Crescent** (using road saws and excavators with hammer attachments)
- Crane lifts** (using large cranes, semi-trailer transport trucks, a large traffic control set up and numerous support vehicles and personnel)



### Bored piling near Victoria Road

Before we begin to build the new Victoria Road Bridge, we'll build a series of 28 bored piles inside our site on the eastern side of the existing Victoria Road bridge. These piles will help support the existing road bridge as we excavate to build the abutments for new one.

Most of these piles will be built during the day, however two need to be built at night due to the proximity of the work area to Victoria Road. We expect to build these two piles in two shifts – one pile per night – on **Tuesday 1 and Wednesday 2 December**.

### What to expect during bored piling

A quieter method than sheet piling, bored piling uses a piling rig to drill a vertical shaft and insert a reinforced steel cage into the ground. Concrete is then poured inside to encase the steel and create the pile. The process of removing dirt from the piling rig creates a banding noise which can be noisy as the head of the machine is rotated to release the excavated material.

A video example of bored piling from inside the Rozelle Rail Yards earlier in the year can be viewed [here](#).



## Tunnelling update

Excavation of the future Rozelle Interchange tunnels is progressing with 22 roadheaders in operation. Next week's expected tunnelling locations in Rozelle and Lilyfield are shown in the map below.

For more information about the tunnel locations and depths, please visit the online Tunnel Tool [here](#).

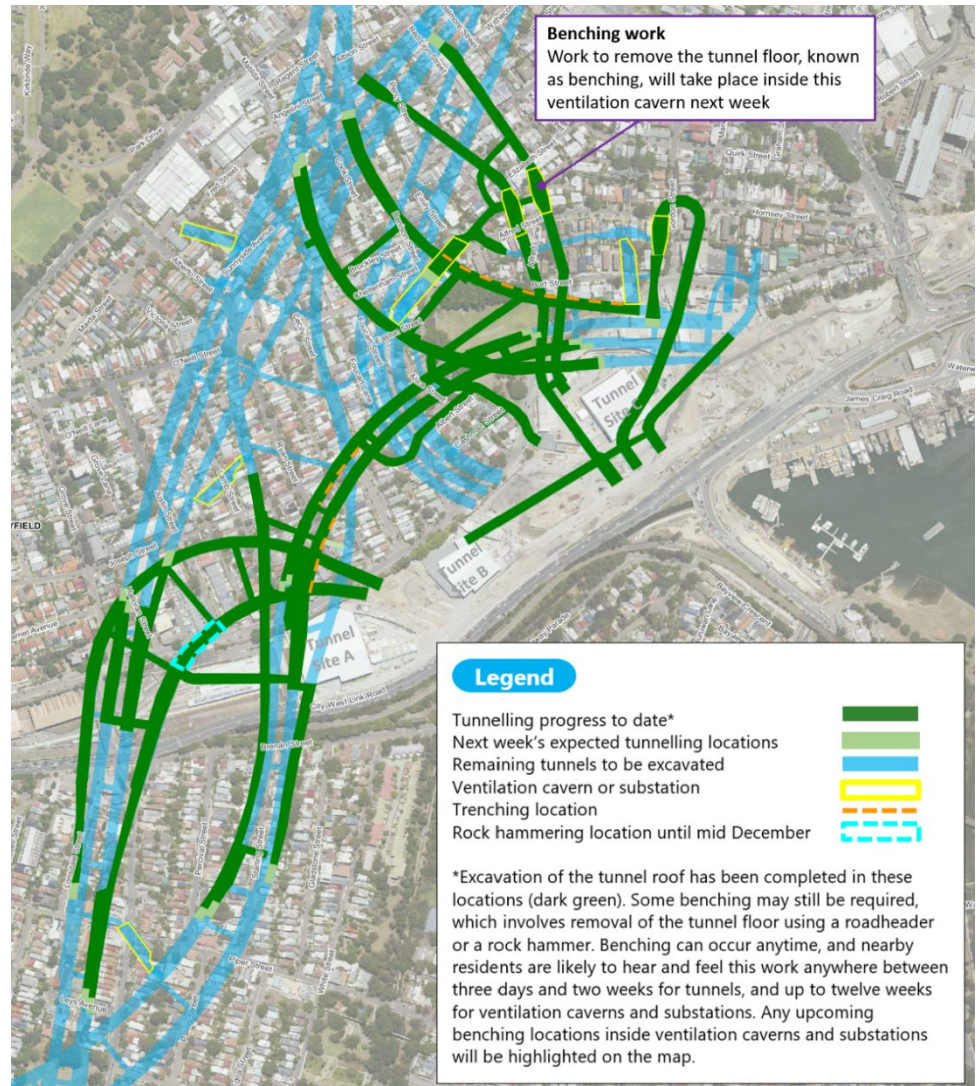
### Installing stormwater drainage inside some tunnels

We're installing new stormwater drainage inside some of the already excavated tunnels ready for the new roads that will be built, just like we're doing for new roads on the surface. Upcoming trenching locations underground are shown with an **orange dashed line** on the map to the right.

Trenching work in the tunnels is only undertaken during our standard construction hours, shown below, and will generate some noise particularly when we're working directly beneath properties.

Once the stormwater drainage is complete, we'll build the new roads inside the traffic tunnels. As on the surface, road work underground can generate some noise however this is not expected to be as noisy as trenching work.

Please note that other tunnelling activities (such as roadheader excavation) will continue 24/7.



## New bus stop opening on Victoria Road at Hornsey Street

We're pleased to advise that the new **bus stop on Victoria Road at Hornsey Street is expected to open on Wednesday 9 December**, shown in the map to the right.

The existing bus stop on Victoria Road before Maney Street (Stop ID 203921) will remain in operation.





## New pedestrian and cyclist bridges around City West Link and The Crescent

A total of six bridge structures will be built near City West Link and The Crescent as part of the Rozelle Interchange. These structures include both elevated bridges (built over the road) and road level bridges (built at or below the road surface).

Construction will happen over multiple stages as the road configuration on City West Link, The Crescent and Johnston Street changes to provide space to build the bridge supports and install girders.

The final appearance of these bridges, including handrails, screening and lighting will be finalised in the Urban Design and Landscape Plan (UDLP) review process. The table and artist impressions from the UDLP below provide an overview of the three pedestrian and cycle bridges and where they will be built.



Bridge	Elevated or road level	Location
Whites Creek Bridge	Road level	Pedestrian and cyclist bridge over Whites Creek and a new drainage channel adjacent to Rozelle Bay connecting with the new footpaths on The Crescent. Utility cables will be attached to the underside of this bridge to complete the new cable networks on The Crescent, James Craig Road and Victoria Road.
Green Link Bridge	Elevated	Pedestrian and cyclist bridge over City West Link connecting Rozelle Bay light rail station with the future Rozelle Rail Yards parklands. A pedestrian and cyclist ramp will be built to connect the light rail station with the new footpath at The Crescent and Johnston Street
Whites Creek Link	Elevated	Pedestrian and cyclist bridge over City West Link connecting Brennan Street, Lilyfield with the future Rozelle Rail Yards parklands







## Progress shots



*Inside one of the future Rozelle Interchange ventilation tunnels:*

*Slightly smaller than traffic tunnels, the ventilation tunnels will connect the traffic tunnels with the three ventilation outlets that will be built in the Rozelle Rail Yards. The white and yellow tubes running along the roof provide ventilation during construction.*



*Building the Whites Creek Link:*

*The first pier for the Whites Creek Link (centre) has been built and we've started to build the deflection walls on either side. These deflection are a protective measure due to the bridge's close proximity to light rail vehicles travelling along the tracks behind.*



### Update on Rozelle and Lilyfield Resident Parking Scheme

As you may be aware, Transport for NSW recently conducted a survey in your area to understand your views on a proposed Rozelle and Lilyfield Resident Parking Scheme. We would like to say thank you to the over 400 of you who responded.

The results have shown that a majority of residents (57 per cent) were opposed to the proposed parking scheme. In addition, around 35 per cent of respondents suggested changes that are unfortunately incompatible with Council policy. Only 11 per cent of residents were in favour of implementing the scheme. After discussing the feedback with the Inner West Council, the proposed Resident Parking Scheme will not be introduced.

We are pleased, however, to advise that the Rozelle Interchange Project has introduced a new off-street parking facility for workers at a site a few hundred metres from the Rozelle Railyards at Glebe Island. Along with the parking spaces available on-site at the Railyards, this additional space has been secured to free up on-street parking availability around our site. The initial trial is for 50 parking spots, with the ability to increase to a total of 200 spaces if the trial is successful. A shuttle bus service will run between the parking facility and the Project site on a constant loop from 6:30am until 6:30pm to encourage our workers to take up this opportunity.

Click [here](#) for the full online letter.



## How to contact us

In line with recent NSW Government health advice regarding COVID-19 and to ensure the safety of the community and staff, the Community Information Centre at 84 Lilyfield Road Rozelle remains temporarily closed.

Please note, you cannot respond directly to this email. **If you would like to know more about our work or to make a complaint, please contact us at the details provided below.**

P: 1800 660 248

E: [info@rozelleinterchange.com.au](mailto:info@rozelleinterchange.com.au)

We'll endeavour to resolve your complaint or answer your enquiry as quickly as possible, and you will receive a response from the project within five (5) business days.



## Construction FAQ's

For more information about standard construction rules, please click [here](#). This information includes:

- Hours of work
- Standard equipment used
- How we mitigate impacts to residents

We understand that our work is impacting local residents, businesses and commuters and we sincerely thank you for your continued patience while we carry out construction work in this area.

Kind regards

**The Community Relations Team**