

Good afternoon

In August, September and October, there will be some key changes to your commute in Rozelle and Annandale whether you're a pedestrian, cyclist or motorist. This email is to provide you with information about these changes and has been broken down into the following sections:

- Key pedestrian and cycle changes from Friday 21 August
- Key pedestrian, cycle & motorist changes in the weeks and months following
- Why these changes are necessary
- The construction activities required to make these changes

As dates for some of the changes are still to be confirmed, and in order to effectively communicate new routes as they take effect, we'll be sending out an email ahead of each of the following changes happening. Please look out for these emails titled '**Important changes to your route**'.

We thank you for your ongoing patience as we carry out this work.

Key changes from Friday 21 August

From Friday 21 August there will be two key changes to pedestrian and cyclist connectivity in Rozelle:

- a new pedestrian and cyclist shared path will open between Victoria Road and ANZAC Bridge. Pedestrians and cyclists will have direct access to and from ANZAC Bridge from the Balmain side of Victoria Road (south of Robert Street)
- The Beatrice Bush Bridge (horseshoe bridge over Victoria Road) will be permanently closed, and the structure removed in stages in the weeks following. This bridge will not be replaced.

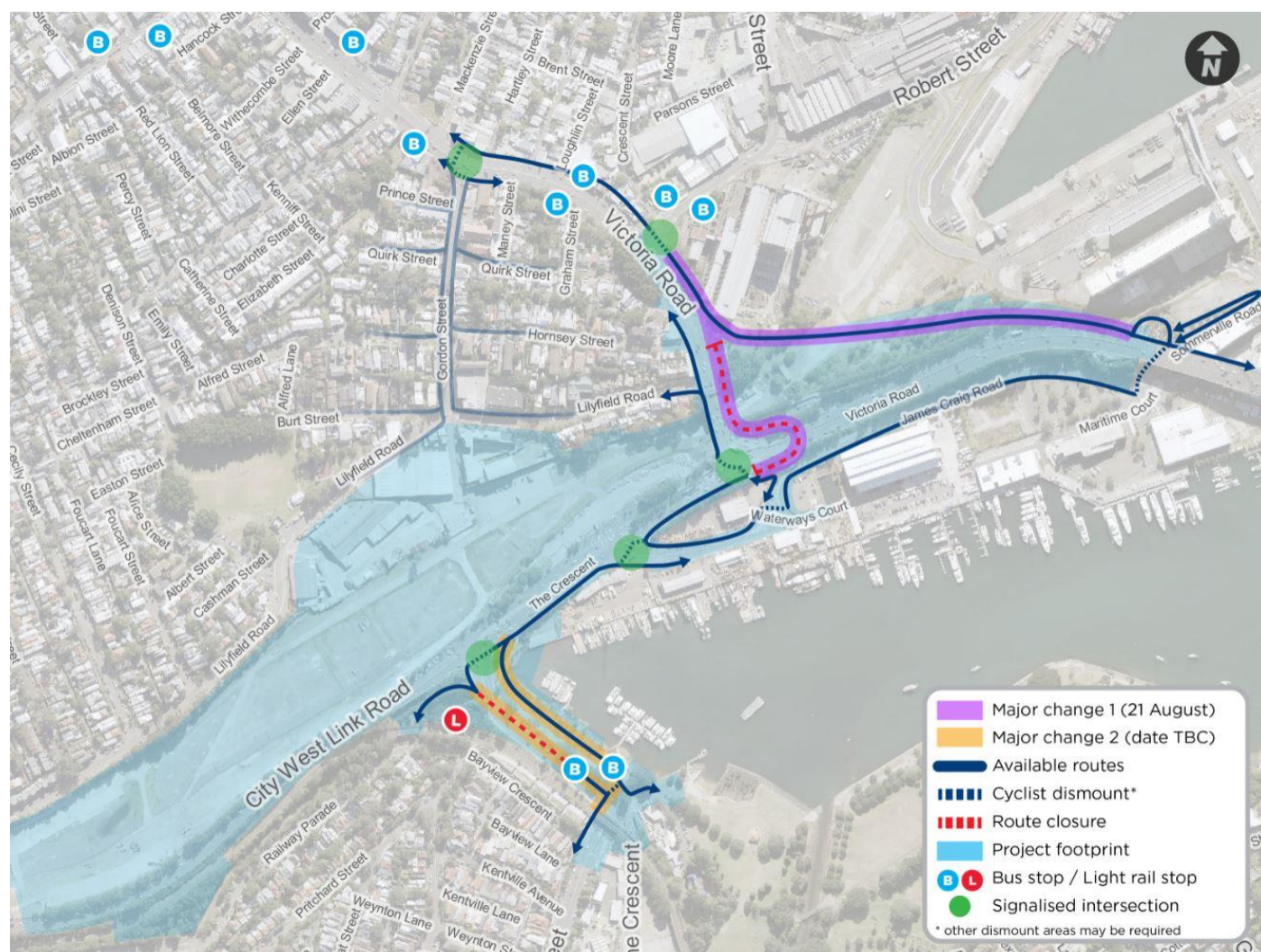
These changes are shown in **purple** on the map below.

From late August or early September, the following changes will be in place for pedestrians, cyclists and motorists:

- all traffic lanes on The Crescent between Johnston Street and City West Link intersection will be shifted east onto a newly constructed roadway (closer to Rozelle Bay). All current traffic movements will be maintained however motorists will travel on a new section of road as shown in the map below.
- the pedestrian and cycle shared path on The Crescent (next to the mural) will be closed between the former Buruwan Park and the bus stop. Pedestrians and cyclists will be

detoured to a new pedestrian and cyclist shared path on the other side of The Crescent next to Rozelle Bay.

These changes are shown in **orange** on the map below. More information about these changes will be provided once a date is confirmed.



Given these changes, what is my new route from Rozelle, Lilyfield or Balmain?

Coming from	Route to ANZAC Bridge
Rozelle (Balmain side of Victoria Road) & Balmain	Stay on the same side of Victoria Road to connect to the new pedestrian and cyclist shared path (south of Robert Street) leading to the ANZAC Bridge
Rozelle (west of Victoria Road) & Lilyfield	Travel to the intersection of Gordon Street and Victoria Road, cross Victoria Road, turn right and travel to connect with the new pedestrian and cyclist shared path onto ANZAC Bridge
Coming from	Route to Annandale
Rozelle, Lilyfield & Balmain	Travel to the intersection of Gordon Street and Victoria Road, cross Victoria Road, turn left and travel to the two-phased signalised intersection at The Crescent

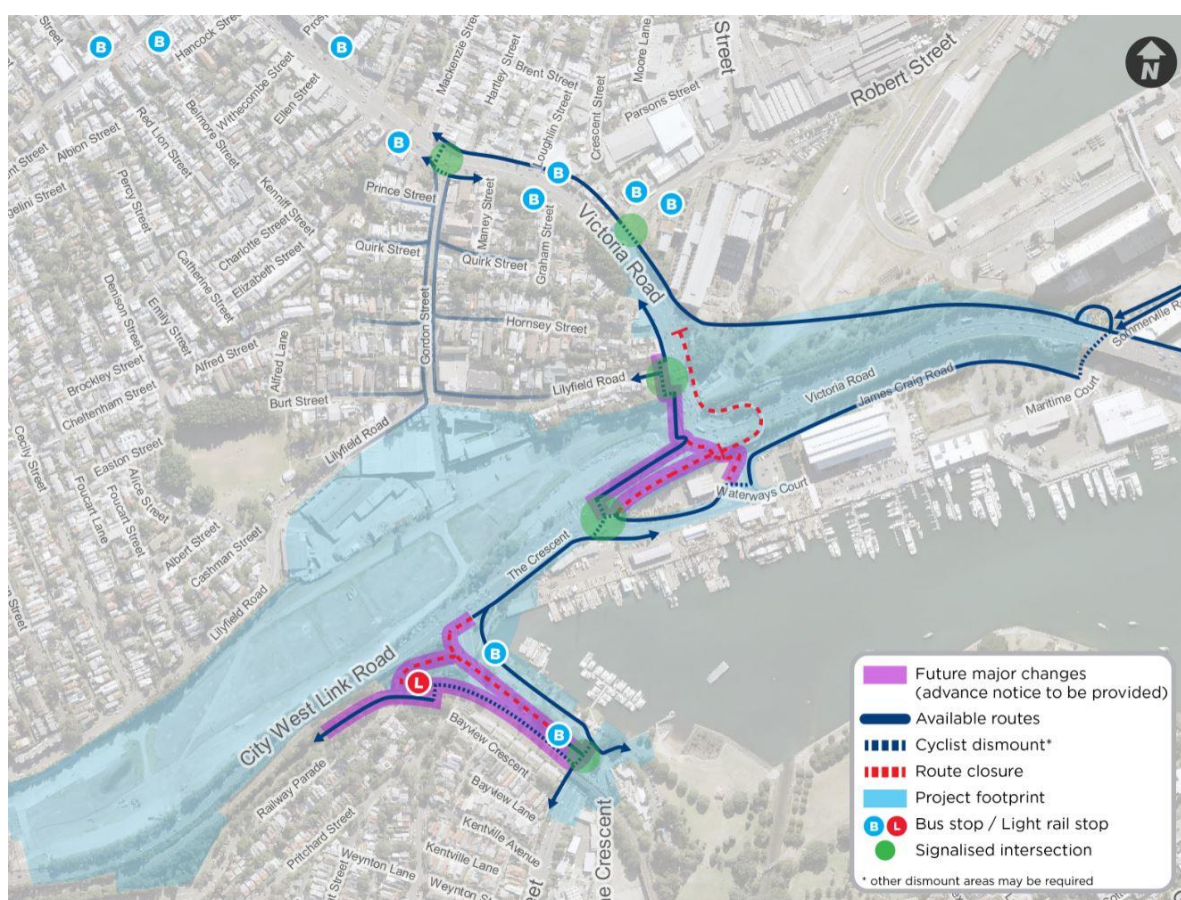
Given these changes, what is my new route from Annandale?

Coming from	Route to ANZAC Bridge
Annandale (Johnston Street)	Travel to the intersection of Johnston Street and The Crescent, cross the intersection, turn left and travel along the new shared pedestrian and cyclist path
Annandale (from the Light Rail platform)	No change for now

Key pedestrian, cycle & motorist changes in the weeks and months following

There will be more changes for pedestrians and cyclists in the following weeks and months as listed and shown below. We'll send out email communication prior to each of these changes happening so please look out for emails titled 'Important changes to your route':

- Access through the former Buruwan Park (between Bayview Crescent and The Crescent) will close. The crossing of The Crescent/City West Link will also close at this time for pedestrians. Pedestrians will instead travel down a new ramp along The Crescent that connects the light rail platform with the existing pedestrian crossing at Johnston Street
- A new pedestrian and cyclist shared path will open from Lilyfield Road to The Crescent. The existing path on Victoria Road will shut
- The existing two-phased signalised crossing at Victoria Road/The Crescent will be closed
- A new signalised crossing will be installed opposite James Craig Road to enable pedestrians and cyclists to cross The Crescent
- The staircase from Victoria Road to James Craig Road will close.



At around the same time, there'll be some key changes for motorists (see image below):

- A temporary road will accommodate vehicles travelling from Victoria Road to the ANZAC Bridge. This is called the **Eastern Temporary Access Road (ETAR)**
- A temporary road will accommodate vehicles travelling from The Crescent onto Victoria Road. This is called the **Western Temporary Access Road (WTAR)**

All current traffic movements will be maintained however some traffic lanes will be realigned. The below map provides a high level overview of the new temporary roads, further information including the specific lane configurations, will be provided ahead of these changes happening.



Why these changes are necessary

These changes are needed so that we can start construction of the following permanent structures and roads:

- rebuild the current intersection at Victoria Road/The Crescent in Rozelle (shown in yellow in the map above). We'll also be constructing tunnel entry and exit ramps linking to ANZAC Bridge. The Beatrice Bush Bridge is being removed as the bridge ramps and support columns are in the way of the future tunnel entry and exit ramps.
- reconfigure the intersection at The Crescent/City West Link in Annandale as well as build bridges and other infrastructure in this area

Construction work required to make these changes

Work is currently underway to complete the temporary roads and pedestrian and cyclist paths which will be in place until 2022. Construction work required to build these structures includes piling, concrete pours, installation of signage, lighting and street fixtures.

Work to move the traffic, pedestrian and cyclist infrastructure for the above changes, will usually be carried out at night under a "traffic switch". Large traffic control arrangements will be in place on the nights of the traffic switches.

A key piece of upcoming construction work will involve the **removal of Beatrice Bush Bridge** in stages over multiple weekends mostly at night. In order to remove the bridge structure, some lanes on the ANZAC Bridge will be temporarily closed to traffic. Further details about the work and resulting traffic detours will be provided to you closer to the date.

We understand that there will be a number of changes for motorists, cyclists and pedestrians over the coming months. **Detailed information will be released in advance of each change** so you know when and where the changes are happening and can plan your journey ahead of time. Wayfinding and signage will be in place to help direct you where to go.

How to contact us

In line with recent NSW Government health advice regarding COVID-19 and to ensure the safety of the community and staff, we are re-closing the Community Information Centre at 84 Lilyfield Road Rozelle. For any information you may require, please **email us at info@rozelleinterchange.com.au** with your enquiry and a contact number for us to call you, or contact the Rozelle Interchange Community Team on 1800 660 248.

Please let us know if you have any suggestions or ideas regarding what you would like to see in this weekly update going forward. We welcome and appreciate your feedback.

Kind regards

The Rozelle Interchange Community Relations Team