

### Monday 3 August to Sunday 9 August

Good afternoon

Below is a summary of Rozelle Interchange construction work taking place at Lilyfield, Rozelle and Annandale over the next week.

A separate progress update (fortnightly or as required) will be sent to residents who are adjacent to our sites or directly impacted by our work on local streets.

### Night and weekend work

Noisy night work will be carried out on Monday 3 August and Friday 7 August between the hours of 7pm and 6am (weather permitting).

If work cannot be undertaken on these nights, a contingency night may be used on either Tuesday 4 August, Wednesday 5 August, Thursday 6 August. We'll advise you via email if a contingency night is required.

August planned night work calendar							High impact noise work nights	Contingency nights
Monday	Tuesday	Wednesday	Thursday	Friday	Saturday	Sunday		
						1	2	
3	4	5	6	7	8	9		
10	11	12	13	14	15	16		
17	18	19	20	21	22	23		
24	25	26	27	28	29	30		
31								

We're able to carry out three nights of noisy work per week with no more than two consecutive nights of work.

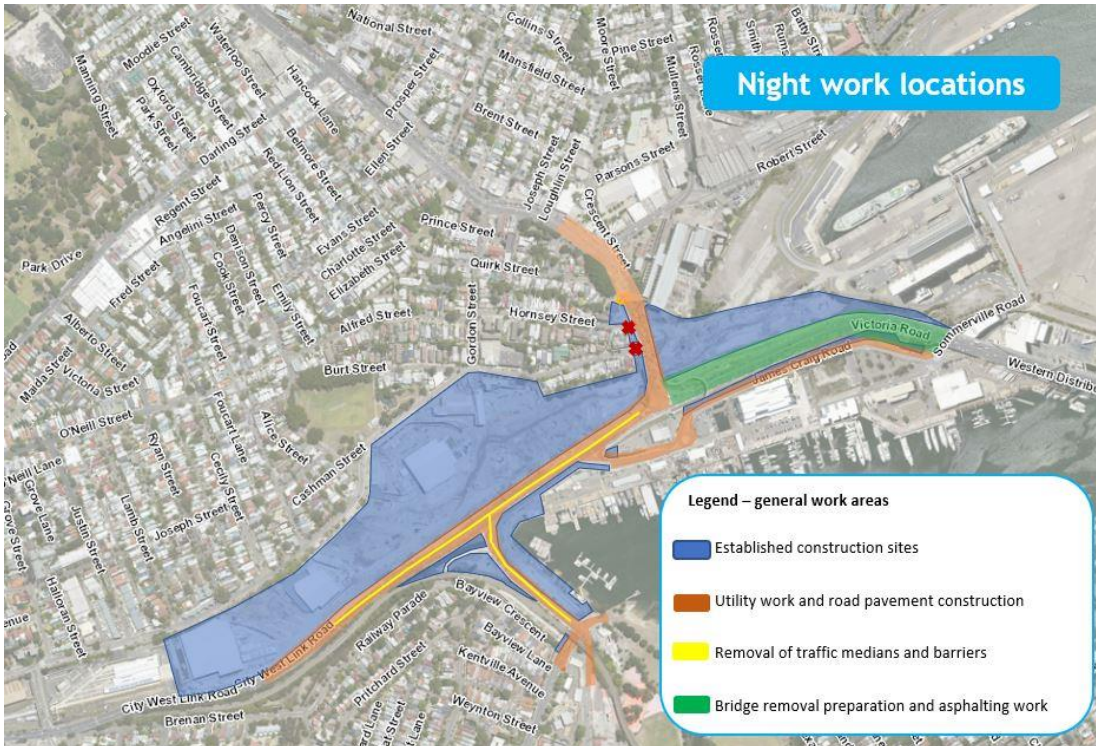
Night work dates are subject to change due to weather, site conditions and outages from utility providers.

Night work next week will include:

- mobilising/demobilising traffic control setup each night
- utility work including: potholing, utility installation/adjustment work (power, water, sewer, communications and gas), connection work, maintenance work and adjustments to traffic control signals in preparation for upcoming traffic changes. All of these activities may require:
  - trenching to access the utility (rock hammering and saw cutting)
  - cutting and welding of pipes
  - vacuuming to identify utilities.
- removal, relocation and installation of traffic medians and barriers (involving concrete sawing and hammering)
- road pavement construction (involving road sawing, rock hammering, concrete work, line marking and the use of a milling machine to remove the top layers of the road surface)
- preparation work for the closure of Beatrice Bush Bridge involving asphaltting on Western Distributor, removing some handrails and pavement and installing anchors backfilling and reinstatement of the work area each night.

Barrier demolition, road sawing and rock hammering are loud activities, and may be required on each of these nights. As a result, night work next week is expected to generate high levels of noise.

There may be service outages associated with this night work. Streets or properties that are expected to be impacted by an outage, will be provided a specific update prior to the work taking place.



### Sunday work

To assist in facilitating physical distancing amongst our work crews and in line with Government recommendations, work will also take place on Sunday 2 and 9 August between the hours of 8am to 6pm (weather permitting). A notification about work on Sundays, is attached to this email. Work on these Sundays will include:

- installing new stormwater drainage
- building retaining walls
- tie-in work at Victoria Road for the new shared user path that will connect to the ANZAC Bridge.

### Key updates

- A full road closure has been implemented on Quirk Street at Victoria Road from today. The closure will be in place until approximately October this year.
- From Monday 3 August, the speed limit on The Crescent between Johnston Street and City West Link, will be reduced to **40km/hr**. This speed reduction will allow construction activities located close to The Crescent, to be carried out safely during the daytime.
- We're looking for your feedback about what you'd like to see in the Urban Design and Landscape Plan. Please click here to have your say.

#### What aspects of the Urban Design and Landscape Plan interest you the most?

A key aspect of the Urban Design and Landscape Plan (UDLP) for Rozelle Interchange is the transformation of the former Rozelle Rail Yards into an open green space of up to 10 hectares, similar in size to Victoria Park near Sydney University.

**Our online values survey for the draft UDLP is open for feedback.** Your feedback from this survey will help inform what aspects of urban design and landscaping you're most interested in learning about. We'll then use this feedback to make sure we're giving you the information you need during our public exhibition period. **The survey is open until 2 August 2020.**

The online survey and factsheet about the upcoming plan can be accessed by visiting [westconnex.com.au](http://westconnex.com.au) and searching for **Rozelle Interchange**.

Rozelle Interchange  
WestConnex

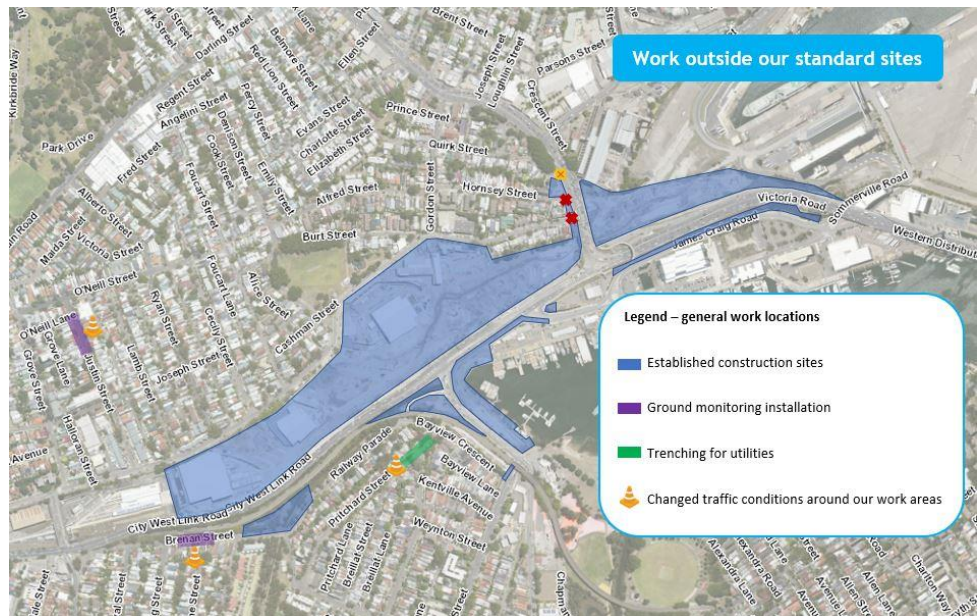
JOHN HOLLAND CPE

## Work happening outside our established sites

**Ground monitoring equipment** will be installed at the following locations below next week (shown in purple on the map to the right) during standard construction hours **7am to 6pm Monday to Friday and 8am to 6pm on Saturdays**. The equipment is being installed ahead of tunnelling happening in the area (note, tunnelling may not be taking place at these exact locations):

- Justin Street between O'Neill and Joseph streets
- Brenan Street between Catherine Street and Railway Parade

To find out more information on ground monitoring or what's required to install the equipment please click [here](#).



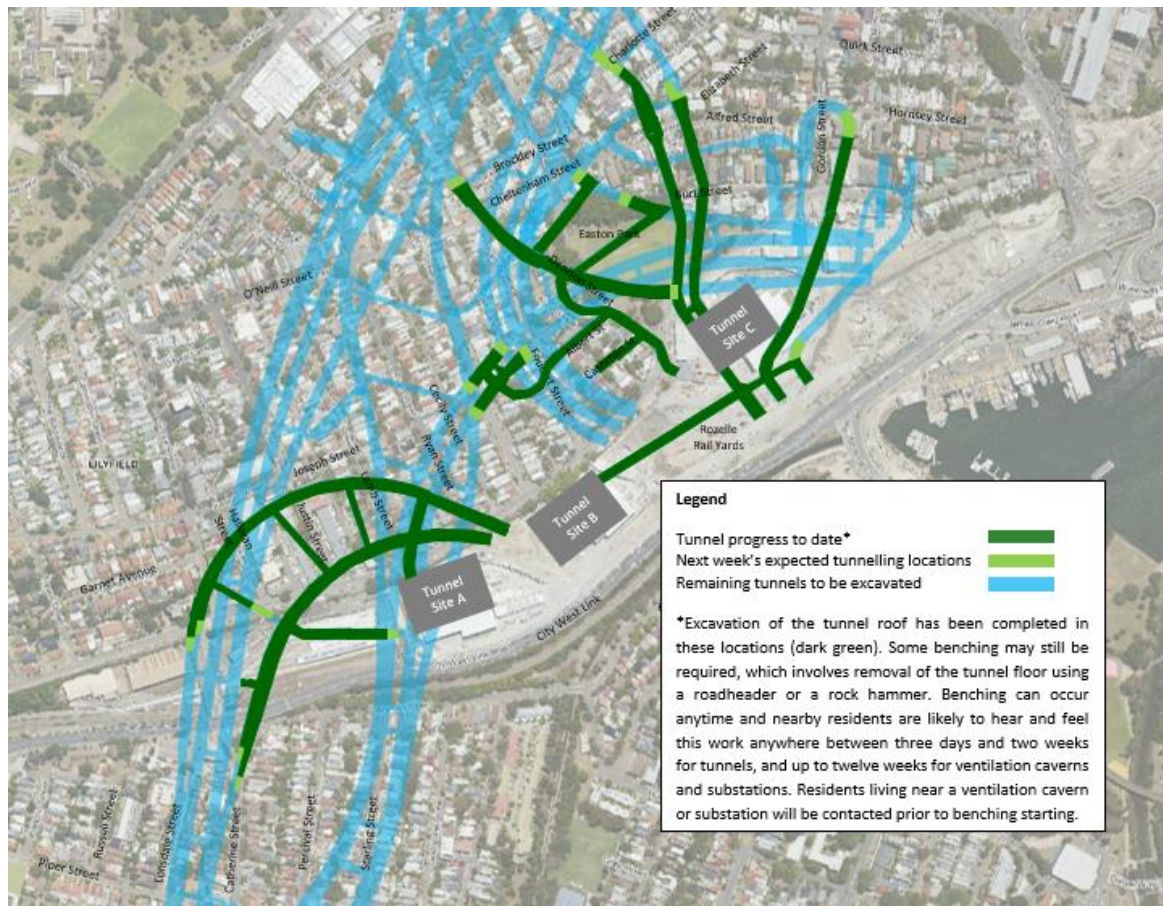
We'll begin trenching to install electricity cables on **Pritchard Street close to Bayview Crescent** in Annandale from next Monday 3 August. The site will be approximately 20 metres long and will gradually move up Pritchard Street over the coming weeks. More information about this work will be sent to Annandale residents shortly.

## Weekly tunnel progress update

Tunnelling will continue 24/7 and next week's expected tunnelling locations are shown on the map below. Concrete deliveries and spoil haulage at the tunnel sites may occur outside standard construction hours; however, both are expected to have minimal, if any, noise impact to nearby residents.

From Monday 3 August, we'll start the construction of an air intake shaft in the Rozelle Rail Yards opposite Easton Park. This work will involve 12 months of excavation and construction activities. [For more information please click here.](#)





## Progress shots



Image below shows the Eastern Temporary Access Road (ETAR) being constructed. This road will eventually be used by cars travelling from Victoria Road to ANZAC Bridge until the Victoria Road bridge is rebuilt.



Image showing construction of the Eastern Temporary Access Road (ETAR) looking towards Victoria Road

## Construction FAQs

### Hours of work

- Day work will be ongoing within our construction sites and in local streets during standard construction hours from 7am to 6pm Monday to Friday and **8am to 6pm on Saturdays**.
- Due to COVID-19 restrictions we are approved to undertake day work between **8am and 6pm on Sundays** to allow for social distancing to be observed.
- High noise work (rock hammering or saw cutting) will be carried out for three hours at a time before an hour respite is provided. High noise work will **finish at 1pm on Saturdays**. Please note that some activities such as piling, can be carried out until **6pm on Saturdays**
- Work that is not intrusive may be completed outside standard construction hours without notification. These activities may include security checks, oversized deliveries and other lower impact activities
- Tunnelling and tunnel support activities such as loading ground material into trucks and working inside the tunnel sheds, may happen 24/7.
- Night work is scheduled when traffic volumes are too high during the daytime and we don't have approval to work on the road. This typically applies to construction work on Victoria Road, City West Link and The Crescent. Night work can take place between 7pm and 6am Monday to Friday.

### Equipment used

Equipment used for our work (day and night) includes but is not limited to: excavators, rock hammers, jack hammers, line marking removal machines, line marking machines, road saws, vacuum trucks, hand tools, compactors, concrete trucks, light vehicles, cranes, piling rigs, asphaltting machines and generators.

### How we're mitigating impacts on Rozelle, Lilyfield and Annandale residents

Construction work may be impactful to those living nearby. We're trying to limit the impact by:

- changing our construction methodology to reduce the overall duration of high impact activities such as rock hammering, where possible
- scheduling work to happen during the day instead of at night, where possible
- installing noise blankets around our temporary work sites, and noise walls along our long-term construction boundaries
- adhering to the respite breaks during high impact activities (one hour break every three hours)
- using water suppression such as hoses, misters and sprinklers to limit the creation of dust during some activities

### How to contact us

In line with recent NSW Government health advice regarding COVID-19 developments and to ensure the safety of the community and staff, we have **closed the Community Information Centre** at 84 Lilyfield Road Rozelle. Please do not hesitate to email us at [info@rozelleinterchange.com.au](mailto:info@rozelleinterchange.com.au) with your enquiry and a contact number for us to call you.

If you want to know more about our work or to make a complaint, please **email us at** [info@rozelleinterchange.com.au](mailto:info@rozelleinterchange.com.au) or contact the Rozelle Interchange Community Team on **1800 660 248**.