

Rozelle Interchange

WestConnex

Balmain Sewer Relocation Factsheet | December 2019

The Rozelle Interchange is the final stage of WestConnex, comprising of a new underground motorway interchange which provides connectivity to the M4-M5 Link Tunnels and the City West Link. It will provide an underground bypass of Victoria Road between Iron Cove Bridge and Anzac Bridge. It will also connect to the proposed Western Harbour Tunnel.

We're relocating the Balmain Sewer

Before we start work on Victoria Road to build new traffic lanes and the tunnel entry and exit portals, we'll need to move a section of the existing Balmain sewer line.

The Balmain sewer line currently runs from Warayama Place across Victoria Road towards Toelle and Callan streets and down past McCleer Street to Moodie Street.

We're replacing this section of the sewer with a new section approximately 380m long running from Yara Avenue diagonally across Victoria Road to the corner of Moodie Street, down Moodie Street just past McCleer Street where it will reconnect to the existing line (see the diagram below).

We'll also need to connect local sewer lines to this new section and build some new manholes and vents.

This work will start Monday 13 January 2020 and is a significant piece of work that is expected to take 6 months to complete and will involve a number of long-term road closures.

What work will be required?

To build this new section of the sewer, we'll be doing work in several places. These places and the work involved is described below.

Moodie Street (north)

The main part of this work will involve digging a launch pit 13 metres deep within the road on Moodie Street (at the northern end) and underboring from this location across Victoria Road and Terry Street to connect to the existing line at Yara Avenue.



Work will commence Monday 13 January 2020

Key definitions:

Underboring: this is a way of installing underground pipes and conduits without the need for trenching. It is done by drilling a hole (bore) beneath the ground from a launch pit in which pipes and conduits are pulled through to a receiver pit.

Launch/receiver pits: beginning and end points of horizontal directional drilling operations. It is used to stage drilling operations, including the placement of equipment and the insertion of the drilling head. Both launch pits and exit pits are used in trenchless construction.

For more information

Drop in to the Community Information Centre
Open 9am to 5pm Monday to Friday (excluding public holidays)
84 Lilyfield Road,
Rozelle, NSW 2039

1800 660 248

info@rozelleinterchange.com.au

westconnex.com.au



We speak your language

Visit westconnex.com.au
Need an interpreter?
Call the Translating and Interpreting Service on **131 450**

Constructed by

A bore from just south of McCleer Street will be received here and two new manholes constructed. A sewer vent pipe will be installed near the corner of Moodie Street and Victoria Road

This work will start in January 2020 and will require Moodie Street to be closed at Victoria Road for up to six months. A temporary work site will be established at the launch site and will remain in place for the duration of the work.

The map below shows our work area and the required traffic changes in the immediate area. Pedestrian access through Moodie Street will be maintained on the western footpath. Cyclists can continue down other streets or dismount as they pass the work site. Signage and traffic control will be in place to guide motorists to detour routes.

No parking spaces are required to be removed at this location, and access to driveways will always be maintained.



Moodie Street (south)

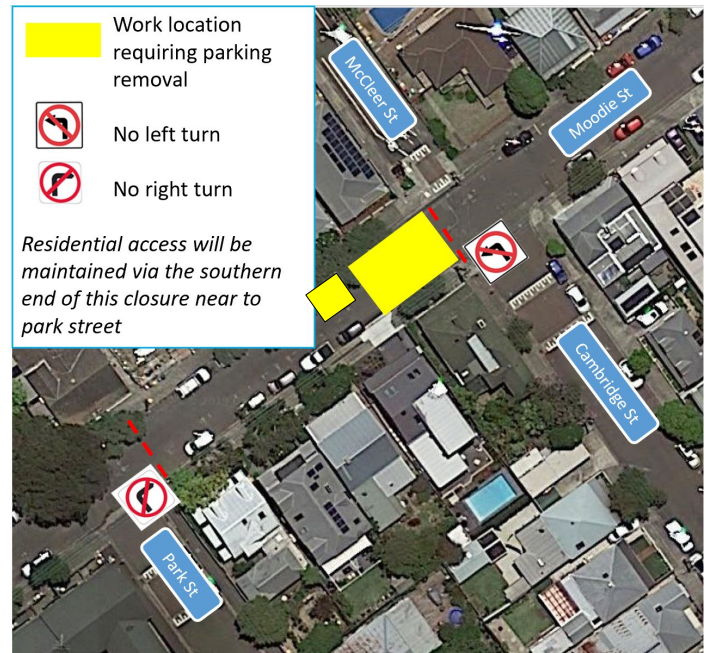
A launch pit 8 metres deep will be also be dug within the road on Moodie Street south of McCleer and Cambridge streets and underbore to the pit near the corner of Victoria Road. A new manhole will be constructed within the launch pit location and the existing manhole modified.

This work will require a closure of Moodie Street between Park and Cambridge streets for up to three months. A temporary work site will be established at this location and will remain in place for the duration of the work.

We'll be in touch with residents adjacent to the work area to discuss access.

The map below illustrates our work area and the required traffic changes in the immediate area. Pedestrian access will not be impeded during this work.

A total of 5 parking spaces will be required to be temporarily removed throughout this work.



Springside and Callan streets

When we remove the current section of the Balmain Sewer on the map below, we will need to reconnect the local sewer system to the new section. This will require us to dig trenches at the intersection of McCleer and Springside and McCleer and Callan streets and build manholes in both streets.

This work is scheduled to start February 2020 and take approximately one month on each street to complete. As the streets are very narrow, we will need to close them to non-residential traffic while we work. Stop slow traffic controls will be in place and access to driveways will always be maintained.

A temporary work site will be established each day and de-mobilised at the conclusion of each shift.

A total of 10 spaces on Springside Street and 13 spaces on Callan Street will be required to be temporarily removed each day.

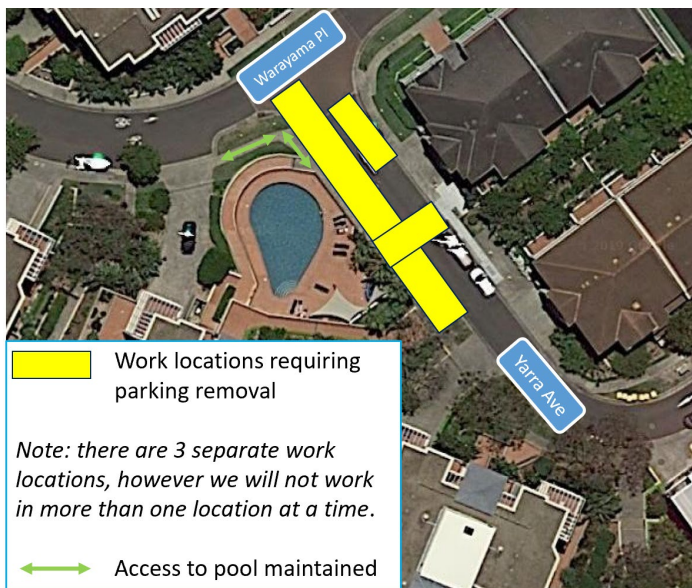


Yara Avenue

The main part of this work will involve digging a launch pit 5 metres deep within the road at the end of Yara Avenue near to the intersection with Warayama Place and underboring from this location to Terry Street. Two new manholes will also be built in this location and we'll need to close the footpath adjacent to the work location and remove one tree, and part of the kerb within the road reserve in front of 6-8 Yara Avenue. Once the boring is complete other works will occur on the existing manholes.

This work is scheduled to start in January and take approximately four months to complete. Stop/Slow traffic control will be in place in Yara Avenue and parking will need to be temporarily removed. Access to driveways will always be maintained and one-way traffic will be maintained for most of the work.

A total of 8 parking spaces will be required to be temporarily removed throughout this work.



Terry Street

In Terry Street, we'll need to install two new manholes and dig launch and receival pits to connect the local sewer line to the new Balmain sewer main and facilitate the connection of the relocated main to Yara Avenue and Moodie Street. This will involve digging a large pit 12 metres deep in the southbound lane of Terry Street. An additional pit 8 metres deep will be excavated adjacent to the Terry Street footpath to underbore a sewer property service.

This work is scheduled to start in January 2020 and will require closure of the outbound traffic lanes on Terry Street (left turn lanes onto Victoria Road) for approximately four months. Footpaths will remain open. Incoming traffic from Victoria Road into Terry Street and footpaths will not be impacted.

A temporary work site will be established at these locations and will remain in place for the duration of the work.

There will be some impacts to on-street parking and cycle lanes and some short-term stop/slow traffic controls. Access to driveways will always be maintained.

The map below illustrates our work area and the required traffic changes in the immediate area.

A total of 7 spaces will be required to be temporarily removed for this work.



Construction hours

Work will mostly take place in our standard construction hours of **7am to 6pm Monday to Friday** and **8am to 6pm on Saturdays**, but some work will need to take place on Sundays or at night.

Activities undertaken at night will include:

- setting up work areas at locations adjacent to Victoria Road and pinning control barriers to the road
- sewer connection work and installing new by-pass pumps so that the network can be accessed in low flow times to prevent a shutdown

Residents will be notified ahead of night work.

Further information about this work will be provided in future notifications. To receive our weekly e-updates on the progress of this work **please provide us with your email address** and we'll subscribe you to our distribution list.

Parking removal

Please let us know if you have any requirements for parking in the areas identified in this fact sheet by **Monday 6 January 2020**.

Please email us at info@rozelleinterchange.com.au.