

Sunday 26 July to Sunday 2 August

Good morning

This weekly update is being sent on Tuesday this week as it includes information about work this coming Sunday and we'd like to provide sufficient notice of this work.

Below is a summary of Rozelle Interchange construction work taking place at Lilyfield, Rozelle and Annandale over the next week. Residents directly impacted by long-term work on local streets will receive a separate fortnightly (or as required) progress update.

Night and weekend work

Noisy night work will be carried out on Monday 27 July and Tuesday 28 July between the hours of 7pm and 6am (weather permitting). If work cannot be undertaken on these nights, a contingency night may be used on either Wednesday 29 July, Thursday 30 July, Friday 31 July. We'll advise you via email if a contingency night is required.

July							High impact noise work nights
Mon	Tues	Wed	Thurs	Fri	Sat	Sun	Contingency nights
		1	2	3	4	5	
6	7	8	9	10	11	12	
13	14	15	16	17	18	19	
20	21	22	23	24	25	26	
27	28	29	30	31			

We're able to carry out three nights of noisy work per week, with no more than two consecutive nights of work.

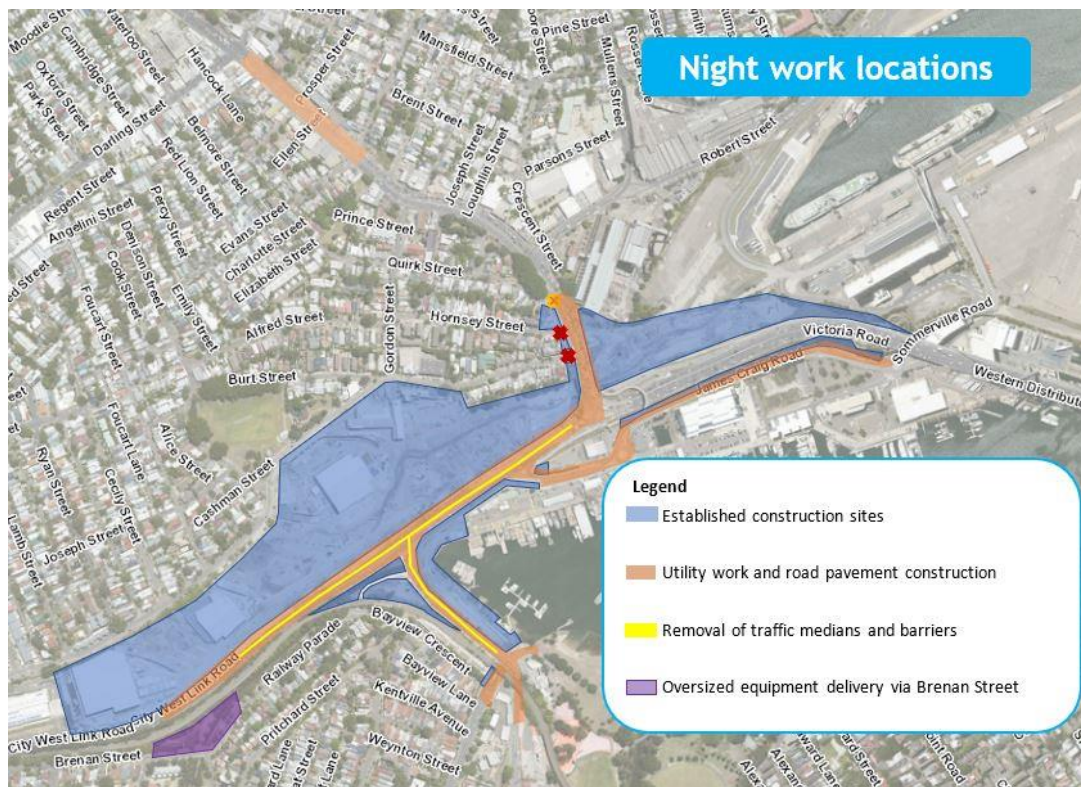
Night work dates are subject to change due to weather, site conditions and outages from utility providers

Night work will include:

- mobilising/demobilising traffic control setup each night
- utility work including pot holing and trench excavation (involving road sawing and rock hammering) including stormwater drainage installation, service locating and utility installation/adjustment work, adjustments to traffic control signals (involving road sawing and hammering) in preparation for upcoming traffic changes
- delivery of oversized equipment to our sites including the Whites Creek site via Brenan Street
- removal of traffic medians and barriers (involving concrete sawing and hammering), and movement of traffic medians and barriers
- road pavement construction (involving road sawing, rock hammering, concrete work, line marking and the use of a milling machine to remove the top layers of the road surface)
- backfilling and reinstatement of the work area each night

Barrier demolition, road sawing and rock hammering are loud activities, and may be required on each of these nights. As a result, night work next week is expected to generate high levels of noise.

There may be service outages associated with this night work. Streets or properties that are expected to be impacted by an outage, will be provided a specific update prior to the work taking place.



Sunday work

To assist in facilitating physical distancing amongst our work crews and in line with government recommendations, work will also take place on **Sunday 26 July and Sunday 2 August** between the hours of **8am to 6pm** (weather permitting). A notification about work on Sundays, is attached to this email. Work on these Sunday's will include:

- installing new stormwater drainage
- building retaining walls
- tie-in work at Victoria Road for the new shared user path that will connect to the ANZAC Bridge

Key updates

- From **tomorrow Wednesday 22 July**, the left-turn into Quirk Street from Victoria Road will close to traffic. This closure is in response to feedback from local residents and will be in place until approximately October. From Thursday 23 July, a full road closure will also be in place on Quirk Street at Victoria Road between 6am and 6pm, as we carry out utility work at this location. The full road closure is expected to be in place each day for up to one month
- In line with recent NSW Government health advice regarding COVID-19 developments and to ensure the safety of the community and staff, **we are re-closing the Community Information Centre** at 84 Lilyfield Road Rozelle. Please do not hesitate to, please email us at info@rozelleinterchange.com.au with your enquiry and a contact number for us to call you.

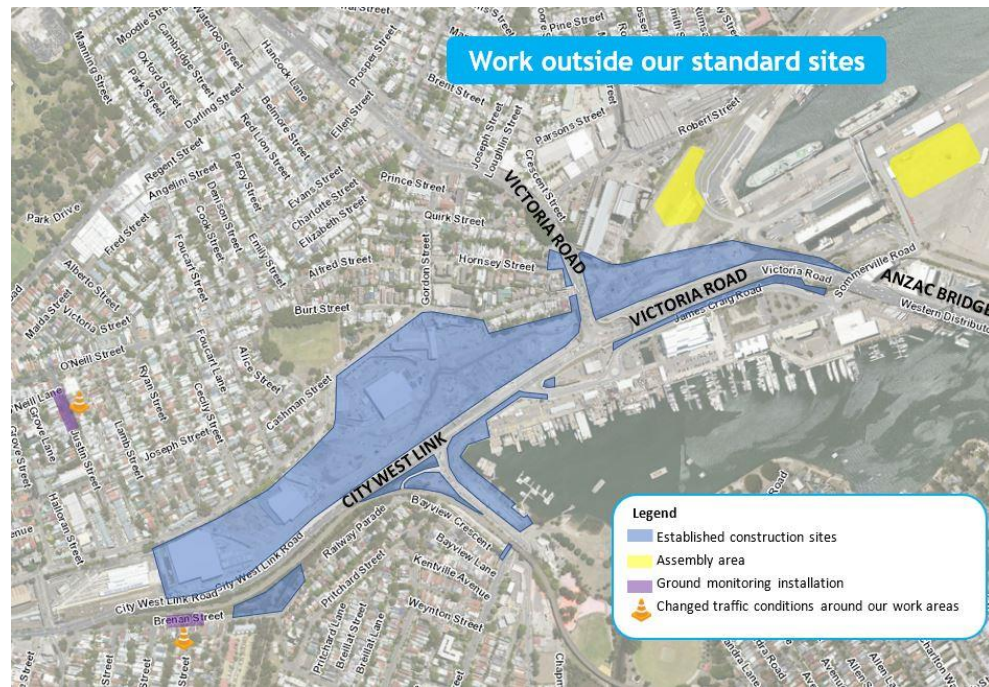
Work happening outside our sites

Ground monitoring equipment will be installed at the following locations next week (shown in purple on the map to the right) during standard construction hours **7am to 6pm Monday to Friday and 8am to 6pm on Saturdays**. The equipment is being installed ahead of tunnelling happening in the area (note, tunnelling may not be taking place at these exact locations):

- Justin Street between O'Neill and Joseph streets
- Brenan Street between Catherine Street and Railway Parade

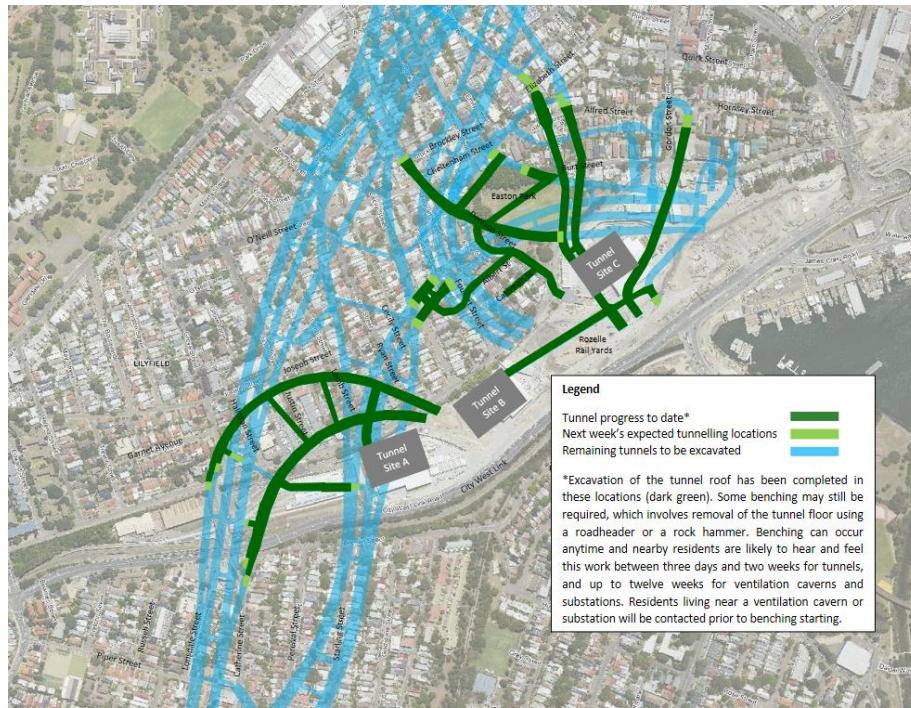
This work will involve pot holing, removal of material with vacuum truck, drilling, installing ground monitoring equipment, temporary parking removal, regrouting boreholes and reinstating the area. We expect to spend up to seven days at each location.

Work will start shortly (once final approvals are received) to **establish an assembly area at Glebe Island and White Bay** (shown in yellow on the map to the right). This area will be used to store and assemble equipment and materials before being transported to site for use. Access to the assembly area will be via James Craig Drive. Notification about this work is attached to this email



Weekly tunnel progress update

Tunnelling will continue 24/7 and next week's expected tunnelling locations are shown on the map below. Concrete deliveries and spoil haulage at the tunnel sites may occur outside standard construction hours; however, both are expected to have minimal, if any, noise impact to nearby residents.



Progress shots

Image below shows inside an excavated tunnel with temporary ventilation installed



Image below shows the foundations of the tunnel portals that will eventually connect City West Link with the M8



Construction FAQs

Hours of work

- Day work will be ongoing within our construction sites and in local streets during standard construction hours from 7am to 6pm Monday to Friday and **8am to 6pm on Saturdays**.
- Due to COVID-19 restrictions we are approved to undertake day work between **8am and 6pm on Sundays** to allow for social distancing to be observed.
- High noise work (rock hammering or saw cutting) will be carried out for three hours at a time before an hour respite is provided. High noise work will **finish at 1pm on Saturdays**. Please note that some activities such as piling, can be carried out until **6pm on Saturdays**
- Work that is not intrusive may be completed outside standard construction hours without notification. These activities may include security checks, oversized deliveries and other lower impact activities

- Tunnelling and tunnel support activities such as loading ground material into trucks and working inside the tunnel sheds, may happen 24/7.
- Night work is scheduled when traffic volumes are too high during the daytime and we don't have approval to work on the road. This typically applies to construction work on Victoria Road, City West Link and The Crescent. Night work can take place between 7pm and 6am Monday to Friday.

Equipment used

Equipment used for our work (day and night) includes but is not limited to: excavators, rock hammers, jack hammers, line marking removal machines, line marking machines, road saws, vacuum trucks, hand tools, compactors, concrete trucks, light vehicles, cranes, piling rigs, asphaltting machines and generators.

How we're mitigating impacts on Rozelle, Lilyfield and Annandale residents

Construction work may be impactful to those living nearby. We're trying to limit the impact by:

- changing our construction methodology to reduce the overall duration of high impact activities such as rock hammering, where possible
- scheduling work to happen during the day instead of at night, where possible
- installing noise blankets around our temporary work sites, and noise walls along our long-term construction boundaries
- adhering to the respite breaks during high impact activities (one hour break every three hours)
- using water suppression such as hoses, misters and sprinklers to limit the creation of dust during some activities

Communicating with you

In response to feedback from some residents we've made some changes to our weekly update. Going forward, each week on a Wednesday we'll send you an email outlining:

- night and weekend work scheduled for the next week
- key work taking place outside our site
- any key commuter updates
- tunnelling progress update

Once a month on a Wednesday, we'll provide you with a more thorough update of activities happening across our sites including some progress photos and any important maps.

Please be patient with us over the next few weeks as we implement these new updates. In the meantime, please feel free to provide any feedback you have about how the information is being received.

How to contact us

In line with recent NSW Government health advice regarding COVID-19 developments and to ensure the safety of the community and staff, we are **re-closing the Community Information Centre** at 84 Lilyfield Road Rozelle. Please do not hesitate to email us at info@rozelleinterchange.com.au with your enquiry and a contact number for us to call you.

If you want to know more about our work or to make a complaint, please **email us at** info@rozelleinterchange.com.au or contact the Rozelle Interchange Community Team on **1800 660 248**.

Kind regards

The Rozelle, Lilyfield and Annandale Community Relations Team