

Week starting 25 January 2021 (Update no. 266)

Good afternoon

Below is an overview of Rozelle Interchange construction work happening across Rozelle, Lilyfield and Annandale next week. We've separated the update into the following sections:

- a note about day work next week
- night work next week
- tunnelling update
- online web portal coming soon!

We encourage you to take the time to read the below information as it involves construction work or traffic changes that may impact you.

Congestion at Victoria Road/The Crescent intersection

You may have noticed at various times in the day, that there is additional congestion approaching the Victoria Road/The Crescent intersection. We've been undertaking work to complete the bus bay at Hornsey Street and demolish sections of the Victoria Road bridge which are resulting in daytime lane closures.

We've requested to carry out this work during the daytime instead of at night, to reduce the impact on nearby residents and the length of time it takes to complete this work. Traffic arrangements will continue to be monitored by the traffic authority to ensure the congestion remains manageable as traffic volumes return to normal after the holiday break.

There will be no work on our sites on Monday 25 and Tuesday 26 January. **Day work will resume on Wednesday 27 January.**

Construction work including tunnelling will stop from 6pm Saturday 23 January and resume next week after the Australia Day public holiday. Some low impact activities such as security checks or minor maintenance checks may still take place during this period.

Tunnelling activities will resume at 6am on Wednesday 27 January, while work above ground inside our sites and on the road will resume at 7am on Wednesday 27 January.



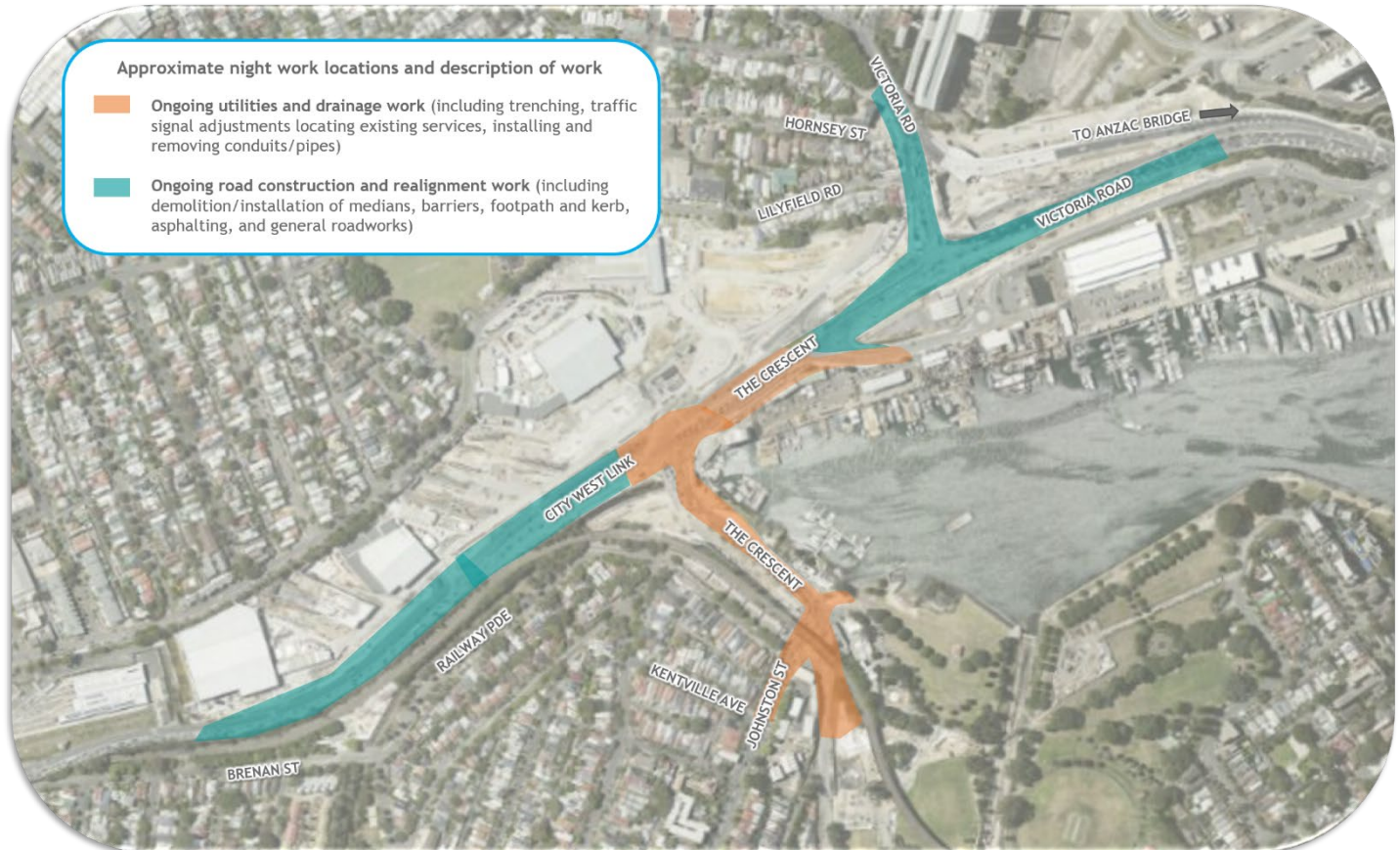
Night work next week

As per last Wednesday's update, we'd like to remind you that night work is scheduled for tomorrow night (Thursday 21 January).

Noisy night work next week will be carried out on Wednesday 27 and Friday 29 January (7pm to 6am) and is expected to create moderate to high noise that may be heard by nearby residents. We sincerely apologise for any disruption caused by noisy night work.

We've highlighted the approximate locations of night work next week in the map below. More detailed information about key activities will be featured in our area specific updates on Friday.

This work is subject to site and weather conditions and may need to be rescheduled. Please note that other activities which are non-intrusive (below a certain noise level) such as oversized deliveries, adjusting barriers and fencing and traffic control setup may occur outside of the highlighted areas and without notification.



Work is typically permitted to start on Victoria Road, City West Link and The Crescent from 10pm and every effort is made to complete the noisy activities as early as possible. Work in other locations, including the Glebe Island Assembly Area may be permitted to start earlier. For information about how we manage noise from our work, please take a look at the [Construction Fact Sheet](#).



Tunnelling update

Next week's expected tunnelling locations in Rozelle and Lilyfield are shown in the map below. This is a reminder that the project has approval to carry out tunnelling activities 24/7, including the removal of spoil (excavated material) from inside the tunnels. For more information about the tunnel locations and depths, please visit the online Tunnel Tool [here](#).



New tunnelling activities from Wednesday 27 January

Hammering under Easton Park: Extended hours

We'll start work to hammer out the tunnel floor inside one of the traffic tunnels under Easton Park during extended hours: **Monday to Saturday, 6.30am to 6pm**.

The hammering location is **shown in red on the map above**. For this work we'll use an excavator with a hammer attachment, which will progress in an easterly direction at about 5-6 metres per day. This work is expected to take about six weeks to complete and will unfortunately produce a repetitive tapping noise.

Weeknight spoil removal at future air intake shaft

We'll start to remove excavated material from the future air intake shaft on **weeknights from 6pm to 10pm**. The shaft is situated within the site opposite Easton Park as **shown in pink on the map**.

Equipment used for this work includes but is not limited to a crane, moxie and excavator. **This work is expected to generate minimal noise, however nearby residents may notice some lights within the site.**

The air intake shaft will eventually be used to draw fresh air into the ventilation tunnels underground. No air from inside the tunnels will exit via this shaft once the tunnels are operational. In its final state, a small ventilation intake building will remain above ground at approximately 6 metres high and 6 metres in diameter. It will be composed of timber-resin cladding with stainless steel cables for plant climbers and will blend in with surrounding vegetation.



New online web portal coming soon!

In the coming weeks we'll be rolling out our new online web portal to residents in Rozelle, Annandale and Lilyfield which will replace all existing work updates and notifications. You may have noticed that some of the heading colours and icons in today's update have changed as we've used the same ones you'll see for these activities in the portal.

Once we've switched to the new portal you'll continue to receive an email from us each Wednesday. This email will have a hyperlink for each work activity for you to view all construction information and work taking place across the project conveniently from any device. Other key features will include sending upcoming work directly to your device calendar and filtering information so that it's tailored to your needs.

At the moment the portal isn't populated with information about work in your area. However if you'd like to explore the site and see what's happening at Iron Cove, you can view the portal by clicking [here](#).

We're excited to share this portal with you and hope you've reminded your friends and neighbours to subscribe!



How to contact us

As always, we can be easily reached via email or by phone:

Email: info@rozelleinterchange.com.au

Phone: Call **1800 660 248** and ask to be put through to the Rozelle Interchange team.

We'll endeavour to resolve your complaint or answer your enquiry as quickly as possible, and you will receive a response from the project within five business days.



Construction FAQs

More information about standard construction rules can be found [here](#). This information includes:

- Hours of work
- Standard equipment used
- How we mitigate impacts to residents

Kind regards

The Community Relations Team