

#### Week starting 5 October 2020 (Update no. 180)

Good afternoon

Below is an overview of Rozelle Interchange construction work happening across Rozelle, Lilyfield and Annandale next week. We've broken the update into the following sections:

- reminder of night work this week (Thursday 1 and Friday 2 October)
- night work next week
- ANZAC Bridge Access Road now open
- upcoming changes to your route:
  - opening of Victoria Road Access Road late-October
  - pedestrian and cyclist changes in Rozelle late-October
- work in local streets
- tunnel progress update

Please note, there will be **no work across our above-ground construction sites from Saturday 3 October through to Monday 5 October (inclusive)** for the long weekend. **Work will recommence across our sites on Tuesday 6 October.** Most tunnelling activities will cease over the long weekend, however there will be some low noise activities happening inside some of the tunnels.

We aim to include relevant information in these weekly updates highlighting work or activities that may impact you, so we encourage you to take time to read the below details. We continue to thank you for your patience while we carry out construction work in this area.

#### Reminder, night work this week (Thursday 1 and Friday 2 October)

Night work will include:

- continuing work to install a new section of water main on Victoria Road near Quirk Street (up to three more weeks) and other utility services on The Crescent (ongoing). This will continue to be noisy work
- demolition of the former Beatrice Bush Bridge foundations on Victoria Road (approximately two more night shifts). This will continue to be noisy work

asphalting work on Victoria Road near Lilyfield Road (up to three more weeks). We expect this to be moderately noisy work

#### Night work next week

Next week noisy night work will be carried out on **Wednesday 7 October (7pm to 6am)** and **Thursday 8 October (7pm to 6am)**. We've highlighted the approximate locations of night work next week in the below map. Please note other activities such as traffic control setup may occur outside of the highlighted areas:

- mobilising/demobilising traffic control setup
- **utility work (ongoing):** trenching, locating existing services, installing conduits/pipes and traffic signal adjustments. Utility work on The Crescent and Johnston Street next week will continue if not completed this week. **Moderate to noisy work**
- **road construction (ongoing):** demolition/installation of medians and barriers, asphalting, milling and re-sheeting new road pavement, line-marking and line-marking removal and general roadworks. **Moderate to noisy work**
- backfilling and reinstatement of the work area.



The above night time activities will involve the intermittent use of road saws, rock hammers, asphaltting machines, rattle guns and linemarking removal equipment. These activities all create **moderate to high noise that may be heard by nearby residents** and every effort is made to complete these activities as early as possible. However, depending on the location of work (such as City West Link), we may not receive approval to start work on the road until 11pm which unfortunately delays the start and completion of the activity.

For information about how we manage noise from our work, please take a look at the [Construction Fact Sheet](#)

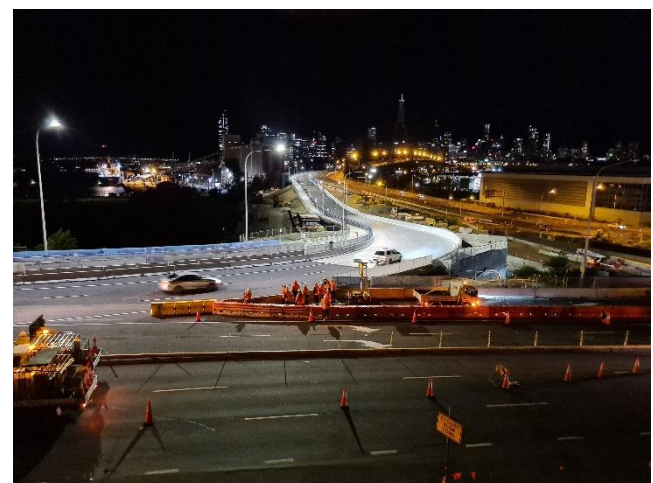
### Courtesy notice - night work on Victoria Road at Gordon Street

Please be advised that a separate subcontractor (LTJV) working for Transport for NSW, will be carrying out night work on Victoria Road at Gordon Street over four shifts, to upgrade the pedestrian crossing including installing bicycle lights and widening some of the existing kerb ramps. This work is scheduled to start next Wednesday 7 October and continue until Friday 23 October (over four nights).

### Opening of ANZAC Bridge Access Road

We opened the new ANZAC Bridge Access Road last Saturday. This road connects motorists travelling from Victoria Road to the ANZAC Bridge and will be in place for approximately two years while we demolish and rebuild The Crescent/ Victoria Road intersection in stages.

The image on the right shows the first cars to travel on the new road last Sunday morning. Victoria Road is in the foreground and the new turn off to ANZAC Bridge is shown in the background.






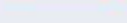




## Changes to your route in October - opening of Victoria Road Access Road

The next change for motorists will involve opening the **Victoria Road Access Road** in late **October**. This road will connect motorists coming from City West Link/The Crescent to Victoria Road, replacing the need to go through the existing intersection.

This will result in a major change for motorists who will be required to travel in different lanes to what they are used to between The Crescent/ City West Link and Victoria Road. Please refer to the map and table below to learn about the new traffic movements through this area. The orange in the map indicates the location where motorists need to be in new lanes:



Coming from	Travelling to	Traffic lane	Colour on map
The Crescent	Victoria Road	Move to the left lane on The Crescent	
The Crescent	ANZAC Bridge	Move to the right lane on The Crescent and continue straight through the intersection with James Craig Road	
City West Link	Victoria Road	Move to the left lane on City West Link	
City West Link	ANZAC Bridge	Move to the right lane on City West Link and continue straight through, at the intersection with James Craig Road	
James Craig Road	Victoria Road	Stay in the centre lane on James Craig Road on approach to the intersection with The Crescent, and continue through the lights towards the new Victoria Road Access Road	
James Craig Road	ANZAC Bridge	Move to the right lane on James Craig Road on approach to the intersection with The Crescent, and turn right at the lights to head under Victoria Road bridge	

Please note, **signalised intersections** will continue to operate at The Crescent/ City West Link and The Crescent/James Craig Road. When the Victoria Road Access Road opens, there will be a new signalised intersection at the location where it connects with Victoria Road.

Further information about traffic changes in October including changes to speed limits, will be provided in the weekly emails. We encourage you to familiarise yourself with the above map and traffic changes. For the latest traffic updates, you can call 132 701, visit [livetraffic.com](http://livetraffic.com) or download the Live Traffic NSW App.

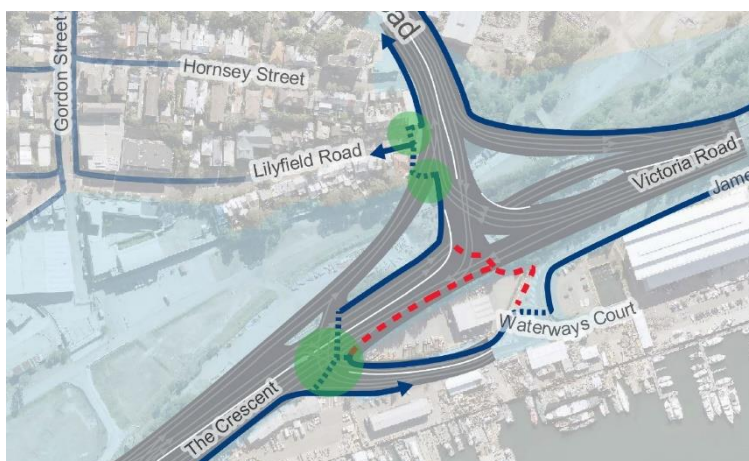
### Changes to your route in October - Pedestrian and cyclist changes on Victoria Road and The Crescent

At the same time, the last major change will happen for pedestrian and cyclists in Rozelle for a few months. The two-phased pedestrian crossing at the intersection of Victoria Road and The Crescent, will close and be moved to James Craig Road.

As a result, pedestrians and cyclists will follow a new shared path between traffic lanes on The Crescent shown in dark blue on the map to the right. They will then cross The Crescent at the shaded green area next to James Craig Road.

A new signalised intersection will also open at the junction of Lilyfield and Victoria roads, and also at the area where the Victoria Road Access Road meets Victoria Road both shown in green on the map to the right.

Further details about these changes will be provided closer to the date.



### Work in local streets next week

We'll continue work within the footpath and road on the corner of **Gordon Street and Lilyfield Road** to install conduits so that we can underground the powerlines at this location. We expect to finish this work over the next weeks. There will be changed traffic conditions at this intersection so please watch out for signage and follow instructions from traffic control personnel.

### Tunnelling update

We currently have 21 roadheader machines excavating the future Rozelle Interchange tunnels and have completed 22% of excavation.

Next week's expected tunnelling locations are shown in the map below. For more information about the tunnel locations and depths, please visit the online Tunnel Tool [here](#).

This is a reminder that the project has approval to remove excavated material 24/7 from inside the tunnels.





## Construction FAQs

For more information about standard construction rules, please click [here](#). This information includes:

- Hours of work
- Standard equipment used
- How we mitigate impacts to residents

## How to contact us

In line with recent NSW Government health advice regarding COVID-19 and to ensure the safety of the community and staff, we have temporarily closed the Community Information Centre at 84 Lilyfield Road Rozelle.

Please note, you cannot respond directly to this email. If you want to know more about our work or to make a complaint, please contact us on our contact details can be found below.