

Rozelle Interchange

WestConnex

Weekly work update | Rozelle, Lilyfield & Annandale

30 December 2020

Week starting 4 January 2021 (Update no. 226)

Dear residents

Happy New Year. We trust you enjoyed a happy and restful time over the holidays.

You're receiving this update as Rozelle Interchange construction work will resume next week from Monday 4 January 2021 (between 7am and 6pm), and noisy night work will be carried out on Thursday night next week.



Day work next week

Day work will resume from Monday 4 January within our construction sites and in local streets during standard construction hours (7am to 6pm Monday to Friday, and 8am to 6pm on Saturdays).

High impact noise activities, such as sheet piling, rock hammering and saw cutting, is carried out for three hours at a time before an hour respite is provided as per the table below.

Respite	High impact noise	Respite	High impact noise	Respite	High impact noise
7am - 8am	8am - 11am	11am - 12noon	12noon - 3pm	3pm - 4pm	4pm - 6pm

Note: High impact noise work will finish at 1pm on Saturdays

Activities which are not classified as high impact activities such as bored piling, excavation and concrete pours can be carried out continuously during standard construction hours.

We'll continue to provide detailed information about upcoming day work in your area in our Friday updates.



Night work next week





Noisy night work next week will be carried out on **Thursday 4 January 2021 (7pm to 6am)** and is expected to create moderate to high noise that may be heard by nearby residents. We sincerely apologise for this.

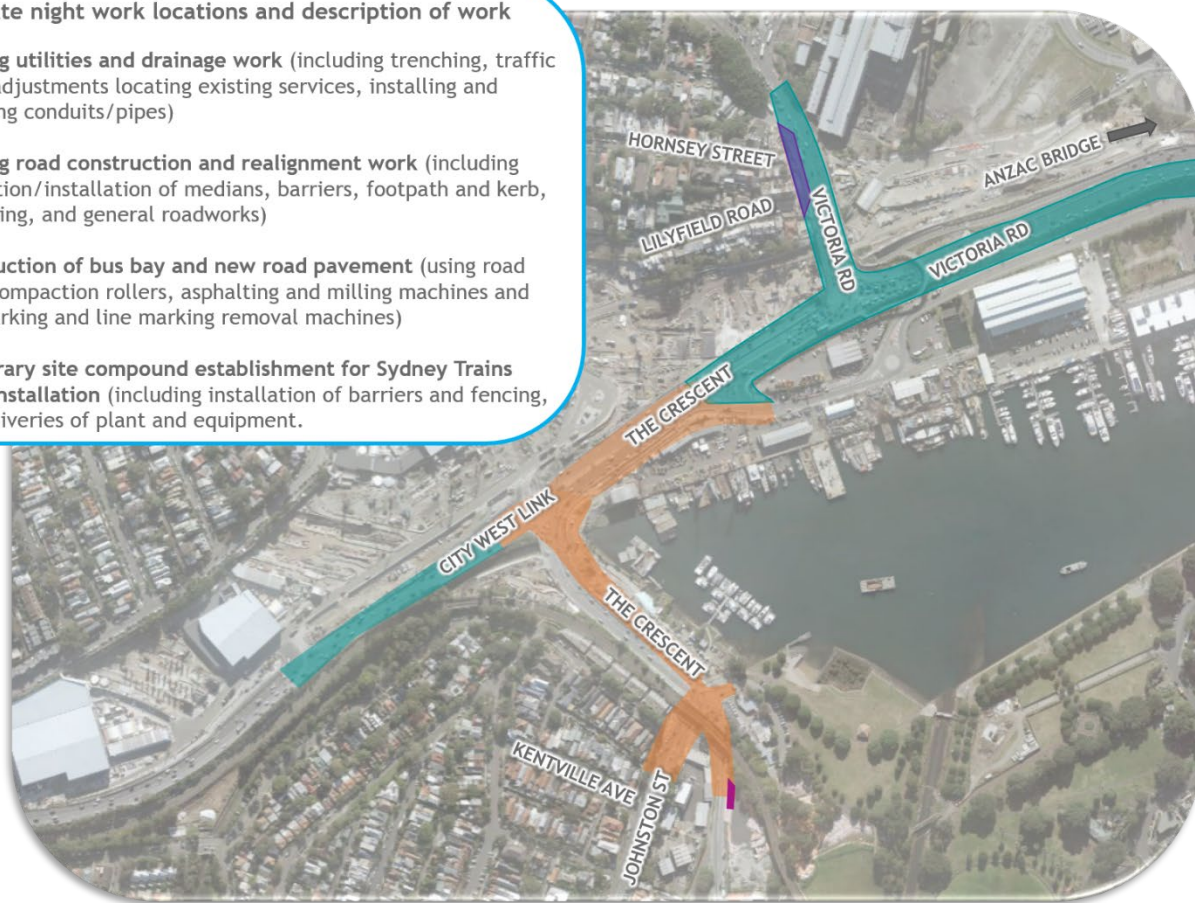
We've highlighted the approximate locations of night work next week in the map overleaf. Our ongoing night work activities next week include:

- mobilising/demobilising traffic control setup
- **utility and drainage work**
- **road construction and realignment work**
- backfilling, compacting and reinstating the work area at the end of the shift.

This work is subject to site and weather conditions and may need to be rescheduled. Please note that other activities which are non-intrusive (below a certain noise level) such as oversized deliveries, adjusting barriers and fencing and traffic control setup may occur outside of the highlighted areas.

Approximate night work locations and description of work

-  **Ongoing utilities and drainage work** (including trenching, traffic signal adjustments locating existing services, installing and removing conduits/pipes)
-  **Ongoing road construction and realignment work** (including demolition/installation of medians, barriers, footpath and kerb, asphaltting, and general roadworks)
-  **Construction of bus bay and new road pavement** (using road saws, compaction rollers, asphaltting and milling machines and line marking and line marking removal machines)
-  **Temporary site compound establishment for Sydney Trains cable installation** (including installation of barriers and fencing, and deliveries of plant and equipment).



Work is typically permitted to start on Victoria Road, City West Link and The Crescent from 10pm and every effort is made to complete the noisy activities as early as possible. Work in other locations, including the Glebe Island Assembly Area may be permitted to start earlier. For information about how we manage noise from our work, please take a look at the [Construction Fact Sheet](#).

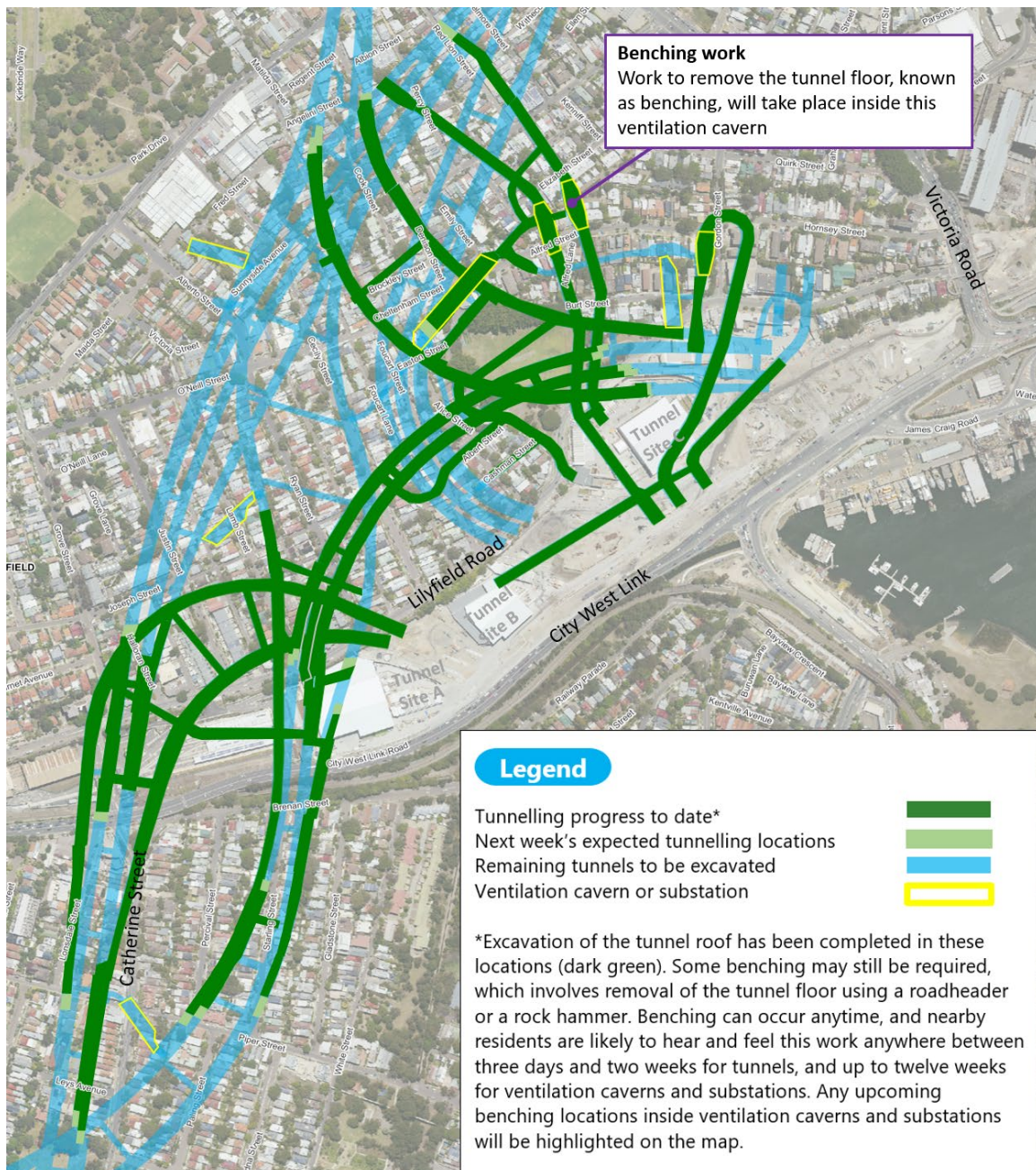


Tunnelling update

All 22 roadheaders will continue excavation of the future Rozelle Interchange tunnels in 2021. Next week's expected tunnelling locations in Rozelle and Lilyfield are shown in the map overleaf.

This is a reminder that the project has approval to carry out tunnelling activities 24/7, including the removal of spoil (excavated material) from inside the tunnels.

For more information about the tunnel locations and depths, please visit the online Tunnel Tool [here](#).



How to contact us

In line with recent NSW Government health advice regarding COVID-19 and to ensure the safety of the community and staff, the Community Information Centre at 84 Lilyfield Road Rozelle remains temporarily closed.

If you would like to know more about our work or to make a complaint, please contact us at the details provided below.

P: 1800 660 248

E: info@rozelleinterchange.com.au

We'll endeavour to resolve your complaint or answer your enquiry as quickly as possible, and you will receive a response from the project within five business days.



Community Information Centre re-opening

We're pleased to advise that **the Community Information Centre at 84 Lilyfield Road Rozelle will re-open from 9am Monday 11 January**, in line with recent NSW Government health advice easing COVID-19 restrictions.

The Community Information Centre is open from 9am to 5pm Monday to Friday (excluding public holidays).



Construction FAQ's

For more information about standard construction rules, please click [here](#). This information includes hours of work, standard equipment used and how we mitigate impacts to residents

Kind regards

The Community Relations Team