

Week starting 7 September 2020 (Update no. 166)

Good afternoon

Below is an overview of Rozelle Interchange construction work happening across Lilyfield, Rozelle and Annandale next week. We've broken the update into the following sections:

- reminder of night work this week
  - Night work and traffic changes on The Crescent tonight, Wednesday 2 September
  - Closure of ANZAC Bridge during the night, on Saturday 5 September
- night work next week
- tunnel progress update
- progress shots

We aim to include relevant information in these weekly updates highlighting work or activities that may impact you, so we encourage you to take time to read the below details. We continue to thank you for your patience while we carry out construction work in this area.

### Night work this week

#### Wednesday 2 September (tonight)

We'll be carrying out work on The Crescent to move the traffic lanes closer to Rozelle Bay. Please note this work will be noisy and involve a large number of personnel. Similar work was carried out last Saturday night on City West Link and The Crescent.

**Pedestrians and cyclists will travel on a new shared path and motorists will travel on a new section of road closer to Rozelle Bay from Thursday 3 September. At the same time, the footpath next to the mural will close with access to bus stop maintained. For more information about these changes please click [here](#)**

**The southbound bus stop on The Crescent (Stop ID 203811) will be relocated north towards the City West Link intersection on the new shared user path.**

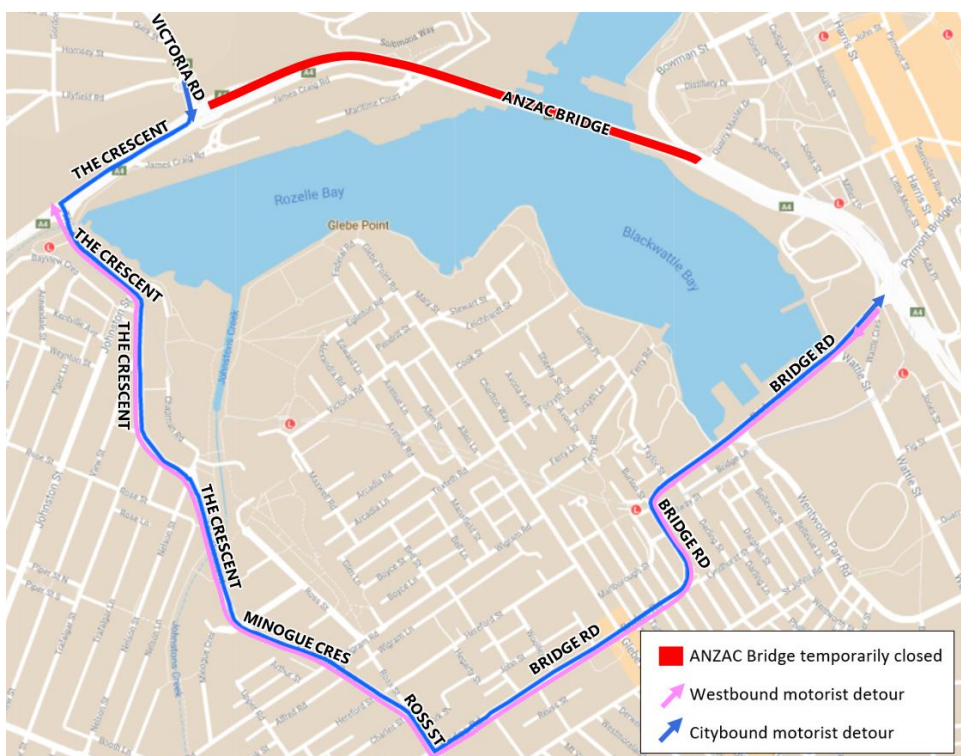
#### Saturday 5 September

We'll begin removing the Beatrice Bush Bridge over Victoria Road on approach to the ANZAC Bridge. As we're removing the centre span of the bridge we're required to temporarily close the ANZAC Bridge. Work will be postponed if we encounter high winds or heavy rain and we'll send an email on Saturday if the work is delayed. The following traffic changes will be in place on the night:

- reduced lanes and changed traffic conditions along Victoria Road and ANZAC Bridge between 8pm (Saturday) and 10am (Sunday)
- **closure of all westbound traffic lanes (heading away from city) on the ANZAC Bridge** between 1am and 5am on Sunday
- **closure of all eastbound lanes on Victoria Road leading to ANZAC Bridge** between 1am and 5am on Sunday
- one lane open for vehicles travelling eastbound along City West Link to ANZAC Bridge between 1am and 5am on Sunday
- detours will be in place on Victoria Road, City West Link, The Crescent and the Western Distributor on approach to the ANZAC Bridge

Significant delays are expected and we recommend you plan ahead, allow additional travel time, watch for signs and follow detours. We encourage local residents to avoid using the ANZAC Bridge if possible.

The following detour will be in place for motorists on the night between 1am and 5:30am.



### Night work next week

Next week noisy night work will be carried out on **Wednesday 9 September (7pm to 6am), Friday 11 September (7pm until 8am on Saturday) and Saturday 12 September (7pm until 10am on Sunday)**. We've highlighted the approximate locations of night work next week in the below map. Please note other activities such as traffic control setup may occur outside of the highlighted areas:

- mobilising/demobilising traffic control setup
- **utility work:** trenching, locating existing services, installing conduits/pipes and backfilling
- **median work, line marking removal**
- **asphalting:** demolition/installation of medians and barriers, milling and resheeting new road pavement
- **vegetation removal in the Light Rail corridor:** can only start once the light rail service is temporarily closed from 12am. Work will involve using petrol chainsaws
- **demolition of Beatrice Bush Bridge** saw cutting and using hand tools to remove sections of the bridge by crane. **This is the only noisy activity happening on Friday 11 and Saturday 12 September**
- **Traffic switches:** opening the ground to change traffic signals and relocate utilities, moving or installing new barriers and traffic islands, linemarking/linemarking removal, asphalting
- backfilling and reinstatement of the work area

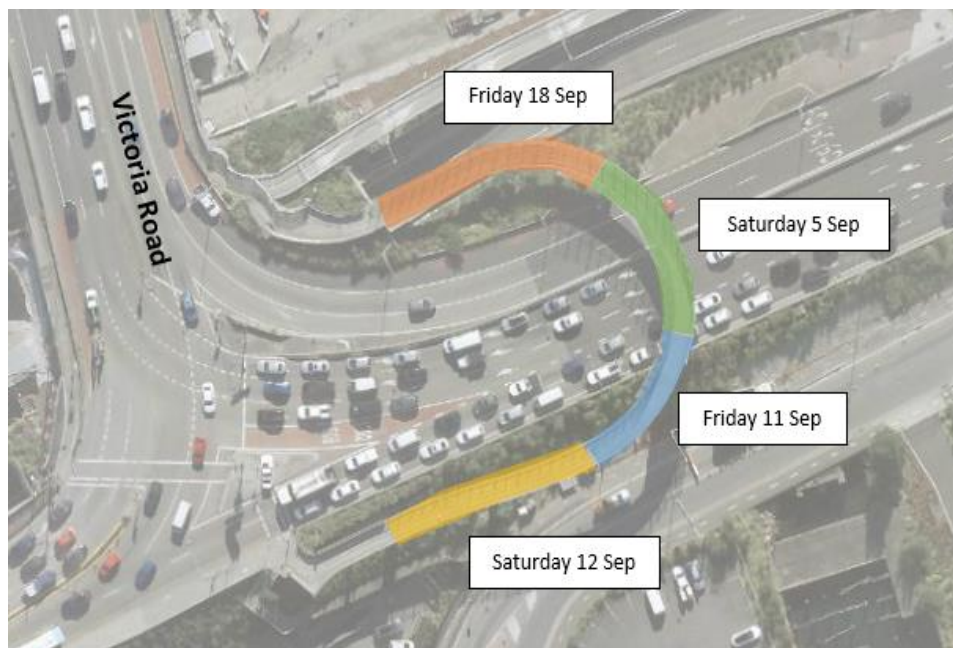


Each of the above night time activities will involve the intermittent use of road saws, rock hammers, chainsaws, asphaltting machines, cranes, rattle guns and linemarking removal equipment. These activities all create high noise that may be heard by nearby residents and every effort is made to complete these activities as early as possible. However, depending on the location of work (such as City West Link), we may not receive approval to start work on the road until 11pm which unfortunately delays the start and completion of the activity.

For information about how we manage noise from our work, please take a look at the Construction Fact Sheet

### Upcoming night work

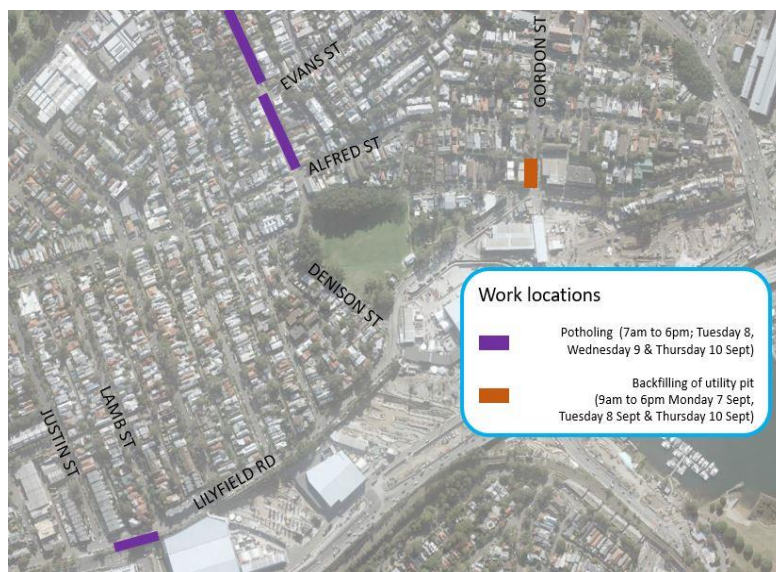
Following this night work, there will be one more shift required to remove the last section of the Beatrice Bush Bridge on Saturday 18 September. Once this has occurred, we'll start demolishing the supporting foundations and adjacent retaining walls near the bridge at night. We'll be using rock hammers to demolish these structures and as a result, we expect this work to be noisy.



### Work in local streets

Next week we'll be carrying out the following work in local streets of Rozelle on Monday 7, Tuesday, Wednesday 8 & Thursday 10 September:

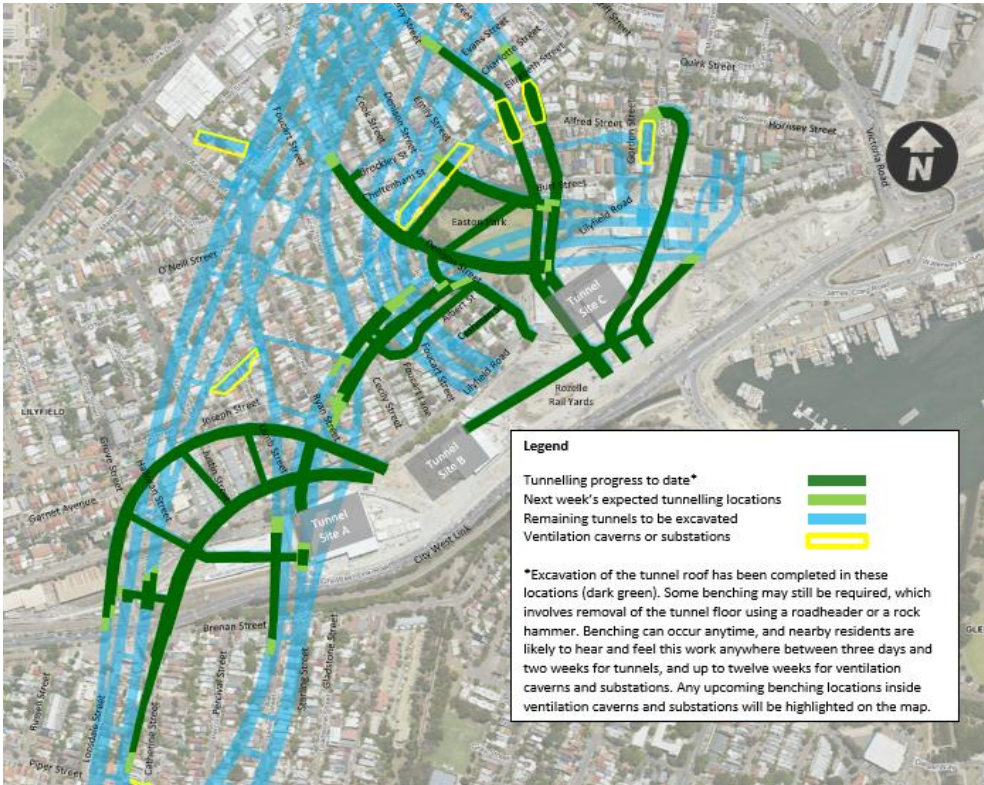
- Backfilling the utility pit at the corner of Gordon Street and Lilyfield Road (between 9am and 6pm. A stop/slow arrangement will be in place
- Investigating the location of utilities ahead of installing ground monitoring equipment between 7am and 6pm:
  - Denison Street between Evans and Albion streets: Full road closure with detour in place
  - Percy Street between Evans and Albion streets: Full road closure with detour in place
  - Lilyfield Road between Lamb and Justin streets: Stop/slow arrangement in place



## Tunnelling update

We currently have 21 roadheader machines excavating the future Rozelle Interchange tunnels. Next week's expected tunnelling locations are shown in the map below. For more information about the tunnel locations and depths, please visit the online Tunnel Tool [here](#).

This is a reminder that the project has approval to remove excavated material 24/7 from inside the tunnels.

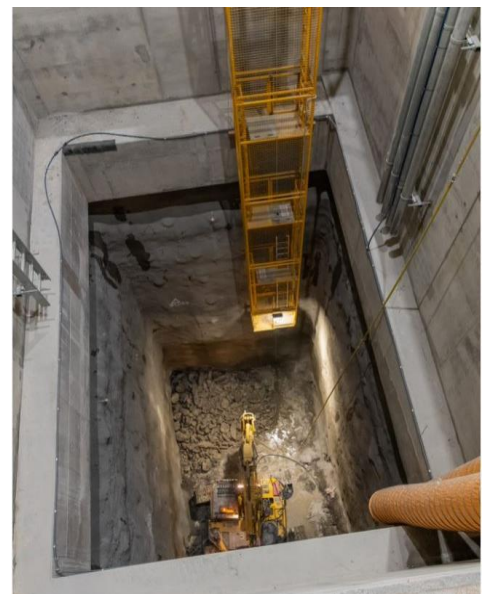


## Progress shots

Photo below shows construction of the Western Temporary Road



Inside one of the outtake ventilation shafts located at the Rozelle Rail



## Have you commented on our Urban Design and Landscape Plan?

Our virtual Community Centre for the Urban Design and Landscape Plan (UDLP) gives you access to the full UDLP, an interactive map, the Community Guide, virtual information sessions, make a formal submission and more.

[Click here to enter the virtual Community Centre](#)



The purpose of the UDLP is to provide a plan that outlines how open and green space for the community will be developed after completion of the Rozelle Interchange project. The Rozelle Parklands will provide community facilities such as new walking and cycling paths, and a wetlands with picnic areas, barbeques and playgrounds. This is your chance to help shape the development of one of the largest open areas in the inner city.

## Construction FAQs

For more information about standard construction rules, please click [here](#). This information includes:

- Hours of work
- Standard equipment used
- How we mitigate impacts to residents

## How to contact us

In line with recent NSW Government health advice regarding COVID-19 and to ensure the safety of the community and staff, we have temporarily closed the Community Information Centre at 84 Lilyfield Road Rozelle.

Please note, you cannot respond directly to this email. If you want to know more about our work or to make a complaint, please email us at [info@rozelleinterchange.com.au](mailto:info@rozelleinterchange.com.au) or contact the Rozelle Interchange Community Team on **1800 660 248**.