

## UPDATED: Weekly work update | Rozelle, Lilyfield & Annandale

Week starting 26 October 2020 (Update no. 190)

*\*You may need to wait momentarily for the images to load*

Good evening

Work to open the new Victoria Road Access Road has been **cancelled tonight** due to wet weather conditions impacting the ability to complete line marking. Night work to open the road is re-scheduled for next **Friday 30 or Saturday 31 October** (contingency night required in case we encounter wet weather again). The new road will open the morning after the night work.

We've updated the weekly update below to reflect the new dates.

Below is an overview of Rozelle Interchange construction work happening across Rozelle, Lilyfield and Annandale next week. We've broken the update into the following sections:

- night work next week
- Victoria Road Access Road opening and Lilyfield Road partially re-opening
- tunnel progress update

We continue to thank you for your patience while we carry out construction work in the area.

### Night work next week

Next week noisy night work will be carried out between 7pm and 6am on **Tuesday 27, Thursday 29 and Friday 30 (or Saturday 31 October if we encounter wet weather)**. We've highlighted the approximate locations of night work next week in the below map. Please note other activities such as traffic control setup may occur outside of the highlighted areas:

- mobilising/demobilising traffic control setup
- **utility work (ongoing)**: trenching, locating existing services, installing conduits/pipes and traffic signal adjustments
- **final tie-in adjustments once the Victoria Road Access Road is open**: asphaltting, milling and re-sheeting, concrete barrier movements, traffic signal adjustments at the intersections, line marking, line marking removal and other general roadwork activities
- **road construction (ongoing)**: demolition/installation of medians, barriers, footpath and kerb, asphaltting, milling and re-sheeting new road pavement, line-marking and line-marking removal and general roadworks
- backfilling and reinstatement of the work area.





The above night time activities will involve the intermittent use of road saws, rock hammers, asphaltting machines, rattle guns and linemarking removal equipment. These activities particularly when opening the new road, are expected to create **moderate to high noise that may be heard by nearby residents**. Work is typically permitted to start on Victoria Road, City West Link and The Crescent from 10pm at night and every effort is made to complete the noisy activities as early as possible.

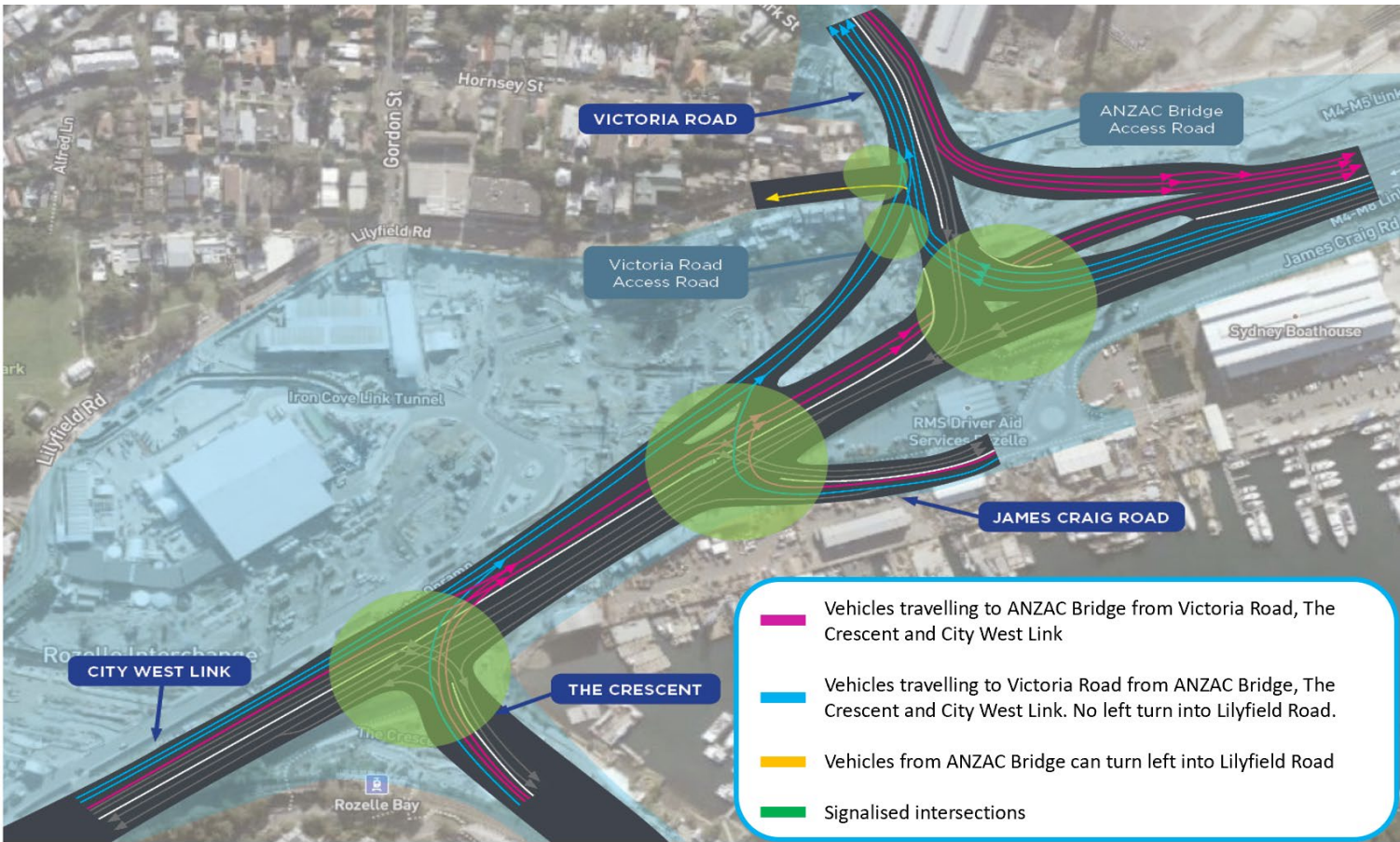
For information about how we manage noise from our work, please take a look at the [Construction Fact Sheet](#).

Important changes to your route next weekend

The last round of motorist changes for some time in Rozelle are scheduled to happen **next weekend** and will include:

- opening the Victoria Road Access Road (between The Crescent/City West Link and Victoria Road). This will be a **major change**. Drivers will need to take different lanes to access Victoria Road and the ANZAC Bridge
- partially re-opening Lilyfield Road to traffic:
  - vehicles travelling from the ANZAC Bridge **can turn left** into Lilyfield Road
  - vehicles coming from the Victoria Road Access Road (The Crescent or City West Link) **cannot turn left** into Lilyfield Road
  - no left out of Lilyfield Road onto Victoria Road
  - a new signalised intersection will be in place across Lilyfield Road at Victoria Road for pedestrians and cyclists
  - vehicles coming from City West Link or The Crescent are encouraged to use Balmain Road, Evans or Darling streets to access the Rozelle/Lilyfield area

The below map and tables detail the traffic lanes/movements drivers will need to take next weekend:



From ANZAC Bridge to	Traffic movements	Colour on map
Victoria Road	No change	<span style="color:blue">—</span>
Lilyfield Road	Left turn permitted into Lilyfield Road	<span style="color:yellow">—</span>
The Crescent/City West Link	No change	<span style="color:blue">—</span>

From The Crescent to	Traffic movements	Colour on map
Victoria Road	Move to the left lane on The Crescent and through the intersection with City West Link onto the Victoria Road Access Road	<span style="color:blue">—</span>
Lilyfield Road	No left turn into Lilyfield Road Continue on Victoria Road to Evans or Darling Streets	<span style="color:blue">—</span>
ANZAC Bridge	Move to the right lane on The Crescent and through the intersection with James Craig Road towards the ANZAC Bridge	<span style="color:pink">—</span>

From James Craig Road to	Traffic movements	Colour on map
Victoria Road	Move to the centre lane on James Craig Road on approach to the intersection with The Crescent, continue through the lights onto the new Victoria Road Access Road.	<span style="color:blue">—</span>
Lilyfield Road	No left turn into Lilyfield Road Turn left onto The Crescent/City West Link to Balmain Road or Victoria Road to Evans or Darling Streets.	<span style="color:blue">—</span>
ANZAC Bridge	Move to the right lane on James Craig Road on approach to the intersection with The Crescent and turn right at the lights	<span style="color:pink">—</span>

From City West Link to	Traffic movements	Colour on map
Victoria Road	Move to the left lane on City West Link and continue left onto the Victoria Road Access Road	<span style="color:blue">—</span>
Lilyfield Road	No left turn into Lilyfield Road Continue on Victoria Road to Evans or Darling Streets	<span style="color:blue">—</span>
ANZAC Bridge	Move to the right lane on City West Link and continue straight at the intersections with The Crescent and James Craig Road	<span style="color:pink">—</span>

Why can't cars turn left into Lilyfield Road from the Victoria Road Access Road?

This is due to the traffic signal phasing at the new signalised pedestrian and cyclist crossing on Lilyfield Road at Victoria Road. Pedestrians and cyclists will be crossing Lilyfield Road when cars from the Victoria Road Access



Road are moving to Victoria Road. Cars would need to wait for pedestrians and cyclists to cross Lilyfield Road resulting in a delay to traffic on the Victoria Road Access Road, potentially causing significant delays to the local traffic network. Barriers and signage will be in place to deter motorists from making the left turn.

In order to provide you with clear and detailed information about these changes, please look out for separate emails this week titled 'Important changes to your route'

What’s happening inside the Annandale sites

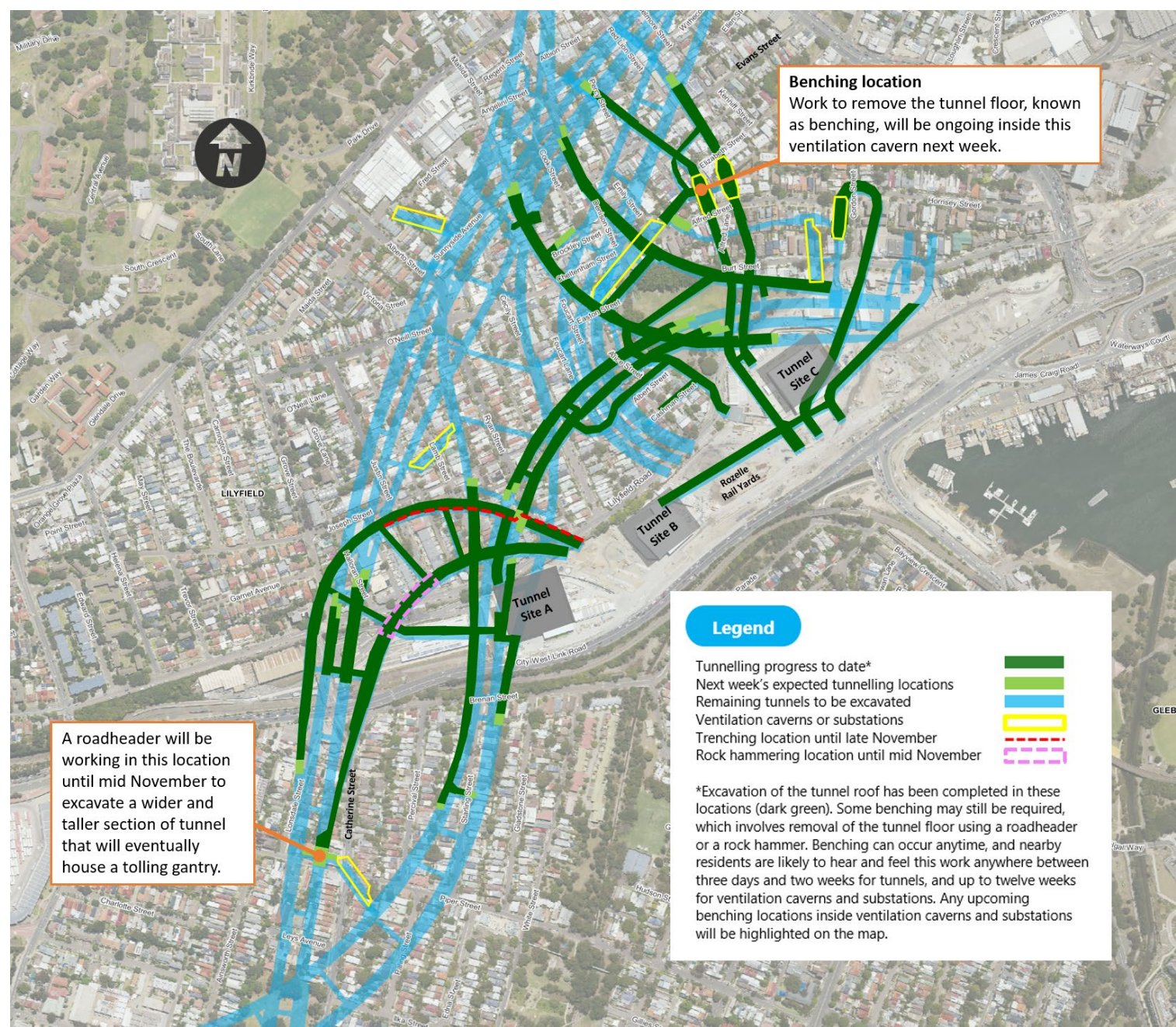
A light rail shutdown is scheduled from midnight Friday 30 October to 6am Monday 2 November. Information about the Rozelle Interchange work we'll be doing during this shutdown, including tree removal on Johnston Street is included in the attachment.

Tunnelling update

We currently have 21 roadheader machines excavating the future Rozelle Interchange tunnels. The project’s final roadheader (number 22) was assembled at our Iron Cove construction site last week and will start excavation tomorrow. This marks the start of peak tunnelling operations for the Rozelle Interchange, with nearly 25% of excavation complete.

Next week's expected tunnelling locations in Rozelle and Lilyfield are shown in the map below. For more information about the tunnel locations and depths, please visit the online Tunnel Tool [here](#).

This is a reminder that the project has approval to remove excavated material 24/7 from inside the tunnels.



Construction FAQs

For more information about standard construction rules, please click [here](#). This information includes:

- Hours of work
- Standard equipment used
- How we mitigate impacts to residents



## How to contact us

In line with recent NSW Government health advice regarding COVID-19 and to ensure the safety of the community and staff, we have temporarily closed the Community Information Centre at 84 Lilyfield Road Rozelle.

Please note, you cannot respond directly to this email. If you want to know more about our work or to make a complaint, please contact us on our contact details found below.

Kind regards

The Community Relations Team

### Apply for a community grant

Eligible community groups can apply for a grant up to \$10,000 to deliver initiatives that provide long-term benefits to local communities. To view the guidelines and complete your application online visit [www.westconnex.com.au/community/community-grant-program](http://www.westconnex.com.au/community/community-grant-program)

**WestConnex**

Transurban

Submit your application from 12 October to 6 November 2020

Rozelle Interchange  
**WestConnex**

1800 660 248  
[info@rozelleinterchange.com.au](mailto:info@rozelleinterchange.com.au)  
[westconnex.com.au](http://westconnex.com.au)

