

John Holland and CPB Contractors have been contracted by Transport for New South Wales to construct the new Rozelle Interchange (Stage 3B of WestConnex).

This fact sheet outlines some general information about the rules and standard practices for how we conduct our construction work. These rules and practices have typically been defined by the Project's Infrastructure Approvals (Department of Planning, Industry and Environment) and the Project's Environmental Protection Licence (Environmental Protection Authority).

Please find details of our hours of operation below, and information on construction noise, noise mitigation and frequently used equipment on the next page.

### Day work

Mon to Fri 7am - 6pm  
Sat 8am - 6pm

### Night work

Mon to Fri 7pm - 6am


Why do we work  
at night?


We are approved to  
schedule work up to  
three nights  
per week.  
Work can take  
place on two  
consecutive nights  
before a respite  
night is taken.

How to  
contact us


## Hours of operation


**Day work** will be ongoing within our construction sites and in local streets during standard construction hours:

 7am to 6pm Monday to Friday

 8am to 6pm on Saturdays

The Project also carries out **night work** between the hours of 7pm and 6am Monday to Friday. Work is scheduled at night on arterial roads for the following reasons:

 when traffic volumes are significantly lower than during the day and there is less impact to traffic flow.

 when we're undertaking work on various utilities and can only work at the availability and requirements of the utility owner (such as Ausgrid and Sydney Water)


 in cases where emergency work is required

Approval to work on arterial roads is typically not granted until 9pm when peak hour traffic has reduced, after which time the foremen need to setup traffic control. This means that some of **our night work may not begin until after 10pm.**

Under special circumstances we may receive approval to work **extended night-time hours** or work on the weekend to complete a large amount of work in one night (such as a major switch of the traffic alignment on or demolishing bridge structures).

There are a number of ways you can contact us. For further information or to make a complaint please email, phone or visit us:

 [info@rozelleinterchange.com.au](mailto:info@rozelleinterchange.com.au)

 1800 660 248

 The Community Information Centre is located at **84 Lilyfield Road, Rozelle.** It is open from 9am to 5pm, Monday to Friday.

## Construction noise

### What causes high noise?

Unfortunately noise is often an unavoidable by-product of construction work and can often include high noise activities such as saw cutting of the road and rock hammering.

Where we can, we try to mitigate noise, vibration and other impacts on residents by:



scheduling work during the day instead of at night



installing noise blankets around our temporary work sites and turning off equipment when not in use



respite breaks during high impact activities (one hour break every three hours).



changing our construction methodology to reduce the overall duration of high impact work activities.

### How we mitigate noise

### High noise work on weekends

High noise work will finish at **1pm on Saturdays**. Please note that some lower impact activities can be carried out continuously until 6pm on Saturdays.

### Quiet work

Work considered to be non-intrusive (below a certain noise level) can be completed outside standard construction hours without notification. These activities may include security checks, oversized deliveries and other lower impact activities.

### Tunnelling noise

Tunnelling and tunnel support activities such as loading ground material into trucks and working inside the tunnel sheds are approved to take place **24/7**.

## Equipment you might see

Equipment used for our work includes but is not limited to: excavators, rock hammers, jack hammers, line marking/line marking removal machines, road saws, vacuum trucks, hand tools, compactors, concrete pumps and trucks, light vehicles, cranes, piling rigs, asphaltting machines, vibratory rollers and generators. Some of these machines are pictured below.



*Excavators can be used to move material, or can be used with a rock-hammering attachment*



*Vacuum trucks are used to suck up soil, small stones and water around the area of work*



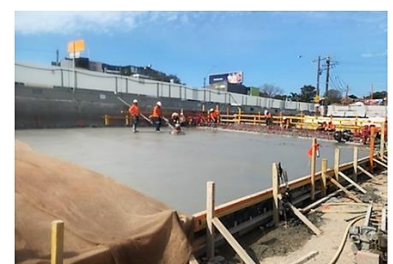
*Vibratory rollers are used to compact and smooth new asphalt*



*Line marking machines paint traffic signals on the new road*



*A concrete pump moves wet concrete from the agitator to the pre-installed steel framework*



*Hand tools are used to form and smooth wet concrete in new roads and structures*