

Week starting 17 August 2020 (Update no. 149)

Good afternoon

Below is an overview of Rozelle Interchange construction work happening across Lilyfield, Rozelle and Annandale next week. In August, September and October, there will be some key changes to your commute in Rozelle and Annandale whether you're a pedestrian, cyclist or motorist. In an effort to provide clear and detailed information about these changes, a separate email will be sent this afternoon titled [Important changes to your route](#). Please look out for it.

We recognise that we're sending a lot of emails this week as a number of key project updates are announced. We appreciate that residents prefer consolidated emails from the project and will endeavour to do this with our regular updates where possible.

**Night work next week**

Noisy night work will be carried out on **Monday 17, Tuesday 18 and Thursday 20 August** between the hours of **7pm and 6am** (weather permitting).

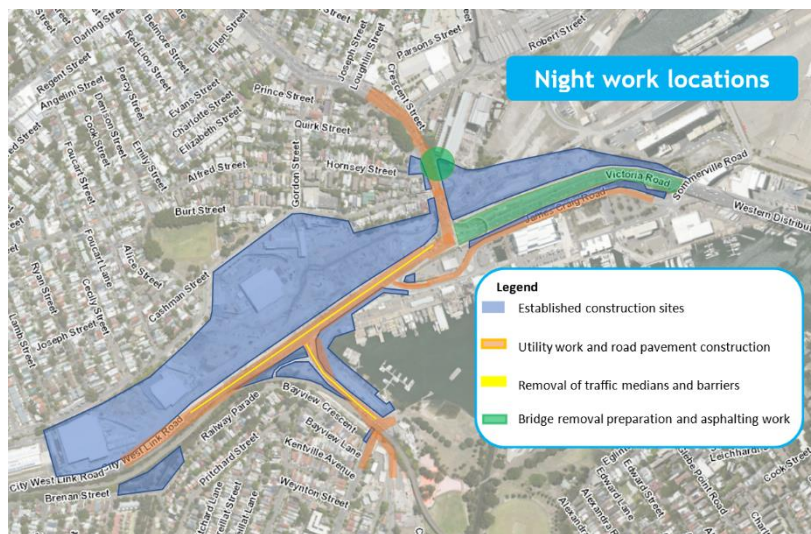
If work cannot take place on these nights, a contingency night may be used on Wednesday 19 August. We'll advise you via email if a contingency night is required.

If required, we'll notify you of other changes to the August night work calendar in these weekly updates.

August planned night work calendar						
Monday	Tuesday	Wednesday	Thursday	Friday	Saturday	Sunday
					1	2
3	4	5	6	7	8	9
10	11	12	13	14	15	16
17	18	19	20	21	22	23
24	25	26	27	28	29	30
31	September					
	1	2	3	4	5	6

Night work next week will include:

- mobilising/demobilising traffic control setup
- **utility and drainage work and adjustments to traffic control signals;** trenching, locating existing services, installing conduits/pipes and backfilling (involve saw cutting, rock hammering and vacuum excavation)
- **road pavement construction;** laying new sections of road and connections with existing road pavements (involving saw cutting, rock hammering, concrete work, asphaltting, line marking and the use of a milling machine to remove the top layers of the road surface)
- **preparation for the closure of Beatrice Bush Bridge;** removing some handrails and pavement and installing anchors (involving rattle guns, saw cutting)
- backfilling and reinstatement of the work area

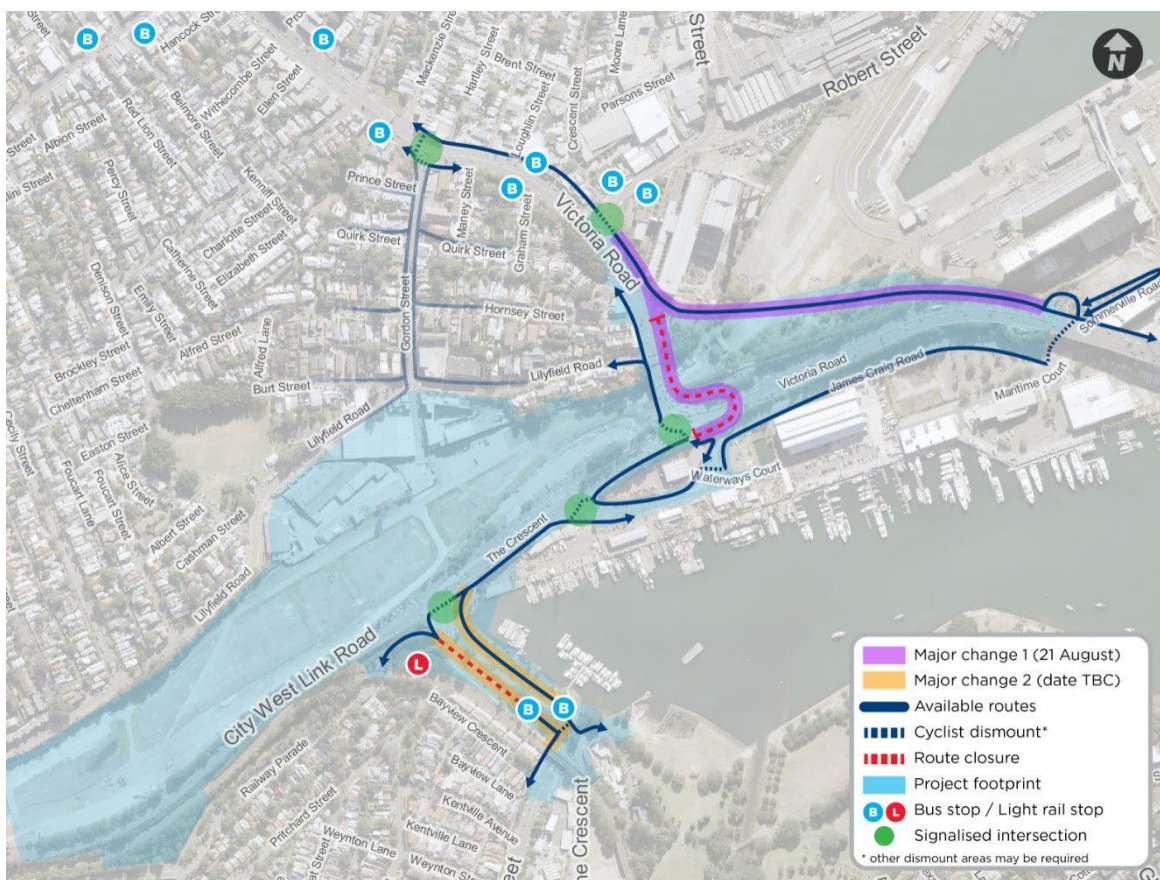


**High noise activities** such as barrier demolition, asphaltting, road sawing and rock hammering may be required on each of these nights at the locations shown below. As a result, night work next week is expected to generate high levels of noise.

### Key updates

- A separate email titled [Important changes to your route](#) will be sent this afternoon. A notification about these changes can also be found here. Important to note, from Friday 21 August there will be two key changes to pedestrian and cyclist connectivity in Rozelle:
  - a new pedestrian and cyclist shared path will open between Victoria Road and ANZAC Bridge. Pedestrians and cyclists will have direct access to and from ANZAC Bridge from the Balmain side of Victoria Road (south of Robert Street)
  - The Beatrice Bush Bridge (horseshoe bridge over City West Link) will be permanently closed, and the structure removed in stages in the weeks following. This bridge will not be replaced.

These changes are shown in purple on the map below



### The Urban Design and Landscape Plan is now on public exhibition



The Urban Design and Landscape Plan (UDLP) is now open for viewing and formal submissions through our interactive portal which includes a virtual Community Centre. You can view the full plan, access the interactive map, read through the Community Guide, watch a virtual information session, register your feedback and more.

The UDLP outlines how open and green space for the community will be developed upon completion of the Rozelle Interchange Project. A key feature of the UDLP includes transformation of the Rozelle Rail Yards into an open green space of up to 10 hectares, similar in size to Victoria Park near Sydney University. This former inaccessible industrial land will become a community park, leaving a positive legacy for generations of residents.

[Click here to enter the virtual Community Centre](#)





## Tunnelling update

We currently have 17 roadheader machines excavating the future Rozelle Interchange tunnels. Next week's expected tunnelling locations are shown in the map below. For more information about the tunnel locations and depths, please visit the online Tunnel Tool [here](#).

### Courtesy notice: benching under Alfred and Elizabeth streets

On Thursday 13 August we'll start work to remove the tunnel floor inside one of the ventilation caverns under Alfred and Elizabeth streets, as shown in orange on the map below. This activity is known as benching.

Due to the height inside the cavern (21.5 metres), we expect to be benching in this location for eight weeks in total; approximately two weeks from Thursday 13 August and another six weeks later in the year. Noise and vibration impacts from benching will be similar to previous tunnelling activities in the area. Please note this activity was originally scheduled to start on Monday 10 August and has been postponed.

Benching inside traffic tunnels, ventilation tunnels and cross passages can occur anytime after excavation of the tunnel roof has been completed. Benchng inside these types of tunnels can take anywhere between three days and two weeks. Unfortunately it is hard for us to provide a timeframe for benching inside these tunnels as it can occur anytime a roadheader or rockhammer is available.



## Construction FAQs

For more information about standard construction rules, please click [here](#). This information includes:

- Hours of work
- Standard equipment used
- How we mitigate impacts to residents

## How to contact us

In line with recent NSW Government health advice regarding COVID-19 and to ensure the safety of the community and staff, we are re-closing the Community Information Centre at 84 Lilyfield Road Rozelle. For any information you may require, please email us at [info@rozelleinterchange.com.au](mailto:info@rozelleinterchange.com.au) with your enquiry and a contact number for us to call you.

If you want to know more about our work or to make a complaint, please **respond to this email** or contact the Rozelle Interchange Community Team on **1800 660 248**.

Kind regards  
Carla, Laura and Eleanor

**The Community Relations Team**