

Rozelle Interchange

WestConnex

Weekly work update | Rozelle, Lilyfield & Annandale

13 January 2021

Week starting 18 January 2021 (Update no. 254)

Good afternoon

Below is an overview of Rozelle Interchange construction work happening across Rozelle, Lilyfield and Annandale next week. We've separated the update into the following sections:

- reminder that the new bus stop on Victoria Road at Hornsey Street will open on Friday
- night work next week
- tunnelling update
- what's new this year in the Railyards

We encourage you to take the time to read the below information as it involves construction work or traffic changes that may impact you.



REMINDER: Bus stop at Hornsey Street opening 15 January

This bus stop, shown in the map on the right, opens on Friday 15 January and service the following bus routes:

433 Balmain	501 West Ryde
502 Five Dock	503 Drummoyne
504 Chiswick	505 Woolwich
506 Macquarie Uni via East Ryde	
507 Macquarie Uni via Putney	
515 Eastwood	518 Macquarie Uni
520 Parramatta	M52 Parramatta

The existing bus stop on Victoria Road before Maney Street (Stop ID 203921) will remain in operation.





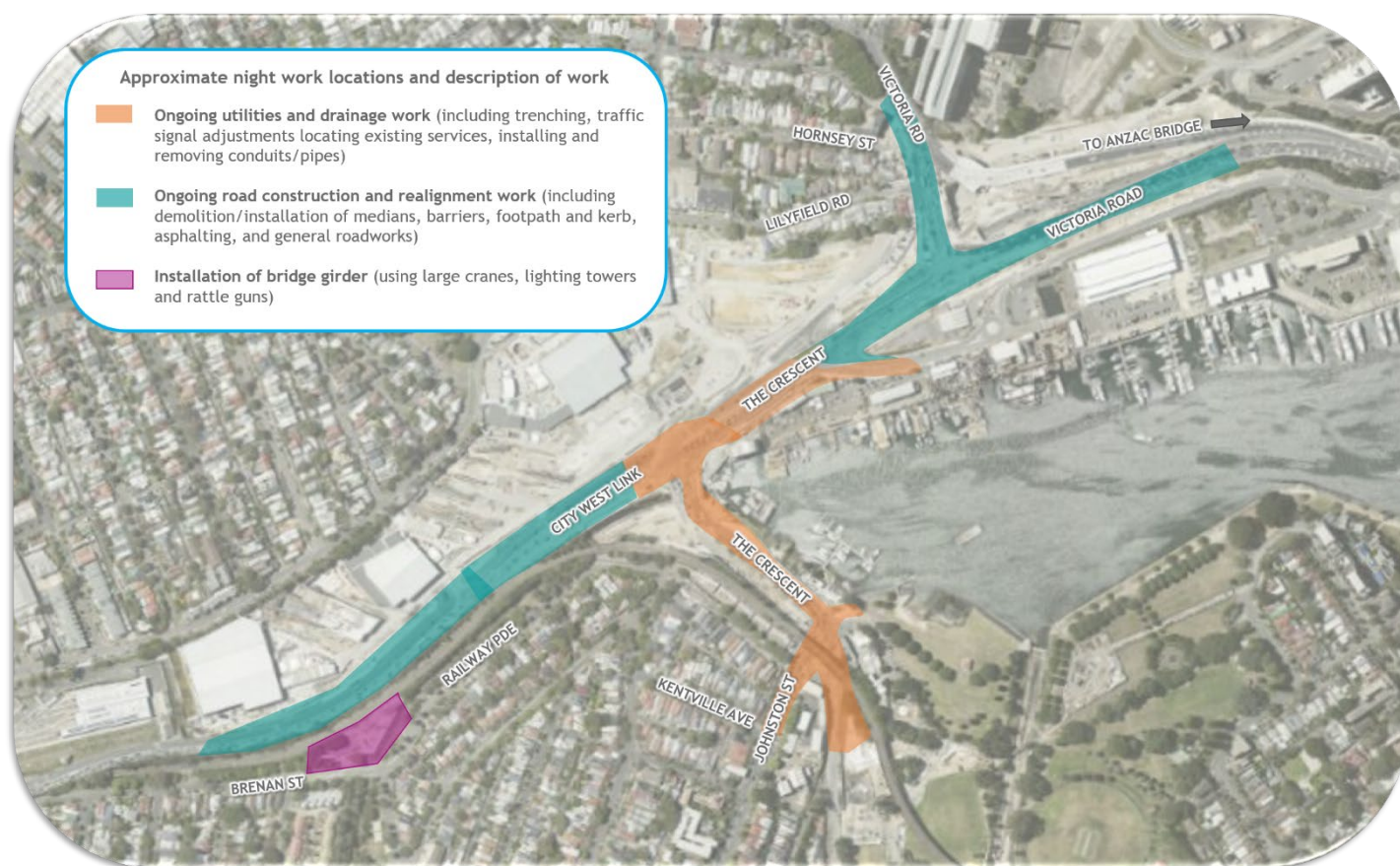
Night work next week

As a courtesy, we'd like to remind you that night work is scheduled for this Friday night, 15 January as per last Wednesday's notification.

Noisy night work next week will be carried out on Monday 18, Tuesday 19 and Thursday 21 January (7pm to 6am) and is expected to create moderate to high noise that may be heard by nearby residents. We sincerely apologise for any disruption caused by noisy night work.

We've highlighted the approximate locations of night work next week in the map below and more detailed information about key activities will be featured in our area specific updates on Friday.

This work is subject to site and weather conditions and may need to be rescheduled. Please note that other activities which are non-intrusive (below a certain noise level) such as oversized deliveries, adjusting barriers and fencing and traffic control setup may occur outside of the highlighted areas and without notification.



Work is typically permitted to start on Victoria Road, City West Link and The Crescent from 10pm and every effort is made to complete the noisy activities as early as possible. Work in other locations, including the Glebe Island Assembly Area may be permitted to start earlier. For information about how we manage noise from our work, please take a look at the [Construction Fact Sheet](#).

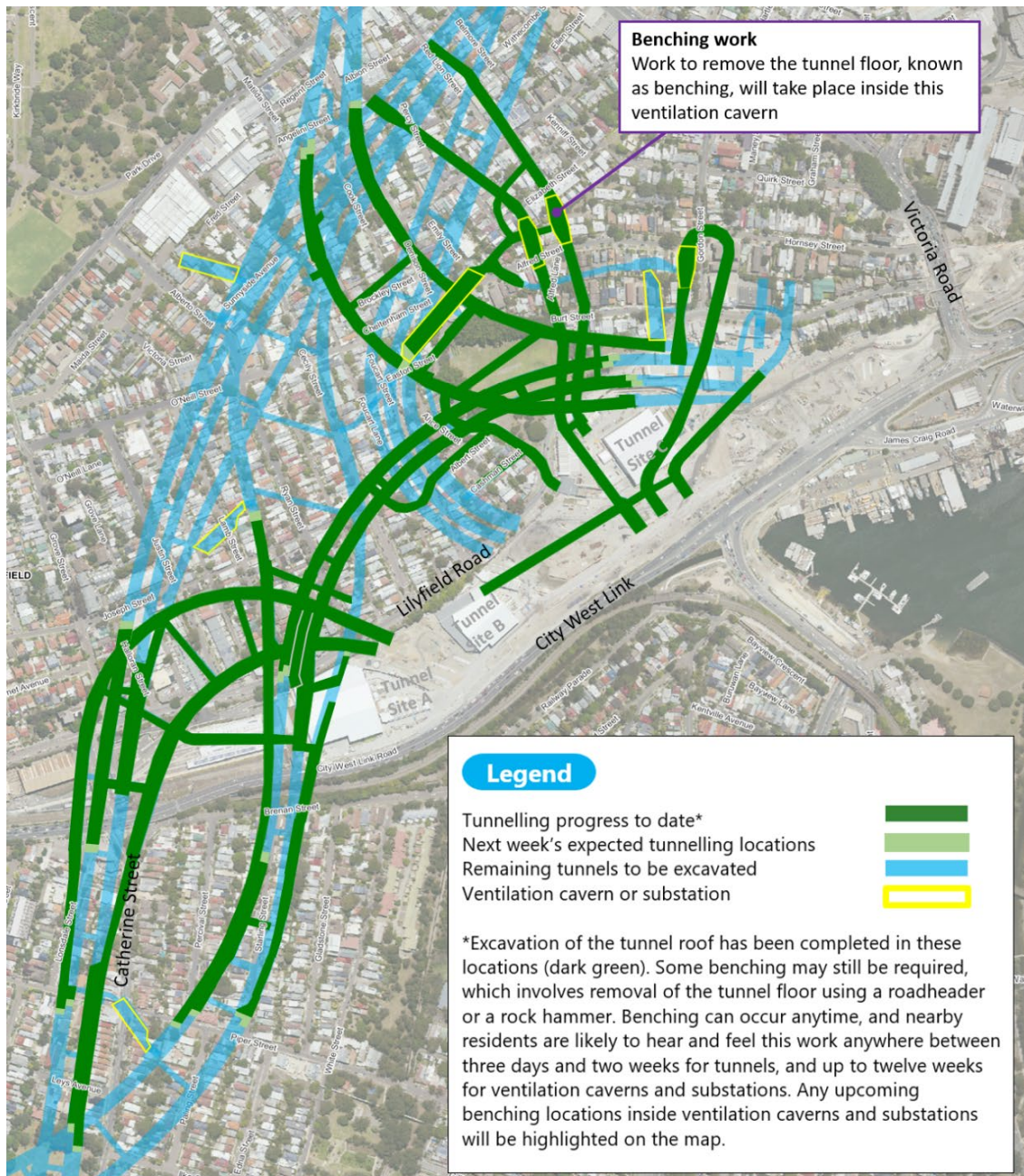


Tunnelling update

Next week's expected tunnelling locations in Rozelle and Lilyfield are shown in the map attached and below/ to the right.

This is a reminder that the project has approval to carry out tunnelling activities 24/7, including the removal of spoil (excavated material) from inside the tunnels.

For more information about the tunnel locations and depths, please visit the online Tunnel Tool [here](#).





Crane spotting in the Railyards - building the ventilation facility

As you may have noticed, there's a new and particularly tall crane now operating within the Rozelle Rail Yards. This crane, measuring approximately 40m in height (to the red cabin), will be used to lift the equipment and materials required to construct the ventilation outlets of which there will be three in this location. The outlets will begin to take shape above ground midyear and all three outlets will be standing – measuring 42, 41 and 40m in height – by quarter two of 2022.

Ventilation outlets effectively disperse tunnel emissions and ensure there is minimal impact on air quality for local residents. The tunnel ventilation system for WestConnex has been designed in line with the world's best practice and meets strict guidelines on air quality. This includes tunnel designs which are wider, flatter and higher so ventilation works more effectively.



Community Information Centre to remain closed

Due to the increases in COVID-19 cases over recent weeks, the Community Information Centre will remain closed until it's safe again to reopen.

We are disappointed about this control and apologise for any inconvenience.



How to contact us

As always, we can be easily reached via email or by phone:

Email: info@rozelleinterchange.com.au

Phone: Call **1800 660 248** and ask to be put through to the Rozelle Interchange team.

We'll endeavour to resolve your complaint or answer your enquiry as quickly as possible, and you will receive a response from the project within five business days.



Construction FAQs

More information about standard construction rules can be found [here](#). This information includes:

- Hours of work
- Standard equipment used
- How we mitigate impacts to residents

Kind regards

The Community Relations Team