

Rozelle Interchange

WestConnex

Weekly work update | Rozelle, Lilyfield & Annandale

2 December 2020

Week starting 7 December 2020 (Update no. 222)

Dear residents

Below is an overview of Rozelle Interchange construction work happening across Rozelle, Lilyfield and Annandale next week. We've separated the update into the following sections:

- night work next week
- new bus stop opening on Victoria Road at Hornsey Street planned for 16 December
- tunnel progress update
- progress shots

We encourage you to take the time to read the below information as it involves construction work or traffic changes that may impact you.



Night work next week

As advised last week, night work is scheduled for tonight and Friday night.

Noisy night work next week will be carried out on **Tuesday 8, Wednesday 9 and Friday 11 December (7pm to 6am)** and is expected to create moderate to high noise that may be heard by nearby residents. We sincerely apologise for this.

We've highlighted the approximate locations of night work next week in the map overleaf. Our ongoing night work activities next week include:

- mobilising/demobilising traffic control setup
- **utility and drainage work**
- **road construction and realignment work**
- backfilling, compacting and reinstating the work area at the end of the shift.

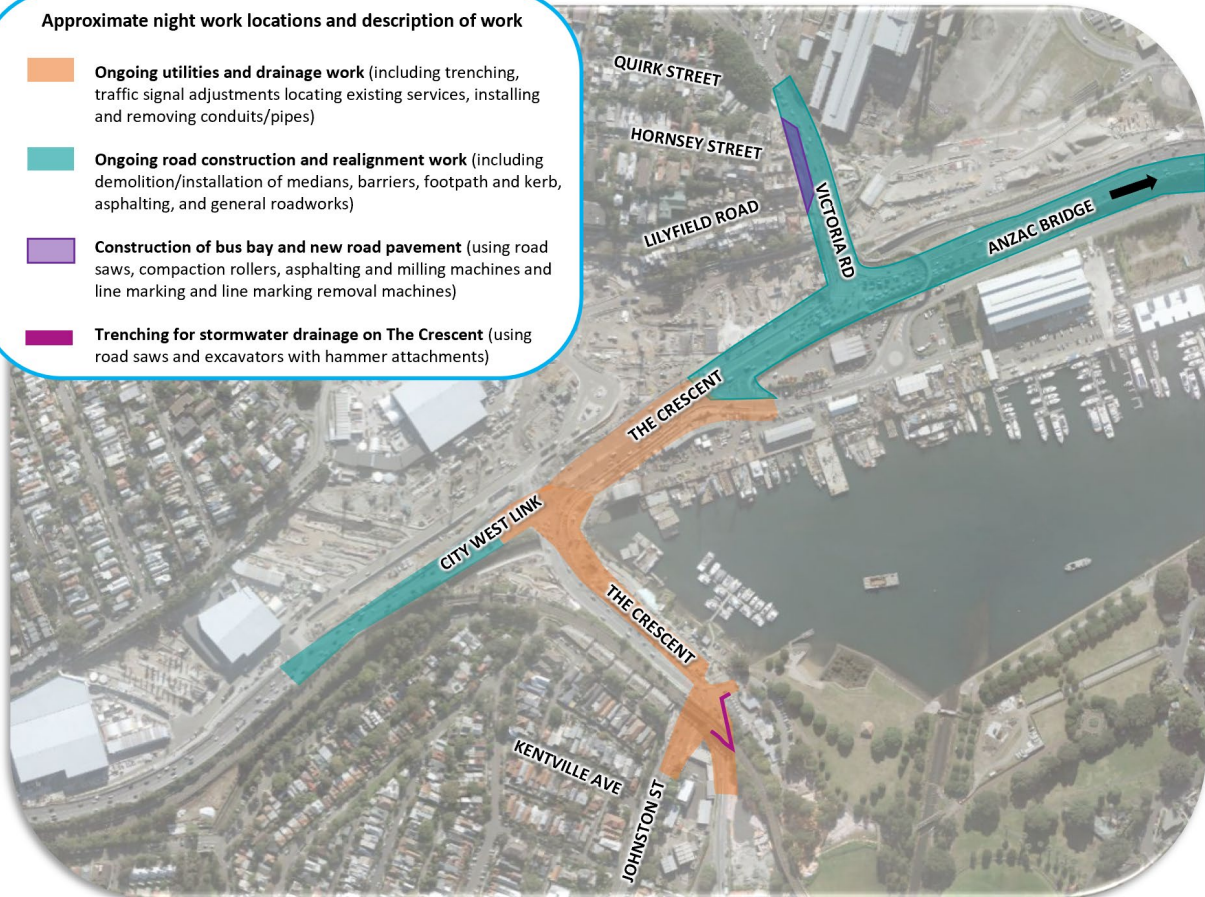
Further information about [night work to build the new bus bay and road pavement on Victoria Road](#) can be found below the map.

This work is subject to site and weather conditions and may need to be rescheduled. Please note that other activities which are non-intrusive (below a certain noise level) such as oversized deliveries, adjusting barriers and fencing and traffic control setup may occur outside of the highlighted areas.

Work is typically permitted to start on Victoria Road, City West Link and The Crescent from 10pm and every effort is made to complete the noisy activities as early as possible. Work in other locations, including the Glebe Island Assembly Area may be permitted to start earlier. For information about how we manage noise from our work, please take a look at the [Construction Fact Sheet](#).

Approximate night work locations and description of work

- **Ongoing utilities and drainage work** (including trenching, traffic signal adjustments locating existing services, installing and removing conduits/pipes)
- **Ongoing road construction and realignment work** (including demolition/installation of medians, barriers, footpath and kerb, asphalt, and general roadworks)
- **Construction of bus bay and new road pavement** (using road saws, compaction rollers, asphalt, and milling machines and line marking and line marking removal machines)
- **Trenching for stormwater drainage on The Crescent** (using road saws and excavators with hammer attachments)



Noisy night work on Victoria Road

Night work will continue over the next two weeks ahead of the new bus stop opening at Hornsey Street.

The map on the right shows the areas that we'll be working to build the new bus bay (in blue) and road pavement to widen Victoria Road (in green). We expect to complete the new road pavement next week and install new linemarking the following week.

What this work involves

To build the new road pavement we'll use a compaction roller to compact the bottom three layers of material before we install new asphalt on top. The asphalt process will be noisy as we cut into and remove sections of the existing asphalt to tie it in with the new road surface.



Once the asphalt is complete, we'll use a high-pressure water system to remove existing line marking on the road before we install new line marking to open the new section of road.

Why we must complete the work at night

A Road Occupancy Licence (ROL) is required in this location as we must close traffic lanes on Victoria Road to carry out the work. While we've been working closely with Sydney Coordination Office to trial day work in this location, unfortunately traffic volumes are too high for this work to be carried out during the day. As a result, we must carry out the work at night when traffic volumes on Victoria Road are considerably lower.



New bus stop opening on Victoria Road at Hornsey Street

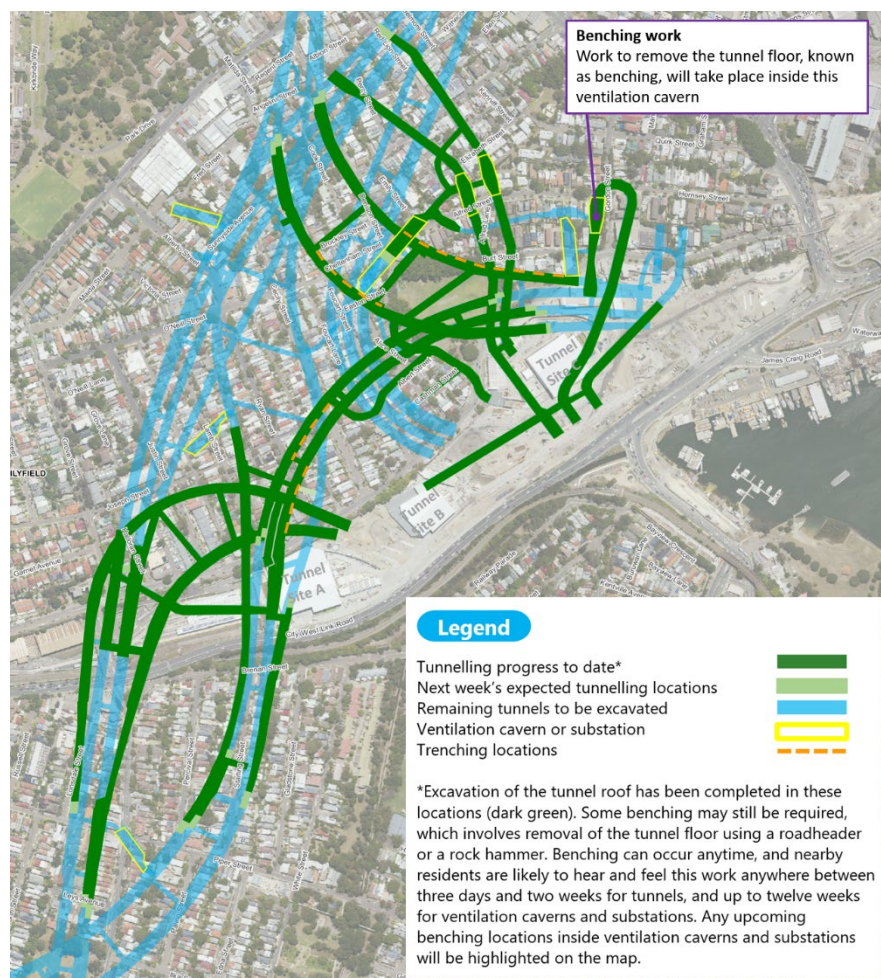
We're pleased to advise that the new **bus stop on Victoria Road at Hornsey Street** is expected to open on **Wednesday 16 December**, shown in the map to the right.

The existing bus stop on Victoria Road before Maney Street (Stop ID 203921) will remain in operation.



Tunnelling update

Excavation of the future Rozelle Interchange tunnels is progressing with 22 roadheaders in operation. Next week's expected tunnelling locations in Rozelle and Lilyfield are shown in the map attached and below.



This is a reminder that the project has approval to carry out tunnelling activities 24/7, including the removal of spoil (excavated material) from inside the tunnels.

For more information about the tunnel locations and depths, please visit the online Tunnel Tool [here](#).

Trenching work (orange dashed line on the map attached and below)

In preparation for road pavement construction, we're installing stormwater drainage inside some of the already excavated tunnels.

This work progresses at 15-20 metres per day and nearby residents may hear a hammering/sawing noise for about a week, with noise being the greatest when we're working directly beneath a property. Trenching work is undertaken during standard day-time construction hours only.

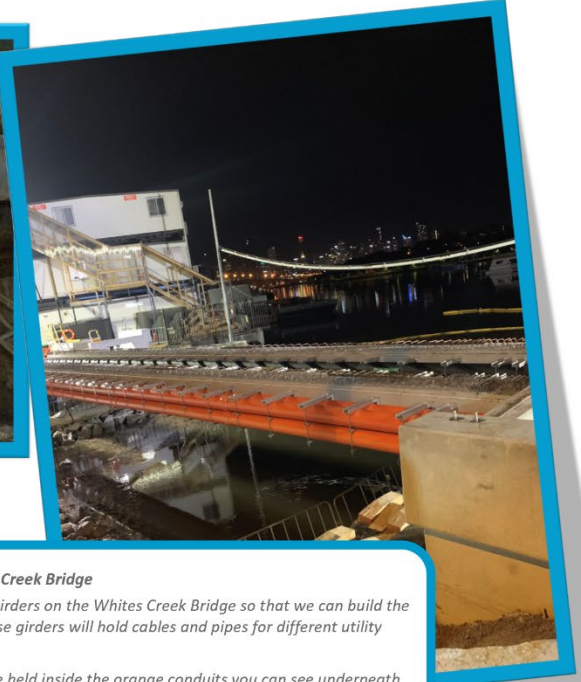


Progress shots

Future cross passage tunnel

Cross passages are the connecting tunnels between two standard traffic tunnels. These tunnels are slightly smaller and are an important safety feature that will allow people (including emergency services) to move between traffic tunnels in the event of an emergency.

The cross passage below is located beneath Justin Street, Lilyfield.



First girders installed on the Whites Creek Bridge

Last night we installed the first five girders on the Whites Creek Bridge so that we can build the shared user path on top. Each of these girders will hold cables and pipes for different utility services underneath.

Sydney Trains electrical cables will be held inside the orange conduits you can see underneath the girder in this photo.



How to contact us

In line with recent NSW Government health advice regarding COVID-19 and to ensure the safety of the community and staff, the Community Information Centre at 84 Lilyfield Road Rozelle remains temporarily closed.

If you would like to know more about our work or to make a complaint, please contact us at the details provided below.

P: 1800 660 248

E: info@rozelleinterchange.com.au

We'll endeavour to resolve your complaint or answer your enquiry as quickly as possible, and you will receive a response from the project within five business days.



Christmas shutdown period

We're pleased to advise that we'll be stopping construction work over the Christmas break between Saturday 19 December and Sunday 3 January 2021. Work will resume from 7am Monday 4 January 2021.

While some low impact activities such as security checks or minor maintenance checks may still happen during this period, we hope this break provides residents with much needed respite from the work.



Construction FAQ's

For more information about standard construction rules, please click [here](#). This information includes hours of work, standard equipment used and how we mitigate impacts to residents

We sincerely apologise for the impact that local residents, businesses and commuters are experiencing due to our work. Overall, these impacts are expected to lessen as each stage of construction is completed and we appreciate for your continued patience while we carry out construction work in this area.

Kind regards

The Community Relations Team