

Week starting 12 October 2020 (Update no. 184)

Good afternoon

Below is an overview of Rozelle Interchange construction work happening across Rozelle, Lilyfield and Annandale next week. We've broken the update into the following sections:

- reminder of night work this week (Wednesday 7 and Thursday 8 October)
- night work next week
- upcoming changes to your route late October
- update of work happening inside the Rozelle Rail Yards
- tunnel progress update

We aim to include relevant information in these weekly updates highlighting work or activities that may impact you, so we encourage you to take time to read the below details. We continue to thank you for your patience while we carry out construction work in this area.

Reminder of night work this week (Wednesday 7 & Thursday 8 October)

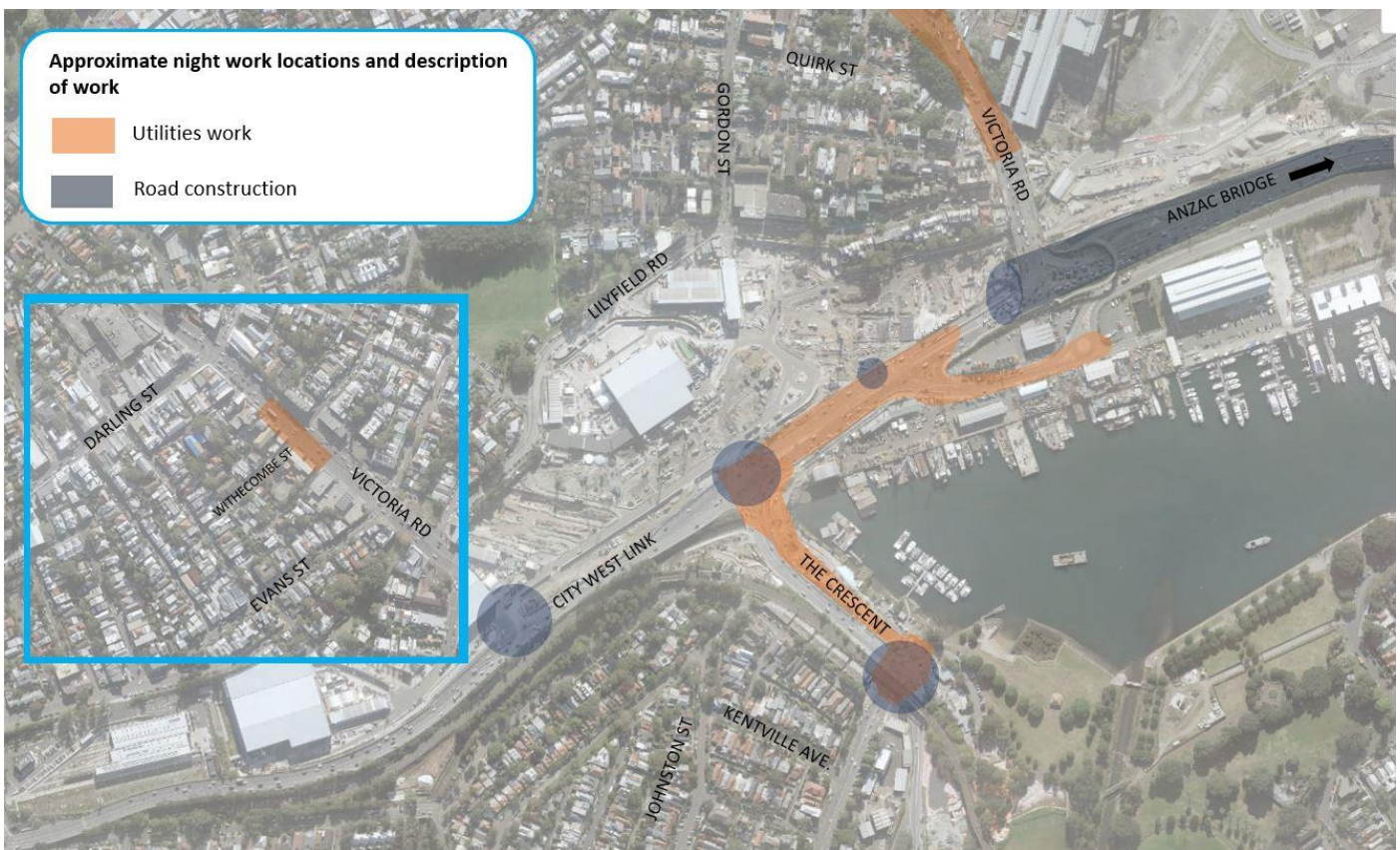
Last week we completed installation of the water main on Victoria Road near Quirk Street, and demolition of the former Beatrice Bush Bridge foundations. Thank you very much for your patience during this work as we understand these activities (particularly the bridge demolition) were noisy. Night work this week will include:

- installing a new gas main on Victoria Road near Quirk Street (approximately two weeks work) and other utility services on The Crescent (ongoing). This work will continue to be noisy
- asphaltting work on Victoria Road near Lilyfield Road (up to three more weeks). We expect this to be moderately noisy work

Night work next week

Next week noisy night work will be carried out on **Wednesday 14 October** (7pm to 6am) and **Thursday 15 October** (7pm to 6am). We've highlighted the approximate locations of night work next week in the below map. Please note other activities such as traffic control setup may occur outside of the highlighted areas:

- mobilising/demobilising traffic control setup
- **utility work (ongoing):** trenching, locating existing services, installing conduits/pipes and traffic signal adjustments
- **road construction (ongoing):** demolition/installation of medians and barriers, asphaltting, milling and re-sheeting new road pavement, line-marking and line-marking removal and general roadworks
- backfilling and reinstatement of the work area.



The above night time activities will involve the intermittent use of road saws, rock hammers, asphaltting machines, rattle guns and line marking removal equipment. These activities all create **moderate to high noise that may be heard by nearby residents** and every effort is made to complete these activities as early as possible. However, depending on the location of work (such as City West Link), we may not receive approval to start work on the road until 11pm which unfortunately delays the start and completion of the activity.

Night work is scheduled to continue for the duration of the project as we carry out extensive work on key arterial roads where day time work is not feasible. Next week we'll include a three month **lookahead of key upcoming night work** in the area.

For information about how we manage noise from our work, please take a look at the [Construction Fact Sheet](#) which can be found online at <https://bit.ly/2EMwKeA>.

Important changes to your route in October

The last round of pedestrian, cyclist and motorist changes for some time in Rozelle are scheduled to happen late October. These changes include:

- opening the Victoria Road Access Road (between The Crescent/City West Link and Victoria Road). This will be a major change for motorists who will need to use different lanes to what they're used to
- moving the pedestrian and cyclist crossing at Victoria Road/The Crescent to James Craig Road/The Crescent

In order to provide you with clear and detailed information about these changes, please look out for a separate email being sent shortly titled 'Important changes to your route in October'

What's happening inside the Rozelle Rail Yard site

As you've probably noticed, construction work is well underway inside the Rozelle Rail Yards as we build the three tunnel portals (entrance/exit points to the future tunnels) at the locations shown in the map below.



Here's a snapshot of what's happening at each site:

M8 Tunnel portals (opposite Ryan and Cecily streets)

45 columns have been constructed and work to connect the top of the columns is underway. Later this month, we'll start construction of the tunnel portal roof which will sit on top of the concrete columns



M4 Tunnel portals (between Gordon Street and Victoria Road)

Excavation is underway for the future tunnel roads. In the areas shown below, we'll be digging to a depth of approx. 22 metres



Western Harbour Tunnel portals (opposite Foucart and Hutcheson streets)

We're continuing to build the concrete elements of the tunnel portals including the columns and walls. Excavation will also continue in the areas where the future tunnel roads will be.



How this work relates to the final state

The below image is an artist's impression of the final Rozelle Parklands. Final design is subject to the Urban Design and Landscape Review process



As you may have already noticed, the construction site is currently lower than Lilyfield Road allowing us to build the portals from the ground up. Once we've completed construction of these portals and associated structures within the Parklands, we'll start backfilling the whole area so that it becomes level in most places, with Lilyfield Road.

We're currently in the planning stages to relocate some site offices and sheds located at the M8 tunnel portal site to sit on top of the portal roof once its installed in November. The roof of the site offices and sheds will sit in line with the top of the fencing along the project boundary preventing any view out onto Lilyfield. The location of the relocated site offices and sheds is shown in pink in the map overleaf.

This change is required to create additional space so that construction can start for the permanent Motorways Operation Complex and a retaining wall (shown in blue on the below map) next to City West Link.



We'll continue to provide regular updates about work happening across the sites with the next update focusing on work at The Crescent.



Courtesy notice - night work on Victoria Road at Gordon Street

Please be advised that a separate subcontractor (LTJV) working for Transport for NSW, will be carrying out night work on Victoria Road at Gordon Street over four shifts, to upgrade the pedestrian crossing including installing bicycle lights and widening some of the existing kerb ramps. This work has started and will continue until Friday 23 October (over four nights).

To limit the impact to residents, the subcontractor will work a maximum of two shifts per week and on the same nights that we're already scheduled to work. If you have questions or would like to make a complaint about this work, please call 1800 735 563 or info@ltjv.com.au

General construction FAQs

For more information on work hours, equipment used, and how we're mitigating impacts on Iron Cove residents please see [this document](#) at <https://bit.ly/2EMwKeA>.

How to contact us

In line with recent NSW Government health advice regarding COVID-19 and to ensure the safety of the community and staff, we are re-closing the Community Information Centre at 84 Lilyfield Road Rozelle.

For any information you may require, please email us at info@rozelleinterchange.com.au with your enquiry and a contact number for us to call you. If you want to know more about our work or to make a complaint, please respond to this email or contact the Rozelle Interchange Community Team on 1800 660 248.

Please let us know if you have any suggestions or ideas regarding what you would like to see in this weekly update going forward. We welcome and appreciate your feedback.

Kind regards

Carla, Laura and Eleanor

The Community Relations Team