

29 March 2016

Dear Resident

## Ground surveys

Recently, planning commenced for the M4-M5 Link – the final stage of the WestConnex project linking the M4 at Haberfield to the M5 at St Peters.

Surveys will be conducted in your area over the coming months to help develop the design of the M4-M5 Link. This work will take about two months to complete, weather permitting.

To minimise impact on nearby residents, the surveys will generally be undertaken **between 7am and 6pm from Monday to Friday and between 8am and 1pm on Saturday**. Some surveys may be conducted outside of these hours to ensure the safety of workers and motorists, and you will be notified if work is required near your property.

The surveys will involve using temporary survey equipment on the nature strip and mobile survey equipment in vehicles at the locations shown overleaf. The survey work carried out during the day is not expected to impact pedestrians or traffic and will not require access to private properties.

If you would like further information, please call 1300 660 248 or email [info@westconnex.com.au](mailto:info@westconnex.com.au).

Yours sincerely

**Peter Jones**

Project Director

## WHAT IS WESTCONNEX?

Work is underway on WestConnex which involves widening and extending the M4 and M5 and joining them to create a free-flowing motorway network. More than two-thirds of WestConnex will be built underground. WestConnex is part of a broader transport plan for Sydney which includes improved public transport, such as Sydney Metro and light rail, as well as better, more reliable motorway solutions. For more information visit [westconnex.com.au/explore\\_the\\_route/stage\\_3](http://westconnex.com.au/explore_the_route/stage_3).

For more information

✉ [info@westconnex.com.au](mailto:info@westconnex.com.au)

☎ 1300 660 248

🌐 [westconnex.com.au](http://westconnex.com.au)



Easing  
congestion

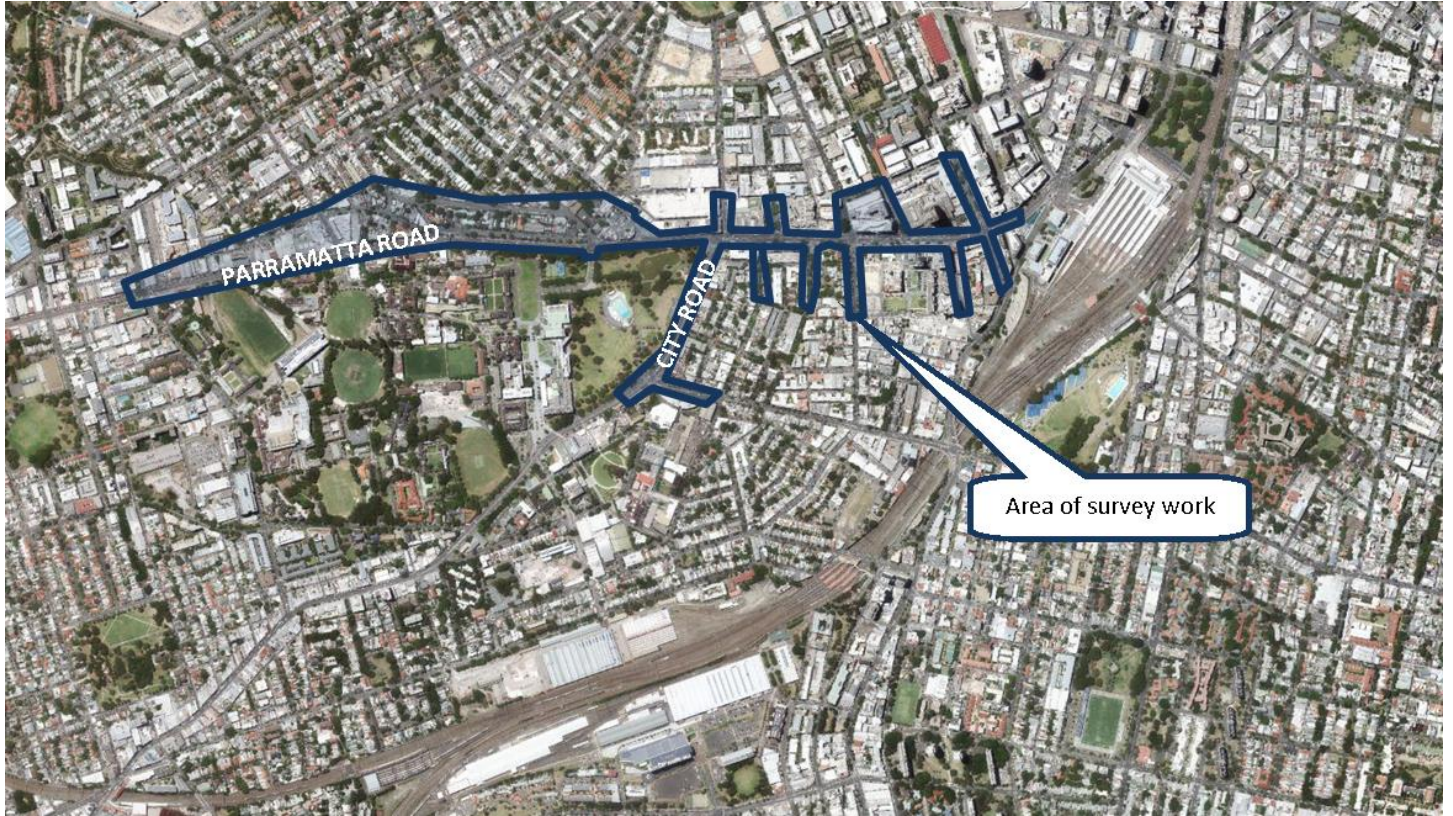


Creating  
jobs



Connecting  
communities

Area of survey work around Camperdown.



## We speak your language

### ENGLISH

To learn more, simply visit [westconnex.com.au/yourlanguage](http://westconnex.com.au/yourlanguage). Need an interpreter? Call the Translating and Interpreting Service on 131 450.

### ARABIC

لمعرفة المزيد، ما عليك سوى زيارة [westconnex.com.au/yourlanguage](http://westconnex.com.au/yourlanguage). بحاجة إلى مترجم؟ اتصل بخدمة الترجمة الكتابية والترجمة الشفوية على الرقم 131450.

### CHINESE

如需了解更多详情，请访问 [westconnex.com.au/yourlanguage](http://westconnex.com.au/yourlanguage)。如需翻译，请拨打翻译与口译热线 131 450

### GREEK

Για να μάθετε περισσότερα, απλά επισκεφθείτε το [westconnex.com.au/yourlanguage](http://westconnex.com.au/yourlanguage). Χρειάζεστε διερμηνέα; Καλέστε την Υπηρεσία Μεταφραστών και Διερμηνέων στο 131 450.

### HINDI

अधिक जानने के लिए केवल [westconnex.com.au/yourlanguage](http://westconnex.com.au/yourlanguage) पर देखें। क्या आपको दुभाषिए की ज़रूरत है? अनुवाद व दुभाषिया सेवा को 131 450 पर फ़ोन करें।

### ITALIAN

Per saperne di più, vai semplicemente al sito [westconnex.com.au/yourlanguage](http://westconnex.com.au/yourlanguage). Hai bisogno di un interprete? Chiama il servizio d'interpretazione e traduzione al numero 131 450.

### KOREAN

더 자세히 알고 싶으시면, 바로 [westconnex.com.au/yourlanguage](http://westconnex.com.au/yourlanguage) 를 방문하시면 됩니다. 통역사가 필요하십니까? 번역 및 통역 서비스에 131 450으로 연락하십시오.

### VIETNAMESE

Để biết thêm, chỉ cần tới trang mạng [westconnex.com.au/yourlanguage](http://westconnex.com.au/yourlanguage). Cần thông dịch viên? Hãy điện thoại cho Dịch vụ Thông Phiên Dịch ở số 131 450.