



### Campbell Road site establishment - Excavation and shed construction

Work is progressing at the Campbell Road civil and tunnelling site to prepare for tunnelling to start in the coming months. From 1 March 2019 the project team will transition into the next phase of site establishment. This will involve the delivery and assembly of specialist tunnelling equipment, excavation of the tunnel access ramps and St Peters Interchange access ramps, installing hoarding along Campbell Road/Street, constructing a large acoustic shed over the tunnel access ramp and installing site offices required to support infrastructure.

#### What we're doing:

##### Hoarding

In late February hoardings will be installed along the project boundary on Campbell Road.

##### Excavation

The project team will excavate two areas within the Campbell Road site. The southern excavation (shown as 1 in the map overleaf) will be used as a ramp to access the tunnel during construction.

The northern most excavation (shown as 2 in the map overleaf) will become the permanent on ramp into the tunnel once complete.

##### Acoustic Shed

A large temporary shed will be built in the southern part of the site and remain in place throughout tunnelling. The shed will reduce noise impacts during tunnelling and the load out of dirt and rock removed from the tunnel.

Following input from the local residents the colour of the acoustic shed will be Pale Eucalypt.

##### Site Offices

A temporary construction site office will be established in the Campbell Road site. The office will be a multi-storey structure. About 100 people will be based at the office with a workforce of about 350 during peak construction.

#### When

From March 2019

#### Hours of operation

7.00am - 6.00pm Monday to Friday and 8am-6pm Saturday

#### Where

Campbell Road civil and tunnelling Site.

#### What

Site establishment work including the excavation of access ramps, construction of a large shed, delivery of tunnelling machines and construction of site offices and hoarding.



#### We speak your language

Need an interpreter?  
Call the Translating and Interpreting Service on **131 450**.

Notification No.MT070

Constructed by



## Delivery and assembly of tunnelling equipment

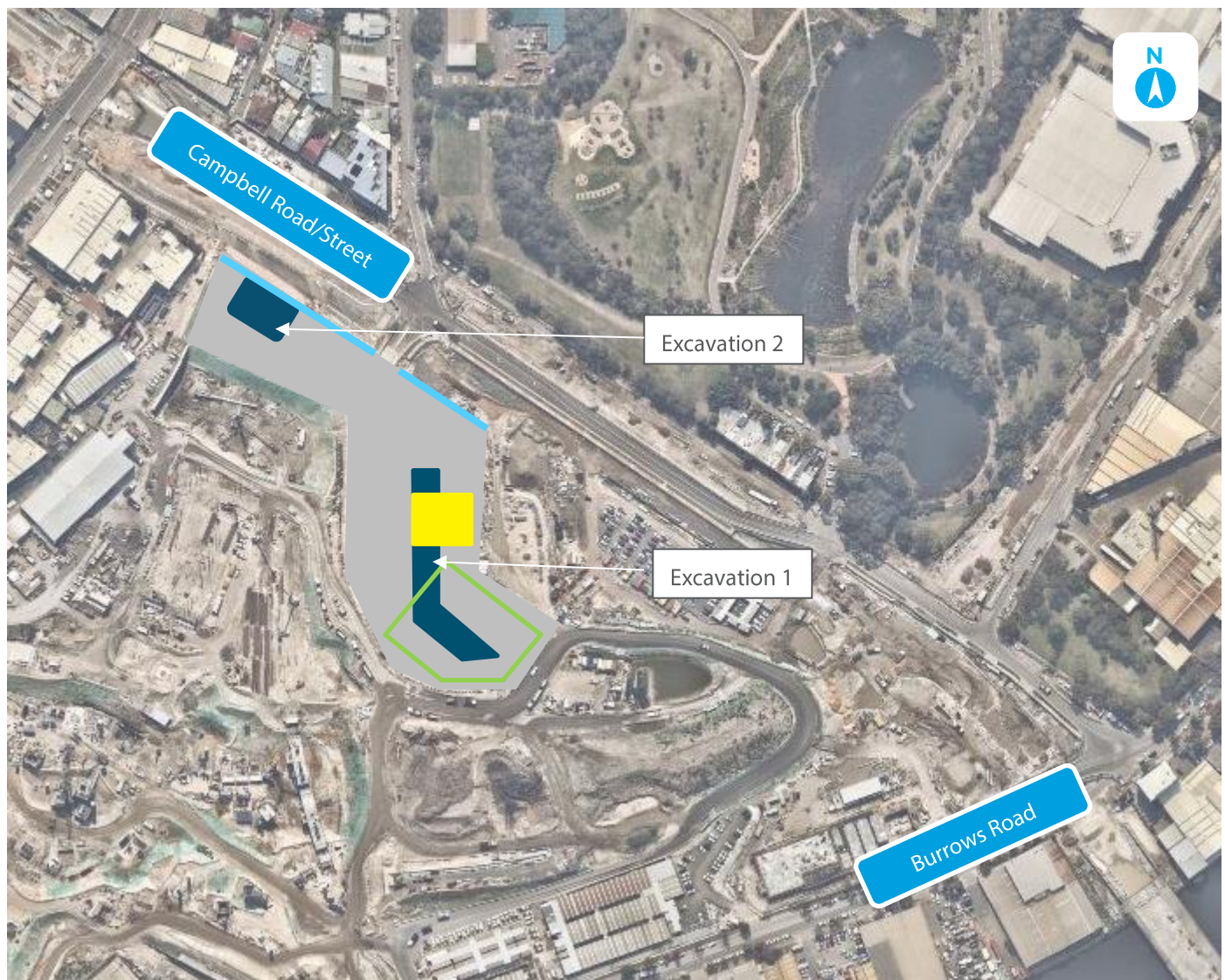
From February, specialist tunnelling equipment will be delivered to the Campbell Road site to be assembled and prepared for tunnelling. Due to the size of these machines they will need to be delivered at night.

## How this affects you

The majority of this work will be carried out during the approved civil construction hours of **7.00am - 6.00pm Monday to Friday and 8.00am - 6.00pm on Saturday**. Tunnelling, once it starts, will be carried out 24 hours seven days a week. Low noise activities and approved oversized deliveries may occur at night. Residents will be notified prior to tunnelling near their property.

Equipment required for this work includes, but is not limited to; excavators, roadheaders, cranes, saw cutters, jack hammers, rock breakers, hand tools, water carts, road sweepers, scanning wands, vacuum trucks, generators, trucks, piling rigs, traffic control and light vehicles. There will be more truck movements on Campbell Road during this work.

## Site set up areas



Map data © 2018 Nearmap

