



Day and night time road closures and traffic changes on Campbell Street and surrounding streets, St Peters from Monday 9 April to Friday 13 April

A significant amount of day time and night time work with changed traffic conditions is required from Monday 9 April to Friday 13 April. The information below details day work and traffic changes for the week followed by night work and traffic changes. There are a number of traffic changes throughout this work.

Day work:

Day work on Campbell Street (west) on Monday 9 April, Tuesday 10 April, Wednesday 11 April, 7am to 6pm (Thursday 12 April and Friday 13 April as contingency)

Delivery of large stormwater drainage culverts will be taking place over three day time shifts into the site compound on the southern side of Campbell Street between Brown Street and Florence Street.

What we're doing

New stormwater drainage culverts will be delivered into the site compound on the southern side of Campbell Street. These culverts will be installed beneath the new Campbell Street road surface to reduce flooding in the area.

Campbell Street between Unwins Bridge Road and Florence Street will be closed in both directions to facilitate these deliveries. Additional traffic changes, outlined overleaf, will also be in place. Pedestrian access will be maintained along Campbell Street during this work. Please see map no.1 'Day work on Campbell Street (west)' overleaf to better explain the location of this work.

A crane, used to unload the culverts, will arrive from **5am on Monday 9 April**. Culvert delivery and unloading will take place on:-

- Monday 9 April - 7am to 6pm
- Tuesday 10 April - 7am to 6pm
- Wednesday 11 April - 7am to 6pm
- (Thursday 12 April and Friday 13 April as contingency)

When

Night work:

Campbell Street & Princes Highway

- Mon 9 April (7pm to 5am)
- Tues 10 April (7pm to 5am)
- Wed 11 April (7pm to 5am)
- Thurs 12 April (7pm to 5am)
- Friday 13 April (7pm to 5am)

Day work:

Campbell Street (west)

- Mon 9 April (7am to 6pm)
- Tues 10 April (7am to 6pm)
- Wed 11 April (7am to 6pm)
- (Thursday 12 April and Friday 13 April, 7am to 6pm, as contingency)

Campbell Street (east)

- Tues 10 April (10am to 3pm)
 - Wed 11 April (10am to 3pm)
- All above dates and times are weather permitting

We speak your language



Need an interpreter?
Call the Translating and Interpreting Service on **131 450**.

Notification No. 384

Constructed by



Traffic changes

The below road closures and traffic changes will be in place during the day work:

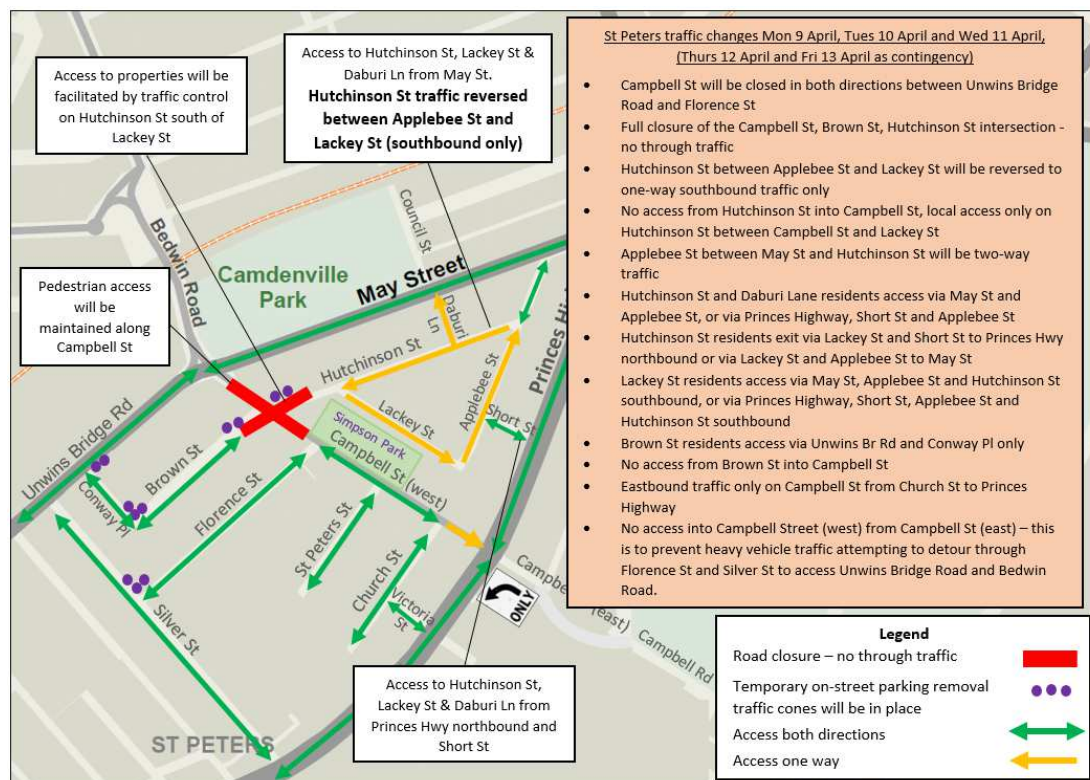
- Campbell Street will be closed in both directions between Unwins Bridge Road and Florence Street
- Full closure of the Campbell Street, Brown Street, Hutchinson Street intersection - no through traffic
- **Hutchinson Street between Applebee Street and Lackey Street will be reversed to one-way southbound traffic only**
- No access between Hutchinson Street and Campbell Street, local access only on Hutchinson Street between Campbell Street and Lackey Street
- Applebee Street between May Street and Hutchinson Street will be two-way traffic
- Hutchinson Street and Daburi Lane residents enter via May Street and Applebee Street, or via Princes Highway, Short Street and Applebee Street
- Hutchinson Street residents exit via Lackey Street and Short Street to Princes Highway northbound or via Lackey Street and Applebee Street to May Street
- Lackey Street residents access via May Street, Applebee Street and Hutchinson Street southbound, or via Princes Highway, Short Street, Applebee Street and Hutchinson St southbound
- Brown Street and Conway Place residents enter and exit via Unwins Bridge Road and Conway Place only
- No access from Brown Street into Campbell Street
- **Eastbound traffic only on Campbell Street from Church Street to Princes Highway**
- **No access into Campbell Street (west) from Campbell St (east) – this is to prevent heavy vehicle traffic attempting to detour through Florence Street and Silver Street to access Unwins Bridge Road and Bedwin Road.**

Temporary parking restrictions will be in place on Brown Street, Hutchinson Street and surrounding streets ahead of the implementation of the road closure from **7am Sunday 8 April and for the duration of each day of work.**

Temporary traffic cones and parking restrictions are put in place to allow for easier resident vehicle movement through narrow streets, such as on the corner of Brown Street and Conway Place and the corner of Florence Street and Silver Street. It would assist the traffic flow in this area if vehicles did not park in coned areas while the changed traffic conditions are in place.

Traffic control will be in place around the work areas and on surrounding streets to manage road users through the temporary traffic changes.

Map no.1: Day work on Campbell Street (west) on Monday 9 April, Tuesday 10 April, Wednesday 11 April, 7am to 6pm (Thursday 12 April and Friday 13 April as contingency)



Day work on Campbell Street (east) Tuesday 10 April and Wednesday 11 April, 10am to 3pm

Day time work will be carried out on Campbell Street (east) and Campbell Road between Princes Highway and Barwon Park Road. To facilitate this work, traffic changes and road closures will be in place.

What we're doing

- **Tuesday 10 April 10am to 3pm**

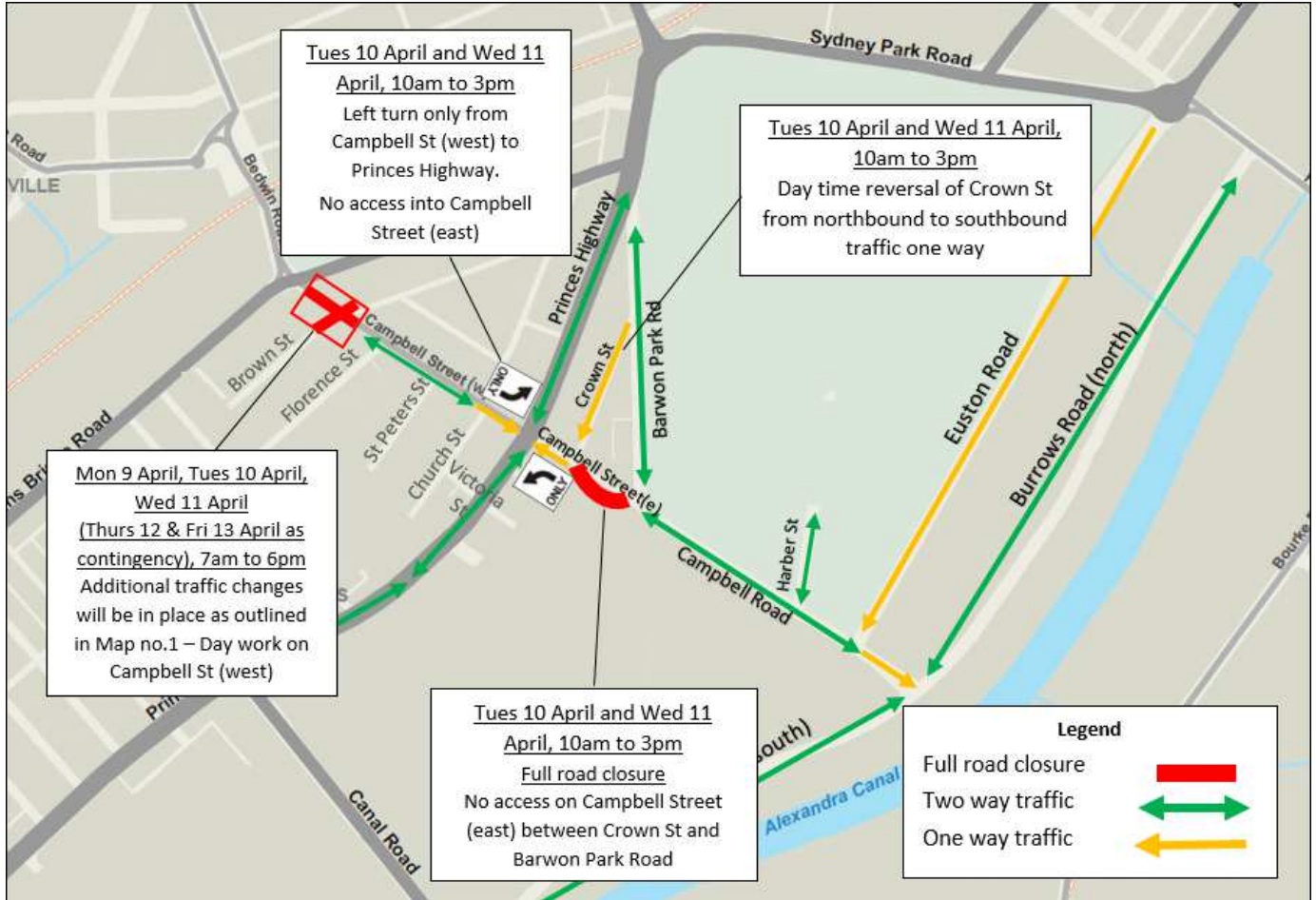
- **Wednesday 11 April 10am to 3pm**

Continuation of work to backfill of a section of the excavation on Campbell Street (east) between Crown Street and Barwon Park Road will be carried out in preparation for road pavement construction. Please see the map no.2 'Day work on Campbell Street (east)' to better explain the location of this work.

Traffic changes

- Campbell Street (east) will be closed in both directions between Crown Street and Barwon Park Road
- Crown Street traffic will be reversed - southbound traffic only
- Campbell Street (east) between Crown Street and Princes Highway will be westbound traffic only
- Crown Street residents to enter via Barwon Park Road, exit via Campbell Street (east) to Princes Highway and Campbell Street (west)
- No right turn from Barwon Park Road southbound to Campbell Street (east) and Princes Highway
- No access from Campbell Street (west) to Campbell Street (east). Detour via Princes Highway northbound, Sydney Park Road, Euston Road southbound, Campbell Road and Barwon Park Road
- Traffic control will be in place around the work areas and on surrounding streets to manage road users through the changes.

Map no.2: Day work road closures and traffic changes on Campbell Street (east) and Campbell Road on Tuesday 10 April & Wednesday 11 April 10am to 3pm



Night work:

Night work and traffic changes on Unwins Bridge Road and Bedwin Road, St Peters on Monday 9 April, Wednesday 11 April, Thursday 12 April and Friday 13 April, 7pm to 5am

Night work will take place on Unwins Bridge Road and Bedwin Road near the intersection of Campbell Street and May Street. Traffic changes will be implemented at night when traffic volumes are lower for the safety of workers, motorists, cyclists and pedestrians.

What we're doing

Night work will be carried out to dig a trenches in the road surface to install new power, Optus and water services on Unwins Bridge Road and Bedwin Road near the intersection of Campbell Street and May Street. Please see map no.3 'Night work and traffic changes on Unwins Bridge Road and Bedwin Road, St Peters' to better explain this work.

How this affects you

Unwins Bridge Road utility road crossing Monday 9 April, 7pm to 5am

Traffic changes:

The intersection of Unwins Bridge Road, Campbell Street, May Street and Bedwin Road will be controlled by traffic control under stop / slow traffic set up during this work. Traffic in all directions will be maintained in all directions. Please expect delays.

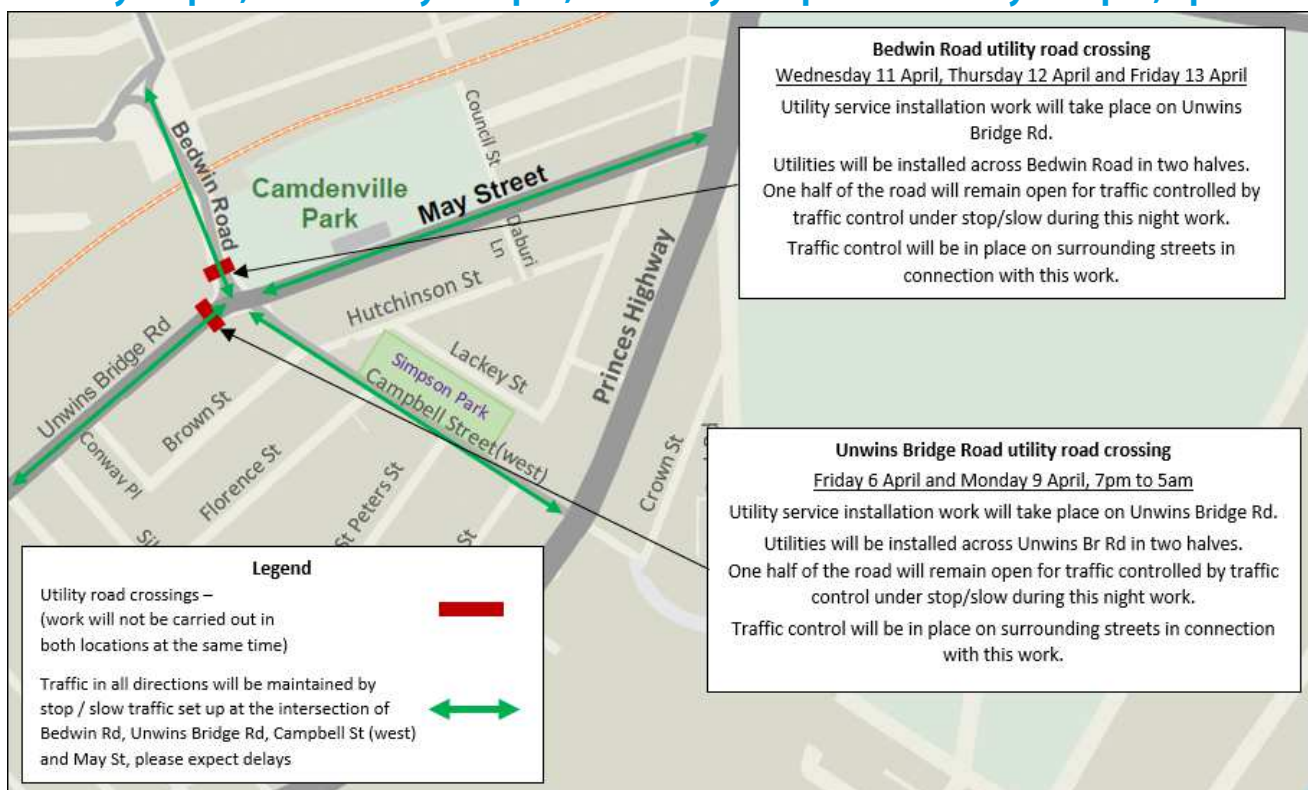
Bedwin Road utility road crossing - Wednesday 11 April, Thursday 12 April and Friday 13 April, 7pm to 5am

Traffic changes:

The intersection of Bedwin Road, Campbell Street, May Street and Unwins Bridge Road will be controlled by traffic control under stop / slow traffic set up during this work. Traffic in all directions will be maintained in all directions. Please expect delays.

Equipment used during the work will include excavators, compactors, rollers, road saw, jackhammer, construction trucks, hand tools, light vehicles, lighting towers, and mobile cranes.

Map no.3: Night work and traffic changes on Unwins Bridge Road and Bedwin Road, St Peters on Monday 9 April, Wednesday 11 April, Thursday 12 April and Friday 13 April, 7pm to 5am



Night work around the Campbell Street and Princes Highway intersection Monday 9 April, Tuesday 10 April, Wednesday 11 April and Thursday 12 April, 7pm to 5am

Work is ongoing to install and upgrade utilities along Campbell Street and surrounding streets. Night work will take place on Campbell Street near the intersections of St Peters Street, Church Street and Princes Highway. This work will be conducted at night when traffic volumes are lower for the safety of workers, motorists, cyclists and pedestrians.

What we're doing

Monday 9 April, Tuesday 10 April, Wednesday 11 April and Thursday 12 April, 7pm to 5am

Telstra cable haul communications work will take place. This work is not expected to have high levels of associated noise.

Work will take place at the following locations:

- Princes Highway northbound lane near the Campbell Street intersection
- Church Street at the Campbell Street intersection
- St Peters Street and Campbell Street intersection

Tuesday 10 April, 9pm to 5am - Princes Highway utility work in northbound lane

Thursday 12 April, 9pm to 5am - Princes Highway utility work in southbound lane

Princes Highway road crossings will be carried out for Ausgrid power and Optus communications work. This work will involve trenching of the road surface on Princes Highway for the installation of utility services. Please see map no.4 'Night work and traffic changes on Campbell Street and surrounding streets' to better explain the location of this work.

Traffic changes

Monday 9 April, Tuesday 10 April, Wednesday 11 April and Thursday 12 April, 9pm to 5am - Telstra cable haul work

- Princes Highway northbound lane closure near the Campbell Street intersection
- Stop / slow traffic set up will be in place around the St Peters Street and Campbell Street intersection
- Stop / slow traffic set up will be in place on Church Street around the work area
- Traffic will always be maintained in both directions on Campbell Street, Princes Highway, St Peters Street and Church Street

Tuesday 10 April (Thursday 12 April as contingency), 9pm to 5am - Princes Highway northbound lane trenching

- Traffic on Princes Highway in both directions will travel in the southbound lanes
- No access between Campbell Street (east) and Campbell Street (west) across Princes Highway
- Local access to Campbell Street (west) from May Street and Unwins Bridge Road. Traffic control will manage local access from the May Street and Unwins Bridge Road intersection
- No access to Victoria Street from Princes Highway northbound, local access via Silver Street, Florence Street, Campbell Street (west) or via the May Street and Unwins Bridge Road intersection to Campbell Street (west)
- No access to Princes Highway from Campbell Street (west) detour via Florence Street and Silver Street or via the May Street and Unwins Bridge Road intersection
- Local access to Crown Street will be permitted from Campbell Street (east) only. Traffic control will manage local access from the Campbell Street (east) and Barwon Park Road intersection.

Thursday 12 April, 9pm to 5am - Princes Highway southbound lane trenching

- Traffic on Princes Highway in both directions will travel in the northbound lanes
- No access between Campbell Street (east) and Campbell Street (west) across Princes Highway
- Local access to Crown Street will be permitted from Campbell Street (east) only. Traffic control will manage local access from the Campbell Street (east) and Barwon Park Road intersection.

Traffic control will be in place on Campbell Street and surrounding streets to assist road users during this work.

Equipment used during the night work will include:

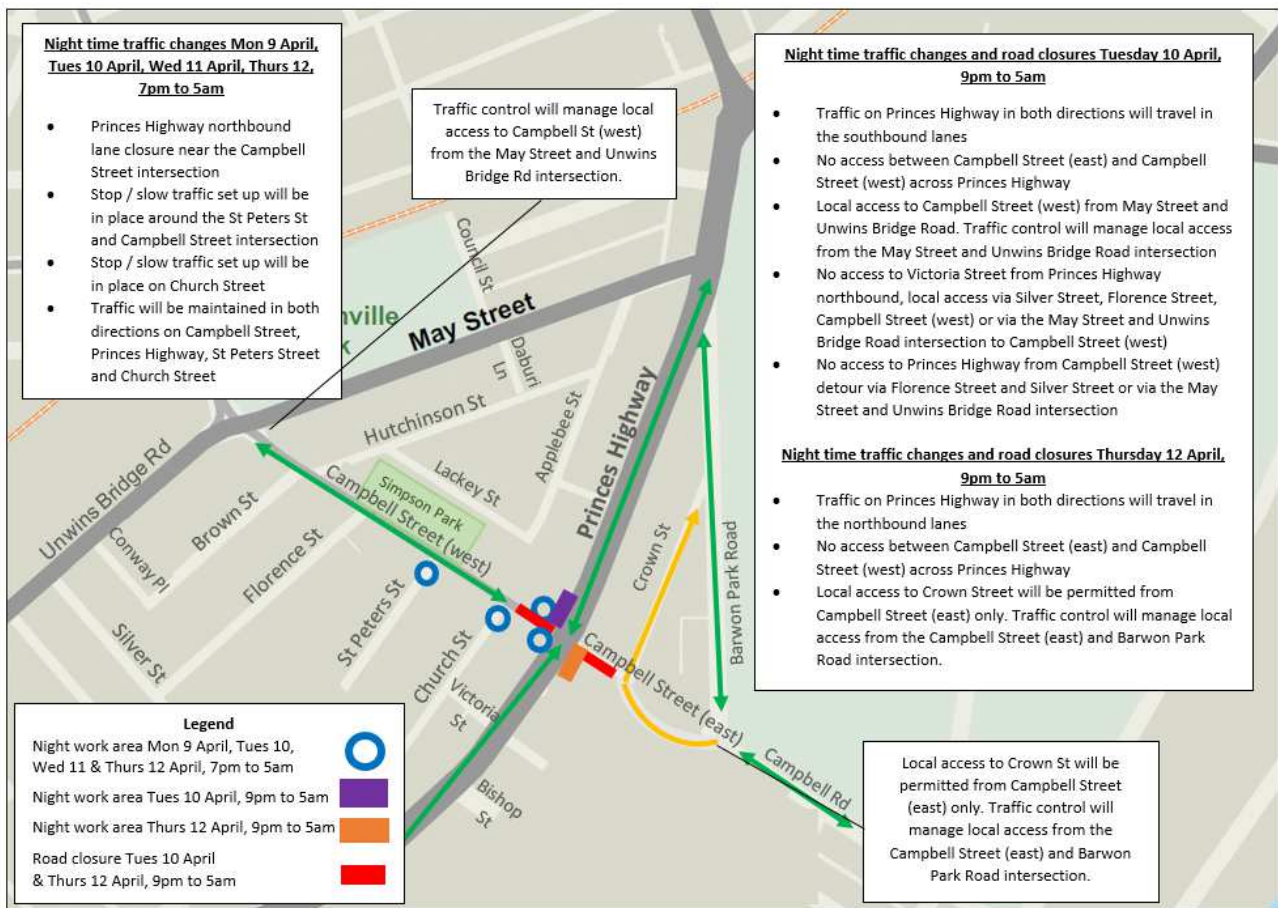
- **Monday 9 April, Tuesday 10 April, Wednesday 11 April and Thursday 12 April, 7pm to 5am** - An electric winch, hand tools, light vehicles and lighting towers.
- **Tuesday 10 April and Thursday 12 April, 9pm to 5am** - Road saw, excavators, vac trucks, tippers, light vehicles, hand tools, rock breaker and lighting towers.

The site compounds on May Street and along the southern side of Campbell Street and on both sides of Princes Highway will be used intermittently throughout the night work for storage of materials and vehicle parking.

Every effort will be made to minimise noise and light spill associated with this work by

- turning off equipment and vehicles when not in use
- using non-tonal reversing beepers on all machinery during night work
- directing noise generating equipment and lights away from residential properties where possible

Map no.4: Night work and traffic changes on Campbell Street and surrounding streets, St Peters



For more information - Drop in to the Community Information Centre, 27 Burrows Road, St Peters NSW 2044. Open from 9am to 5pm, Monday to Friday (excluding public holidays)



Australian Government

BUILDING OUR FUTURE



Constructed by

