

# **WestConnex M4-M5 Link Ambient air quality monitoring results**

**February 2017**

## CONTENTS

<b>1</b>	<b>Introduction: Understanding local air quality .....</b>	<b>4</b>
<b>2</b>	<b>Monitoring air quality .....</b>	<b>4</b>
<b>3</b>	<b>Monitoring methodology .....</b>	<b>5</b>
<b>4</b>	<b>Results.....</b>	<b>6</b>
4.1	Ramsay Street, Haberfield.....	6
4.2	City West Link, Rozelle .....	7
4.3	St Peters Public School, St Peters.....	8
4.4	Time series.....	9
4.5	Comparison with data from OEH monitoring sites.....	11

## GLOSSARY

Term	Description
CH <sub>4</sub>	Methane
CO	Carbon monoxide
NMHC	Non-methane hydrocarbons
NO	Nitric oxide
NO <sub>2</sub>	Nitrogen dioxide
NO <sub>x</sub>	Oxides of nitrogen
O <sub>3</sub>	Ozone
ppb	Parts per billion
ppm	Parts per million
PM <sub>10</sub>	Airborne particulate matter with an aerodynamic diameter of less than 10 µm
PM <sub>2.5</sub>	Airborne particulate matter with an aerodynamic diameter of less than 2.5 µm
THC	Total hydrocarbons
µg/m <sup>3</sup>	Micrograms per cubic metre

## 1 Introduction: Understanding local air quality

WestConnex is undertaking air quality monitoring within local areas in close proximity to the proposed M4-M5 Link motorway. Monitoring stations have been established to measure the existing air quality conditions. The data collected through our monitoring program provides a baseline for the current air quality conditions along the project corridor. The data is being collected as part of the environmental assessment process for the M4-M5 Link project.

## 2 Monitoring air quality

To support the development and assessment of the M4-M5 Link, three ambient air quality monitoring stations have been established along the project corridor. Data from these three stations supplements the multiple long-term monitoring stations operated by NSW Office of Environment and Heritage and Roads and Maritime Services. Air quality specialists have been commissioned to operate and maintain the monitoring network during the planning phase of the project. A map of the monitoring station locations across the M4-M5 Link project area is provided below in **Figure 1**.

**Figure 1** M4-M5 Link air quality monitoring station locations



### 3 Monitoring methodology

Air quality monitoring is undertaken in accordance with Australian standards and guidelines. Specific pollutants are monitored and reported against the relevant air quality goals in the National Environment Protection Measure (Ambient Air Quality). Meteorological conditions are also monitored locally to give a greater understanding of the conditions that may influence air quality outcomes. For more information on the pollutants measured and monitoring methodology visit [www.westconnex.com.au](http://www.westconnex.com.au).

A data verification process is carried out to ensure high quality data capture. The data verification process includes:

- Removal of clearly incorrect data
- Corrections for instrument drift
- Corrections for offsets
- Removal of data acquired during calibration periods
- Removal of data during servicing, maintenance and equipment breakdown periods.

The above process can cause data gaps, and may be one reason why there is some data missing in the graphs provided.

The instruments measuring pollutants are subject to some variability and the results should be read within this context.

## 4 Results

A summary of air quality results from the M4-M5 Link monitoring network is provided below. Results of CO, NO<sub>2</sub>, PM<sub>10</sub> and PM<sub>2.5</sub> concentrations are provided and results are also represented graphically. The solid red line in each of the figures corresponds to the respective criteria or advisory reporting standard for that pollutant as stated in the NSW *Approved Methods* (NSW DEC, 2005).

Data from the M4-M5 Link air quality monitoring sites were compared to the free, 24 hour average data available from the NSW Office of Environment and Heritage (OEH) web site. Data were obtained for the OEH sites Chullora, Rozelle and Earlwood and the results are shown in **Section 4.5**.

### 4.1 Ramsay Street, Haberfield

A summary of the air quality results from the Ramsay Street monitoring station in Haberfield is provided in **Table 1**.

**Table 1** Ramsay Street summary statistics for air pollutants

Statistics	CO (ppm) 8 hour rolling average values	NO <sub>2</sub> (ppb) 1 hour average values	PM <sub>10</sub> (µg/m <sup>3</sup> ) 24 hour average values	PM <sub>2.5</sub> (µg/m <sup>3</sup> ) 24 hour average values
Standard	9	120	50	25
Average value	0.1	13.2	21.2	8.5
Maximum value	0.4	50.9	42.0	18.7
Minimum value	0.0	1.0	9.2	2.8

**Note:** All monitoring instruments have an uncertainty associated with each measurement. This is normally described as  $\pm$  a specific value. Due to this, negative values could be reported at very low ambient concentrations.

### Reporting

No exceedances of the air quality criteria in the NSW *Approved Methods* (NSW DEC, 2005) were recorded during the reporting period for the key pollutants outlined above at the Ramsay Street monitoring station in Haberfield.

## 4.2 City West Link, Rozelle

A summary of the air quality results from the City West Link monitoring station in Rozelle is provided in **Table 2**.

**Table 2** City West Link summary statistics for air pollutants

Statistics	CO (ppm) 8 hour rolling average values	NO <sub>2</sub> (ppb) 1 hour average values	PM <sub>10</sub> (µg/m <sup>3</sup> ) 24 hour average values	PM <sub>2.5</sub> (µg/m <sup>3</sup> ) 24 hour average values
Standard	9	120	50	25
Average value	0.4	14.5	24.7	10.1
Maximum value	0.7	101.7	39.1	19.4
Minimum value	0.1	-0.6	12.5	4.6

**Note:** All monitoring instruments have an uncertainty associated with each measurement. This is normally described as  $\pm$  a specific value. Due to this, negative values could be reported at very low ambient concentrations.

### Reporting

It should be noted that between 7<sup>th</sup> and 9<sup>th</sup> February and 20<sup>th</sup> and 21<sup>st</sup> February two power outages occurred, resulting in the loss of data.

No exceedances of the air quality criteria in the NSW *Approved Methods* (NSW DEC, 2005) were recorded during the reporting period for the key pollutants outlined above at City West Link, Rozelle.

### 4.3 St Peters Public School, St Peters

A summary of the air quality results from the St Peter Public School monitoring station in St Peters is provided in **Table 3**.

**Table 3 St Peters summary statistics for air pollutants**

Statistics	CO (ppm) 8 hour rolling average values	NO <sub>2</sub> (ppb) 1 hour average values	PM <sub>10</sub> (µg/m <sup>3</sup> ) 24 hour average values	PM <sub>2.5</sub> (µg/m <sup>3</sup> ) 24 hour average values
Standard	9	120	50	25
Average value	0.2	10.7	23.1	5.9
Maximum value	0.4	38.6	49.2	11.7
Minimum value	0.0	1.5	13.1	1.1

**Note:** All monitoring instruments have an uncertainty associated with each measurement. This is normally described as  $\pm$  a specific value. Due to this, negative values could be reported at very low ambient concentrations.

### Reporting

Reduced data availability for PM<sub>10</sub> and PM<sub>2.5</sub> was consequence of an instrument issue between 10<sup>th</sup> and 13<sup>th</sup> February.

On 6<sup>th</sup> February, the 24-hour average PM<sub>10</sub> concentration was almost the same as the air quality criterion of 50 µg/m<sup>3</sup> in the NSW Approved Methods. Elevated PM<sub>10</sub> concentrations were also noted at the OEH sites (**Figure 8**).

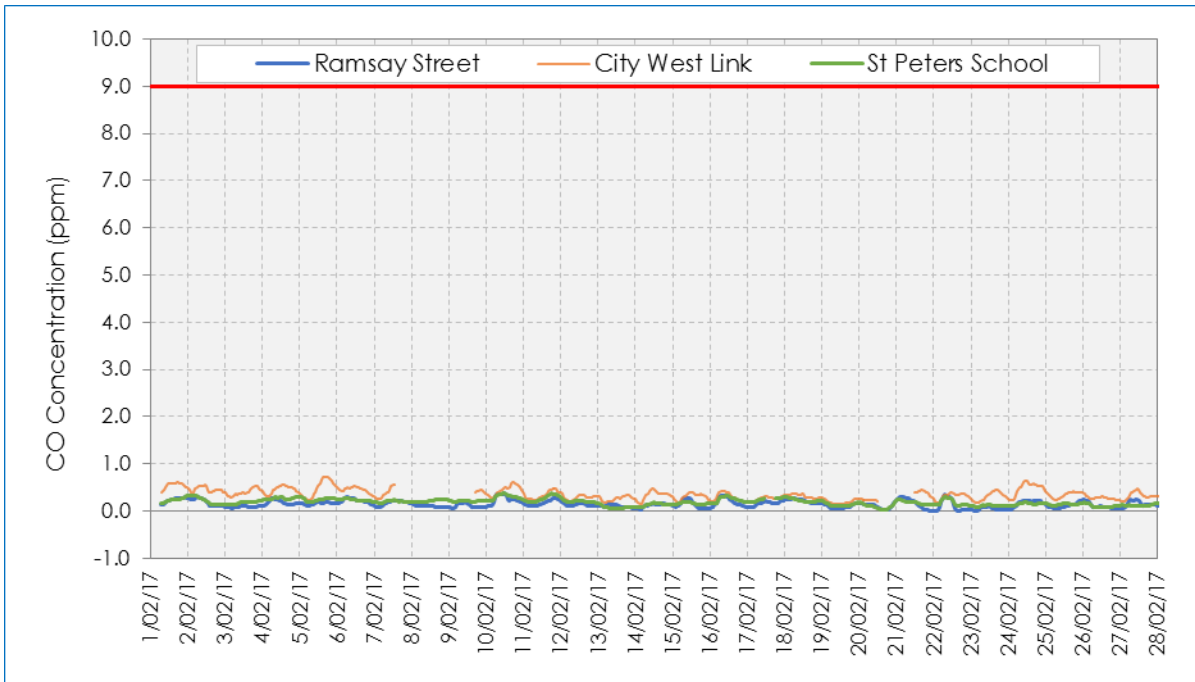
No exceedances of the air quality criteria in the NSW *Approved Methods* (NSW DEC, 2005) were recorded during the reporting period for the key pollutants outlined above at the St Peters School monitoring station in St Peters.



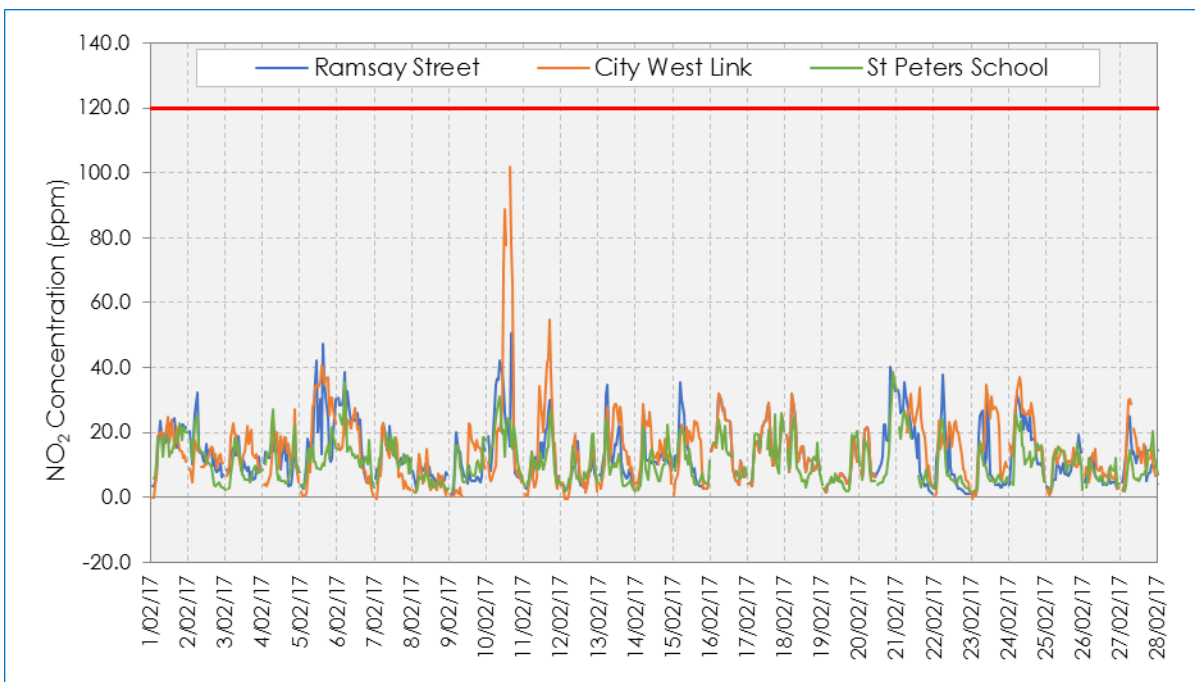
#### 4.4 Time series

The time series for the various pollutants during the reporting period are provided below. Pollutant concentrations are also averaged over the periods stated for short-term air quality criteria in the NSW Approved Methods. Where appropriate, the corresponding criterion is shown as a solid red line.

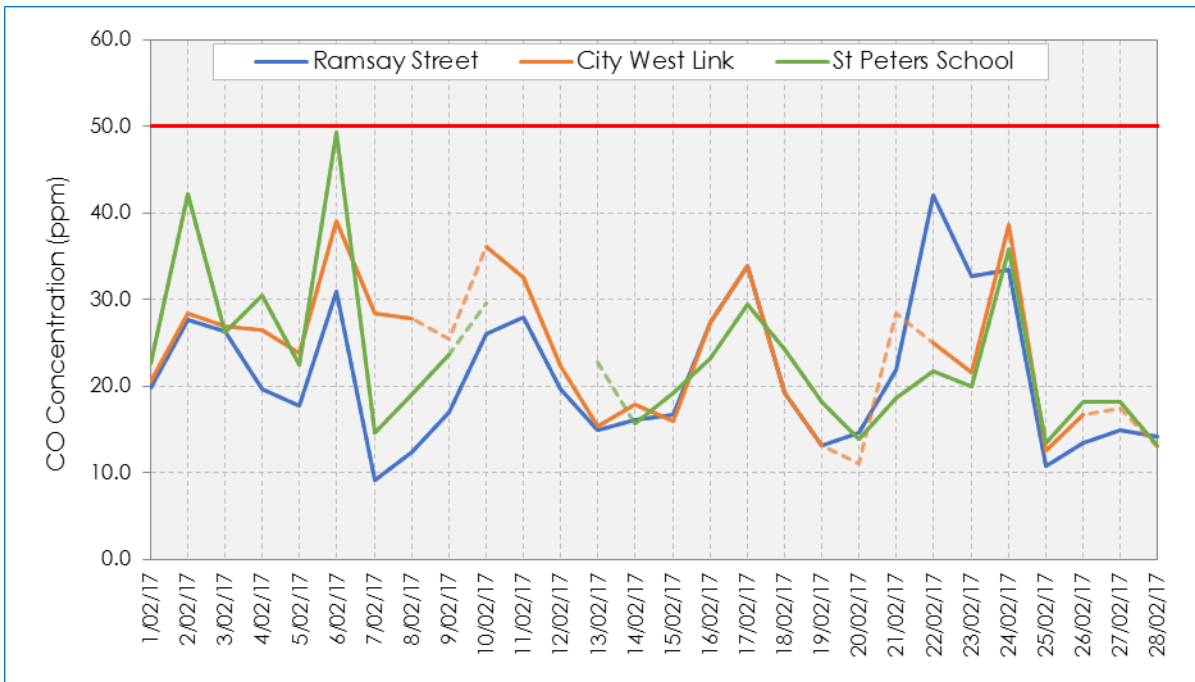
**Figure 2 CO concentrations at M4-M5 Link sites (eight hour rolling average)**



**Figure 3 NO<sub>2</sub> concentrations at M4-M5 Link sites (one hour average)**

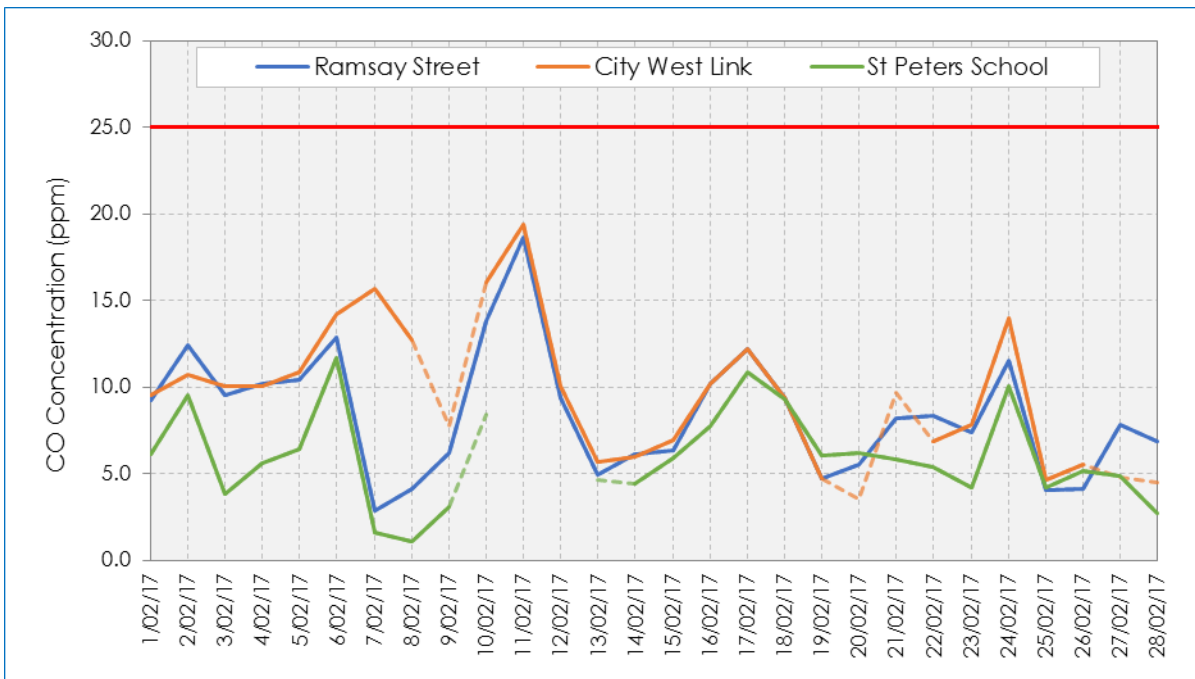


**Figure 4 PM<sub>10</sub> concentrations at M4-M5 Link sites (24 hour average)**



Note: Dashed line denotes results where less than 75% of the expected samples in the averaging period are available

**Figure 5 PM<sub>2.5</sub> concentrations at M4-M5 Link sites (24 hour average)**

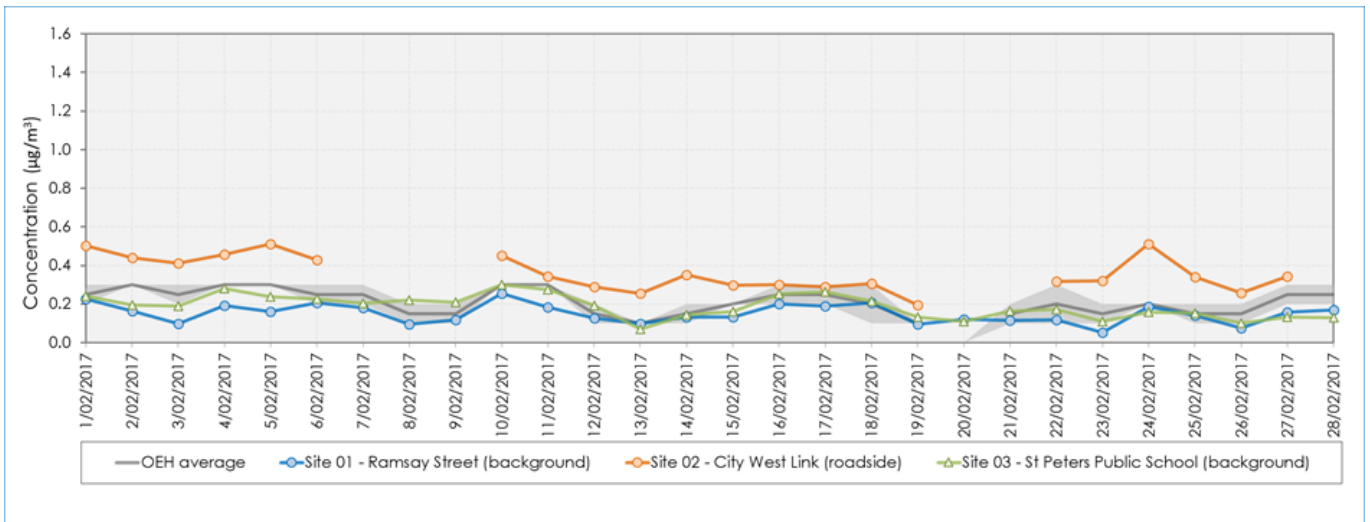


Note: Dashed line denotes results where less than 75% of the expected samples in the averaging period are available

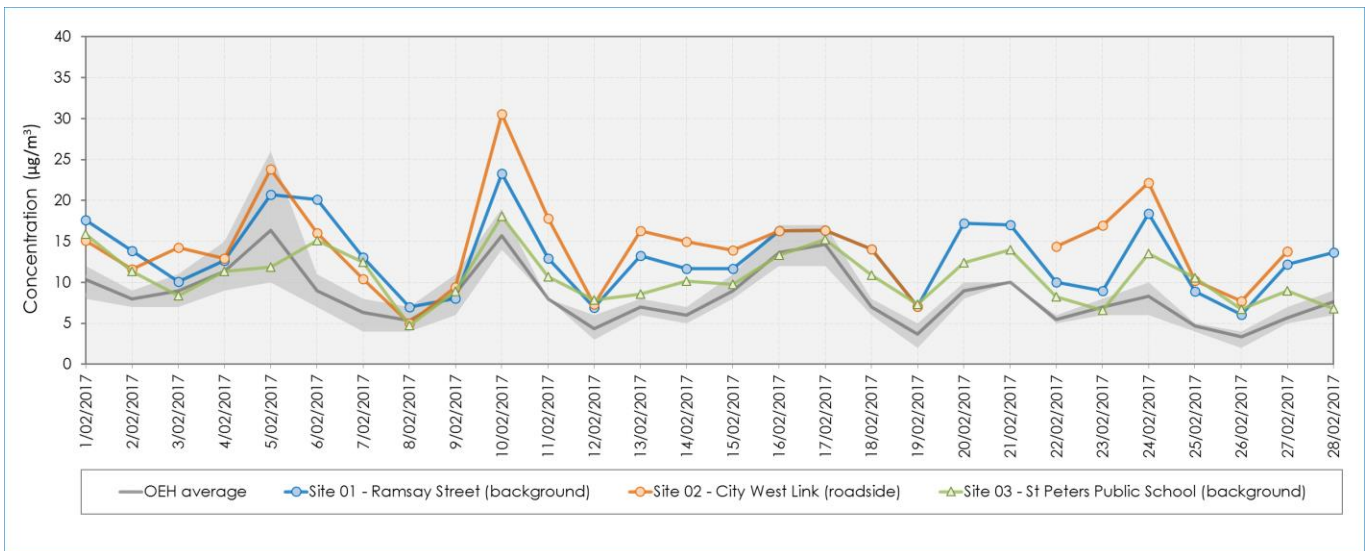
## 4.5 Comparison with data from OEH monitoring sites

The following graphs show the comparison – as time series of 24-hour averages - between the particulate concentrations at the M4-M5 Link sites and those at the OEH sites. The OEH data are shown as average values for the Chullora, Rozelle and Earlwood sites, with the grey shaded area giving the range of values across the three sites (i.e. the graphs show the maximum, average and minimum values for the three OEH sites). It should be noted that concentrations will vary between the WestConnex sites and OEH due to the differing nature of the sites (e.g. roadside vs background).

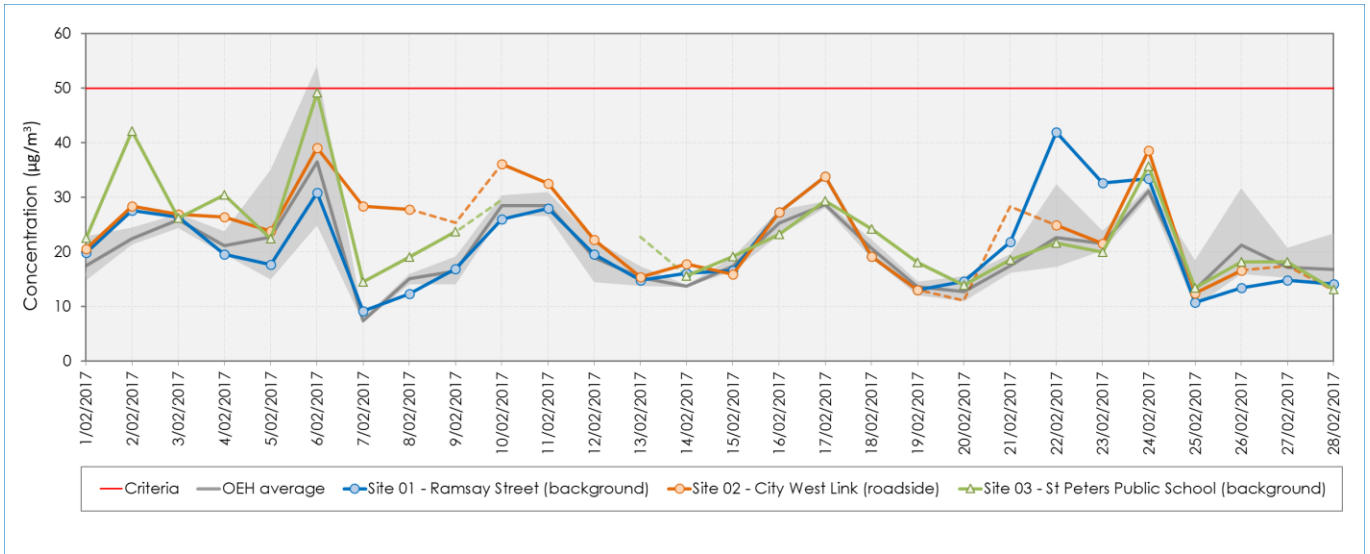
**Figure 6 CO concentrations at M4-M5 Link sites and OEH sites (24-hour average)**



**Figure 7 NO<sub>2</sub> concentrations at M4-M5 Link sites and OEH sites (24-hour average)**

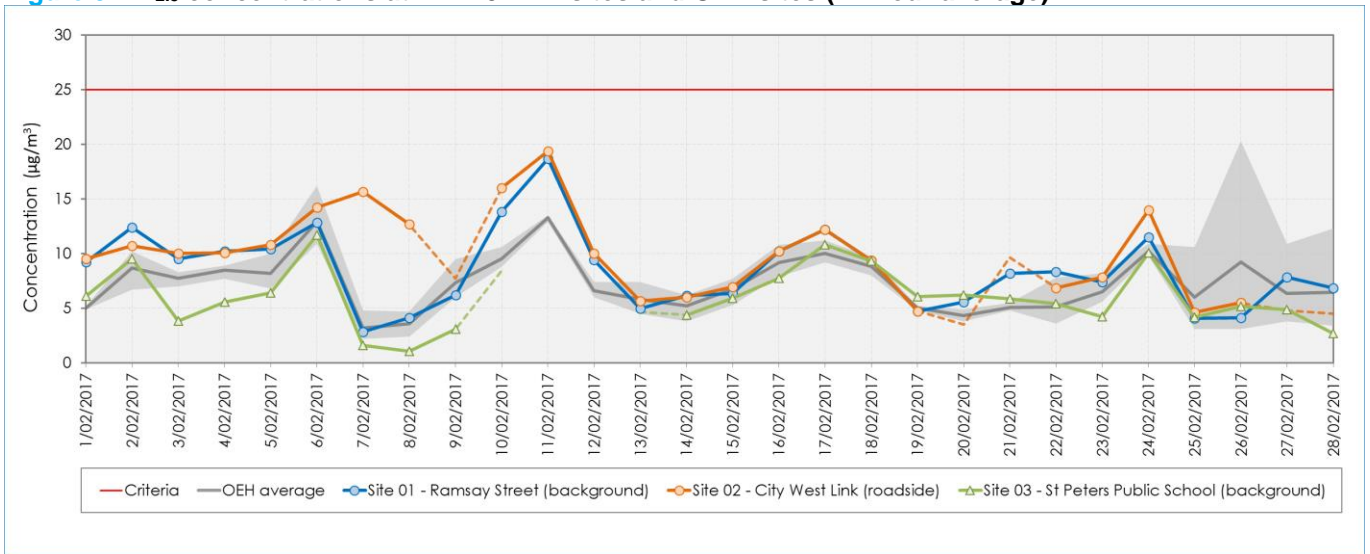


**Figure 8 PM<sub>10</sub> concentrations at M4-M5 Link sites and OEH sites (24-hour average)**



Note: Dashed line denotes results where less than 75% of the expected samples in the averaging period are available.

**Figure 9 PM<sub>2.5</sub> concentrations at M4-M5 Link sites and OEH sites (24-hour average)**



Note: Dashed line denotes results where less than 75% of the expected samples in the averaging period are available.