

Night work and road closure - Euston Road Alexandria

As part of upgrading Euston Road, new permanent street lights will be installed along Euston Road between Huntley Street and Campbell Road. Concurrently, work to install a new 132kv electricity cable along Euston Road has progressed, and now the project team is required to connect the new conduits into an electrical bay located at the intersection of Euston Road and Campbell Road. This would require Euston Road between Campbell Road and Sydney Park Road to be closed during the works.

Timing of work

Four shifts of night work are required to complete the work: **Monday 25 September to Wednesday 27 September** between **9pm and 6am** and **Friday 29 September** between **9pm and 6am**. This work will be conducted at night when traffic volumes are lower for the safety for workers, motorists and pedestrians.

Traffic changes

Euston Road between Campbell Road and Sydney Park Road will be closed during this work except for emergency and local access. This means that between **9pm – 6am** on **Monday 25 September to Wednesday 27 September** and between **9pm and 6am Friday 29 September** there will be local access only for business along Euston Road. Signage and traffic control will be available to assist motorists during temporary traffic changes. **Euston Road businesses are encouraged to use Burrows Road property access if available.**

Scope of work

The night work includes concrete barriers and signage along the road. Noise impact from the work is expected to be moderate.

To prepare for the conduit installation some trees will be removed on the eastern verge of Euston Road. The trees being removed have been assessed by an accredited arborist and are recorded in a tree report published on the WestConnex website.

The conduit installation involves potholing and digging a trench along the footpath and verge at the intersection. The trenching will start at the south end of Euston Road and head east into the site established at Campbell Road and Burrows Road. Once the conduits are installed, the trenches will be backfilled and the verge and footpath will be reinstated. Please see image overleaf for the location of the work site.

Equipment used

Equipment to be used during this work will include compactor, road saw, concrete corer, tip truck, hand tools, chainsaw, rock breaker, cherry picker, hiab, tree grinder, light vehicles, lighting towers, and excavators.

Minimising community impact

Every effort will be made to minimise noise and light spill associated with this work by:

- Scheduling noisy work to take place early in the night where possible
- Turning off equipment and vehicles when not in use
- Using non-tonal reversing beepers on all machinery
- Directing noise generating equipment and lights away from residential properties where possible
- Eco barriers will be in place to reduce noise.

For more information

✉ info@newm5.com.au
☎ 1800 660 248
🌐 westconnex.com.au
📱 [f](#) [t](#) [in](#)

Constructed by





Easing congestion

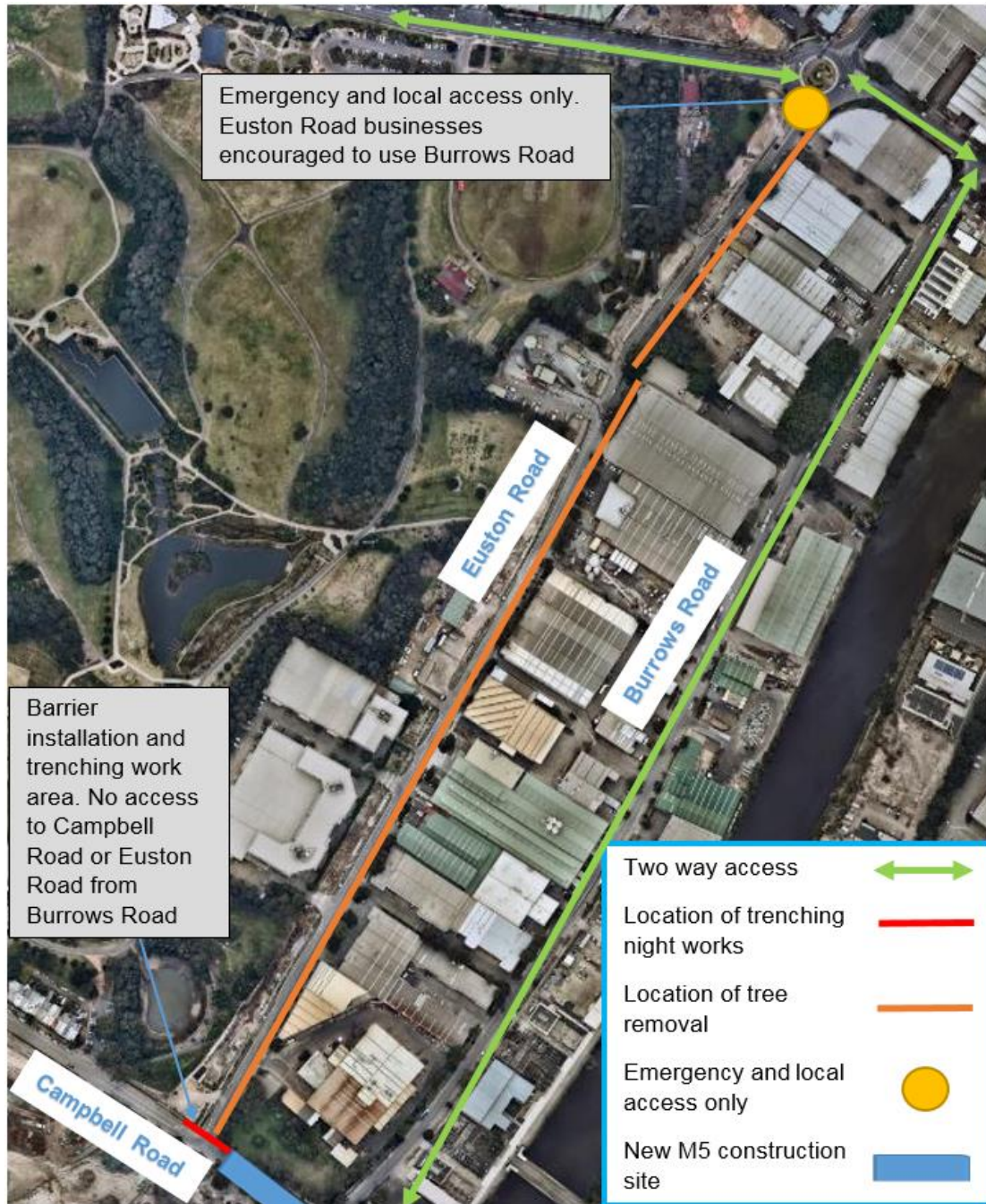


Creating jobs



Connecting communities

Traffic changes Monday 25 September until Wednesday 27 September and Friday 29 September 9pm to 6am



Notification No. 280



We speak your language

To learn more simply visit westconnex.com.au/yourlanguage. Need an interpreter? Call the Translating and Interpreting Service on 131 450