

17 August 2016

Pedestrian diversions - Haberfield

Work is underway on WestConnex which involves widening and extending the M4 and M5 and joining them to create a free-flowing motorway network.

The M4 East will extend the existing M4 from Homebush to Haberfield via underground twin tunnels, each 5.5 kilometres in length and among the widest in the southern hemisphere. They will allow for three lanes of traffic in each direction, saving travel time for motorists and taking traffic off local roads. For more information, visit westconnex.com.au/M4East.

From **Monday, 22 August 2016** a number of pedestrian diversions will be in place to safely carry out construction works on Dobroyd Parade and Wattle Street, Haberfield. Please see maps overleaf for further information. A summary of the closures and alternative routes is outlined below:

Footpath closure and diversion - Dobroyd Parade, Haberfield

- The pedestrian footpath along the northern side of Dobroyd Parade (eastbound), between the Ingham Avenue footbridge and the pedestrian footbridge opposite Crane Avenue, Haberfield will be closed for six months.
- The pedestrian detour is over the Ingham Avenue footbridge and along the northern side the Iron Cove Creek to the pedestrian footbridge opposite Crane Avenue, Haberfield.

Footpath closure and diversion - Wattle Street, Haberfield

- The pedestrian footpath along the southern side of Wattle Street (westbound), between Parramatta Road and Ramsay Street, Haberfield will be closed until 2019. Pedestrians can cross Wattle Street at the intersections of Wattle Street and Parramatta Road or Wattle Street and Ramsay Street (existing pedestrian crossing points).
- The pedestrian detour is along the northern side of Wattle Street (eastbound), between Parramatta Road and Ramsay Street, Haberfield.

If you travel along the route, please allow extra travel time and follow the direction of traffic controllers and signage. Access to properties will be maintained at all times.

If you have an enquiry or complaint about this work, please contact toll free 1800 660 248 and ask to speak to a member of the M4 East team or email info@M4East.com.au.

Notification reference: N097

ABOUT WESTCONNEX

WestConnex is part of a broader transport plan for Sydney which includes improved public transport, such as Sydney Metro and light rail, as well as better, more reliable motorway solutions. More than two-thirds of WestConnex will be built underground. Once complete, motorists will be able to avoid up to 52 sets of traffic lights and enjoy significant travel time savings.

For more information

✉ info@M4East.com.au
☎ 1800 660 248
🌐 westconnex.com.au
📱 [f](#) [t](#) [in](#)

Drop in to the Community Information Centre

Open 9:00am to 5:00pm Monday to Friday
(excluding public holidays)
52 Railway Parade, Burwood NSW 2134

Constructed by





Easing congestion

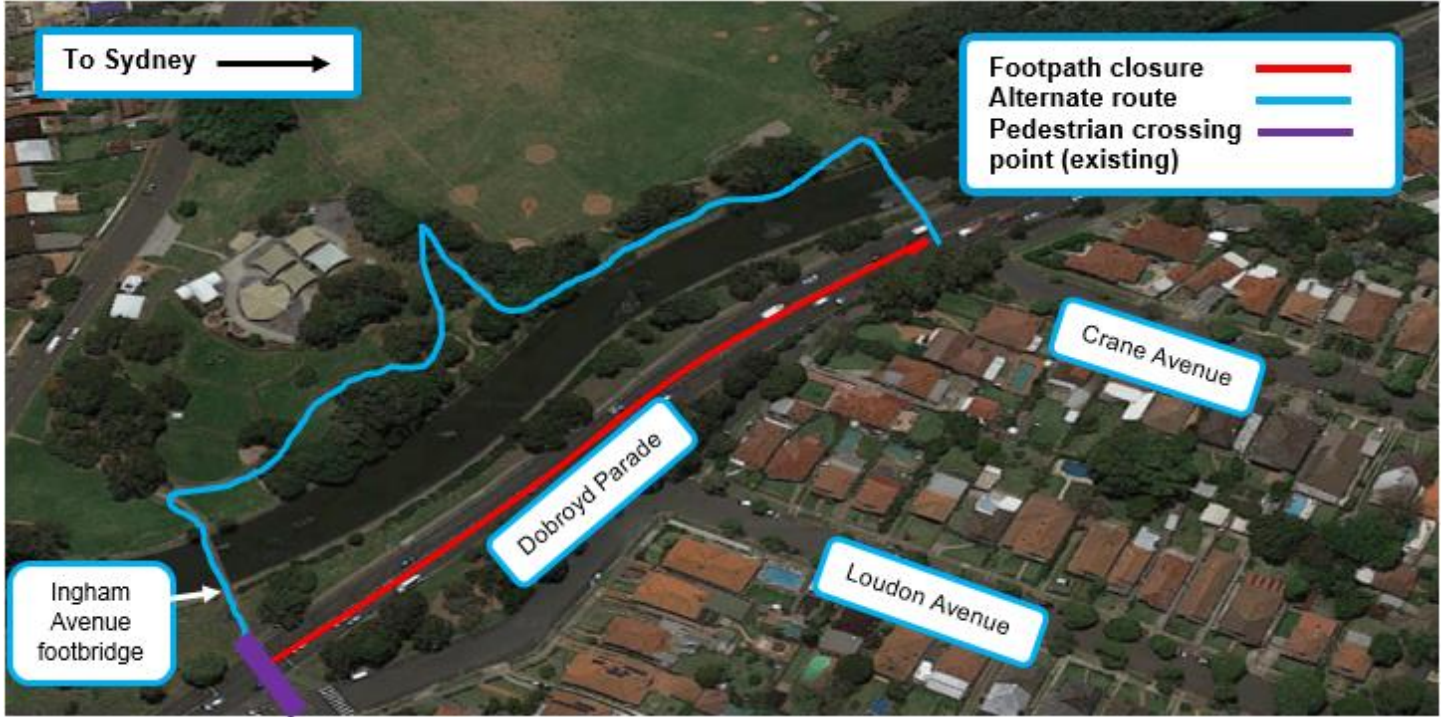


Creating jobs



Connecting communities

Footpath closure and diversion - Dobroyd Parade (eastbound)



Map data © 2016 Google

Footpath closure and diversion - Wattle Street (westbound)



Map data © 2016 Google



We speak your language

To learn more simply visit westconnex.com.au/yourlanguage. Need an interpreter? Call the Translating and Interpreting Service on 131 450