

7 July 2017

Night work – signage investigation, Concord Road, Concord

Work is underway on WestConnex which involves widening and extending the M4 and M5 and joining them to create a free-flowing motorway network.

The M4 East will extend the existing M4 from Homebush to Haberfield via underground twin tunnels, each 5.5 kilometres in length and among the widest in the southern hemisphere. They will allow for three lanes of traffic in each direction, saving travel time for motorists and taking traffic off local roads. For more information, visit westconnex.com.au/M4East.

From **Wednesday, 12 July 2017**, night work will commence along Concord Road. A map showing the work area is provided overleaf.

This work will take place **between 7.00 pm and 5.00 am** to reduce impacts on road users and ensure the safety of workers and motorists. If the work cannot be completed during this period, it will be rescheduled.

This work is expected to take **six shifts to complete**, weather permitting, and will include:

- pot holing
- service investigation
- backfilling with permanent restoration to follow.

Temporary lane closures on Concord Road will be in place during this night work. Please allow extra travel time and follow the signage and the direction of traffic controllers.

Equipment used throughout the work will include excavators, saw cutters, trucks, compactors, traffic control, generators, lighting towers and power tools.

There may be some noise associated with this work, however every effort will be made to minimise the impact of work, including by using non-tonal reversing beepers on all machinery, turning off equipment and vehicles when not in use and, where possible, directing noisy equipment away from residences.

If you have an enquiry or complaint about this work, please contact toll free 1800 660 248 and ask to speak to a member of the M4 East team or email info@M4East.com.au.

Notification reference: N229

ABOUT WESTCONNEX

WestConnex is part of a broader transport plan for Sydney which includes improved public transport, such as Sydney Metro and light rail, as well as better, more reliable motorway solutions. More than two-thirds of WestConnex will be built underground. Once complete, motorists will be able to avoid up to 52 sets of traffic lights and enjoy significant travel time savings.

For more information

✉ info@M4East.com.au
☎ 1800 660 248
🌐 westconnex.com.au
📱 [f](#) [t](#) [in](#)

Drop in to the Community Information Centre

Open 9:00am to 5:00pm Monday to Friday
(excluding public holidays)
52 Railway Parade, Burwood NSW 2134

Constructed by





Easing
congestion

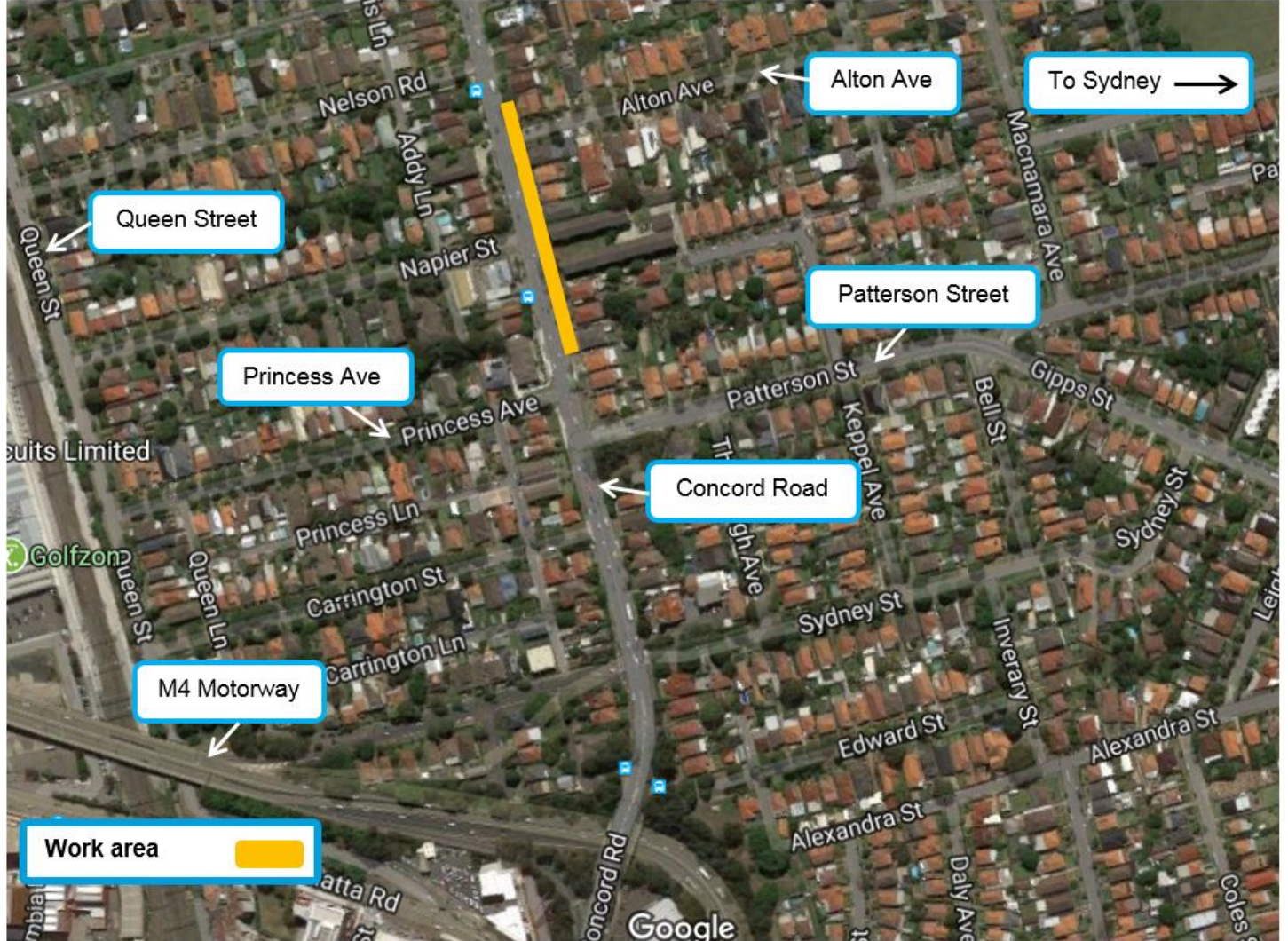


Creating
jobs



Connecting
communities

Location of night work – Concord Road, Concord.



Map data © 2017 Google



We speak your language

ENGLISH

To learn more, simply visit westconnex.com.au/yourlanguage. Need an interpreter? Call the Translating and Interpreting Service on **131 450**.

ARABIC

لمعرفة المزيد، ما عليك سوى زيارة westconnex.com.au/yourlanguage. بحاجة إلى مترجم؟ اتصل بخدمة الترجمة الكتابية والترجمة الشفوية على الرقم **131450**.

CHINESE

如需了解更多详情，请访问 westconnex.com.au/yourlanguage。如需翻译，请拨打翻译与口译热线 **131 450**。

GREEK

Για να μάθετε περισσότερα, απλά επισκεφθείτε το westconnex.com.au/yourlanguage. Χρειάζεστε διερμηνεία; Καλέστε την

HINDI

अधिक जानने के लिए केवल westconnex.com.au/yourlanguage पर देखें। क्या आपको दुभाषिण की ज़रूरत है? अनुवाद व दुभाषिया सेवा को **131 450** पर फ़ोन करें।

ITALIAN

Per saperne di più, vai semplicemente al sito westconnex.com.au/yourlanguage. Hai bisogno di un interprete? Chiama il servizio d'interpretazione e traduzione al numero **131 450**.

KOREAN

더 자세히 알고 싶으시면, 바로 westconnex.com.au/yourlanguage 를 방문하시면 됩니다. 통역사가 필요하십니까? 번역 및 통역 서비스에 **131 450**으로 연락하십시오.

VIETNAMESE

Để biết thêm, chỉ cần tới trang mạng westconnex.com.au/yourlanguage. Cần thông dịch viên? Hãy điện thoại cho Dịch vụ Thông Phiên Dịch ở