

21 August 2017

Drainage work – Sydney Street (west), North Strathfield

From **Monday 28 August 2017**, work will commence along Sydney Street (west), North Strathfield to install new drainage associated with the Concord Road Interchange work. A map showing the location of the work is provided overleaf.

To minimise the impact to residents, work has been scheduled to take place **between 7.00am and 6.00pm Monday to Friday and 8.00am and 1.00pm on Saturday**, where possible. However, to ensure the safety of workers and motorists, some night work may be required. Residents will be notified separately when this work is scheduled.

This work will take approximately **ten weeks** to complete, weather permitting and will involve:

- installing temporary traffic barriers and signage
- relocation of noise walls and existing barriers
- clearing and removing vegetation
- potholing for investigation and location of existing services
- utilities installation
- trenching to install storm water drainage
- installing and modifying pavements for associated drainage work
- temporary remediation work, prior to permanent restoration
- Installation of road furniture including kerbs and barriers.

Equipment used during the work will include excavators, vacuum trucks, concrete saws, core drills, chainsaws, cranes, trucks, compactors, road line markers, graders, asphalt laying plant, concrete pavers, small tools, hand tools and lighting equipment.

Traffic control and pedestrian management will be in place to ensure the safety of motorists, residents and workers. Parking will be restricted in the vicinity of the works, and contra flow traffic arrangements will be in place during this time. If you travel along the work route, please allow extra travel time and follow the signage and direction of traffic controllers.

There will be some noise associated with this work, however, every effort will be made to minimise the impact of work, including using non-tonal reversing beepers on all machinery at night, turning off equipment and vehicles when not in use and, where possible, directing noisy equipment away from residences. All sites will be restored to their previous condition.

If you have an enquiry or complaint about this work, please contact toll free 1800 660 248 and ask to speak to a member of the M4 East team or email info@M4East.com.au.

Notification No. N235

ABOUT WESTCONNEX

WestConnex is part of a broader transport plan for Sydney which includes improved public transport, such as Sydney Metro and light rail, as well as better, more reliable motorway solutions. More than two-thirds of WestConnex will be built underground. Once complete, motorists will be able to avoid up to 52 sets of traffic lights and enjoy significant travel time savings.

For more information

✉ info@M4East.com.au
☎ 1800 660 248
🌐 westconnex.com.au
📱 [f](#) [t](#) [in](#)

Drop in to the Community Information Centre

Open 9:00am to 5:00pm Monday to Friday
(excluding public holidays)
52 Railway Parade, Burwood NSW 2134

Constructed by





Easing congestion

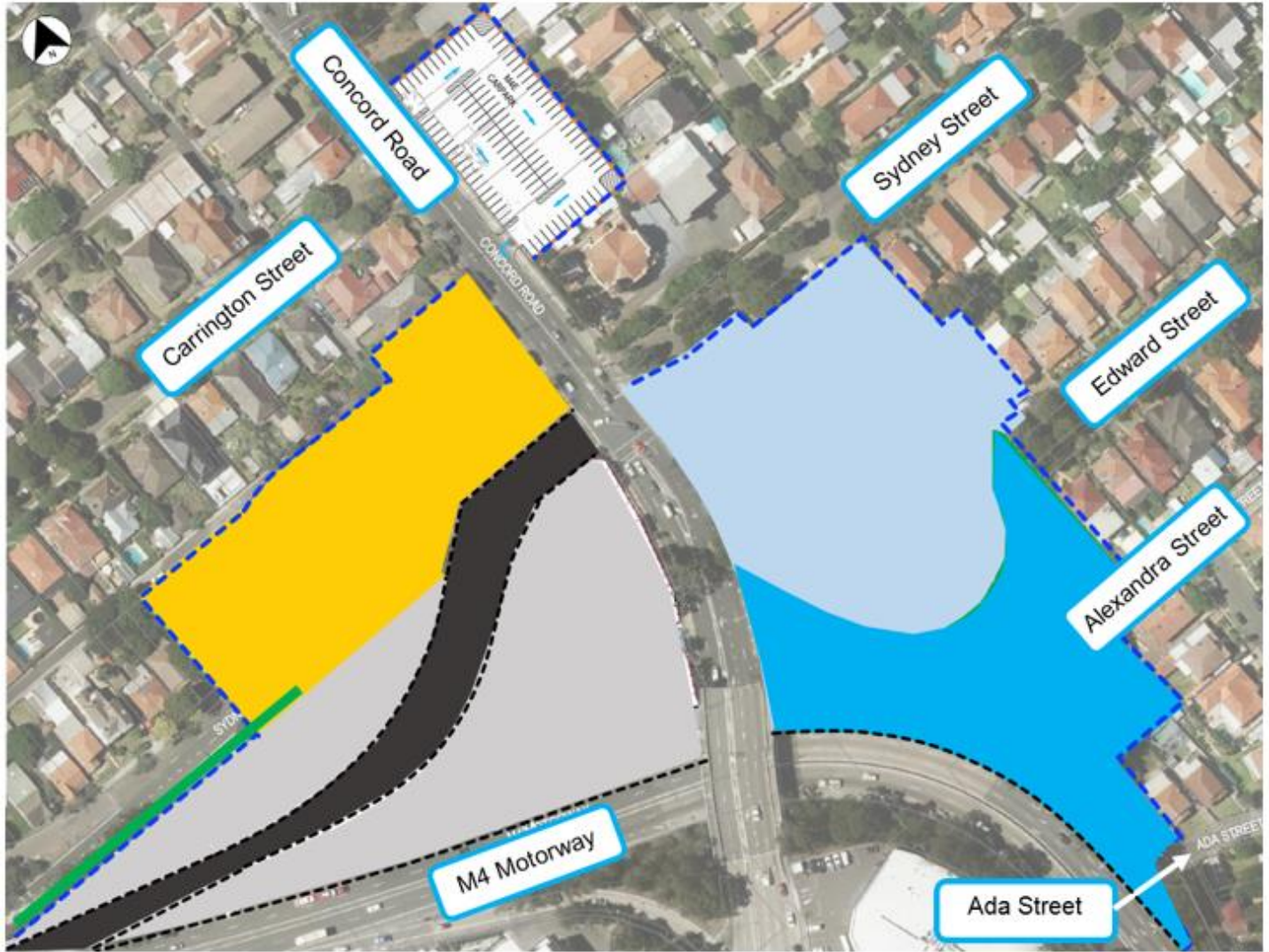



Creating jobs



Connecting communities

Location of drainage work on Sydney Street (west), North Strathfield



Location of drainage work 

Map data © 2017 Google



We speak your language

To learn more simply visit westconnex.com.au/yourlanguage. Need an interpreter? Call the Translating and Interpreting Service on 131 450