

7 September 2017

Site layout changes – Haberfield

As the project transitions into the next stage of construction, the site layouts of the Wattle Street Civil Site and Northcote Street Tunnel Site will slightly change, details below:

Wattle Street Civil Site:

- New mobile lunch room in Reg Coady Reserve (within the site)
- New access gate on Wattle Street
- New access gates on Ramsay Street
- New double stacked office building.

Northcote Street Tunnelling Site:

- New double stacked office building for the Mechanical and Electrical team.

There may be some noise associated with the installation of these changes, however every effort will be made to minimise the impact of work, including turning off equipment and vehicles when not in use and, where possible, directing noisy equipment away from residences.

If you have an enquiry or complaint about this work, please contact toll free 1800 660 248 and ask to speak to a member of the M4 East team or email info@M4East.com.au.

Notification reference: N239

ABOUT WESTCONNEX

WestConnex is part of a broader transport plan for Sydney which includes improved public transport, such as Sydney Metro and light rail, as well as better, more reliable motorway solutions. More than two-thirds of WestConnex will be built underground. Once complete, motorists will be able to avoid up to 52 sets of traffic lights and enjoy significant travel time savings.

For more information

✉ info@M4East.com.au
☎ 1800 660 248
🌐 westconnex.com.au
📱 [f](#) [t](#) [in](#)

Drop in to the Community Information Centre

Open 9:00am to 5:00pm Monday to Friday
(excluding public holidays)
52 Railway Parade, Burwood NSW 2134

Constructed by





Easing congestion

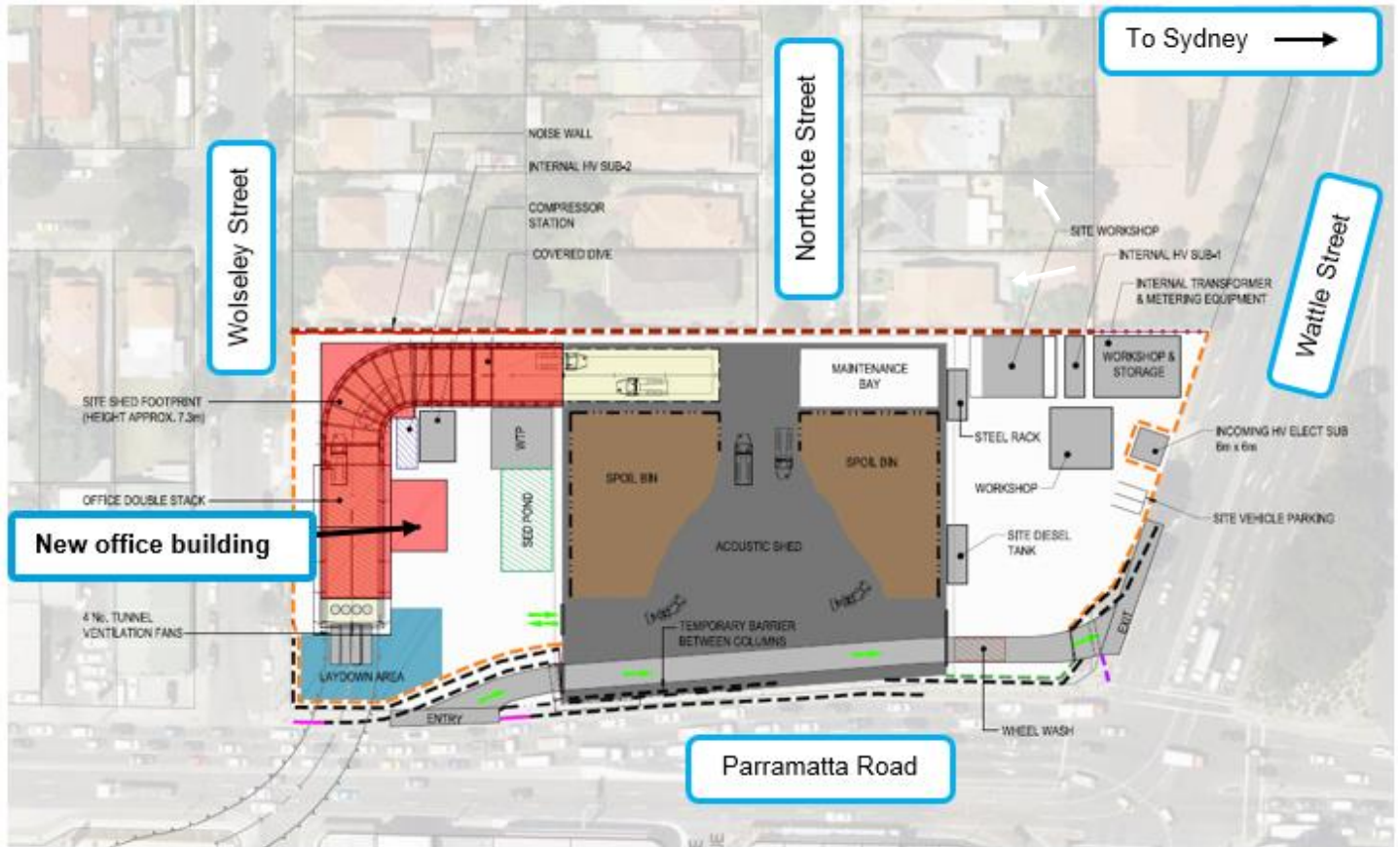


Creating jobs



Connecting communities

Northcote Street Tunnelling site – Parramatta Road, Haberfield.



Map data © 2017



Easing congestion

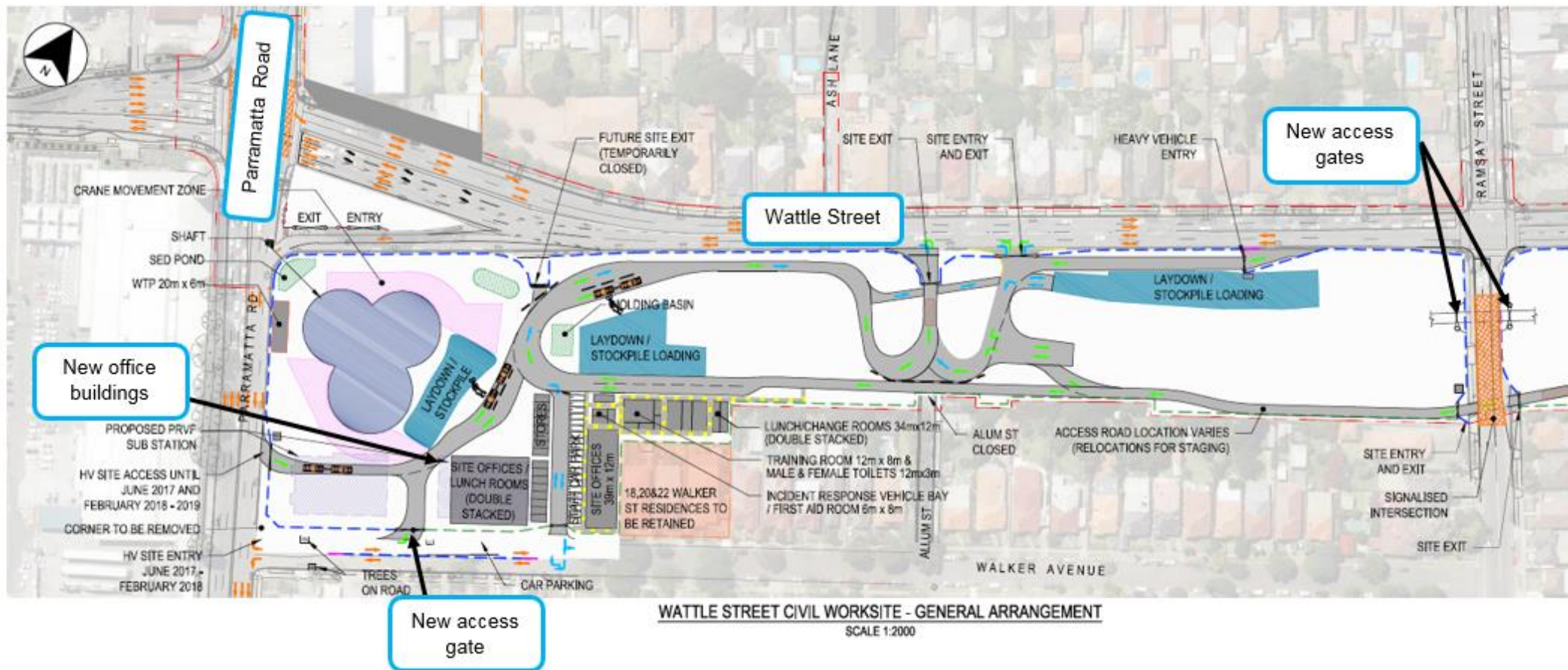


Creating jobs



Connecting communities

Wattle Street Civil site – Wattle Street, Haberfield.





Easing congestion

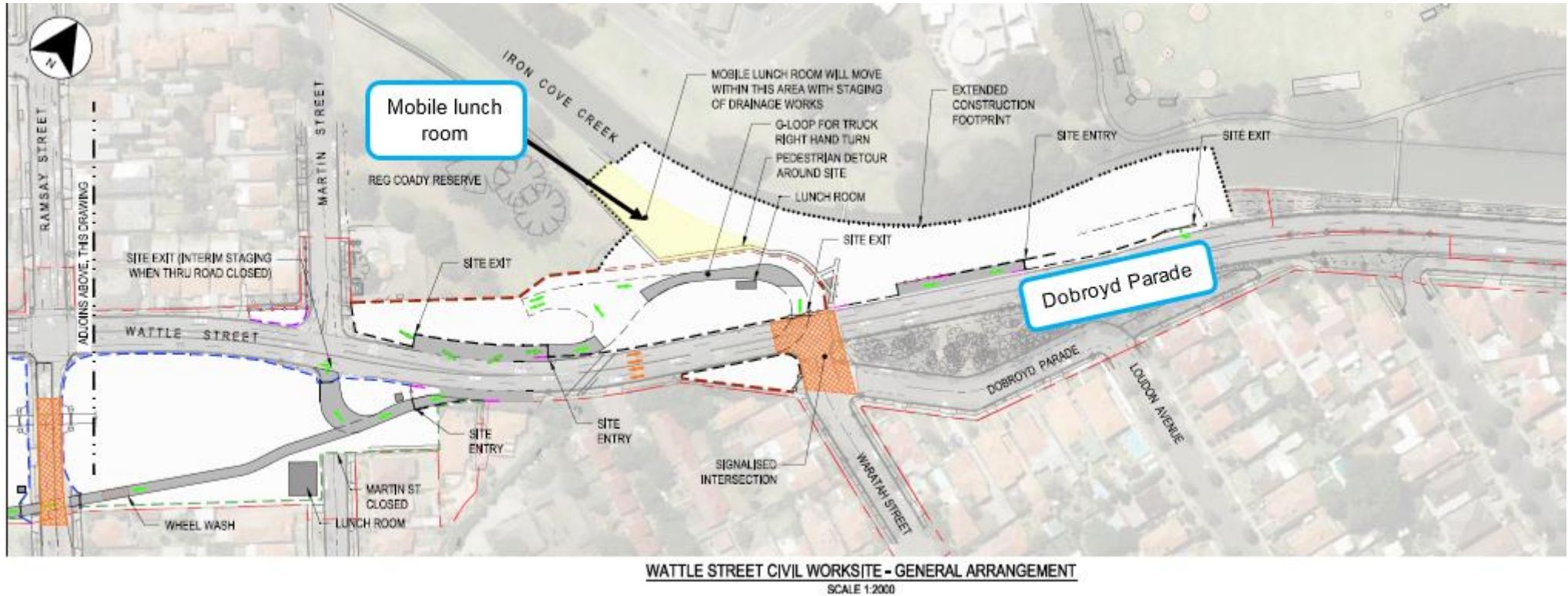


Creating jobs



Connecting communities

Wattle Street Civil site cont. – Wattle Street, Haberfield.



We speak your language

To learn more simply visit westconnex.com.au/yourlanguage. Need an interpreter? Call the Translating and Interpreting Service on 131 450