



Construction work - M4 Motorway, North Strathfield

Further to notification (N272d), from Friday, 15 June 2018, night work will continue on the M4 Motorway between Parramatta Road and Sydney Street, North Strathfield. A map showing the location of the work is provided overleaf.

This work is required to construct the bridge which will allow access from Concord Road to the New M4 westbound, as well as to install the associated Intelligent Transport System.

This work is expected to take up to two months to complete, weather permitting. You will be updated monthly of the progress of this work.

What we're doing

The work will involve:

- service investigation
- installing precast concrete slabs/decks on the bridge structure
- concrete work including formwork and piling
- installing drainage
- backfilling retaining walls
- installing barriers, guard rails, noise wall panels, and concrete panels
- ITS installation including saw cutting, excavation, conduit install and backfilling
- mobilising and demobilising a 100t mobile crane.

Equipment used will include a mobile crane, franna crane, concrete boom pumps, slip form paver, excavator, Elevated Work Platform (EWP), plate compactors, hammer drills, concrete trucks, piling rig, hand tools, lighting equipment and concrete vibration equipment.

How this affects you

The M4 Motorway will be closed **westbound** between Parramatta Road and the Powells Creek on-ramp and **eastbound** between the Sydney Street off-ramp and Parramatta Road.

There will also be closures on Concord Road from Parramatta Road to Sydney Street, Concord.



Constructed by ^{If you travel along the}



When

Fri 15 June to Sun 15 July 2018

Hours of operation

- 7am to 6pm Mon to Fri
- 8am to 1pm on Sat
- 8pm to 5am Mon to Sun

Where

M4 Motorway, North Strathfield and Concord Road, Concord

For more information

Drop in to the Community Information Centre

52 Railway Parade,
Burwood NSW 2134

We speak your language



Visit westconnex.com.au.

Need an interpreter?

Call the Translating and Interpreting Service on

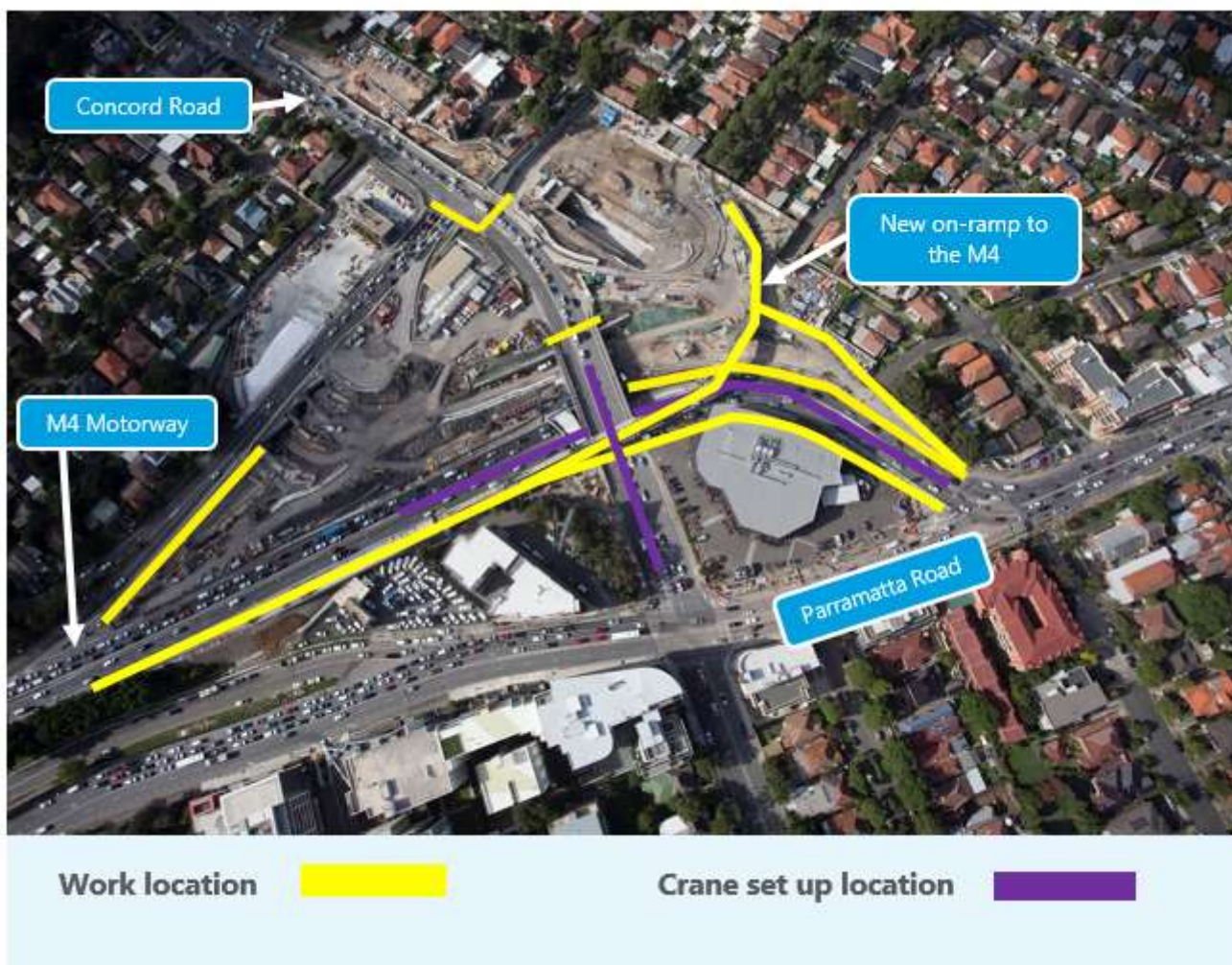
131 450.

Notification No.N272e

work route, please allow extra travel time and follow the signage and direction of traffic controllers. Please visit livetraffic.com for closure dates and times.

There will be some noise associated with this work and every effort will be made to minimise this including by turning off equipment and vehicles when not in use and directing noisy equipment away from residences where possible. If you have an enquiry or complaint about this work, please contact toll free 1800 660 248 and ask to speak to a member of the M4 East team or email info@m4east.com.au.

Location of construction work – M4 Motorway, North Strathfield



Map data © 2018 Google