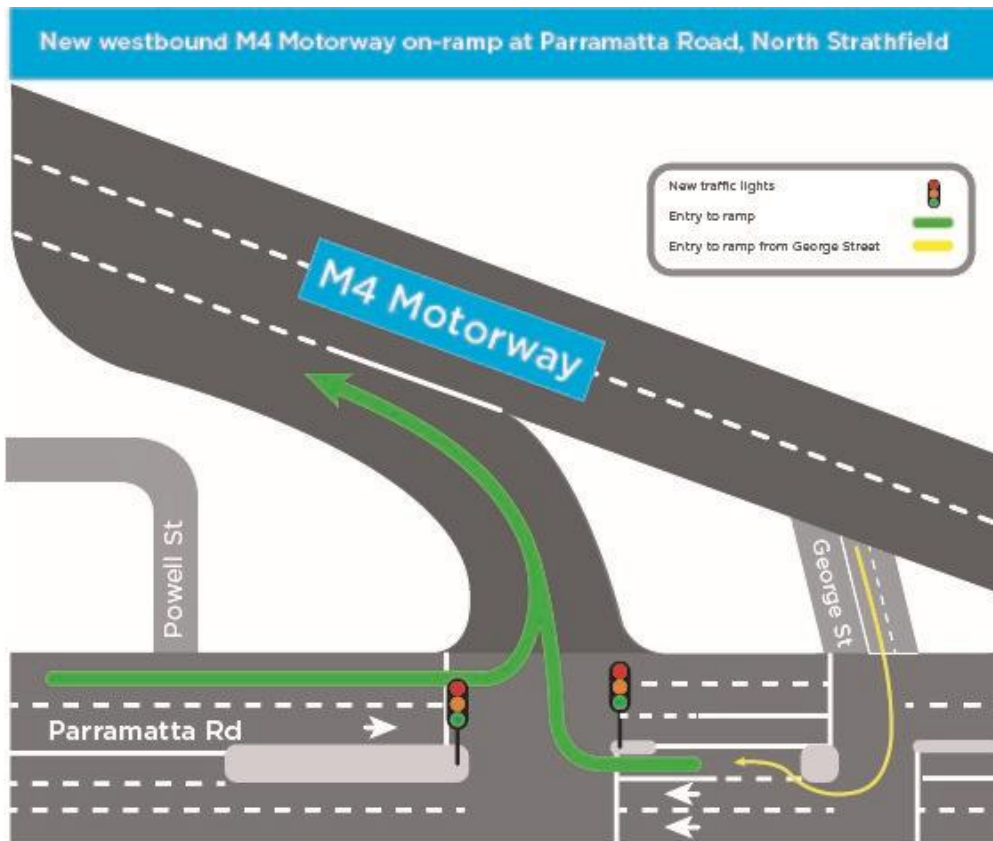


New M4 Motorway on-ramp – Parramatta Road, North Strathfield

Further to notification N274, the new Powells Creek on-ramp to the M4 Motorway westbound will now be open to traffic from **Saturday 16 December 2017**. This on-ramp replaces the permanently closed M4 Motorway westbound on-ramp from Concord Road, North Strathfield.

This is a major milestone for the M4 East project, as it is the first piece of infrastructure completed and open to the public.

The map below illustrates how to access the new on-ramp from Parramatta Road, North Strathfield, shown in green. Motorists wishing to access the on-ramp from George Street must be in the right-hand lane when turning onto Parramatta Road in order to use the turning lane for the new on-ramp.



Notification Reference: N274a

We speak your language
To learn more simply visit westconnex.com.au/yourlanguage. Need an interpreter? Call the Translating and Interpreting Service on 131 450

ABOUT WESTCONNEX

WestConnex is part of a broader transport plan for Sydney which includes improved public transport, such as Sydney Metro and light rail, as well as better, more reliable motorway solutions. More than two-thirds of WestConnex will be built underground. Once complete, motorists will be able to avoid up to 52 sets of traffic lights and enjoy significant travel time savings.

Constructed by





Easing
congestion



Creating
jobs



Connecting
communities

