



Footpath restoration Crane Avenue, Haberfield

Following recent work outlined in Notification (N317b), from Monday, 3 September 2018 work will commence to permanently restore the footpath and affected driveway on Crane Avenue, Haberfield. A map showing the location of the work is provided overleaf.

This work is expected to take up to 2 weeks to complete, weather permitting.

What we're doing

The remaining work will involve:

- permanently restoring the footpath and affected driveway.

Equipment used during the work will include trucks, concrete agitators, concrete saws and hand tools.

The approved Traffic and Access Management Plan (TAMP) for this work allows vehicles to access Crane Avenue via Waratah Street and Chelmsford Avenue from Dobroyd Parade (City-West Link).

How this affects you

There will be some noise associated with this work and every effort will be made to minimise this by turning off equipment and vehicles when not in use and where possible, directing noisy equipment away from residences.

Traffic control and pedestrian management will be in place to ensure the safety of motorists, residents and workers. Parking may be restricted in the vicinity of the work to ensure this work can be completed on day shift.

If you have an enquiry or complaint about this work, please contact toll free 1800 660 248 and ask to speak to a member of the M4 East team or email info@M4East.com.au.

When

Mon 3 Sept to Fri 14 Sept 2018

Hours of operation

- 7am to 6pm Mon to Fri

Where

Dobroyd Parade and Crane Avenue, Haberfield.

For more information

Drop in to the Community Information Centre

52 Railway Parade, Burwood

9am to 5pm

Monday to Friday

(excluding public holidays)

We speak your language



Need an interpreter?

Call the Translating and Interpreting Service on **131 450**.

Notification No.317c



Australian Government

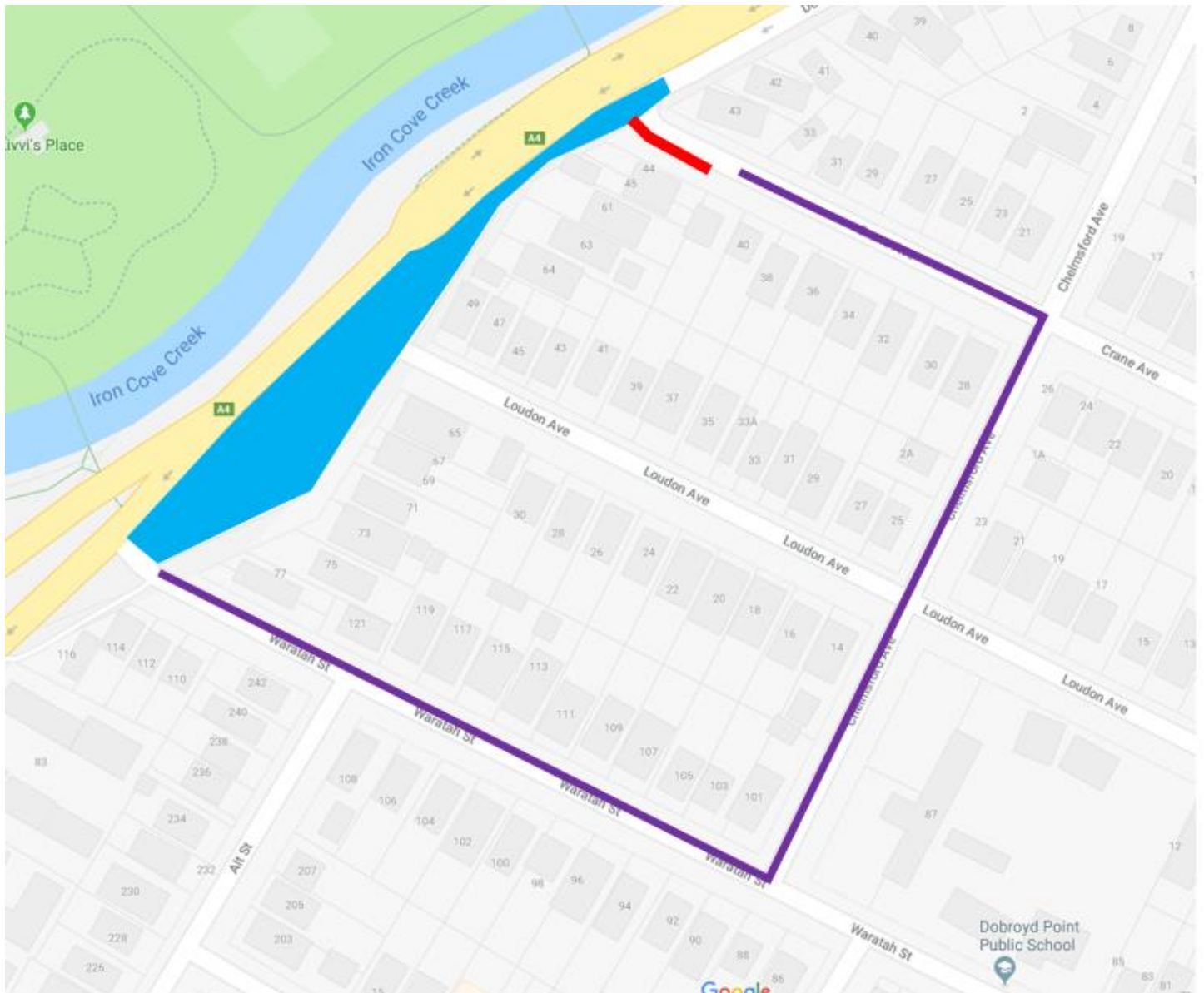
BUILDING OUR FUTURE



Constructed by



Location of work - Crane Avenue, Haberfield



Work location 

Work site 

TAMP route 

Map data © 2018 Google