



## Road widening - Concord Road, Concord

From Friday 20 April 2018, work will continue along Concord Road, Concord. This work will facilitate the widening of Concord Road, which will form part of the new Concord Road Interchange. This work is expected to take up to three months to complete. As work progresses, residents will be updated monthly. A map showing the location of the work is provided overleaf.

To ensure the strength of concrete pavements, specialist concrete cutting is required as the concrete is curing. This activity is known as soft cutting of concrete. Pending approval, residents will be notified of soft cutting work separately.

### What we're doing

The work will involve:

- service investigation and installation
- installing temporary traffic barriers and signage including piling
- demolition, excavation and installation of fencing, footpaths, pavements and gutters
- clearing and removing vegetation
- drainage work including trenching and pit installation
- modifying and installing new traffic signals and street lighting (where required)
- installing tolling gantry structure and intelligent transport system infrastructure
- soft cutting of concrete (between Patterson Street and Sydney Street)

Equipment used will include excavators, piling rig, vacuum trucks, concrete saws, core drills, chainsaws, cranes, trucks, compactors, small tools, hand tools and lighting equipment.

### How this affects you

Traffic control and pedestrian management will be in place to ensure the safety of motorists, residents and workers. Access to driveways will be maintained. If you travel along the work route, please allow extra travel time and follow the signage and direction of traffic controllers.

There will be some noise associated with this work and every effort will be made to minimise this impact including by turning off equipment and vehicles when not in use and directing noisy equipment away from residences where possible.

### When

Fri 20 April to Sun 20 May

### Hours of operation

- 7am and 6pm Mon to Fri
- 8am 1pm on Sat
- 8pm and 5am Mon to Sun

### Where

Concord Road, Concord  
Sydney Street, North  
Strathfield

### For more information

Drop in to the Community Information Centre

52 Railway Parade, Burwood

9am to 5pm

Monday to Friday

(excluding public holidays)

### We speak your language



Need an interpreter?

Call the Translating and Interpreting Service on

131 450.

Notification No.N328a



Australian Government

**BUILDING OUR FUTURE**

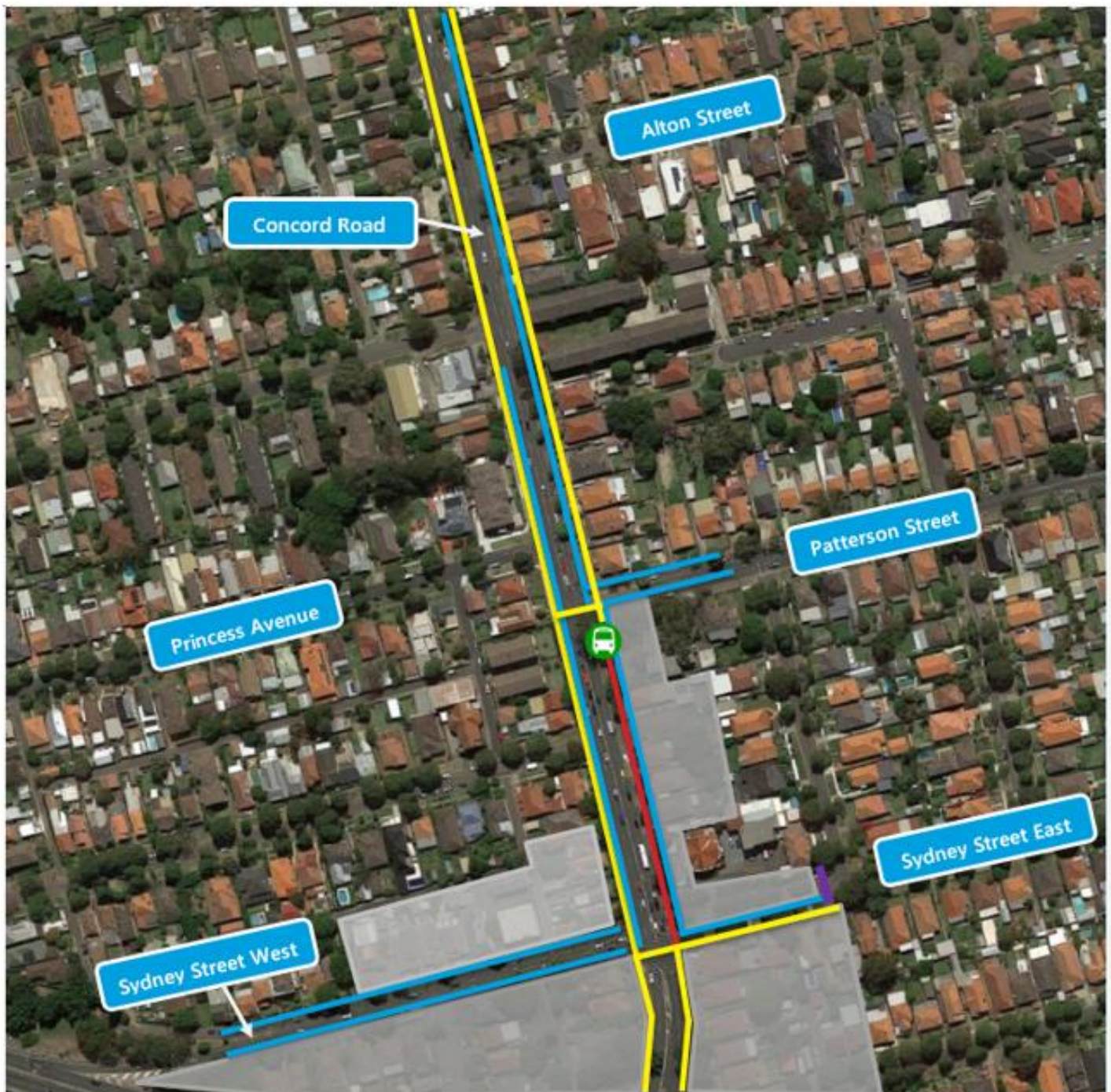


Constructed by



If you have an enquiry or complaint about this work, please contact toll free 1800 660 248 and ask to speak to a member of the M4 East team or email [info@M4East.com.au](mailto:info@M4East.com.au).

## Location of Concord Road Widening - Concord



Pedestrian walkway closure



Pedestrian walkway



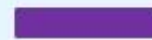
Work location



Open bus stop



Street closed (local access only)



Google maps 2018