



## Service investigation work - Dalhousie Street, Haberfield

Service location and investigation work will commence to help finalise the detailed design for the approved signage on Dalhousie Street, Haberfield, including the electronic Variable Message Sign.

A map showing the location of the work is provided overleaf.

A second round of community consultation for the proposed signage closed on Thursday, 12 April 2018. The feedback received from the community has now been provided to the relevant government authorities for consideration in the approval of the final design.

You will be notified separately when the final design has been approved.

### What we're doing

This work will involve:

- service investigation with a vacuum truck.

Equipment used during the work will include vacuum trucks, lighting equipment and hand tools.

### How this affects you

As much work as possible has been scheduled to occur during the day, however work occurring close to the road will need to be undertaken outside of standard construction hours to ensure the safety of residents, workers and motorists.

Access to properties will be maintained at all times.

There will be some noise associated with this work. Every effort will be made to minimise this by turning off equipment and vehicles when not in use and where possible, directing noisy equipment away from residences.

### When

Tues 15 to Tues 29 May  
2018

### Hours of operation

- 7am to 6pm Mon to Fri
- 9pm to 5am Sun to Fri

### Where

Dalhousie Street, Haberfield

### For more information

Drop in to the Community  
Information Centre

52 Railway Parade, Burwood

9am to 5pm

Monday to Friday

(excluding public holidays)

We speak  
your language



Need an interpreter?

Call the Translating and  
Interpreting Service on  
131 450.

Notification No.339



Australian Government

**BUILDING OUR FUTURE**



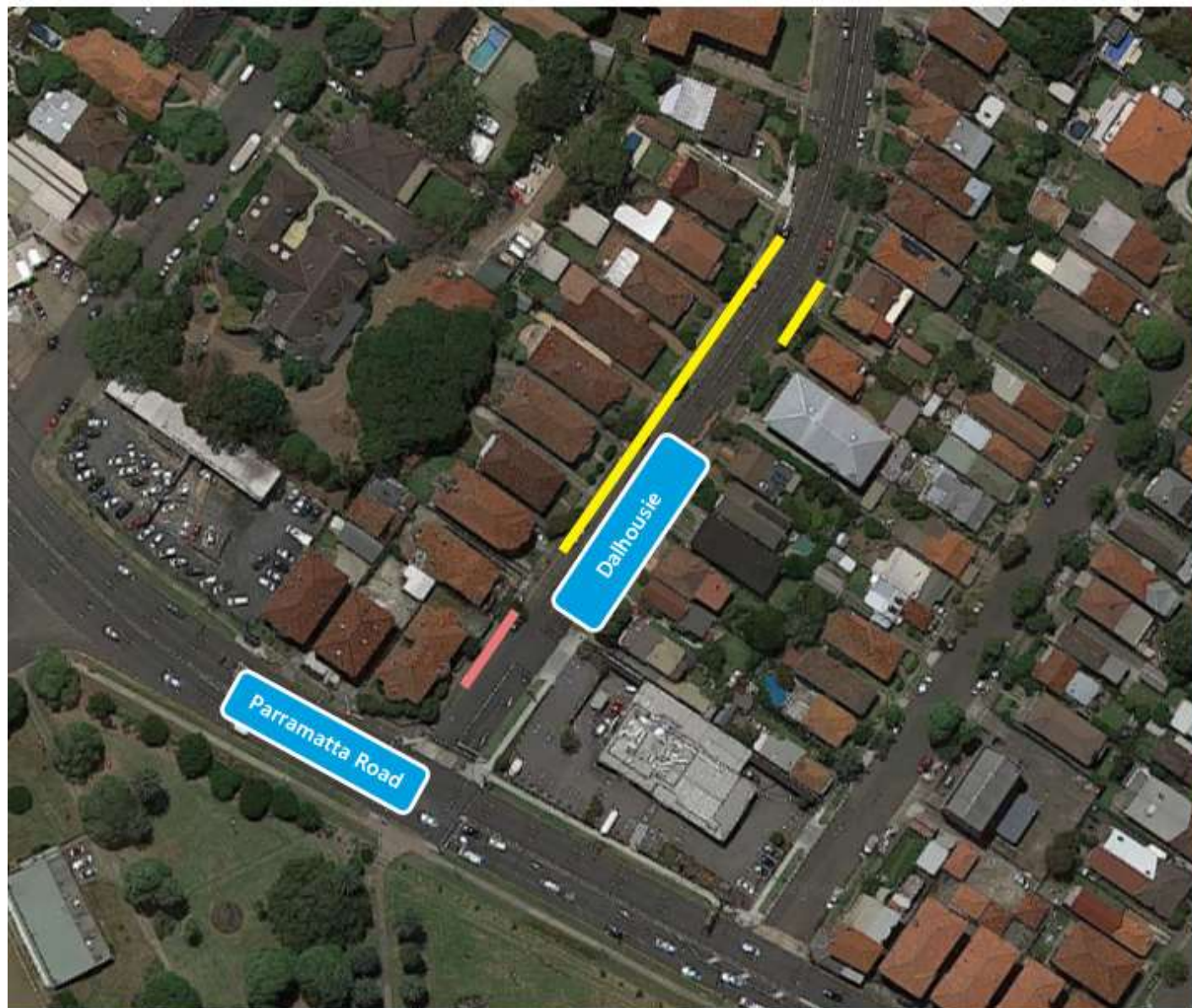
Constructed by



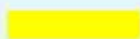
Traffic control and pedestrian management will be in place to ensure the safety of motorists, residents and workers. Parking maybe limited in the vicinity of the work site. If you travel along the route, please allow extra travel time and follow the direction of traffic controllers and signage.

If you have an enquiry or complaint about this work, please contact toll free 1800 660 248 and ask to speak to a member of the M4 East team or email [info@M4East.com.au](mailto:info@M4East.com.au).

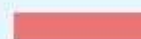
### Location of service investigation work - Dalhousie Street, Haberfield



**Work location  
(day shift)**



**Work location  
(night shift)**



Map data © 2018 Google