



ITS installation - Parramatta Road, Ashfield

From Sunday, 3 June 2018 work will commence to install ITS infrastructure along Parramatta Road, Ashfield. A contraflow will be in place as there will be lane closures on Parramatta Road. A map showing the location of the work is provided overleaf.

This work will involve:

- pavement removal (including concrete saw cutting)
- service investigation and installation
- excavation of trench and pit locations
- pit and trench installation
- installation of steel road plates
- pouring of concrete pavement, kerbs and medians
- asphalt reinstatement.

Equipment used during the work will include road saws, excavators, concrete trucks, franna crane, vacuum trucks, trucks and hand tools.

How this affects you

During this work there will be lane closures along Parramatta Road. Traffic control and pedestrian management will be in place to ensure the safety of motorists, residents and workers. If you travel along the route, please allow extra travel time and follow the direction of traffic controllers and signage.

There will be some noise associated with this work. Every effort will be made to minimise this by turning off equipment and vehicles when not in use and where possible, directing noisy equipment away from residences.

If you have an enquiry or complaint about this work, please contact toll free 1800 660 248 and ask to speak to a member of the M4 East team or email info@M4East.com.au.

If you would like to receive email updates about of-of-hours work near your property - or if you have an enquiry or complaint about this work - please contact toll free 1800

When

Sun 3 June to Sun 8 July 2018

Hours of operation

- 9pm to 5am Sun to Mon

Where

Parramatta Road, Ashfield.

For more information

Drop in to the Community Information Centre.

52 Railway Parade, Burwood.

9am to 5pm
Monday to Friday
(excluding public holidays).

We speak your language



Need an interpreter?
Call the Translating and Interpreting Service on 131 450.

Notification No.N360

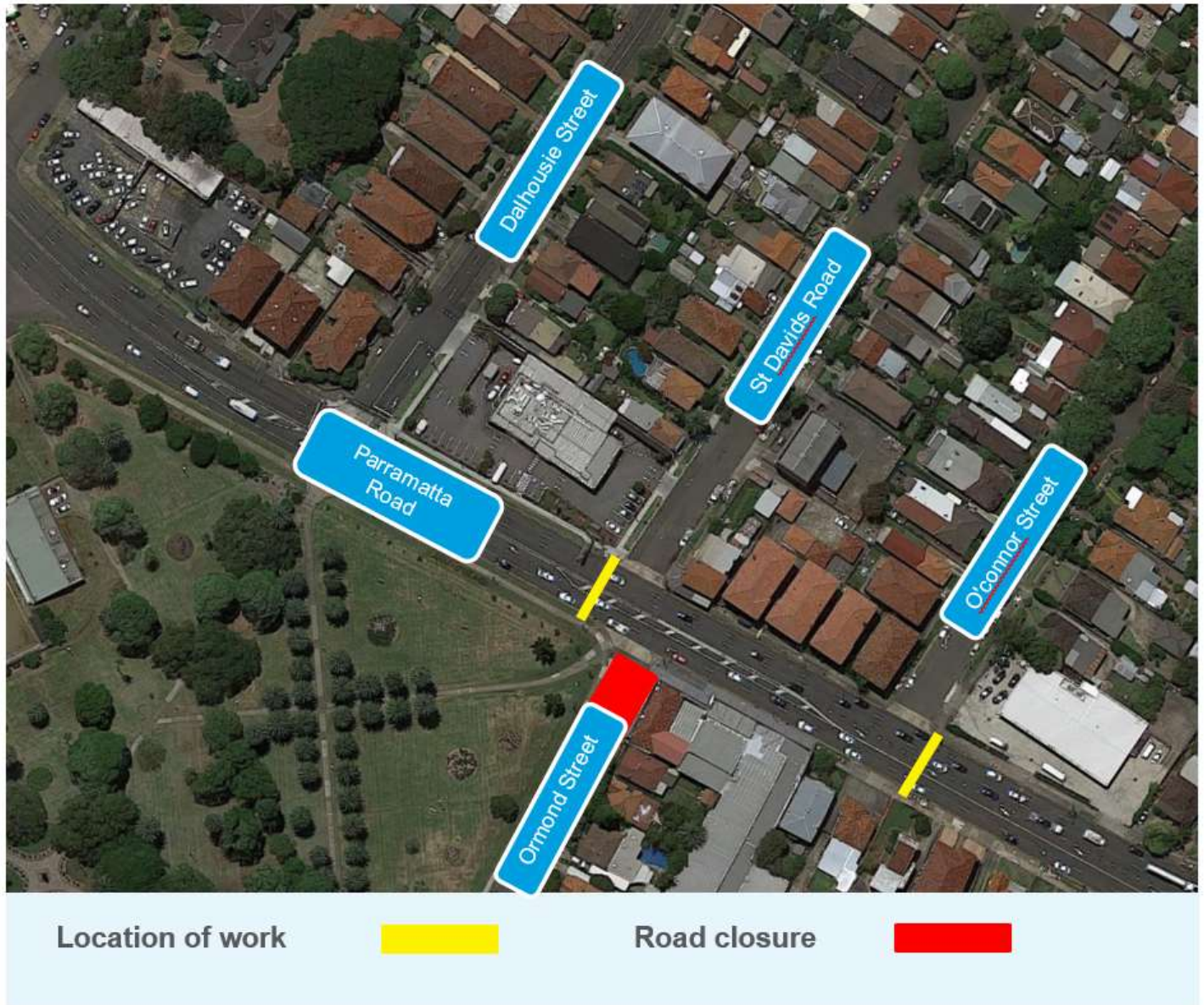


Constructed by



660 248 and ask to speak to a member of the M4 East team or email info@M4East.com.au.

Location of work - Parramatta Road, Ashfield



Map data © 2018 Google