

Temporary road closure – Bland Street, Haberfield

From **Sunday, 14 January 2018**, Bland Street will be temporarily closed at its intersection with Parramatta Road (eastbound) to complete the installation of utility services for the new Parramatta Road eastbound alignment.

The road will be closed between 9.00 pm on Sunday, 14 January 2018 and 5.00 am on Saturday, 20 January 2018. A map showing the road closure is provided overleaf.

Timing and work hours

Where possible, work has been scheduled to take place **between 7.00 am and 6.00 pm Monday to Friday**. Up to four night shifts are required throughout this closure where additional lane closures on Parramatta Road are needed. Should night work be required, it will occur between **9.00 pm and 5.00 am**.

If the work cannot be completed during this period, it will be rescheduled and you will be notified.

Work activities

This will involve:

- road work including installing traffic barriers, signage, line marking as well as reinstating the pavement and road
- installing and modifying utility services, including drainage.

Equipment used during the work will include excavators, vacuum trucks, concrete saws, cranes, trucks, compactors, road line markers, graders, asphalt laying plant, small tools, hand tools and lighting equipment.

Minimising impact

There will be some noise associated with this work and every effort will be made to minimise this by using non-tonal reversing beepers on machinery at night, turning off equipment and vehicles when not in use and where possible, directing noisy equipment away from residences.

Traffic changes

Easterly pedestrian access will be through the old tile shop on the corner of Bland Street and Parramatta Road. Traffic controllers will be in place to assist pedestrians. The bus stop on Parramatta Road eastbound, currently east of Bland Street, will temporarily be relocated to west of Bland Street for the duration of this work.

Traffic control and pedestrian management will be in place to ensure the safety of motorists, residents and workers. Parking may be restricted in the vicinity of the work. If you travel along the route, please allow extra travel time and follow the signage and direction of traffic controllers.

The Traffic and Access Management Plan (TAMP) for this work permits construction vehicles to access the work site via approved local roads. Please refer to the map overleaf for the approved vehicle routes.

If you have an enquiry or complaint about this work, please contact toll free 1800 660 248 and ask to speak to a member of the M4 East team or email info@M4East.com.au

Notification reference: N295

ABOUT WESTCONNEX

WestConnex is part of a broader transport plan for Sydney which includes improved public transport, such as Sydney Metro and light rail, as well as better, more reliable motorway solutions. More than two-thirds of WestConnex will be built underground. Once complete, motorists will be able to avoid up to 52 sets of traffic lights and enjoy significant travel time savings.



Easing congestion

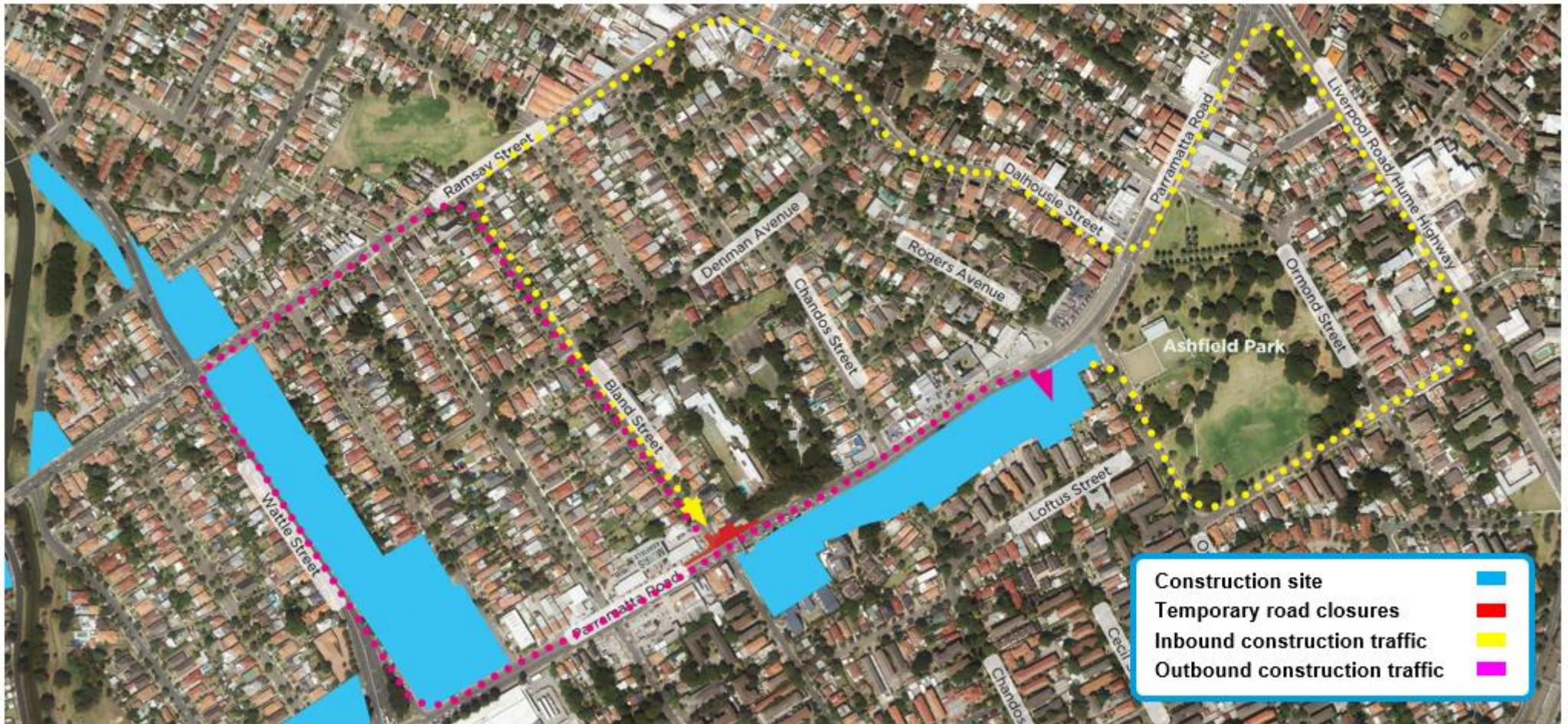


Creating jobs



Connecting communities

Temporary road closure – Bland Street, Haberfield





Easing congestion



Creating jobs



Connecting communities

Temporary road closure – Bland Street, Haberfield



Construction site	
Pedestrian access	
Temporary road closure	
Bus stop closed	
Bus stop open	



We speak your language

To learn more simply visit westconnex.com.au/yourlanguage. Need an interpreter? Call the Translating and Interpreting Service on 131 450