

WestConnex

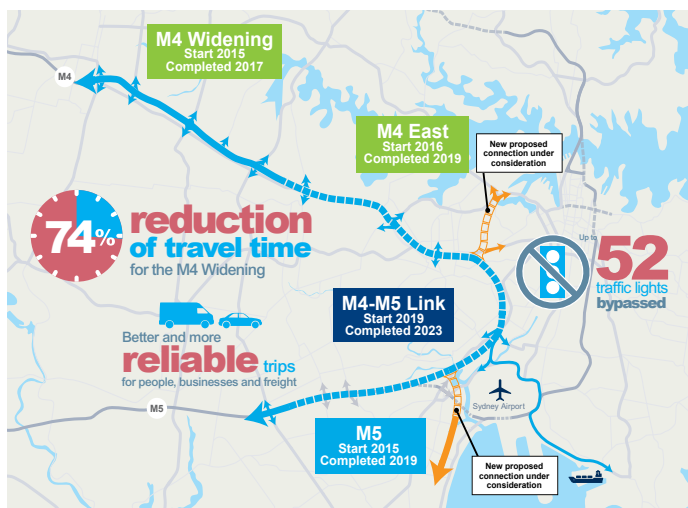
M4 Widening Environmental Impact Statement

Community update | August 2014



WestConnex will save 40 minutes on a typical journey between Parramatta and Sydney Airport, bypassing up to 52 sets of traffic lights and helping the city cope with an expected population increase of 1.5 million over the next 20 years. An environmental impact statement for the M4 Widening is now on display by the NSW Department of Planning and Environment.

All submissions must be received by Friday 12 September 2014.



A project overview is available at www.westconnex.com.au

Opening in 2017, the M4 Motorway will be widened and upgraded between Church Street, Parramatta and Homebush Bay Drive, Homebush.

In addition to WestConnex, the NSW Government is investing \$30 million to ease congestion around Parramatta and improve connectivity to the motorway, with detailed traffic modelling currently underway.

Key

- Upgraded
- New lane
- Road
- Rail line
- Traffic flow



Silverwater Road connections

Silverwater Road bottleneck eased with longer ramps.

New Olympic Park connection eastbound

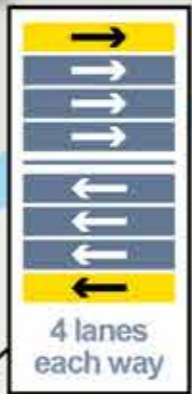
Sports fans and concert goers will be able to avoid traffic jams with direct eastbound access to the M4.

New Homebush Bay Drive connection

Motorists from the north will bypass lights for direct access to the M4 Motorway. North/south congestion will be eased.

James Ruse Drive

Four lanes in each direction to ease congestion. More reliable travel times.



Widening within motorway corridor

New bridge over Duck River

NOT TO SCALE





To view the environmental impact statement or to make a formal submission go to www.majorprojects.planning.nsw.gov.au

Send written submissions with project number SSI 6148 to the Department of Planning and Environment, GPO Box 39, Sydney NSW 2001.

Drop In Sessions

All welcome at any time

Detailed maps, new videos, construction information and specialists will be available to answer your questions at these times:

Parramatta Town Hall

Monday 25 August, 3pm to 6pm

Access via Civic Place behind Parramatta City Council Chambers

Newington Community Centre

Tuesday 26 August, 2.30pm to 5.30pm

Corner of Avenue of Europe and Avenue of Asia, Newington

Granville Town Hall

Wednesday 27 August, 3pm to 6pm

10 Carlton Street, Granville

Strathfield Library

Monday 1 September, 11am to 1pm

65 Rochester Street, Homebush

Auburn Centre for Community

Saturday 6 September, 10am to 1pm

44A Macquarie Road, Auburn

Environmental Impact Statement

On public display until Friday 12 September 2014 at these locations:

NSW Department of Planning and Environment

23-33 Bridge Street, Sydney

Open Monday to Friday, 9am to 5pm

Auburn City Council

1 Susan Street, Auburn

Open Monday to Friday, 8.30am to 4pm

Holroyd City Council

16 Memorial Avenue, Merrylands

Open Monday to Friday, 8am to 4.30pm

Parramatta City Council

30 Darcy Street, Parramatta

Open Monday to Friday, 8.30am to 4.30pm

Strathfield Council

65 Homebush Road, Strathfield

Open Monday to Friday, 9am to 5pm

Roads and Maritime Services

Level 9, 101 Miller Street, North Sydney

Open Monday to Friday, 8.30am to 5pm



WestConnex speaks your language

Learn more by visiting

www.westconnex.com.au/yourlanguage

to watch project videos in your language and read more about WestConnex. If you need an interpreter, call the Translating and Interpreting Service on **131 450**.

Arabic

اعرف المزيد بزيارة الموقع www.westconnex.com.au/yourlanguage وذلك لمشاهدة الفيديوهات الخاصة بالمشروع باللغة العربية وقراءة المزيد عن وست كونكس. إذا كنت في حاجة إلى مترجم، اتصل بخدمة الترجمة الخطية والشفهية على الرقم **.131 450**

Chinese

了解詳情請上網

www.westconnex.com.au/yourlanguage 觀看(普通話)視頻，並查閱有關WestConnex的更多訊息。如需要傳譯員請撥電話傳譯服務 **131 450**

Hindi

इस वेबसाइट पर अधिक जानकारी पाएँ:

www.westconnex.com.au/yourlanguage (हिन्दी) में इस परियोजना के बारे में वीडियो देखें और वेबस्टॉनैक्स के बारे में और अधिक सामग्री पढ़ें यदि आपको दुभाषिया चाहिए तो अनुवाद व दुभाषिया सेवा को **131 450** पर फोन करें।

Greek

Μάθετε περισσότερα επισκεπτόμενοι το www.westconnex.com.au/yourlanguage για να δείτε τα βίντεο του έργου στα ελληνικά και να διαβάσετε περισσότερα για το WestConnex. Εάν χρειάζεστε διερμηνέα, καλέστε την Υπηρεσία Μετάφρασης και Διερμηνείας στο **131 450**.

Italian

Per saperne di più visiti il sito www.westconnex.com.au/yourlanguage, dove potrai guardare i video del progetto in lingua italiana e trovare maggiori informazioni su WestConnex. Se ha bisogno di un interprete, contatti il Servizio di Traduzione ed Interpretariato (Translating and Interpreting Service) al numero **131 450**.

Korean

www.westconnex.com.au/yourlanguage 를 방문하여 한국어로 된 프로젝트 비디오를 보고 WestConnex 에 관해 읽고 배우세요. 통역이 필요하시면 번역 및 통역 서비스 **131 450** (TIS) 으로 전화하십시오.

Vietnamese

Hãy tìm hiểu thêm và viếng trang mạng www.westconnex.com.au/yourlanguage để xem phim ảnh bằng Việt ngữ về công trình này và đọc thêm về WestConnex. Nếu quý vị cần thông ngôn viên, xin vui lòng gọi Dịch Vụ Thông Ngôn Phiên Dịch số **131 450**.