

## Construction work – Haberfield

Further to our notification (N165), from **Wednesday, 1 March 2017** construction work and utilities investigation and installation will continue along Wattle Street, Ramsay Street, and Parramatta Road, Haberfield. A map showing the location of the work is provided overleaf.

To minimise the impact to residents, work has been scheduled to take place between **7.00 am and 6.00 pm Monday to Friday** and **8.00 am and 1.00 pm on Saturday**, where possible. However, to ensure the safety of workers and motorists, some night work is required. Night work will take place between **9.00 pm and 5.00 am Sunday to Friday**. In some instances, preparatory work may commence at 6.00 pm, residents will be notified separately when work is scheduled to commence at 6.00 pm.

This work will take approximately **three months to complete** and will involve:

- installing storm water drainage
- installing traffic barriers, signage and line marking
- clearing and removing vegetation
- utility work including investigation, installing and modifying services
- installing and modifying pavements including associated drainage work
- installing and maintaining concrete slabs
- temporary remediation work, prior to permanent restoration completed in collaboration with Inner West Council.

Equipment used during the work will include excavators, vacuum trucks, concrete saws, core drills, chainsaws, cranes, trucks, compactors, road line markers, graders, asphalt laying plant, small tools, hand tools and lighting equipment.

Traffic control and pedestrian management will be in place to ensure the safety of motorists, residents and workers. Access to properties will be maintained. If you travel along the work route, please allow extra travel time and follow the signage and direction of traffic controllers.

There will be some noise associated with this work, however every effort will be made to minimise the impact of work, including using non-tonal reversing beepers on all machinery at night, turning off equipment and vehicles when not in use and, where possible, directing noisy equipment away from residences. All sites will also be restored to their previous condition.

If you have a complaint or enquiry about this work, please contact toll free 1800 660 248 and ask to speak to a member of the M4 East team or email [info@M4East.com.au](mailto:info@M4East.com.au).

Notification reference: N179

### ABOUT WESTCONNEX

WestConnex is part of a broader transport plan for Sydney which includes improved public transport, such as Sydney Metro and light rail, as well as better, more reliable motorway solutions. More than two-thirds of WestConnex will be built underground. Once complete, motorists will be able to avoid up to 52 sets of traffic lights and enjoy significant travel time savings.

#### For more information

✉ [info@M4East.com.au](mailto:info@M4East.com.au)  
☎ 1800 660 248  
🌐 [westconnex.com.au](http://westconnex.com.au)  
📱 [f](#) [t](#) [in](#)

#### Drop in to the Community Information Centre

Open 9:00am to 5:00pm Monday to Friday  
(excluding public holidays)  
52 Railway Parade, Burwood NSW 2134

#### Constructed by





Easing congestion

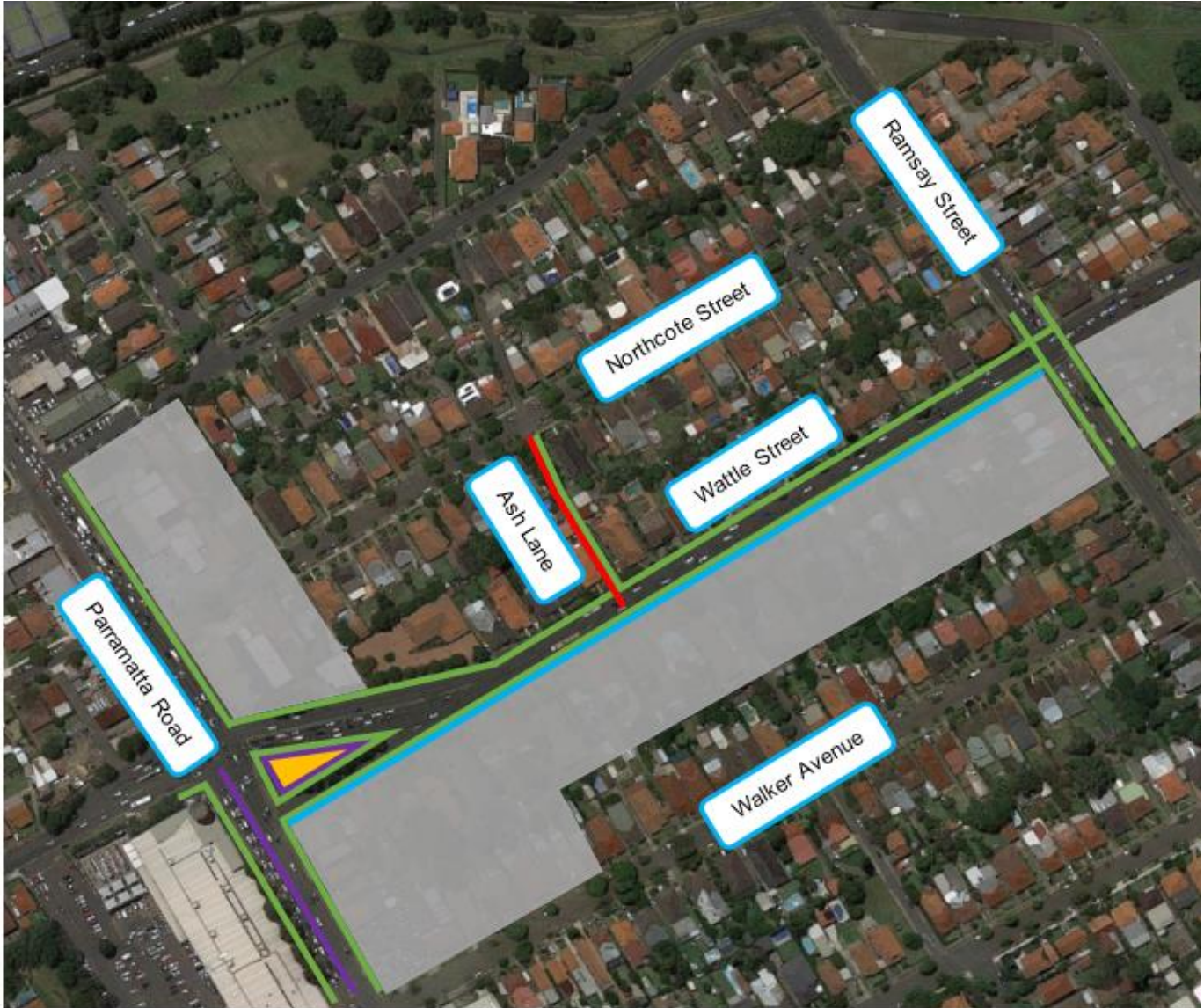


Creating jobs




Connecting communities

Locations of ongoing work – Haberfield.



Map data © 2016 Google

- Stormwater drainage ■
- Barrier and sign installation and line marking ■
- Vegetation clearing ■
- Utilities investigation and installation (Water and sewer) ■
- Pavement work ■
- Construction site ■

 **We speak your language**  
To learn more simply visit [westconnex.com.au/yourlanguage](http://westconnex.com.au/yourlanguage). Need an interpreter? Call the Translating and Interpreting Service on 131 450