

## M4 East maintenance works - Homebush

During the construction of the M4 East project, the project joint venture consisting of CPB Contractors Samsung John Holland (CSJ) will be responsible for maintenance work on roads in the vicinity of construction sites. A map showing the area required to be maintained is shown overleaf. This maintenance is required to ensure public safety, functional performance and aesthetic qualities.

Maintenance works include, but are not limited to:

- potholes and drainage
- vegetation control (grass trimming and tree pruning)
- roadside litter
- graffiti and poster removal
- incident operations
- road marking, signage, safety barriers, kerb and gutter

CSJ has a responsibility to undertake rectification works within dedicated time periods, which could range from 1 hour to 60 days.

### Hours of work

This work will be undertaken as required until the completion of the project in early 2019. Where possible, work will be undertaken during standard construction hours of **7.00 am to 6.00 pm, Monday to Friday and 8.00 am to 1.00 pm on Saturdays. However, to reduce impacts on road users and ensure the safety of workers and motorists, work outside of these hours will be required.**

If maintenance is required outside of standard construction hours, we will aim to schedule these works during planned night work to minimise impacts. If this is not possible, where we can, we will provide notice to impacted residents.

### Equipment list

To carry out this work the following equipment may be used: excavators, bobcats, road/concrete saws, jackhammers, asphalt pavers, compactors, vacuum excavation trucks, elevated platforms, chainsaws, whipper-snipper, light vehicles and trucks, concrete trucks, lighting towers and hand tools.

There will be some noise associated with this work, however every effort will be made to minimise the impact of work, including by using low-tonal reversing beepers on machinery during night works, turning off equipment and vehicles when not in use, directing noisy equipment away from residences where possible, and undertaking regular noise monitoring to ensure levels are being managed effectively.

Traffic control, detour signage and pedestrian management will be in place during the work to ensure the safety of motorists, residents and workers. Please follow the signage and the direction of traffic controllers.

If you have an enquiry or complaint about this work, please contact toll free 1800 660 248 and ask to speak to a member of the M4 East team or email [info@M4East.com.au](mailto:info@M4East.com.au).

Notification reference: N189

### ABOUT WESTCONNEX

WestConnex is part of a broader transport plan for Sydney which includes improved public transport, such as Sydney Metro and light rail, as well as better, more reliable motorway solutions. More than two-thirds of WestConnex will be built underground. Once complete, motorists will be able to avoid up to 52 sets of traffic lights and enjoy significant travel time savings.

#### For more information

✉ [info@M4East.com.au](mailto:info@M4East.com.au)  
☎ 1800 660 248  
🌐 [westconnex.com.au](http://westconnex.com.au)  
📱 [f](#) [t](#) [in](#)

#### Drop in to the Community Information Centre

Open 9:00am to 5:00pm Monday to Friday  
(excluding public holidays)  
52 Railway Parade, Burwood NSW 2134

#### Constructed by





Easing congestion

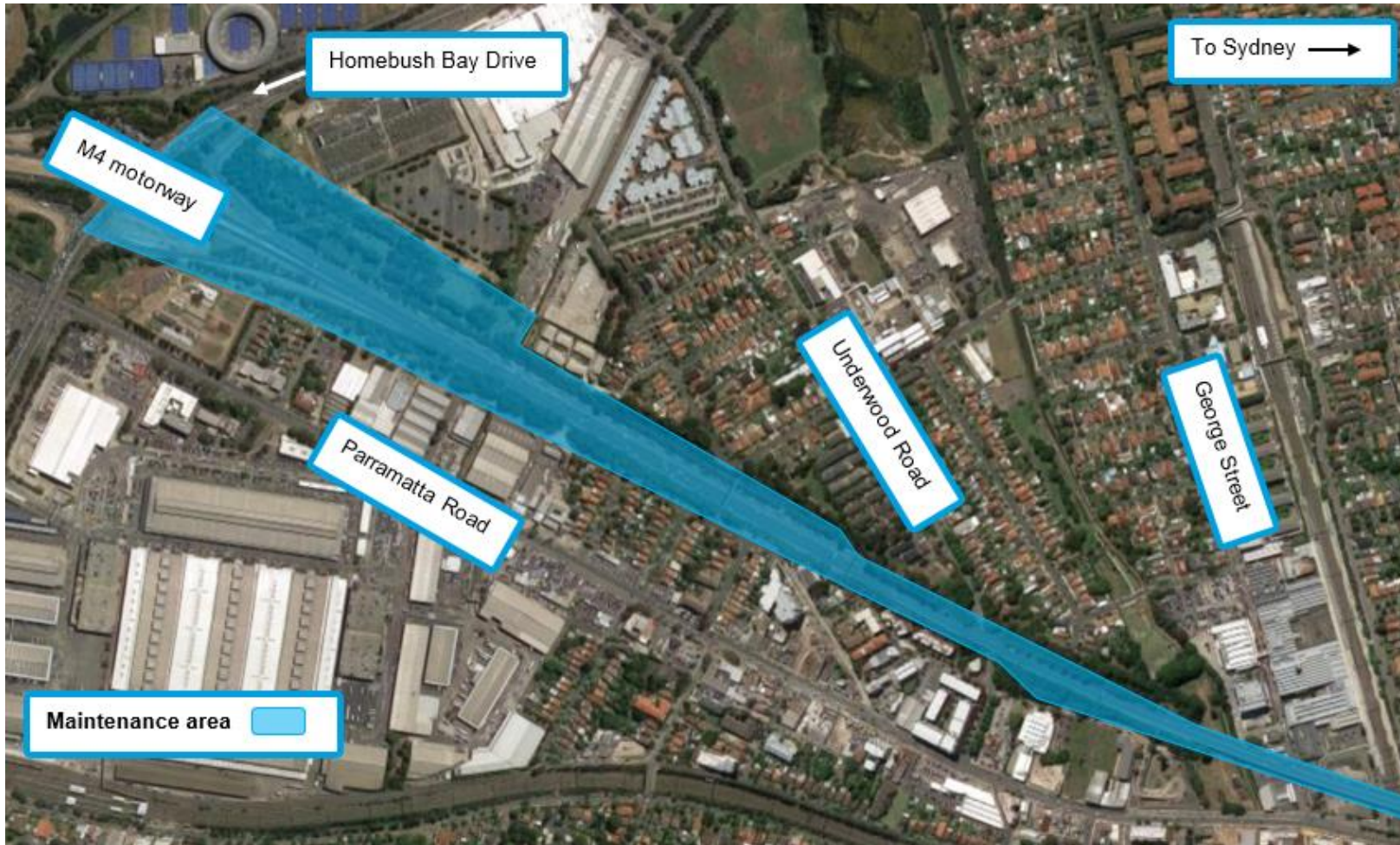



Creating jobs



Connecting communities

### M4 East maintenance works - Homebush



 **We speak your language**  
 To learn more simply visit [westconnex.com.au/yourlanguage](http://westconnex.com.au/yourlanguage). Need an interpreter? Call the Translating and Interpreting Service on 131 450