



Construction work - M4 Motorway, North Strathfield

Further to notification (N272l and N379e), from Tuesday, 26 February 2019, work will continue on the M4 Motorway between Parramatta Road and Sydney Street, North Strathfield. A map showing the location of the work is provided overleaf.

This work is required to construct the bridge which will allow access from Concord Road to the New M4 westbound tunnel, Franklyn Street noise wall and to install the associated Intelligent Transport System (ITS) infrastructure.

You will be updated monthly on the progress of this work.

What we're doing

The work will involve:

- concrete work including formwork, piling and stich pours
- backfilling retaining walls
- installing concrete barriers, twin rails and concrete panels
- steel girder painting
- vegetation trimming, clearing and landscaping
- mobilising and demobilising mobile cranes
- pavement restoration
- asphalt paving
- bridge works
- Painting
- Installing permanent noise wall
- Loading, hauling and compacting of material
- Moving barriers

Equipment used will include a sweeper, delivery trailer, light vehicles, smooth drum roller, bob cat, telehandler, bogie truck, mobile crane, franna crane, concrete boom pumps, slip form paver, excavator, Elevated Work Platform (EWP), vibrating plate compactors, hammer drills, concrete trucks, piling rig, hand tools, lighting equipment; milling/asphalt equipment; landscaping rockslinger equipment and concrete vibration equipment.

When

Tues 26 February to Tues 26 March 2019

Hours of operation

- 7am to 6pm Mon to Fri
- 8am to 1pm on Sat
- 8pm to 5am Mon to Sun

Where

M4 Motorway, North Strathfield and Concord Road, Concord

For more information

Drop in to the Community Information Centre

52 Railway Parade,
Burwood NSW 2134

- 9am to 5pm
Monday to Friday
(excluding public holidays)

We speak
your language



Visit westconnex.com.au.

Need an interpreter?

Call the Translating and
Interpreting Service on

131 450.

Notification No. N272m



Australian Government

BUILDING OUR FUTURE



Constructed by



How this affects you

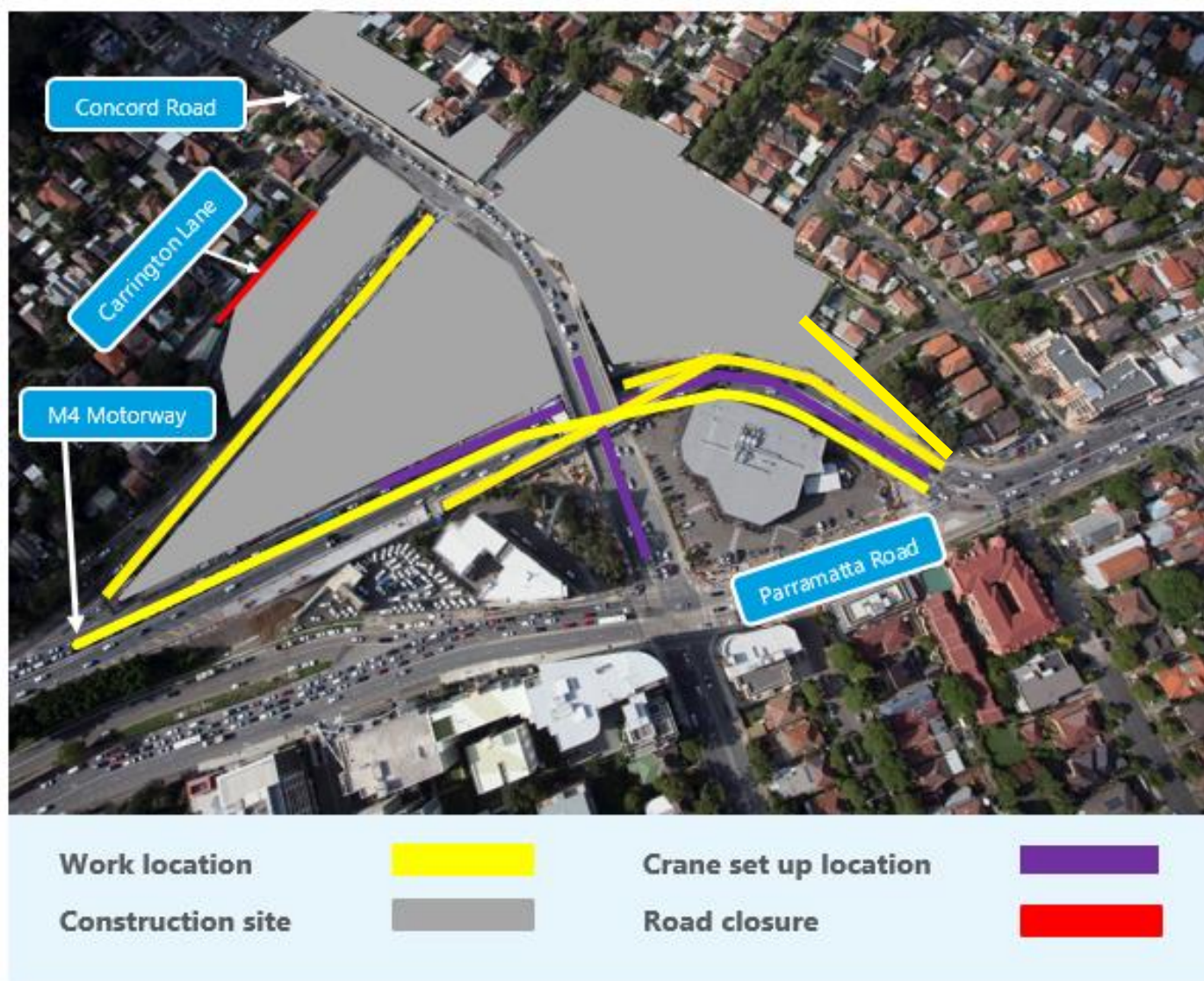
There will be overnight closures of some roads to facilitate this work. The M4 Motorway will be closed **westbound** between Parramatta Road and the Powells Creek on-ramp and **eastbound** between the Sydney Street off-ramp and Parramatta Road. There will also be closures on Concord Road from Parramatta Road to Sydney Street. If you travel along the work route, please allow extra travel time and follow the signage and direction of traffic controllers. Please visit livetraffic.com for closure dates and times.

There will be some noise associated with this work and every effort will be made to minimise this including turning off equipment and vehicles when not in use and directing noisy equipment away from residences where possible.

If you have an enquiry or complaint about this work, please contact toll free 1800 660 248 and ask to speak to a member of the M4 East team or email info@M4East.com.au.

Location of construction work – M4 Motorway, North Strathfield

Please note that construction will not take place in all work locations at the same time.



Map data © 2018 Google