



Construction update - Concord Road, Parramatta Road, M4 Motorway

From Saturday 4 May 2019, final works will continue along Parramatta Road, M4 Motorway and to facilitate the widening of Concord Road. Residents will be updated monthly about the progress of the work. A map showing the location of the work is provided overleaf.

What we're doing

The work will involve:

- Finalising service investigation and installation (including drainage)
- Installing traffic barriers and signage
- Defect works on fencing, footpaths, pavements, gutters and guard rails
- Modifying and installing tolling gantries, traffic signals and street lighting
- Commissioning and Testing intelligent transport system infrastructure (including CCTV, signage, lanterns, and sensors, moveable medians and feature lighting in the tunnel entry)
- Vegetation trimming, clearing and landscaping
- Mobilising and demobilising mobile cranes
- Road work including asphaltting, line marking, installing median strips and guard rails

Equipment used will include sweeper, delivery trailer, light vehicles, smooth drum roller, bob cat, telehandler, vibrating plate compactors, hammer drills, piling rig, milling/asphalt equipment, landscaping rockslinger, concrete vibration equipment, excavators, piling rig, vacuum trucks, concrete saws, core drills, rollers, cranes, concrete trucks and pumps, concrete saws, chainsaws, cranes, trucks, compactors, site vehicles, EWPS, small tools, hand tools and lighting equipment.

How this affects you

Pedestrian detours are in place along Sydney Street (between Thornleigh Avenue and Concord Road) and Concord Road (southbound between Patterson Street and the M4 Motorway) and (northbound between Patterson Street and Parramatta Road). Traffic control and pedestrian management will be in place to ensure the safety of motorists, residents and workers. Access to driveways will be maintained. If you travel along the work route, please allow extra travel time and follow the signage and direction of traffic controllers.

When

Saturday 4 May - Friday 31 May

Hours of operation

- 7am - 6pm Mon to Fri
- 8am - 1pm Sat
- 8pm - 5am Mon to Sun

Where

Parramatta Road and Concord Road, North Strathfield

For more information

Drop in to the Community Information Centre
52 Railway Parade, Burwood
9am to 5pm
Monday to Friday
(excluding public holidays)

We speak your language



Need an interpreter?
Call the Translating and Interpreting Service on
131 450.

Notification No.328n



Australian Government

BUILDING OUR FUTURE



NSW
GOVERNMENT

Transurban

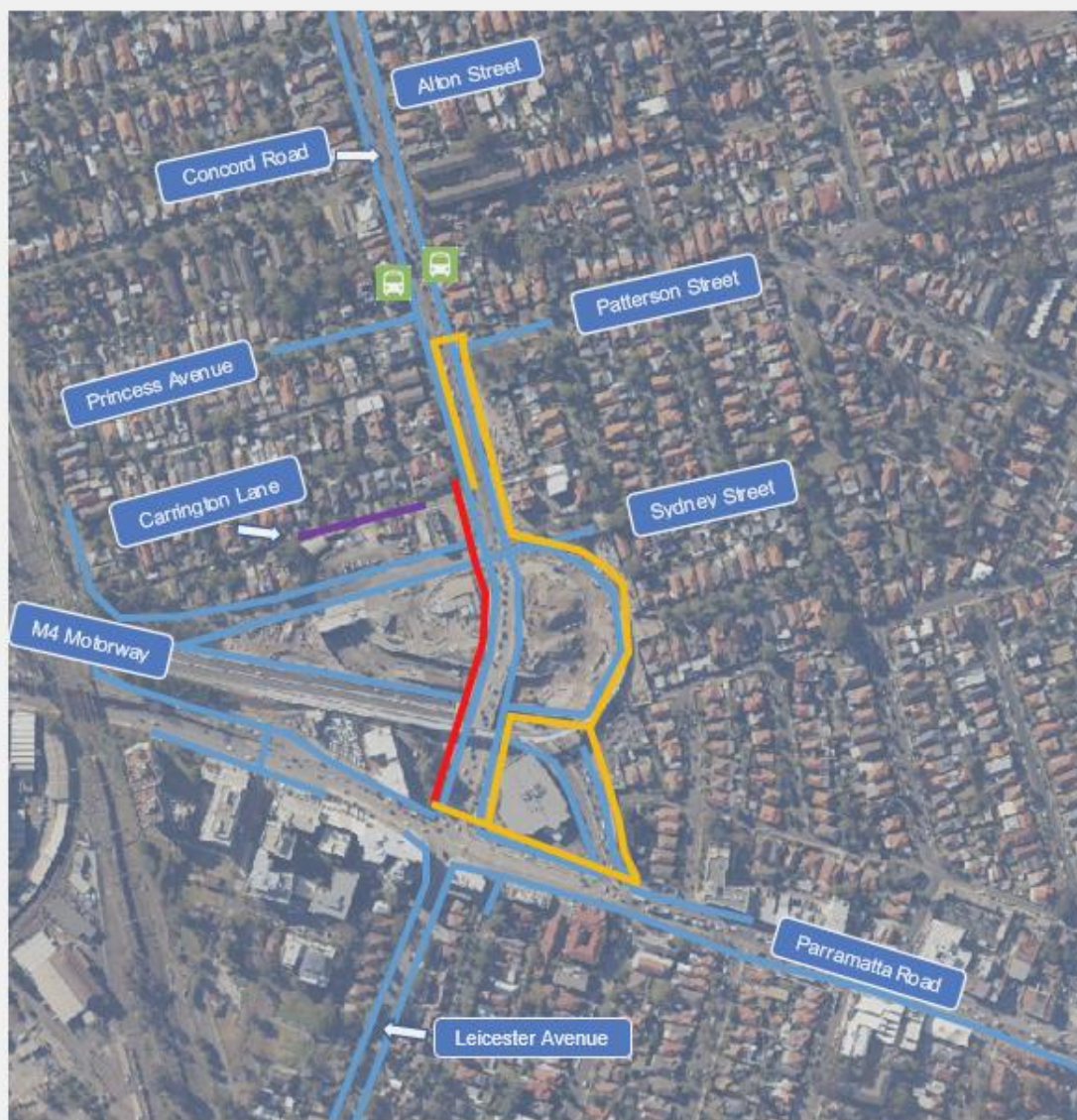
Constructed by



If you travel along the work route, please allow extra travel time and follow the signage and direction of traffic controllers. There will be some noise associated with this work and every effort will be made to minimise this impact including by turning off equipment and vehicles when not in use and directing noisy equipment away from residences where possible.

If you have an enquiry or complaint about this work, please contact toll free 1800 660 248 and ask to speak to a member of the M4 East team or email info@M4East.com.au.

Location of works



Footpath closure
Pedestrian detour
Open bus stop



Street closed (local access only)
Work location

