



## Construction Update - Parramatta Road Interchange

From Sunday, 7 April 2019 work continues around the Parramatta Road Civil Site in anticipation of project completion within the coming months. A map showing the location of work is provided overleaf.

Updates will be provided to residents monthly.

### What we're doing

Remaining activities will involve:

- road work including removing temporary traffic barriers and signage, and line marking;
- residual footpath restoration and concrete works;
- landscaping and installing environmental controls.

Equipment used will include vacuum trucks, line marking equipment, drum rollers, excavators, compactor plates, trucks, concrete saws, concrete trucks, concrete pumps, hand tools and lighting equipment.

### How this affects you

Traffic control and pedestrian management will be in place to ensure the safety of motorists, residents and workers. If you travel along the route, please allow extra travel time and follow the signage and direction of traffic controllers.

There will be some noise associated with this work and every effort will be made to minimise this including turning off equipment and vehicles when not in use and where possible, directing noisy equipment away from residences. If you have an enquiry or complaint about this work, or if you would like to receive updates on out of hours work near your property, please contact toll free 1800 660 248 or email [info@M4East.com.au](mailto:info@M4East.com.au)

### When

7 April - 7 May 2019

### Hours of operation

- 7am to 6pm Mon to Fri
- 8am to 1pm Sat
- 6pm to 5am Mon to Sun

### Where

Parramatta Road, Haberfield and Ashfield.

### For more information

Drop in to the Community Information Centre

52 Railway Parade, Burwood

9am to 5pm

Monday to Friday

(excluding public holidays)

### We speak your language



Need an interpreter?  
Call the Translating and Interpreting Service on  
**131 450.**

Notification No.390e



Australian Government

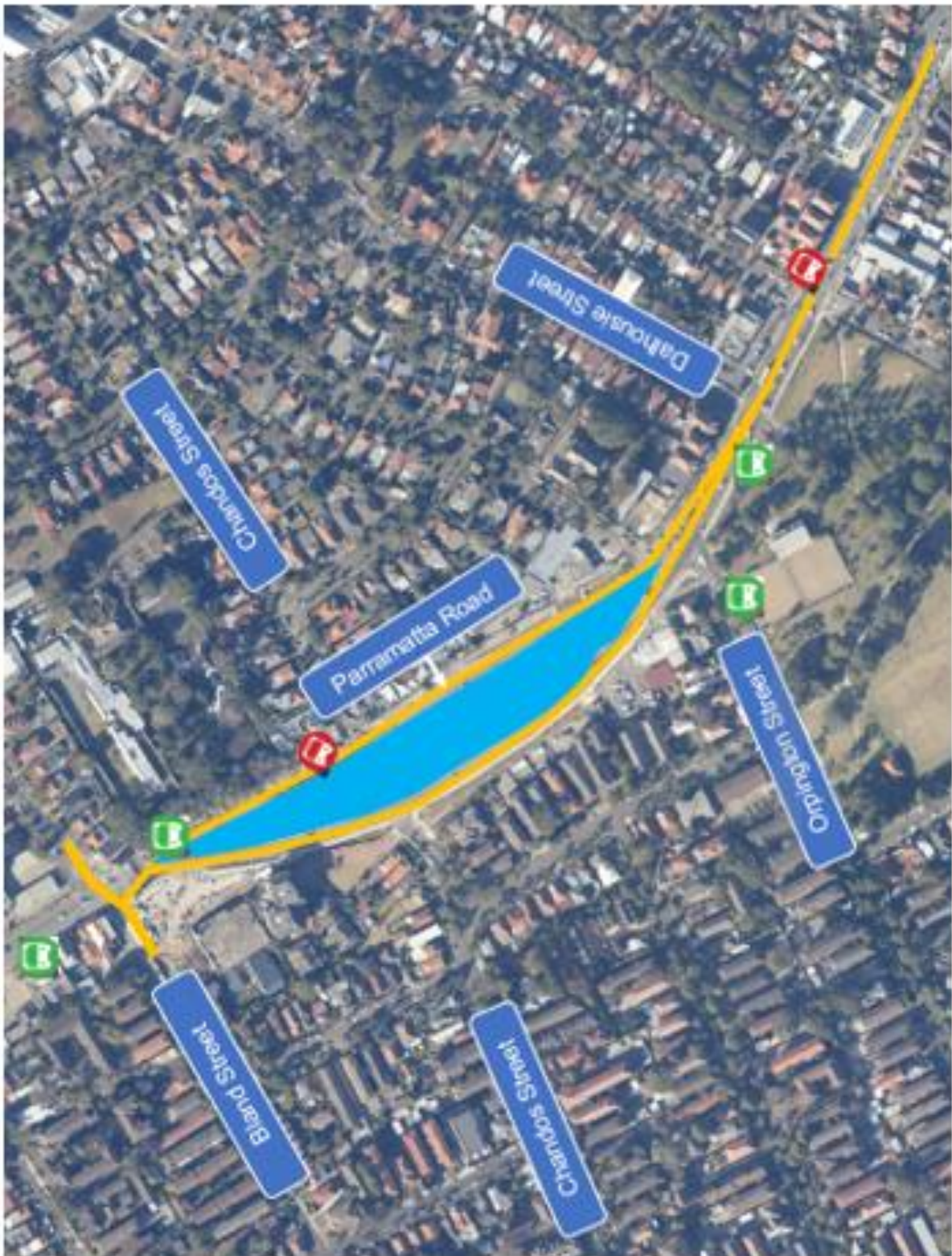
**BUILDING OUR FUTURE**



Constructed by



## Work area - Parramatta Road Civil Site



**Work Site**

**Work location**

Open bus stop

Closed bus stop